



# **Government of New Brunswick Workforce Profile**

as of December 31, 2004

**Rose-May Poirier**  
Minister  
Office of Human Resources



**Office of Human Resources**

CNB 3075

Printed in New Brunswick

ISBN 1-55396-594-9

ISSN 1712-994X

# Government of New Brunswick Workforce Profile

## About this report

This workforce profile provides information about human resources in the New Brunswick public service, which includes employees working in 20 departments, 14 school districts and 8 regional health authorities. Crown corporations are not included in the profile.

This profile presents statistical information on key characteristics of the GNB workforce with information derived from the respective human resource/ payroll systems in Parts I, II and III.

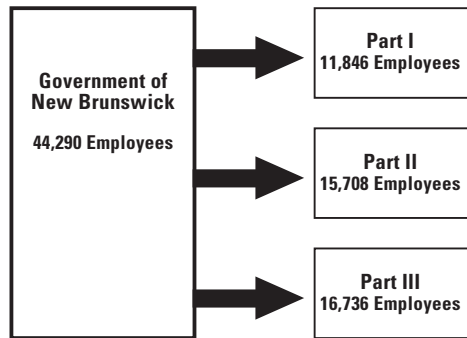
## Structure of the GNB Public Service

Provincial government employees work in three parts of the public service. Part I includes the departments, which are often referred to as the Civil Service. Part II is comprised of the school system including teachers, bus drivers and school district employees. Part III encompasses the hospital system employees including nurses and other hospital employees.

## Number of Employees as of December 31 in Parts I, II and III

There were 44,290 paid employees in Parts I, II and III of the New Brunswick Public Service as of December 31, 2004. Part I had 11,846 representing 27 per cent of the workforce, Part II had 15,708, which was 35 per cent and Part III had 16,736 that accounted for 38 per cent.

The chart shows the number of public service employees as of December 31, 2004 for Parts I, II and III.

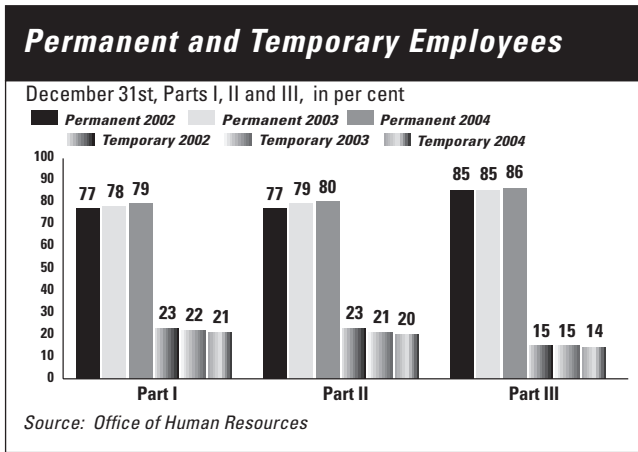


	December 31, 2002	December 31, 2003	December 31, 2004
Part I	12,102	12,148	11,846
Part II	16,105	15,922	15,708
Part III	16,138	16,541	16,736
Total	44,345	44,611	44,290

## Permanent and Temporary Employees as of December 31 in Parts I, II and III

Permanent employees made up 82 per cent of the public service workforce while 18 per cent were temporary employees as of December 31, 2004.

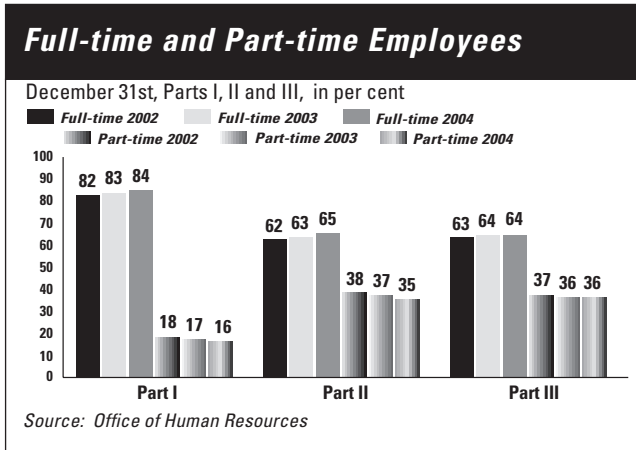
Permanent employees include those with no predetermined end date for their employment. Temporary employees include casuals, term and personal service contracts.



Employment	Part	December 31, 2002	December 31, 2003	December 31, 2004
Permanent	Part I	77%	78%	79%
	Part II	77%	79%	80%
	Part III	85%	85%	86%
Temporary	Part I	23%	22%	21%
	Part II	23%	21%	20%
	Part III	15%	15%	14%

## Full-time and Part-time Employees as of December 31 in Parts I, II and III

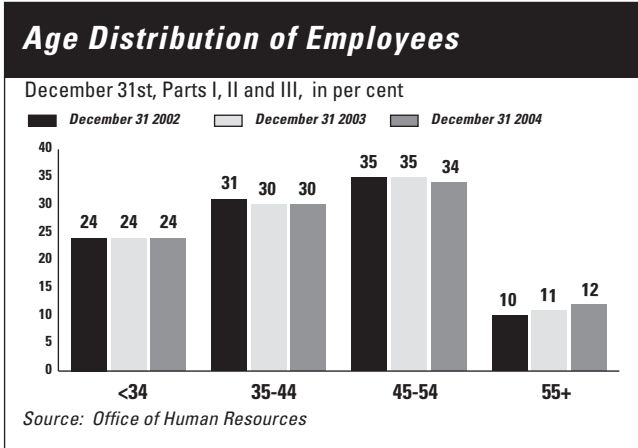
70 per cent of the public service worked full-time and 30 per cent worked part-time as of December 31, 2004.



Employment Type	Part	December 31, 2002	December 31, 2003	December 31, 2004
Full-time	Part I	82%	83%	84%
	Part II	62%	63%	65%
	Part III	63%	64%	64%
Part-time	Part I	18%	17%	16%
	Part II	38%	37%	35%
	Part III	37%	36%	36%

### Age Distribution of Employees as of December 31 in Parts I, II and III

24 per cent of the employees were 34 and under, 30 per cent were between the ages of 35 and 44, 34 per cent were between the ages of 45 and 54 and 12 per cent were over the age of 55 as of December 31, 2004.



Age	December 31, 2002	December 31, 2003	December 31, 2004
<34	24%	24%	24%
35 - 44	31%	30%	30%
45 - 54	35%	35%	34%
55 +	10%	11%	12%