

Sherwood Lake / Lac Sherwood

Kings County / Comté de Kings

*Southwest Recreational Fishing Area /
Zone de Pêche Récréative de Sud-Ouest*

45°18'10.6"N 66°23'46.2"W

Sherwood Lake / Lac Sherwood

Note: *The following maps are not designed for navigation purposes. Please exercise caution when using these maps as some shoals may not appear.*

Remarque: *Les cartes suivantes ne sont pas conçues à des fins de navigation. Faites preuve de prudence lors de l'utilisation de ces cartes, car certains hauts-fonds peuvent ne pas apparaître.*

<u>Lake Characteristics</u>	<u>Caractéristiques du lac</u>
Surface Area : 226.3 hectares / 559.2 acres Maximum Depth : 17.4 metres / 57 feet	Superficie : 226.3 hectares / 559.2 acres Profondeur maximale : 17.4 mètres / 57 pieds

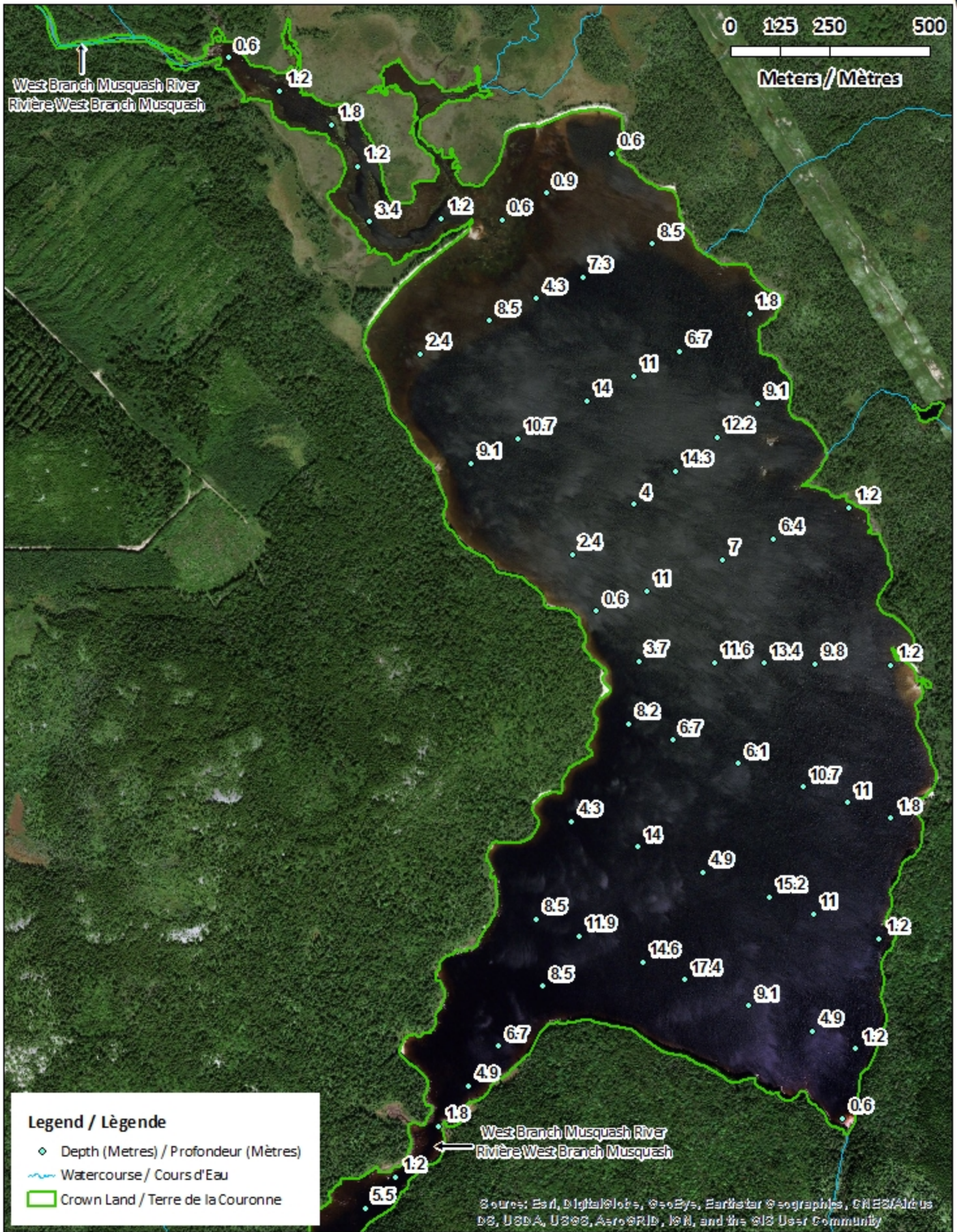
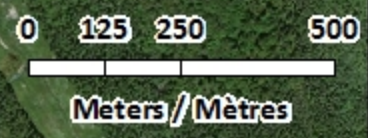
<u>Species Present</u>	<u>Espèce Présente</u>
Sport Fish Landlocked Salmon	Poisson sportif Ouananiche
Non-Sport Fish American Eel Common Shiner Creek Chub Fallfish Lake Whitefish White Sucker	Poisson non sportif Anguille d'Amérique Méné à nageoires rouges Mulet à cornes Ouitouche Grand corégone Meunier noir

This lake is not part of the fish stocking program.

Ce lac ne fait pas partie du programme d'empoissonnement.

Sherwood Lake / Lac Sherwood

Depth Readings (Metres) / Indications de Profondeur (Mètres)



Legend / Légende

- ◆ Depth (Metres) / Profondeur (Mètres)
- ~ Watercourse / Cours d'Eau
- Crown Land / Terre de la Couronne

Sources: Esri, DigitalGlobe, GeoEye, Earthstar Geographics, CNES/Airbus DS, USDA, USGS, AeroGRID, IGN, and the GIS User Community

Sherwood Lake / Lac Sherwood

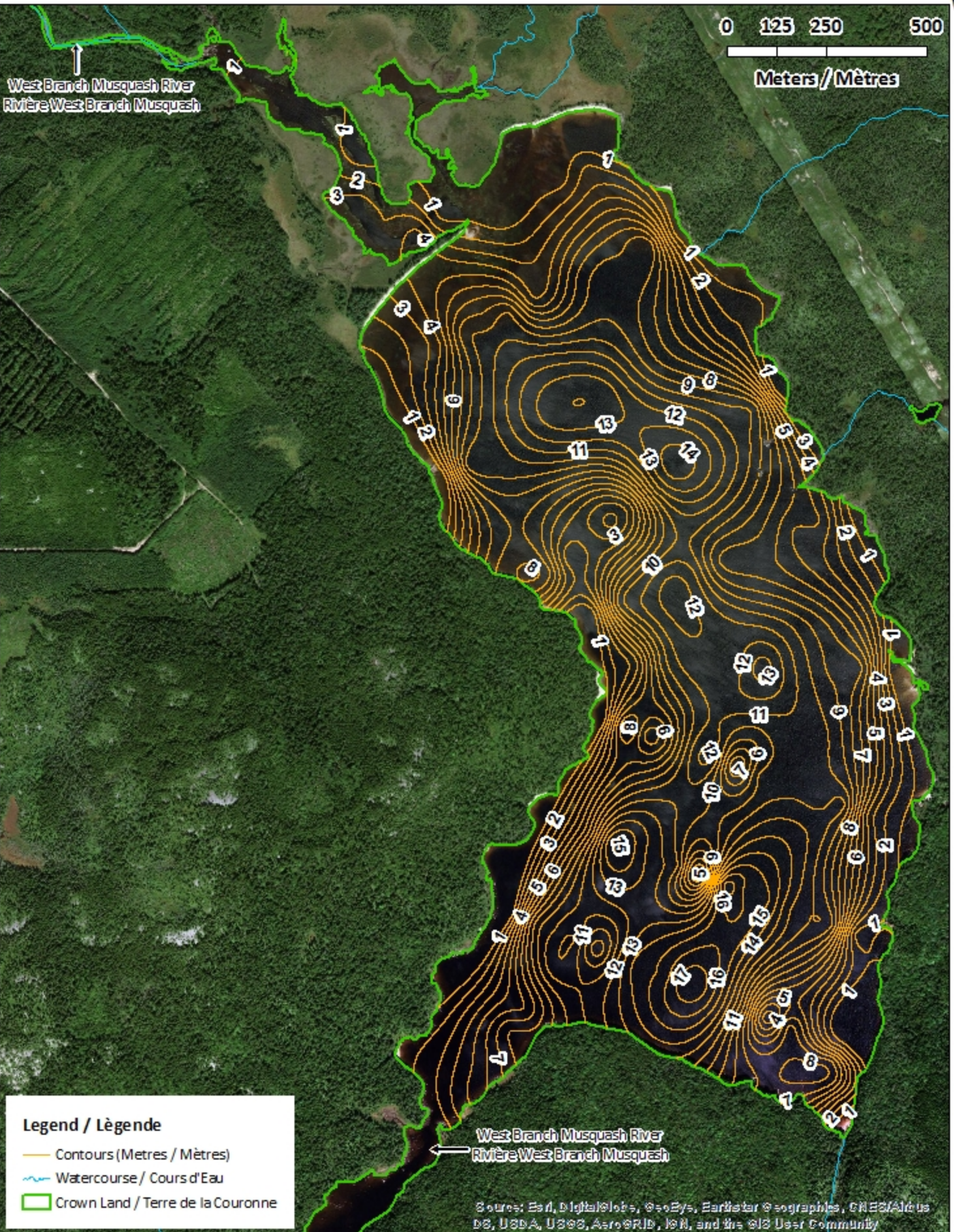
Contours (Metres / Mètres)



0 125 250 500

Meters / Mètres

West Branch Musquash River
Rivière West Branch Musquash



Legend / Légende

— Contours (Metres / Mètres)

~ Watercourse / Cours d'Eau

□ Crown Land / Terre de la Couronne

West Branch Musquash River
Rivière West Branch Musquash

Source: Esri, DigitalGlobe, GeoEye, Earthstar Geographics, CNES/Airbus DS, USDA, USGS, AeroGRID, IGN, and the GIS User Community

Sherwood Lake / Lac Sherwood

Depth (Metres) / Profondeur (Mètres)




0 125 250 500


Meters / Mètres

West Branch Musquash River
Rivière West Branch Musquash

West Branch Musquash River
Rivière West Branch Musquash


Legend / Légende

 Watercourse / Cours d'Eau


 Crown Land / Terre de la Couronne

Lake Depths (Metres)

Profondeur de Lac (Mètres)


 -2.07 - 0


 -4.02 - -2.07


 -5.89 - -4.02


 -7.67 - -5.89

 -9.45 - -7.67

 -11.05 - -9.45

 -12.65 - -11.05

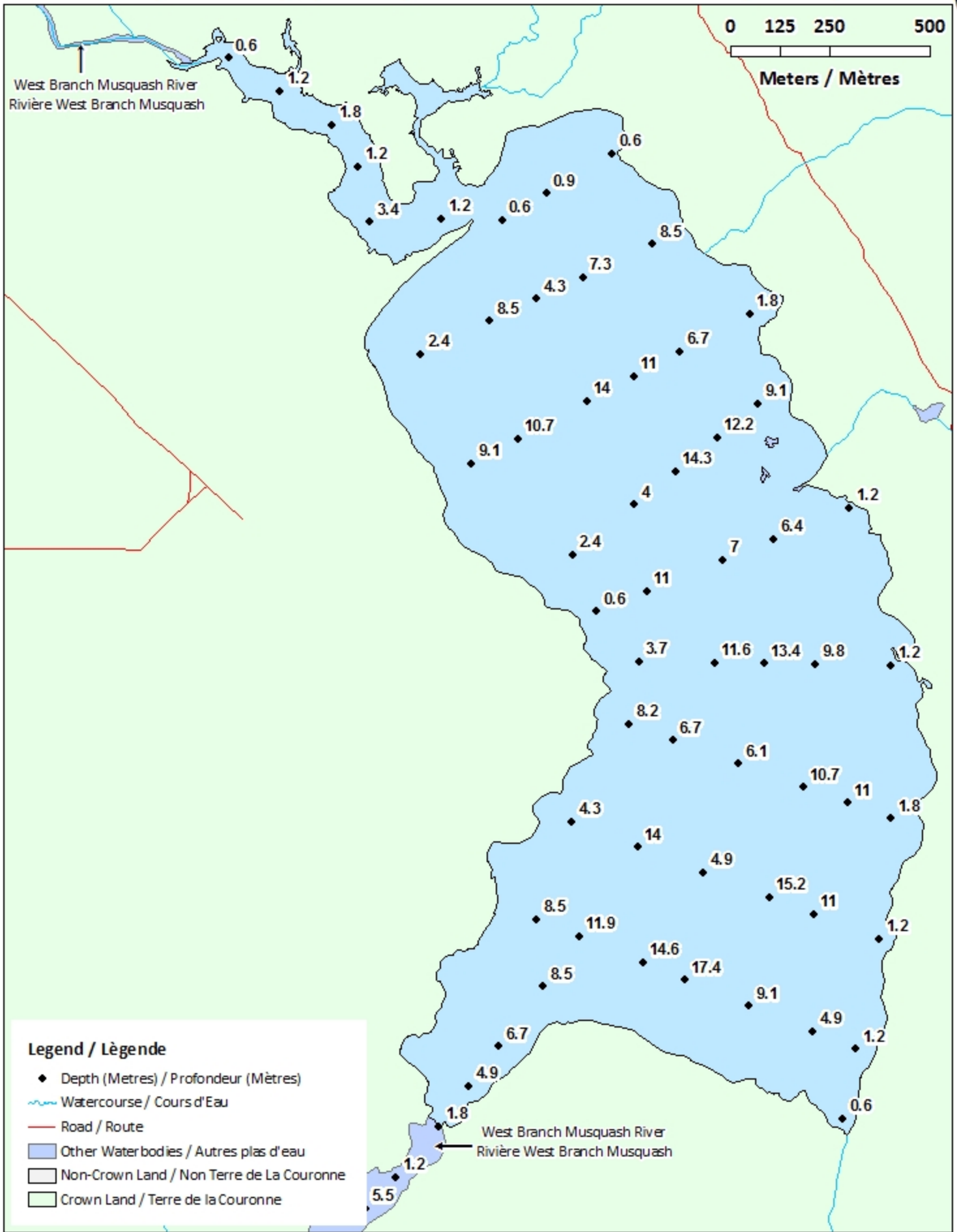
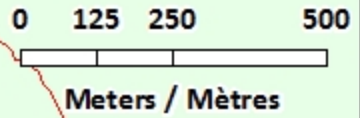
 -14.69 - -12.65

 -17.40 - -14.69

Source: Esri, DigitalGlobe, GeoEye, Earthstar Geographics, CNES/Airbus DS, USDA, USGS, AeroGRID, IGN, and the GIS User Community

Sherwood Lake / Lac Sherwood

Depth Readings (Metres) / Indications de Profondeur (Mètres)



- Legend / Légende**
- ◆ Depth (Metres) / Profondeur (Mètres)
 - ~ Watercourse / Cours d'Eau
 - Road / Route
 - Other Waterbodies / Autres plans d'eau
 - Non-Crown Land / Non Terre de La Couronne
 - Crown Land / Terre de la Couronne

Sherwood Lake / Lac Sherwood

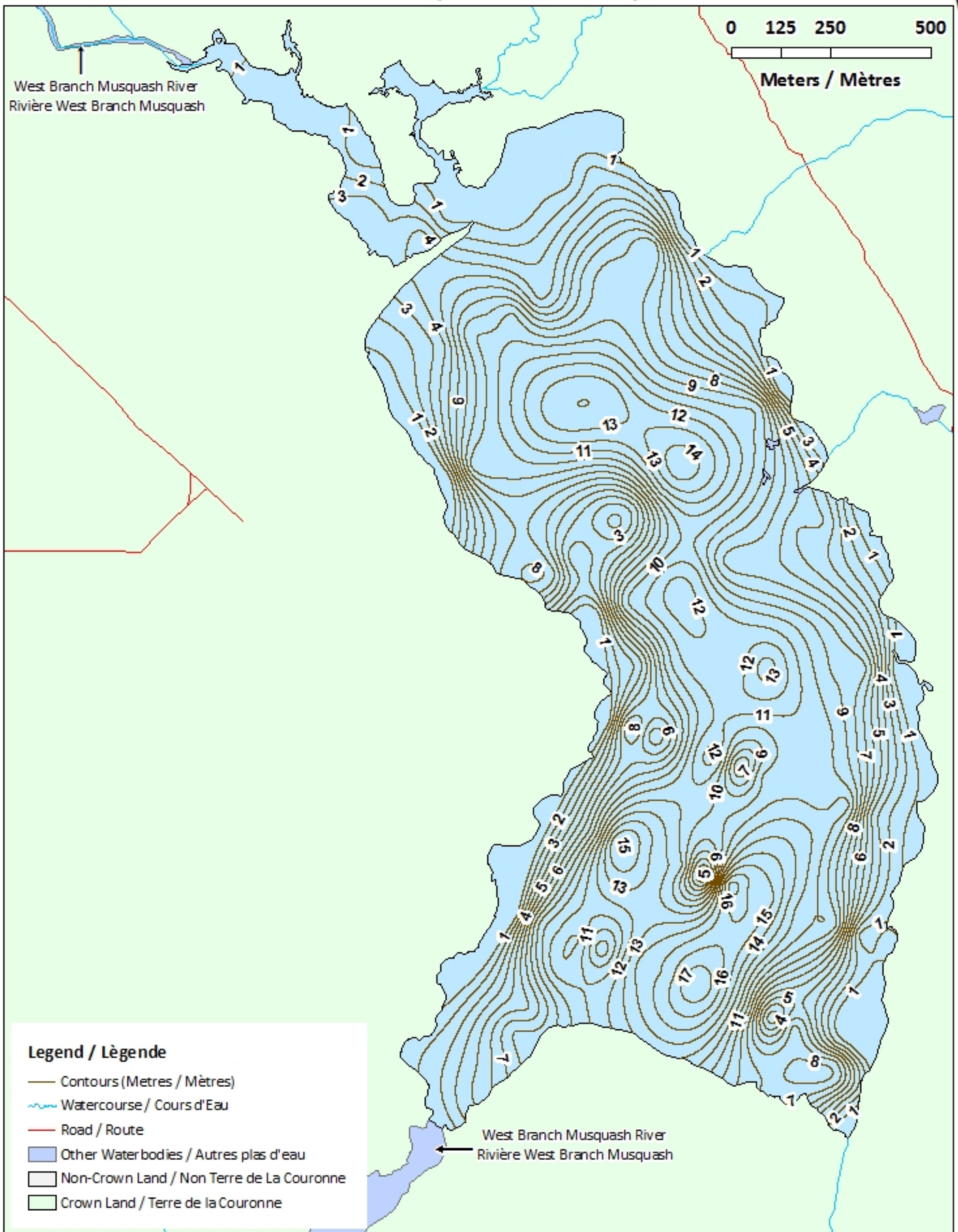
Contours (Metres / Mètres)



0 125 250 500

Meters / Mètres

West Branch Musquash River
Rivière West Branch Musquash



Legend / Légende

— Contours (Metres / Mètres)

~ Watercourse / Cours d'Eau

— Road / Route

Other Water bodies / Autres plans d'eau

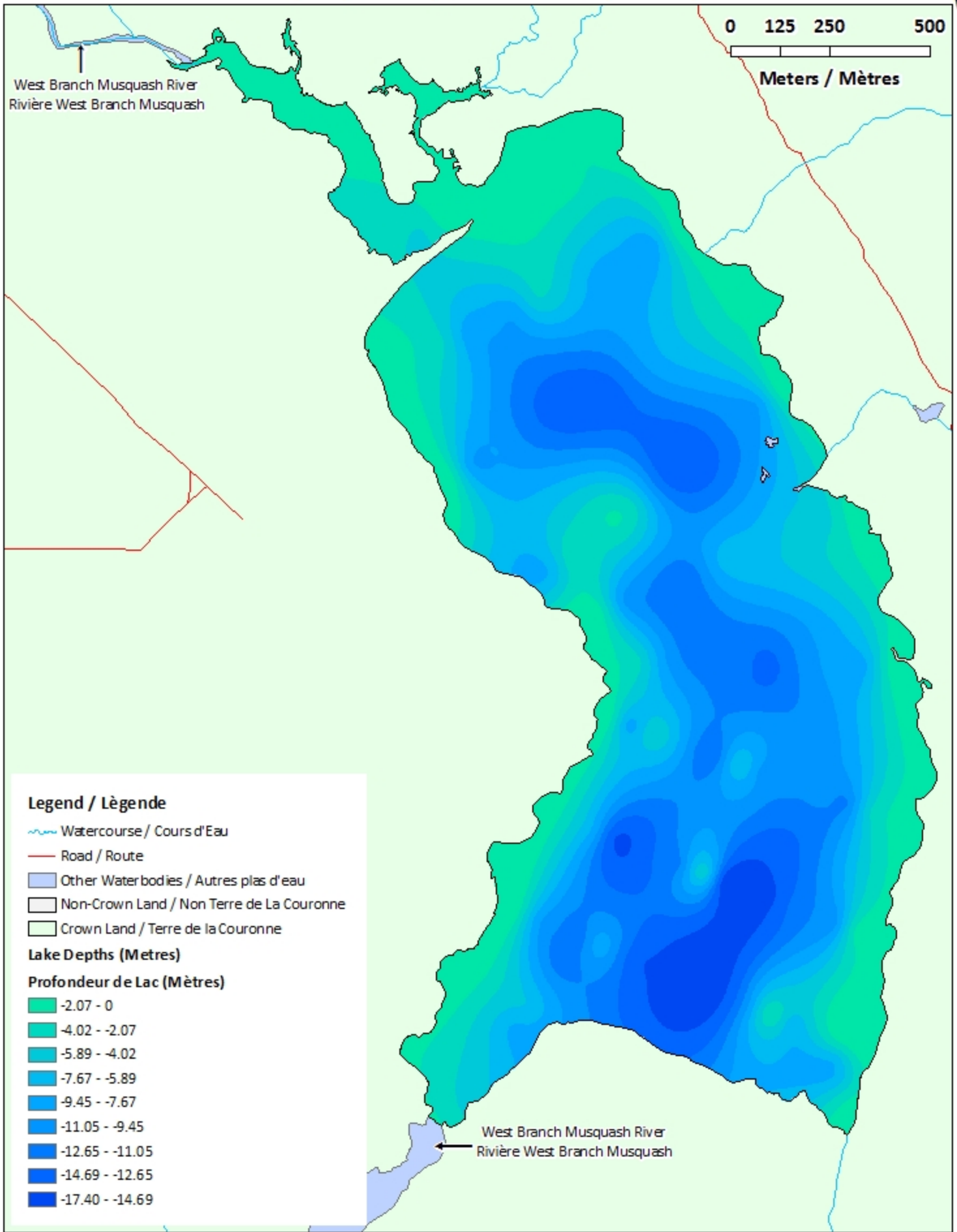
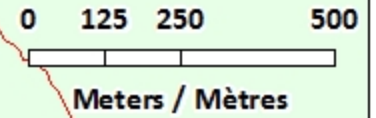
Non-Crown Land / Non Terre de La Couronne

Crown Land / Terre de la Couronne

West Branch Musquash River
Rivière West Branch Musquash

Sherwood Lake / Lac Sherwood

Depth (Metres) / Profondeur (Mètres)



West Branch Musquash River
Rivière West Branch Musquash

West Branch Musquash River
Rivière West Branch Musquash

Legend / Légende

- Watercourse / Cours d'Eau
- Road / Route
- Other Water bodies / Autres plans d'eau
- Non-Crown Land / Non Terre de La Couronne
- Crown Land / Terre de la Couronne

Lake Depths (Metres)

Profondeur de Lac (Mètres)

- 2.07 - 0
- 4.02 - -2.07
- 5.89 - -4.02
- 7.67 - -5.89
- 9.45 - -7.67
- 11.05 - -9.45
- 12.65 - -11.05
- 14.69 - -12.65
- 17.40 - -14.69