

Neary Pond / Étang Neary

Victoria County / Comté de Victoria

*Upper Saint John Recreational Fishing Area /
Zone de Pêche Récréative de Haut Saint-Jean*

47°10'58.8"N 67°02'57.7"W

Neary Pond / Étang Neary

Note: *The following maps are not designed for navigation purposes. Please exercise caution when using these maps as some shoals may not appear.*

Remarque: *Les cartes suivantes ne sont pas conçues à des fins de navigation. Faites preuve de prudence lors de l'utilisation de ces cartes, car certains hauts-fonds peuvent ne pas apparaître.*

<u>Lake Characteristics</u>	<u>Caractéristiques du lac</u>
Surface Area : 9.3 hectares / 23.0 acres Maximum Depth : 3.0 metres / 10 feet	Superficie : 9.3 hectares / 23.0 acres Profondeur maximale : 3.0 mètres / 10 pieds

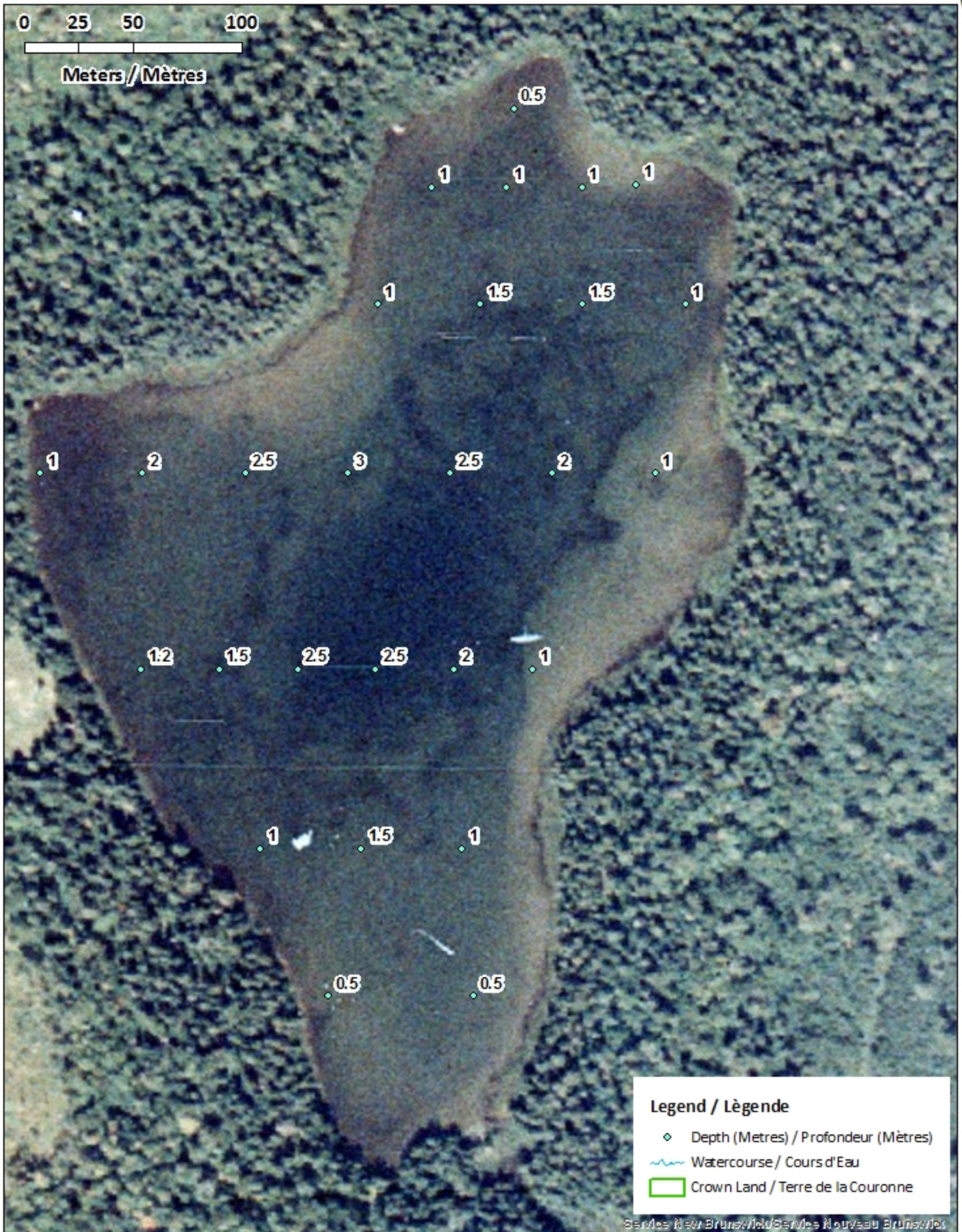
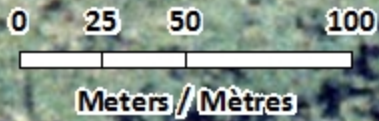
<u>Species Present</u>	<u>Espèce Présente</u>
Sport Fish Brook Trout	Poisson sportif Truite mouchetée (Ombles de fontaine)
Non-Sport Fish	Poisson non sportif

This lake is not part of the fish stocking program.

Ce lac ne fait pas partie du programme d'empoissonnement.

Neary Pond / Étang Neary

Depth Readings (Metres) / Indications de Profondeur (Mètres)

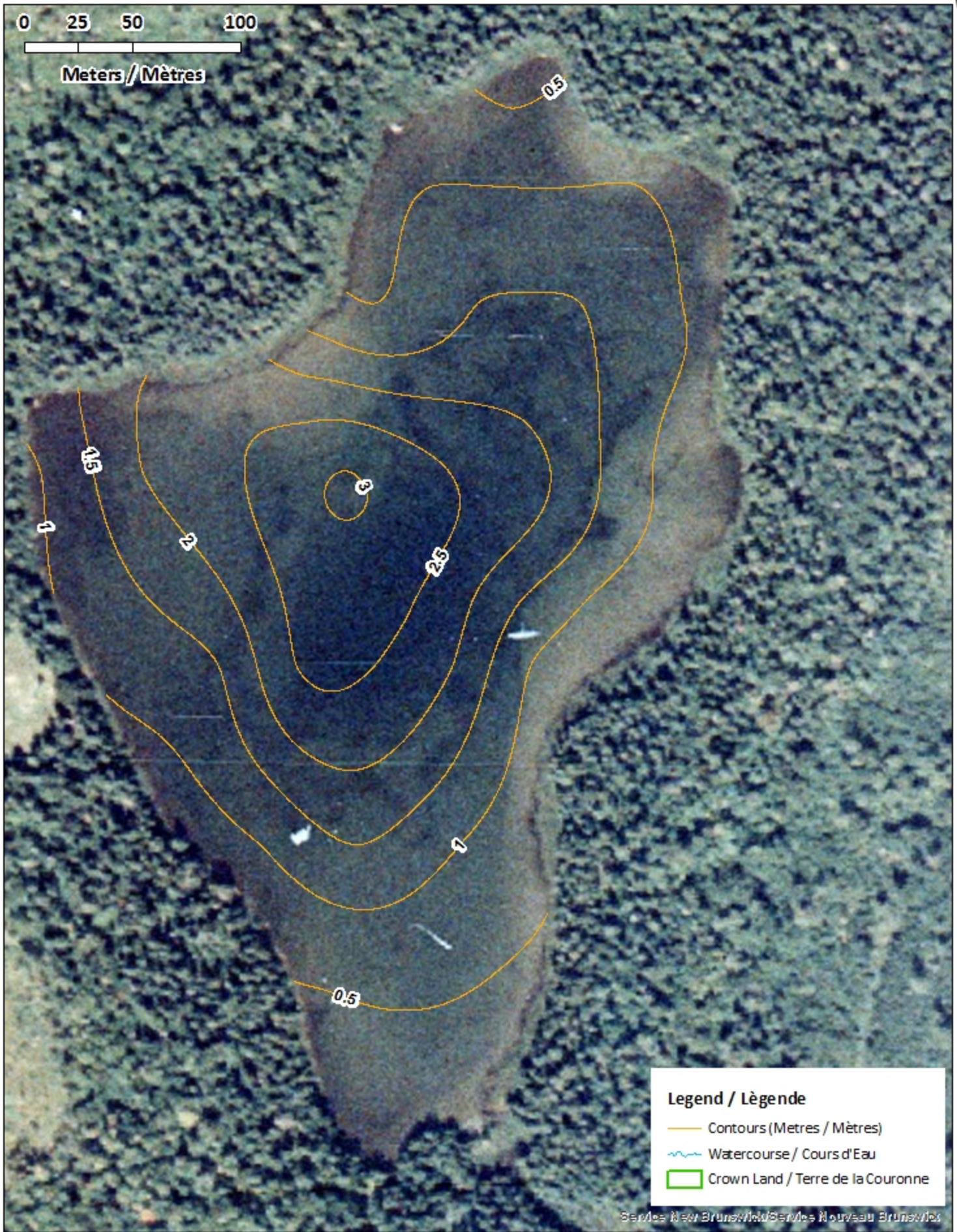
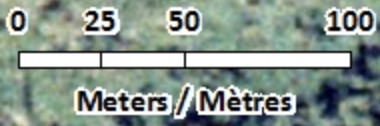


Legend / Légende

- ◆ Depth (Metres) / Profondeur (Mètres)
- ~ Watercourse / Cours d'Eau
- Crown Land / Terre de la Couronne

Neary Pond / Étang Neary

Contours (Metres / Mètres)



Legend / Légende

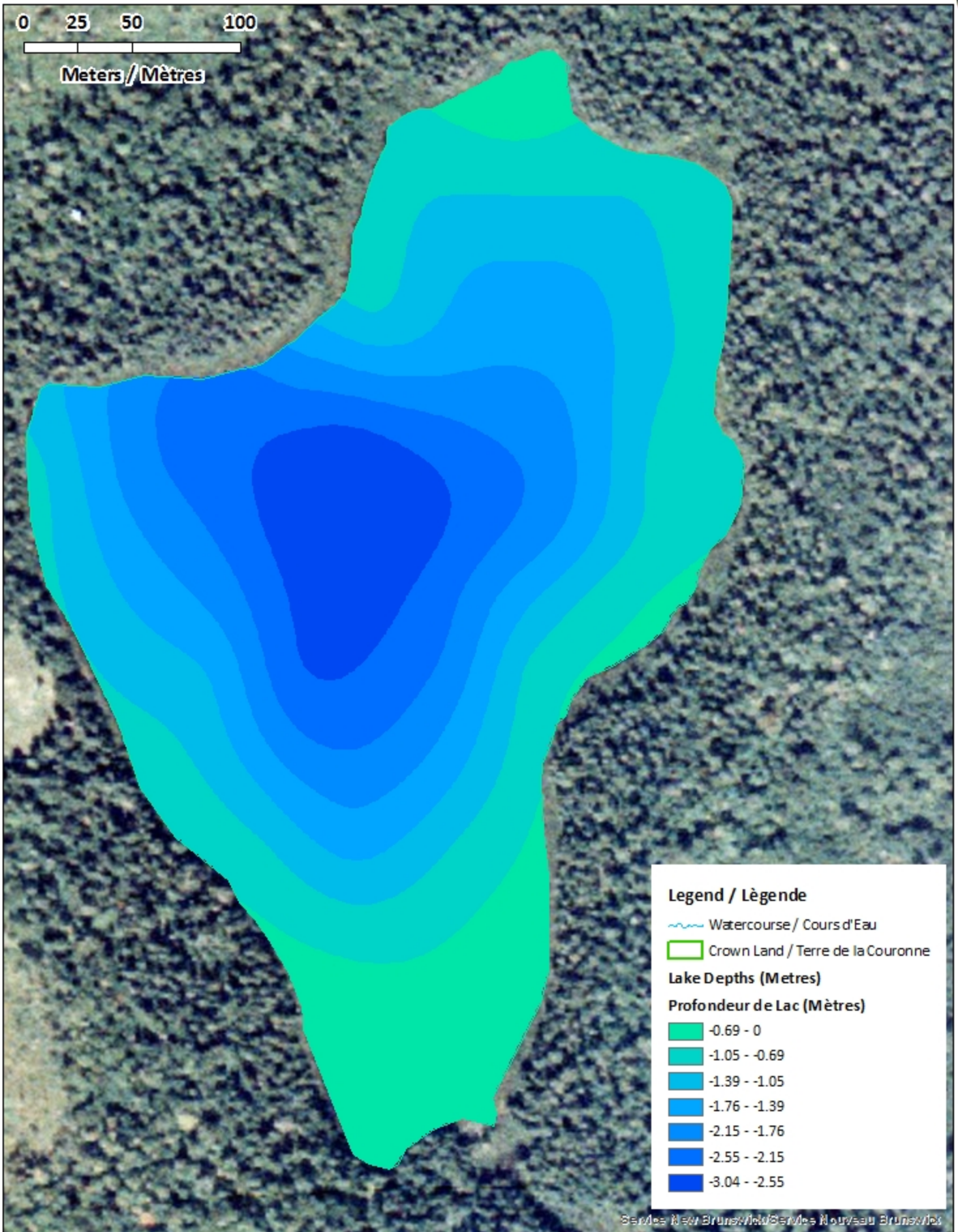
- Contours (Metres / Mètres)
- ~ Watercourse / Cours d'Eau
- Crown Land / Terre de la Couronne

Neary Pond / Étang Neary

Depth (Metres) / Profondeur (Mètres)



0 25 50 100
Meters / Mètres

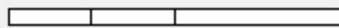


Neary Pond / Étang Neary

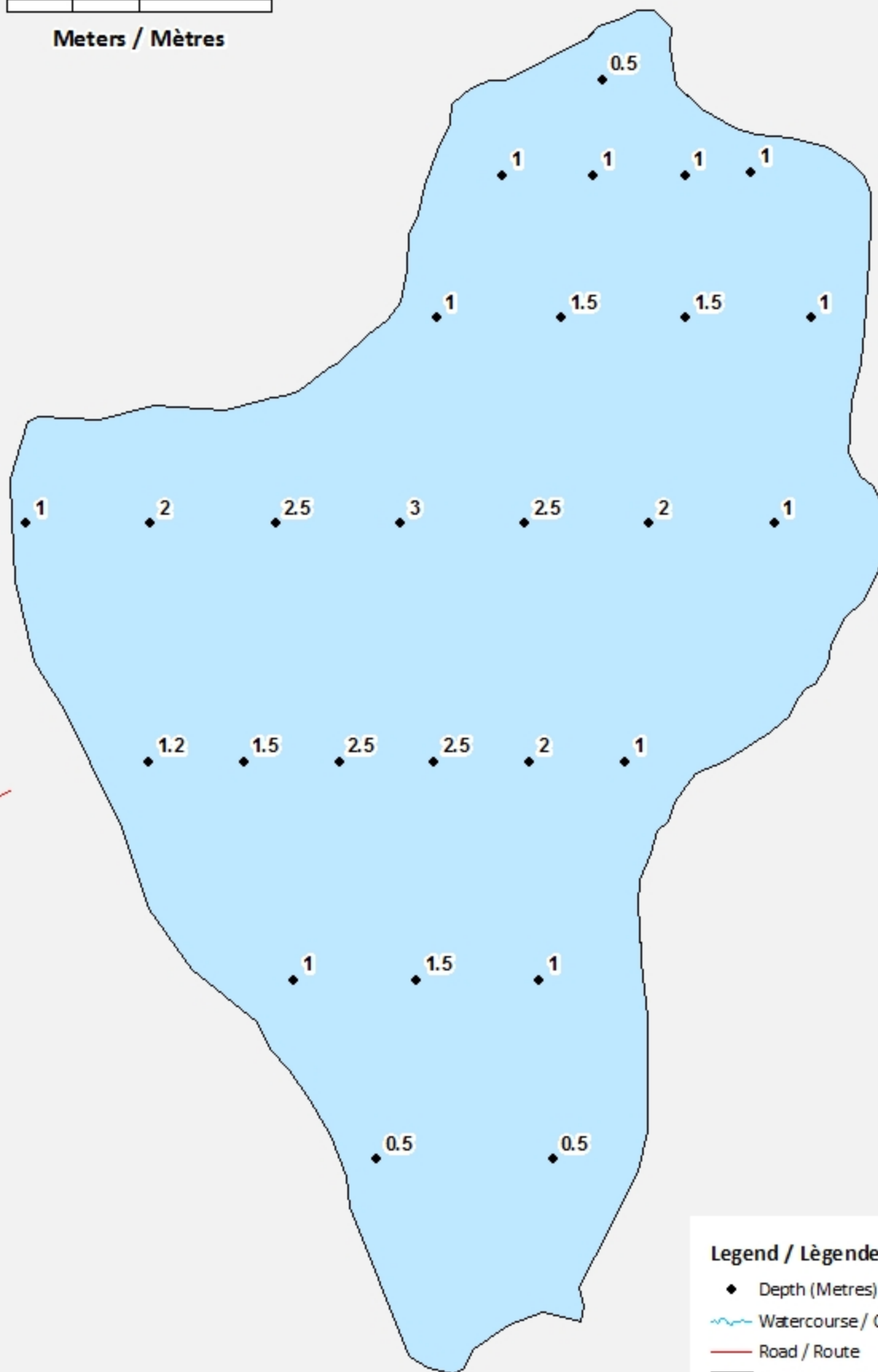
Depth Readings (Metres) / Indications de Profondeur (Mètres)



0 25 50 100



Meters / Mètres



Legend / Légende

◆ Depth (Metres) / Profondeur (Mètres)

~ Watercourse / Cours d'Eau

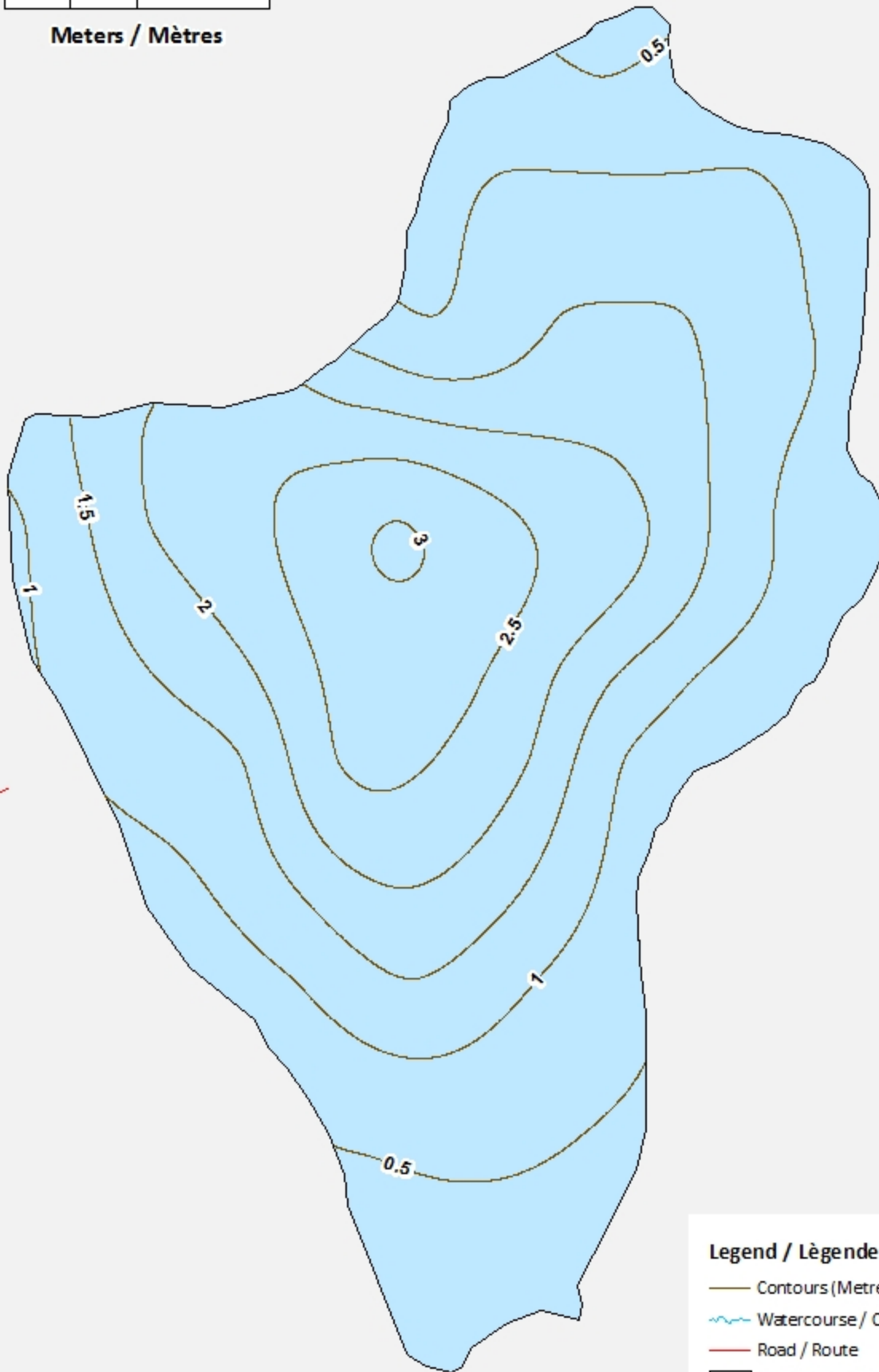
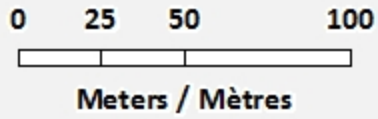
— Road / Route

□ Non-Crown Land / Non Terre de La Couronne

□ Crown Land / Terre de la Couronne

Neary Pond / Étang Neary

Contours (Metres / Mètres)



Legend / Légende

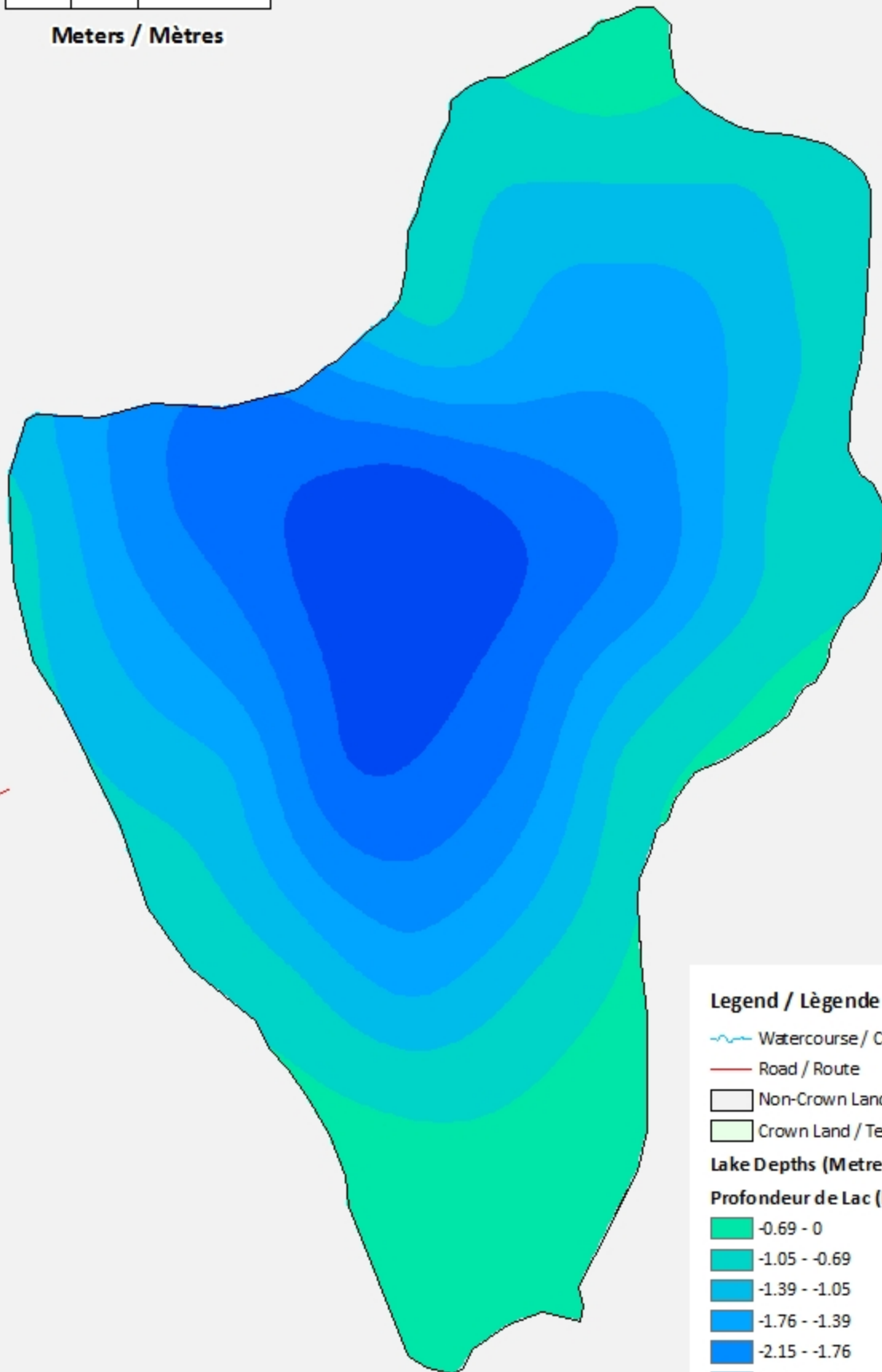
- Contours (Metres / Mètres)
- ~ Watercourse / Cours d'Eau
- Road / Route
- Non-Crown Land / Non Terre de La Couronne
- Crown Land / Terre de la Couronne

Neary Pond / Étang Neary


Depth (Metres) / Profondeur (Mètres)




0 25 50 100
Meters / Mètres




Legend / Légende

 Watercourse / Cours d'Eau


 Road / Route

 Non-Crown Land / Non Terre de La Couronne


 Crown Land / Terre de la Couronne


Lake Depths (Metres)


Profondeur de Lac (Mètres)


 -0.69 - 0

 -1.05 - -0.69

 -1.39 - -1.05

 -1.76 - -1.39

 -2.15 - -1.76

 -2.55 - -2.15

 -3.04 - -2.55