

## Muddy Lake / Lac Muddy

*Gloucester County / Comté de Gloucester*

*Chaleur Recreational Fishing Area /  
Zone de Pêche Récréative de Baie des Chaleurs*

*47°24'05.1"N 66°01'03.5"W*

## Muddy Lake / Lac Muddy

**Note:** *The following maps are not designed for navigation purposes. Please exercise caution when using these maps as some shoals may not appear.*

**Remarque:** *Les cartes suivantes ne sont pas conçues à des fins de navigation. Faites preuve de prudence lors de l'utilisation de ces cartes, car certains hauts-fonds peuvent ne pas apparaître.*

<u>Lake Characteristics</u>	<u>Caractéristiques du lac</u>
Surface Area : 11.5 hectares / 28.4 acres Maximum Depth : 1.2 metres / 4 feet	Superficie : 11.5 hectares / 28.4 acres Profondeur maximale : 1.2 mètres / 4 pieds

<u>Species Present</u>	<u>Espèce Présente</u>
<b>Sport Fish</b> Brook Trout	<b>Poisson sportif</b> Truite mouchetée (Ombles de fontaine)
<b>Non-Sport Fish</b>	<b>Poisson non sportif</b>

This lake is not part of the fish stocking program.

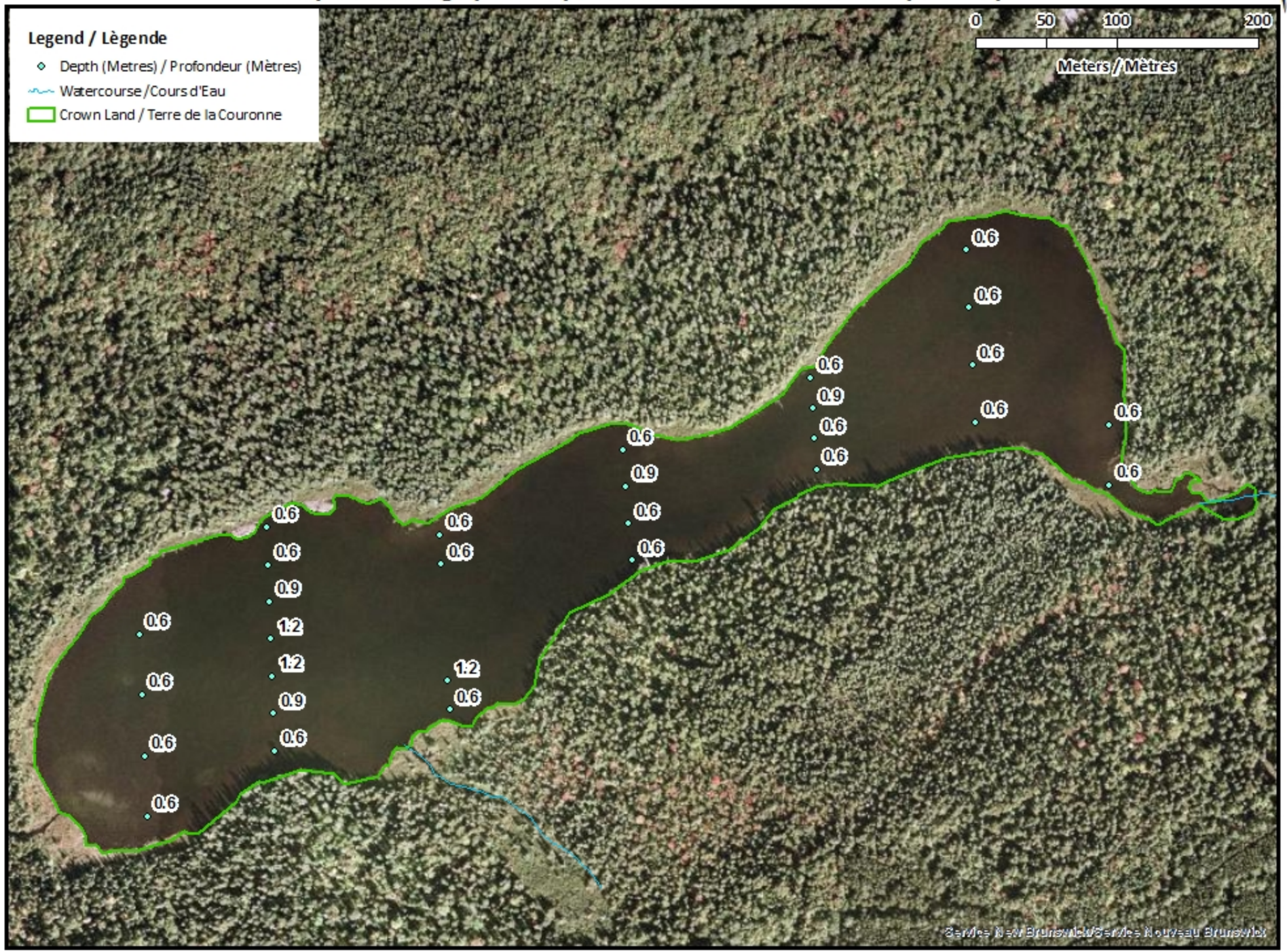
Ce lac ne fait pas partie du programme d'empoissonnement.

# Muddy Lake / Lac Muddy

## Depth Readings (Metres) / Indications de Profondeur (Mètres)

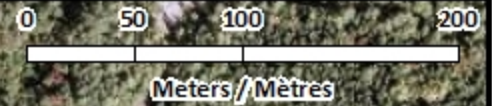


- Legend / Légende**
- ◆ Depth (Metres) / Profondeur (Mètres)
  - ~ Watercourse / Cours d'Eau
  - Crown Land / Terre de la Couronne



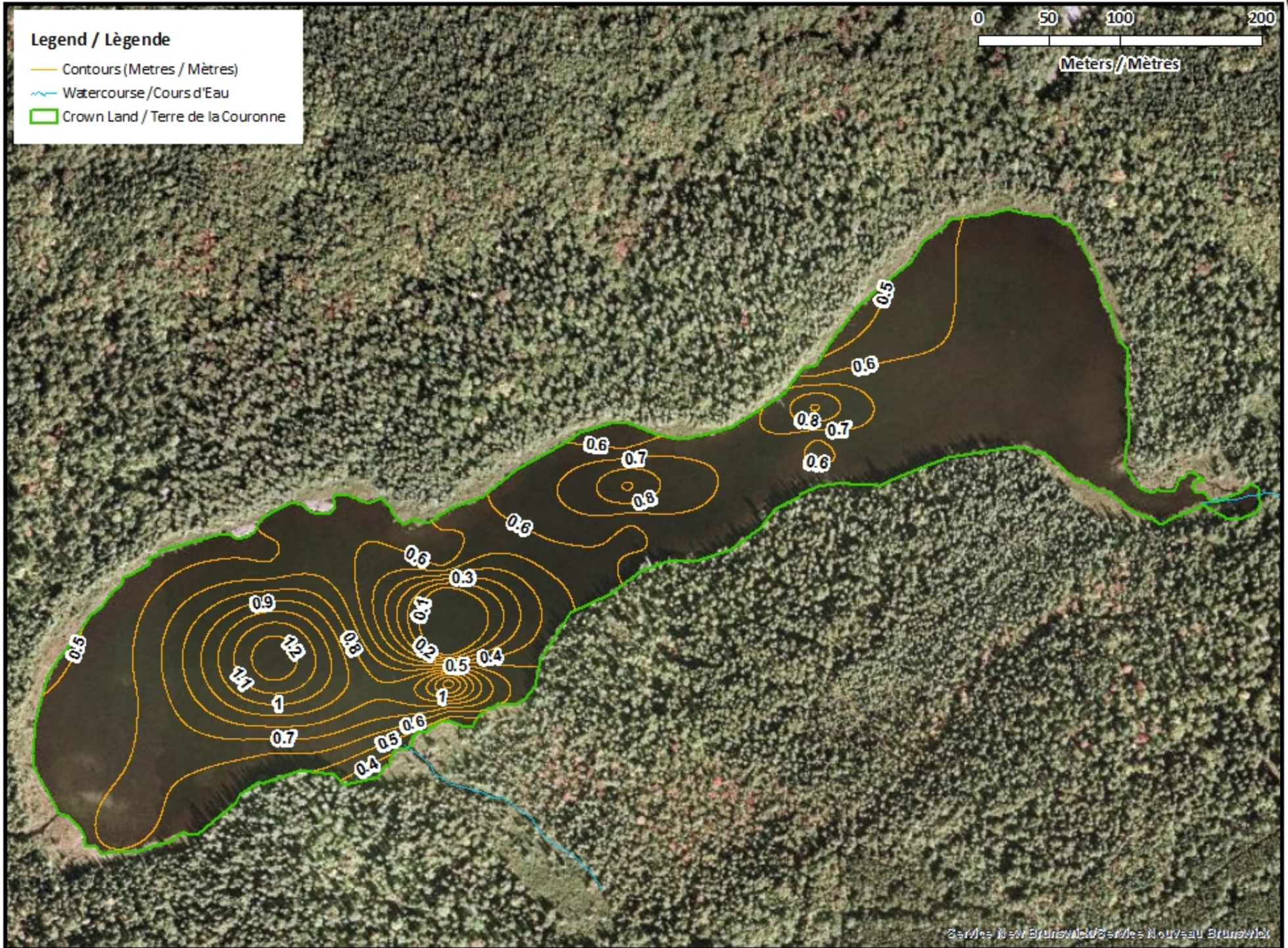
# Muddy Lake / Lac Muddy

## Contours (Metres / Mètres)



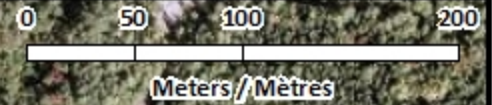
**Legend / Légende**

- Contours (Metres / Mètres)
- Watercourse / Cours d'Eau
- Crown Land / Terre de la Couronne





# Muddy Lake / Lac Muddy

## Depth (Metres) / Profondeur (Mètres)










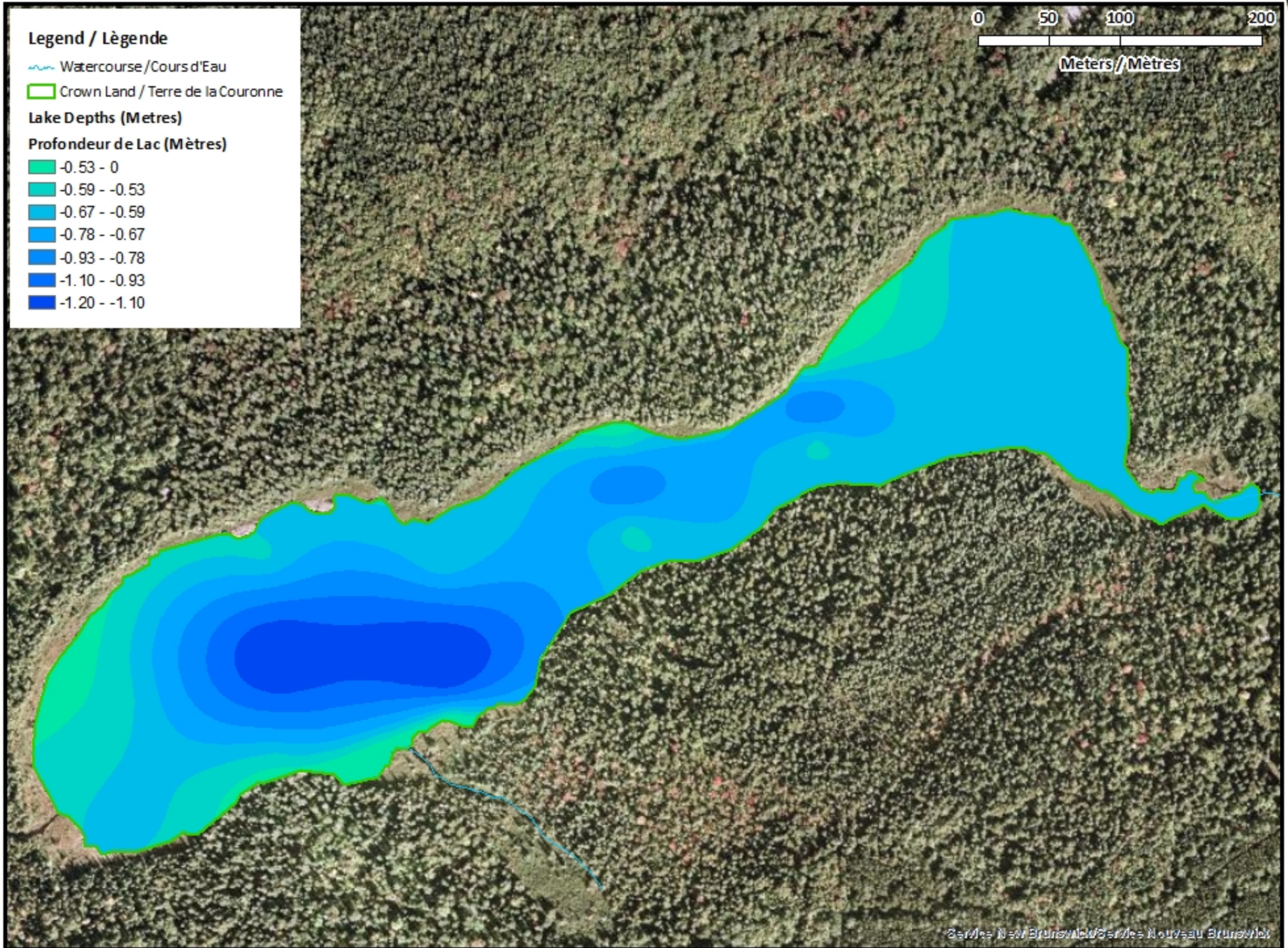
### Legend / Légende

-  Watercourse / Cours d'Eau
-  Crown Land / Terre de la Couronne

### Lake Depths (Metres)

#### Profondeur de Lac (Mètres)

-  -0.53 - 0
-  -0.59 - -0.53
-  -0.67 - -0.59
-  -0.78 - -0.67
-  -0.93 - -0.78
-  -1.10 - -0.93
-  -1.20 - -1.10



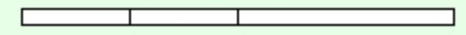


# Muddy Lake / Lac Muddy

## Contours (Metres / Mètres)



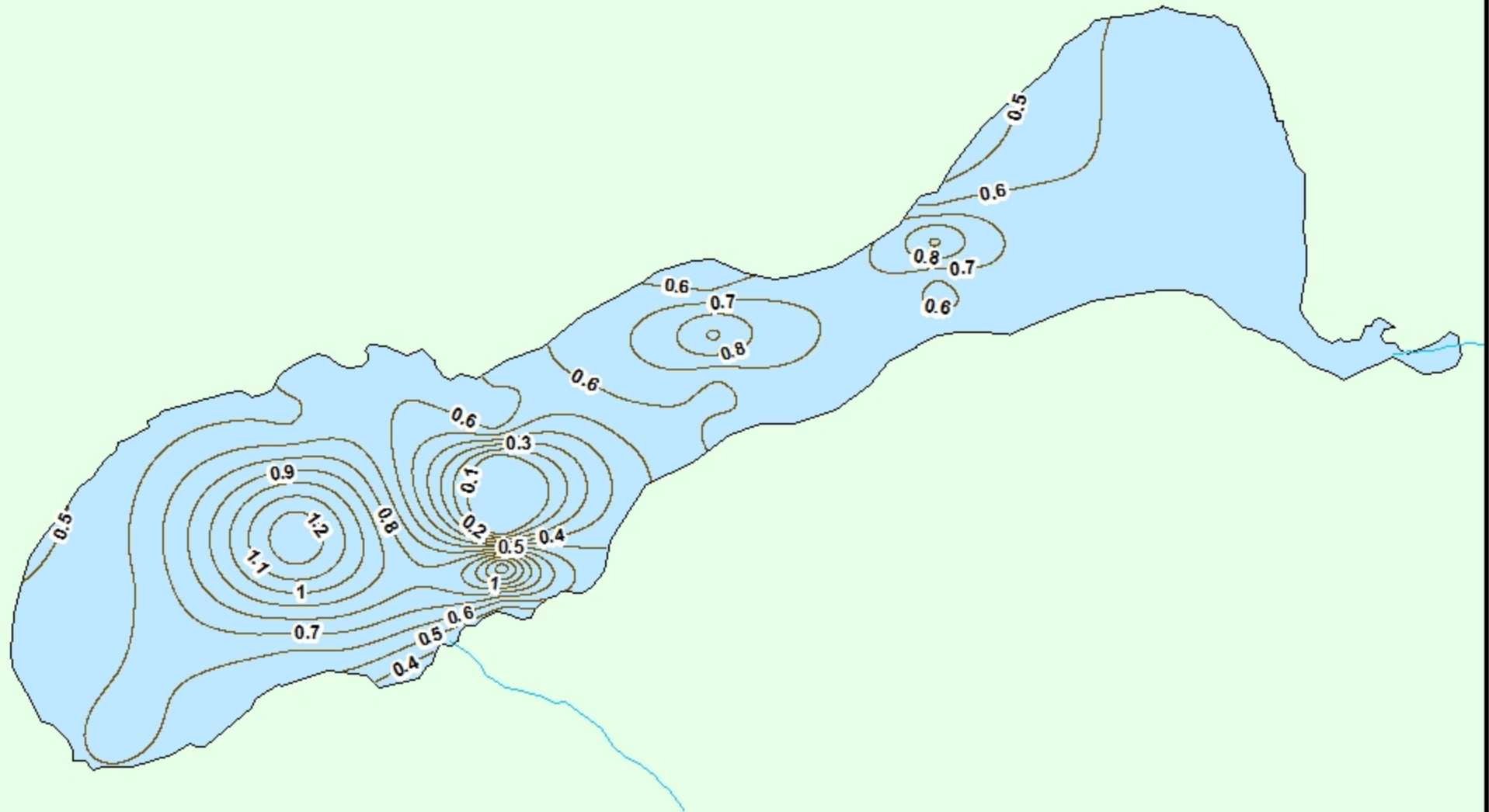
0 50 100 200



Meters / Mètres

### Legend / Légende

- Contours (Metres / Mètres)
- ~ Watercourse / Cours d'Eau
- Road / Route
- Non-Crown Land / Non Terre de La Couronne
- Crown Land / Terre de la Couronne

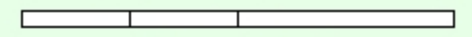


# Muddy Lake / Lac Muddy

## Depth (Metres) / Profondeur (Mètres)







0 50 100 200










Meters / Mètres

### Legend / Légende

-  Watercourse / Cours d'Eau
-  Road / Route
-  Non-Crown Land / Non Terre de La Couronne
-  Crown Land / Terre de la Couronne

### Lake Depths (Metres)

#### Profondeur de Lac (Mètres)

-  -0.53 - 0
-  -0.59 - -0.53
-  -0.67 - -0.59
-  -0.78 - -0.67
-  -0.93 - -0.78
-  -1.10 - -0.93
-  -1.20 - -1.10

