

McKendrick Lake / Lac McKendrick

Northumberland County / Comté de Northumberland

*Miramichi Recreational Fishing Area /
Zone de Pêche Récréative de Miramichi*

46°51'10.0"N 66°21'41.8"W

McKendrick Lake / Lac McKendrick

Note: *The following maps are not designed for navigation purposes. Please exercise caution when using these maps as some shoals may not appear.*

Remarque: *Les cartes suivantes ne sont pas conçues à des fins de navigation. Faites preuve de prudence lors de l'utilisation de ces cartes, car certains hauts-fonds peuvent ne pas apparaître.*

<u>Lake Characteristics</u>	<u>Caractéristiques du lac</u>
Surface Area : 73.7 hectares / 182.1 acres Maximum Depth : 6.7 metres / 22 feet	Superficie : 73.7 hectares / 182.1 acres Profondeur maximale : 6.7 mètres / 22 pieds

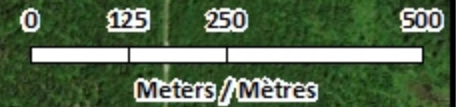
<u>Species Present</u>	<u>Espèce Présente</u>
Sport Fish Brook Trout	Poisson sportif Truite mouchetée (Omble de fontaine)
Non-Sport Fish American Eel Golden Shiner Lake Chub Pearl Dace White Sucker	Poisson non sportif Anguille d'Amérique Méné jaune Méné de lac Mulet perlé Meunier noir

This lake is currently part of the fish stocking program (Brook Trout).

Ce lac fait actuellement partie du programme d'empoissonnement (Omble de fontaine).

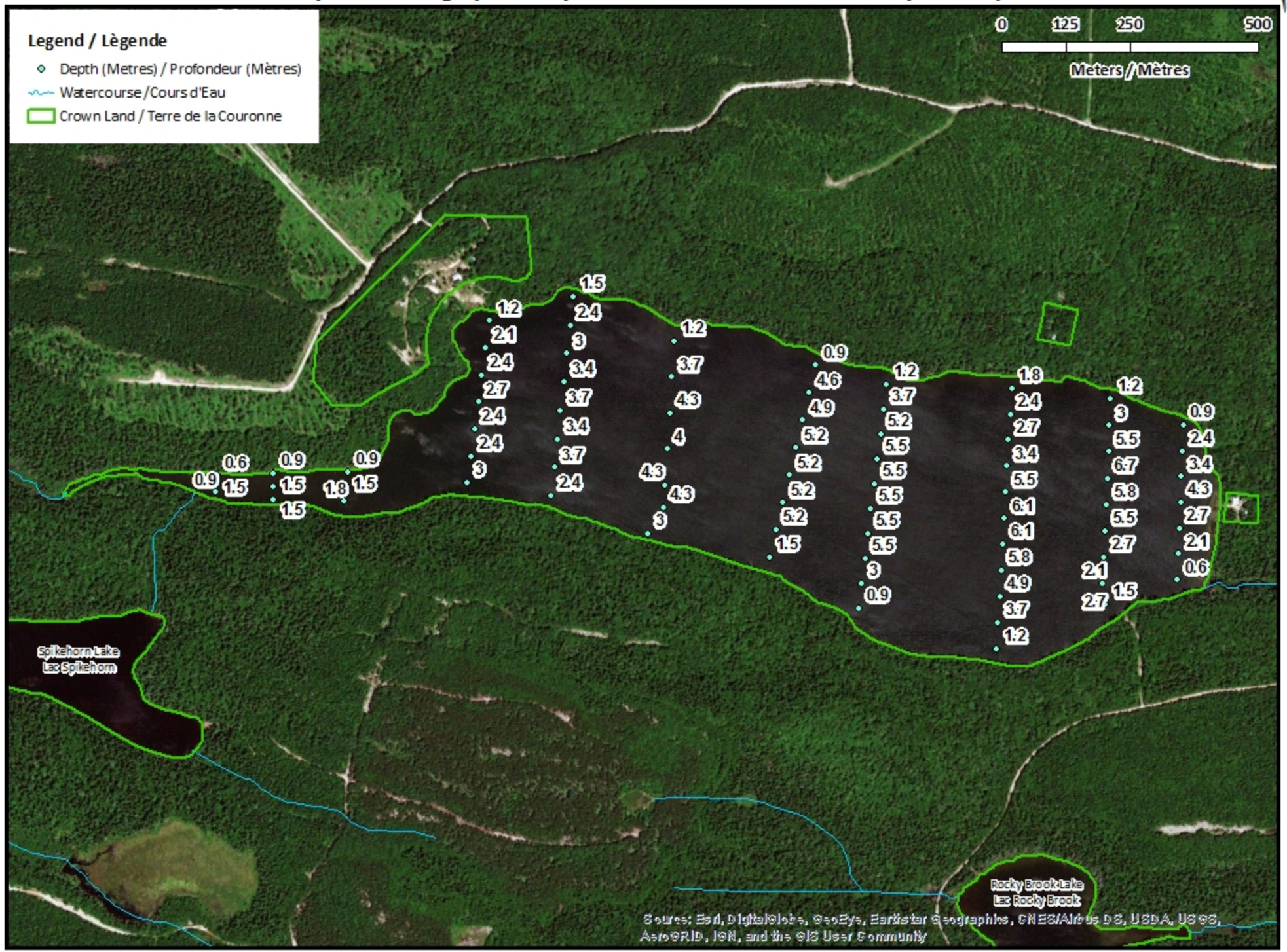
McKendrick Lake / Lac McKendrick

Depth Readings (Metres) / Indications de Profondeur (Mètres)



Legend / Légende

- ◆ Depth (Metres) / Profondeur (Mètres)
- ~ Watercourse / Cours d'Eau
- Crown Land / Terre de la Couronne



Source: Esri, DigitalGlobe, GeoEye, Earthstar Geographics, CNES/Airbus DS, USDA, USGS, AeroGRID, IGN, and the GIS User Community

McKendrick Lake / Lac McKendrick

Contours (Metres / Mètres)

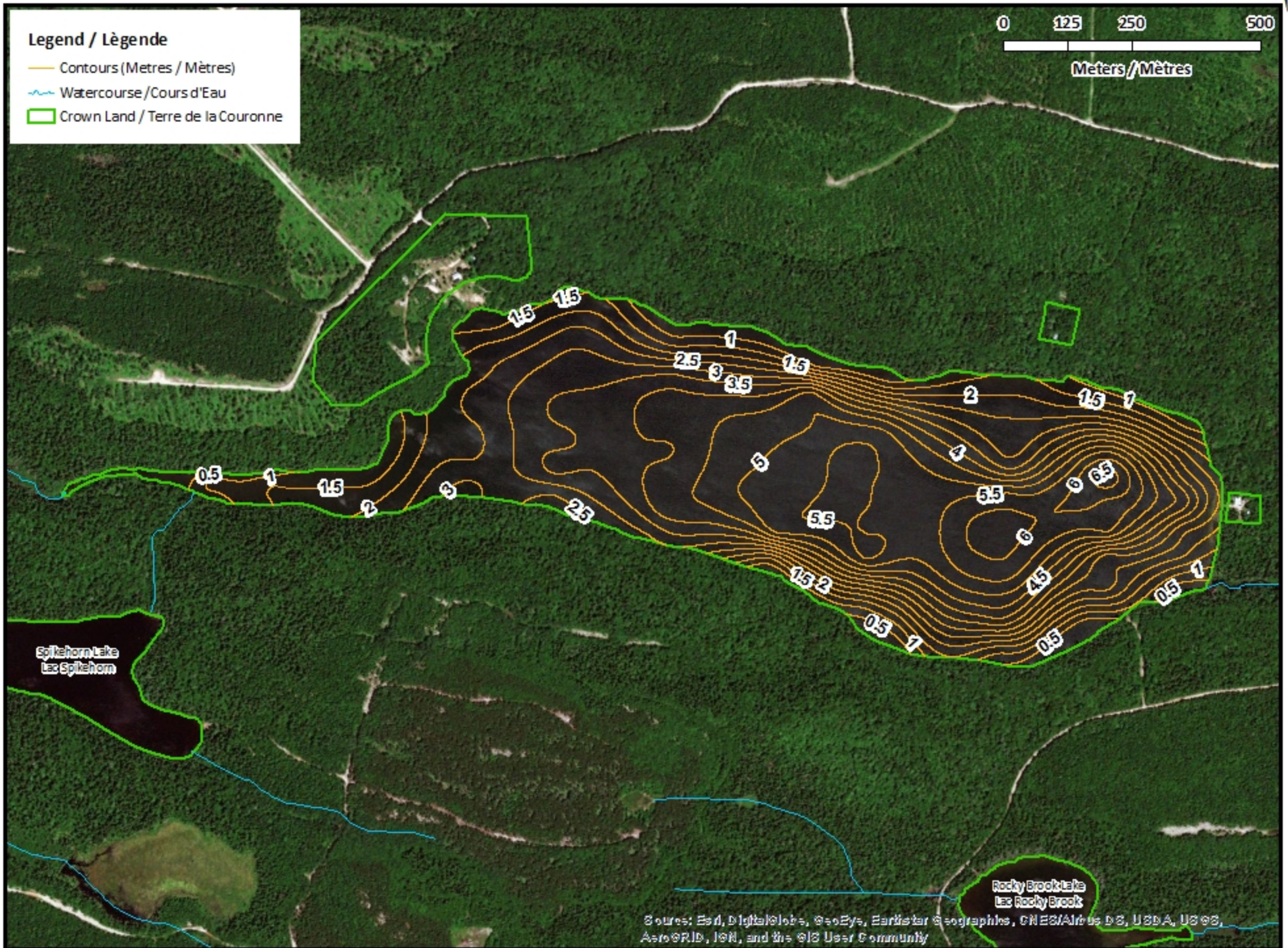


Legend / Légende

- Contours (Metres / Mètres)
- Watercourse / Cours d'Eau
- Crown Land / Terre de la Couronne

0 125 250 500

Meters / Mètres



Source: Esri, DigitalGlobe, GeoEye, Earthstar Geographics, CNES/Airbus DS, USDA, USGS, AeroGRID, IGN, and the GIS User Community

McKendrick Lake / Lac McKendrick












Depth (Metres) / Profondeur (Mètres)

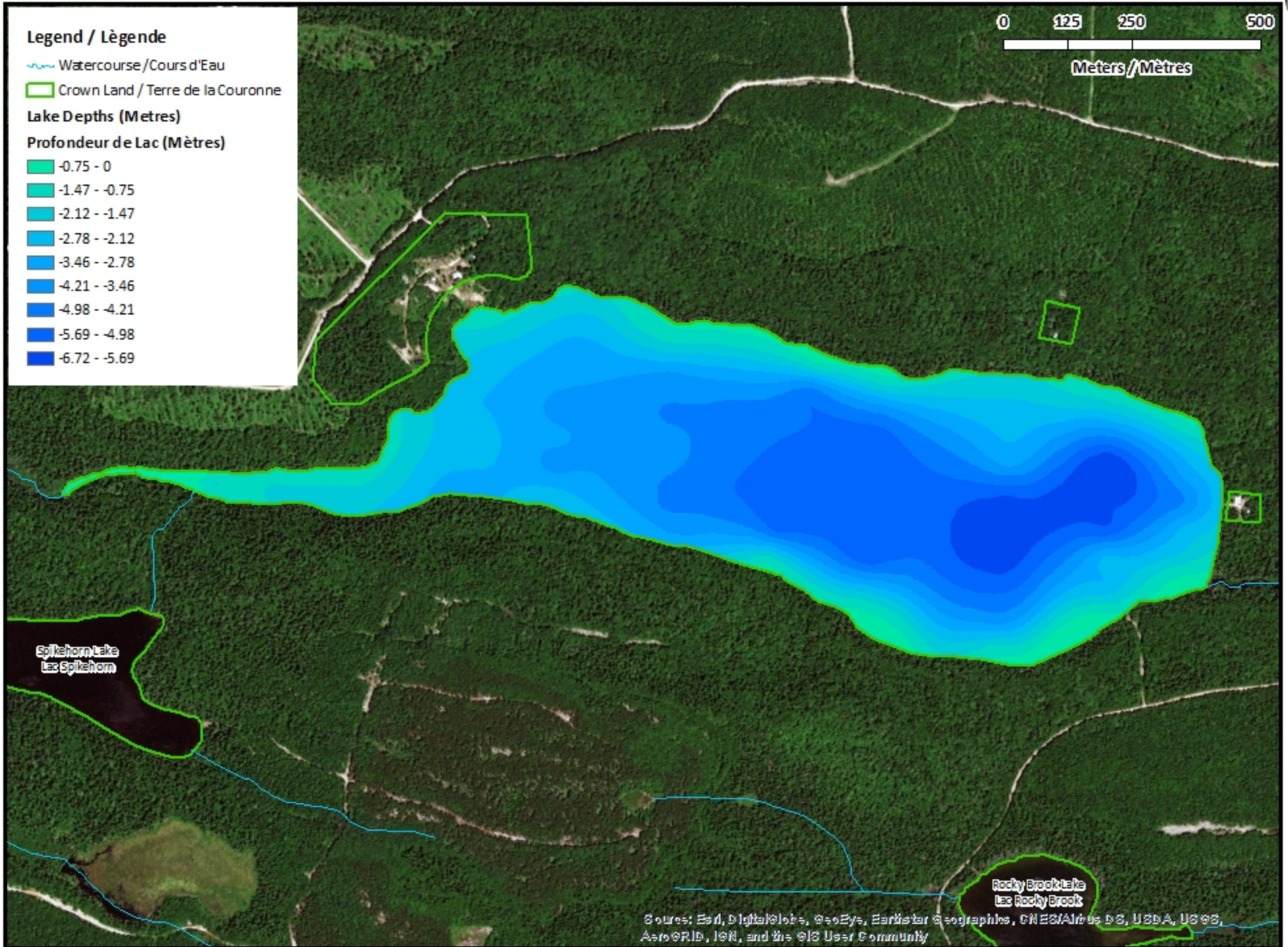


0 125 250 500

Meters / Mètres

Legend / Légende

-  Watercourse / Cours d'Eau
 -  Crown Land / Terre de la Couronne
- ### Lake Depths (Metres)
- ### Profondeur de Lac (Mètres)
-  -0.75 - 0
 -  -1.47 - -0.75
 -  -2.12 - -1.47
 -  -2.78 - -2.12
 -  -3.46 - -2.78
 -  -4.21 - -3.46
 -  -4.98 - -4.21
 -  -5.69 - -4.98
 -  -6.72 - -5.69



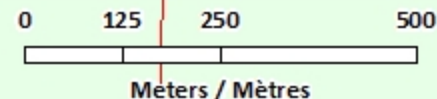
Spikehorn Lake
Lac Spikehorn

Rocky Brook Lake
Lac Rocky Brook

Sources: Esri, DigitalGlobe, GeoEye, Earthstar Geographics, CNES/Airbus DS, USDA, USGS, AeroGRID, IGN, and the GIS User Community

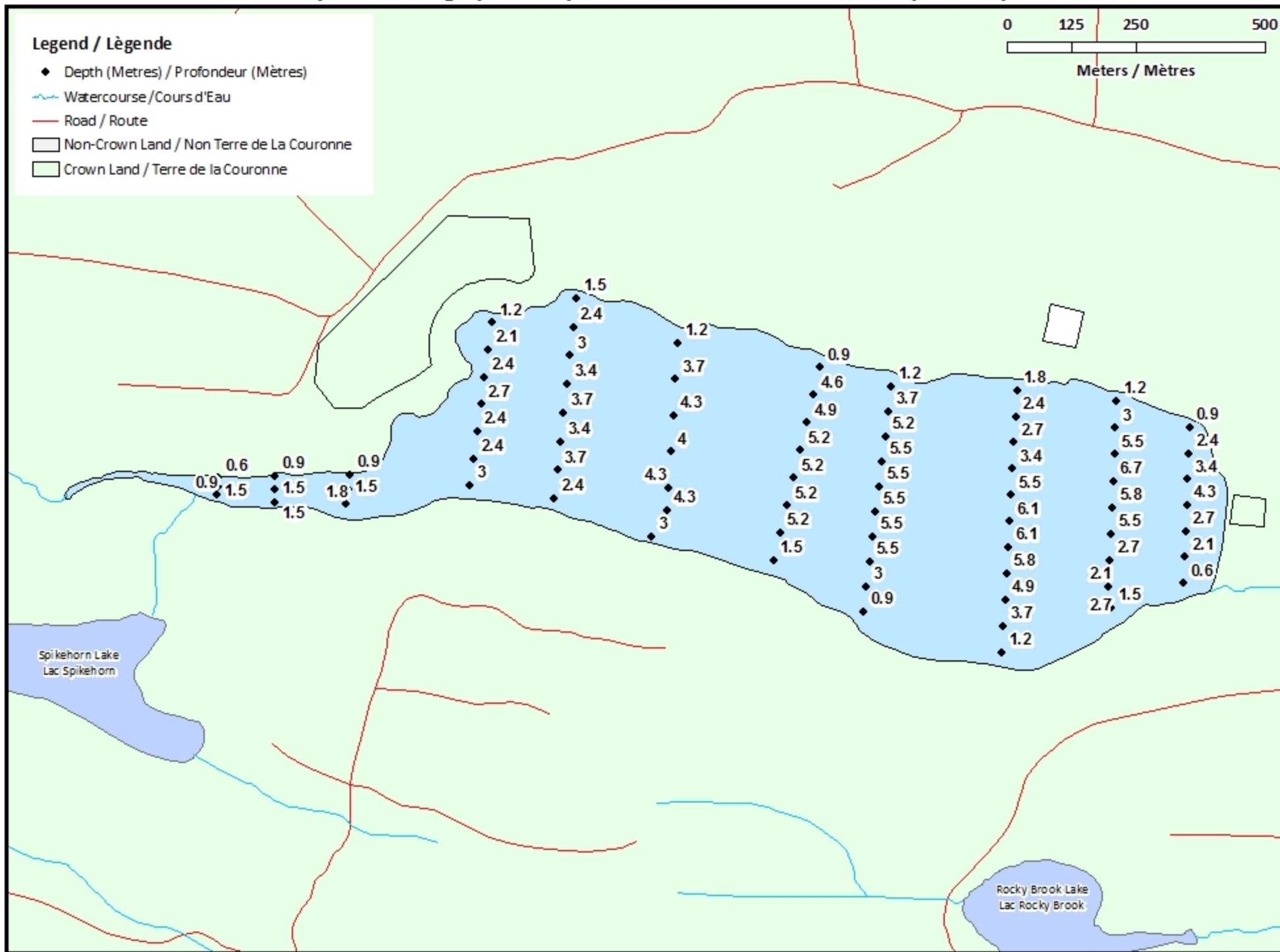
McKendrick Lake / Lac McKendrick

Depth Readings (Metres) / Indications de Profondeur (Mètres)



Legend / Légende

- ◆ Depth (Metres) / Profondeur (Mètres)
- ~ Watercourse / Cours d'Eau
- Road / Route
- Non-Crown Land / Non Terre de La Couronne
- Crown Land / Terre de la Couronne

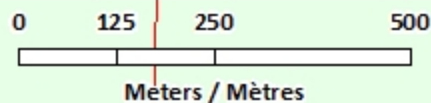


Spikehorn Lake
Lac Spikehorn

Rocky Brook Lake
Lac Rocky Brook

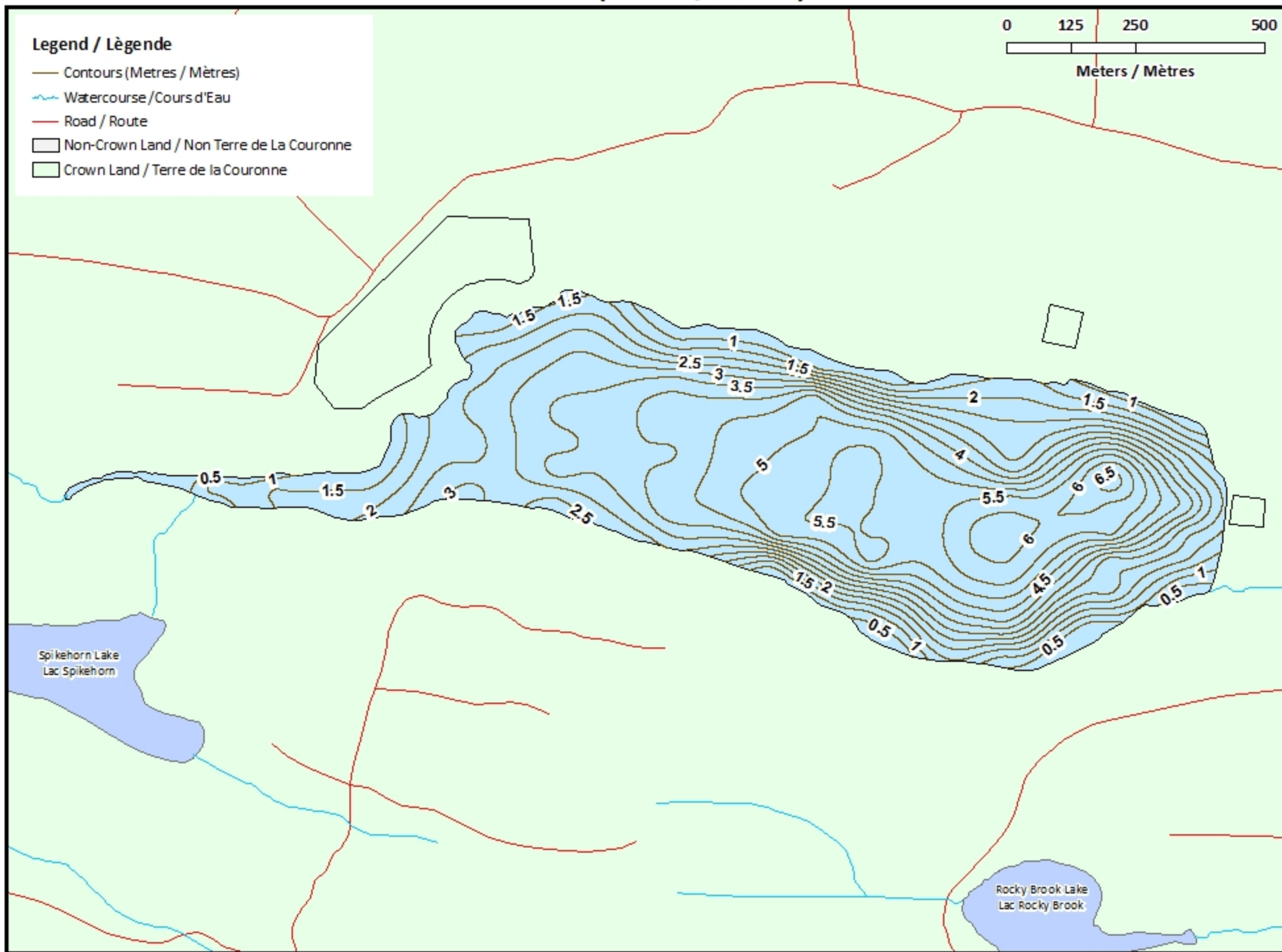
McKendrick Lake / Lac McKendrick

Contours (Metres / Mètres)



Legend / Légende

- Contours (Metres / Mètres)
- ~ Watercourse / Cours d'Eau
- Road / Route
- Non-Crown Land / Non Terre de La Couronne
- Crown Land / Terre de la Couronne



McKendrick Lake / Lac McKendrick

Depth (Metres) / Profondeur (Mètres)



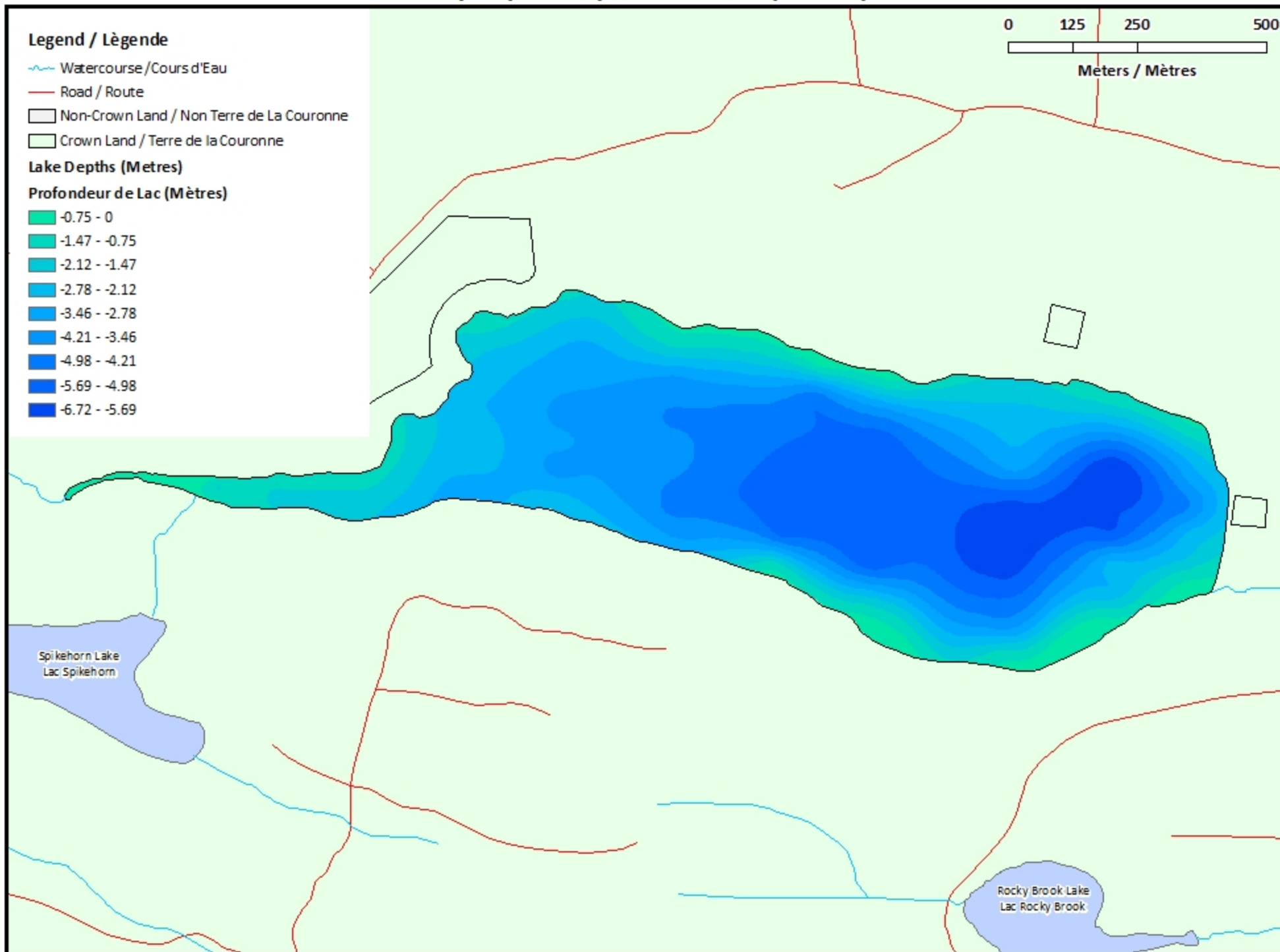
Legend / Légende

- Watercourse / Cours d'Eau
- Road / Route
- Non-Crown Land / Non Terre de La Couronne
- Crown Land / Terre de la Couronne

Lake Depths (Metres)

Profondeur de Lac (Mètres)

- 0.75 - 0
- 1.47 - -0.75
- 2.12 - -1.47
- 2.78 - -2.12
- 3.46 - -2.78
- 4.21 - -3.46
- 4.98 - -4.21
- 5.69 - -4.98
- 6.72 - -5.69



Spikehorn Lake
Lac Spikehorn

Rocky Brook Lake
Lac Rocky Brook