

McDougall Lake / Lac McDougall

Charlotte County / Comté de Charlotte

*Southwest Recreational Fishing Area /
Zone de Pêche Récréative de Sud-Ouest*

45°19'24.4"N 66°46'15.1"W

McDougall Lake / Lac McDougall

Note: *The following maps are not designed for navigation purposes. Please exercise caution when using these maps as some shoals may not appear.*

Remarque: *Les cartes suivantes ne sont pas conçues à des fins de navigation. Faites preuve de prudence lors de l'utilisation de ces cartes, car certains hauts-fonds peuvent ne pas apparaître.*

<u>Lake Characteristics</u>	<u>Caractéristiques du lac</u>
Surface Area : 300.2 hectares / 741.8 acres Maximum Depth : 13.1 metres / 43 feet	Superficie : 300.2 hectares / 741.8 acres Profondeur maximale : 13.1 mètres / 43 pieds

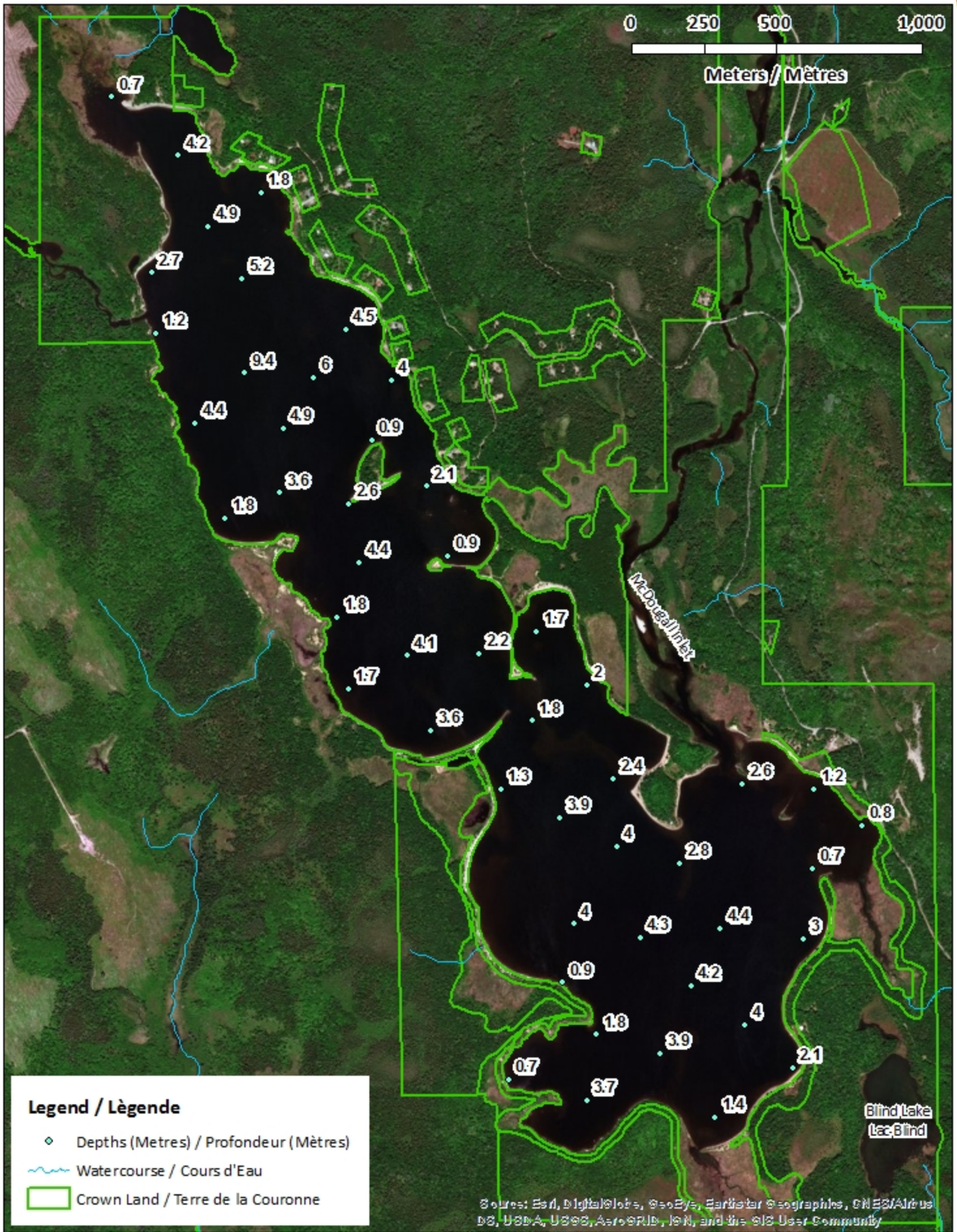
<u>Species Present</u>	<u>Espèce Présente</u>
Sport Fish Atlantic Salmon Brook Trout Smallmouth Bass	Poisson sportif Saumon atlantique Truite mouchetée (Omble de fontaine) Achigan à petite bouche
Non-Sport Fish American Eel Banded Killifish Brown Bullhead Common Shiner Fallfish Golden Shiner Pumpkinseed White Sucker Yellow Perch	Poisson non sportif Anguille d'Amérique Fondule barré Barbotte brune Méné à nageoires rouges Quitouche Méné jaune Crapet-soleil Meunier noir Perchaude

This lake is not part of the fish stocking program.

Ce lac ne fait pas partie du programme d'empoissonnement.

McDougall Lake / Lac McDougall

Depth Readings (Metres) / Indications de Profondeur (Mètres)



Legend / Légende

- ◆ Depths (Metres) / Profondeur (Mètres)
- ~ Watercourse / Cours d'Eau
- Crown Land / Terre de la Couronne

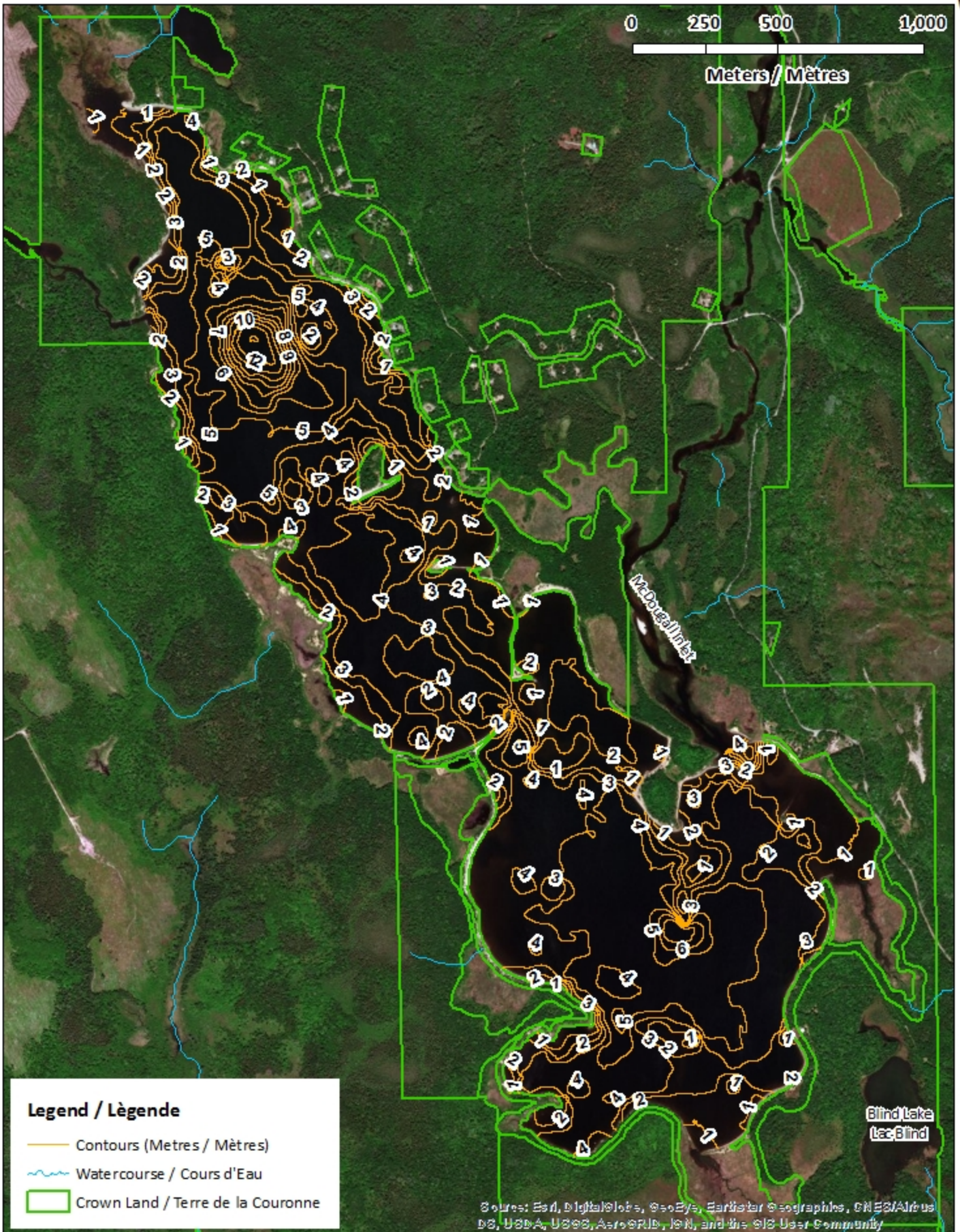
Source: Esri, DigitalGlobe, GeoEye, Earthstar Geographics, CNES/Airbus DS, USDA, USGS, AeroGRID, IGN, and the GIS User Community

McDougall Lake / Lac McDougall

Contours (Metres / Mètres)



0 250 500 1,000
Meters / Mètres



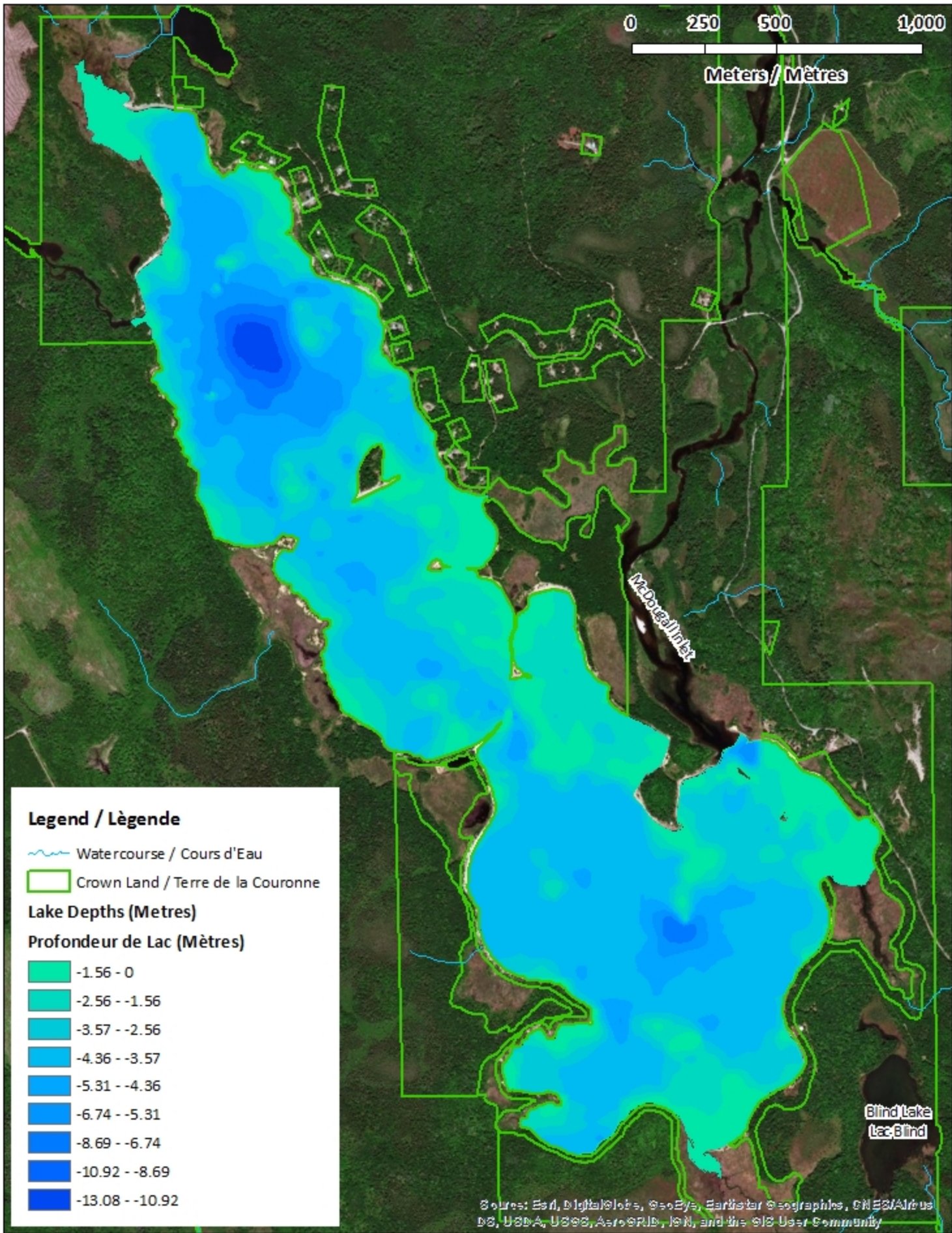
Legend / Légende

- Contours (Metres / Mètres)
- Watercourse / Cours d'Eau
- Crown Land / Terre de la Couronne



Source: Esri, DigitalGlobe, GeoEye, Earthstar Geographics, CNES/Airbus DS, USDA, USGS, AeroGRID, IGN, and the GIS User Community

McDougall Lake / Lac McDougall

Depth (Metres) / Profondeur (Mètres)












Legend / Légende

-  Watercourse / Cours d'Eau
-  Crown Land / Terre de la Couronne

Lake Depths (Metres)

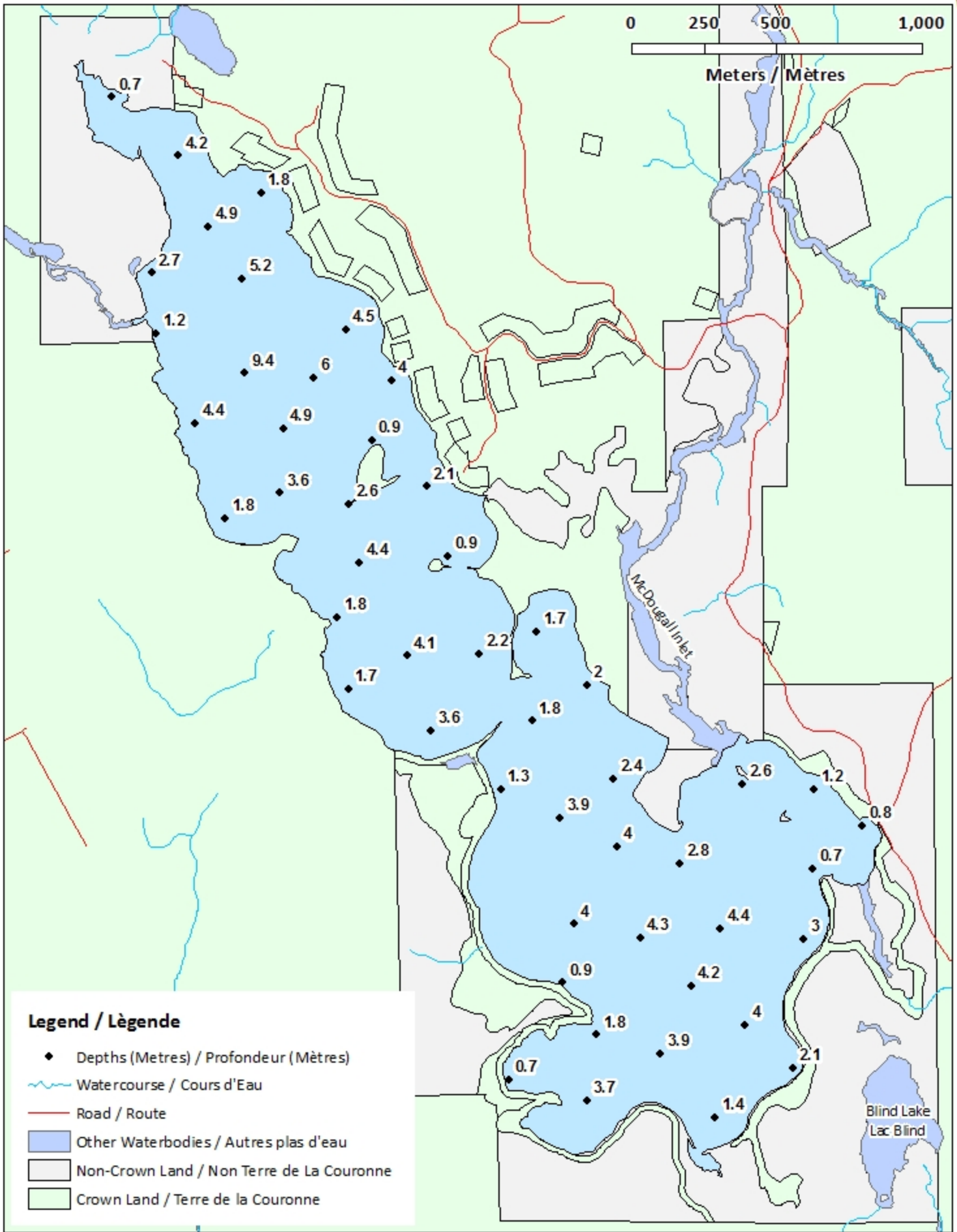
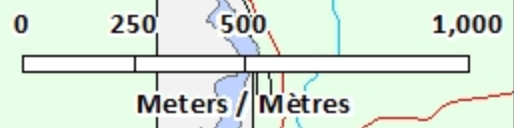
Profondeur de Lac (Mètres)

-  -1.56 - 0
-  -2.56 - -1.56
-  -3.57 - -2.56
-  -4.36 - -3.57
-  -5.31 - -4.36
-  -6.74 - -5.31
-  -8.69 - -6.74
-  -10.92 - -8.69
-  -13.08 - -10.92

Source: Esri, DigitalGlobe, GeoEye, Earthstar Geographics, CNES/Airbus DS, USDA, USGS, AeroGRID, IGN, and the GIS User Community

McDougall Lake / Lac McDougall

Depth Readings (Metres) / Indications de Profondeur (Mètres)

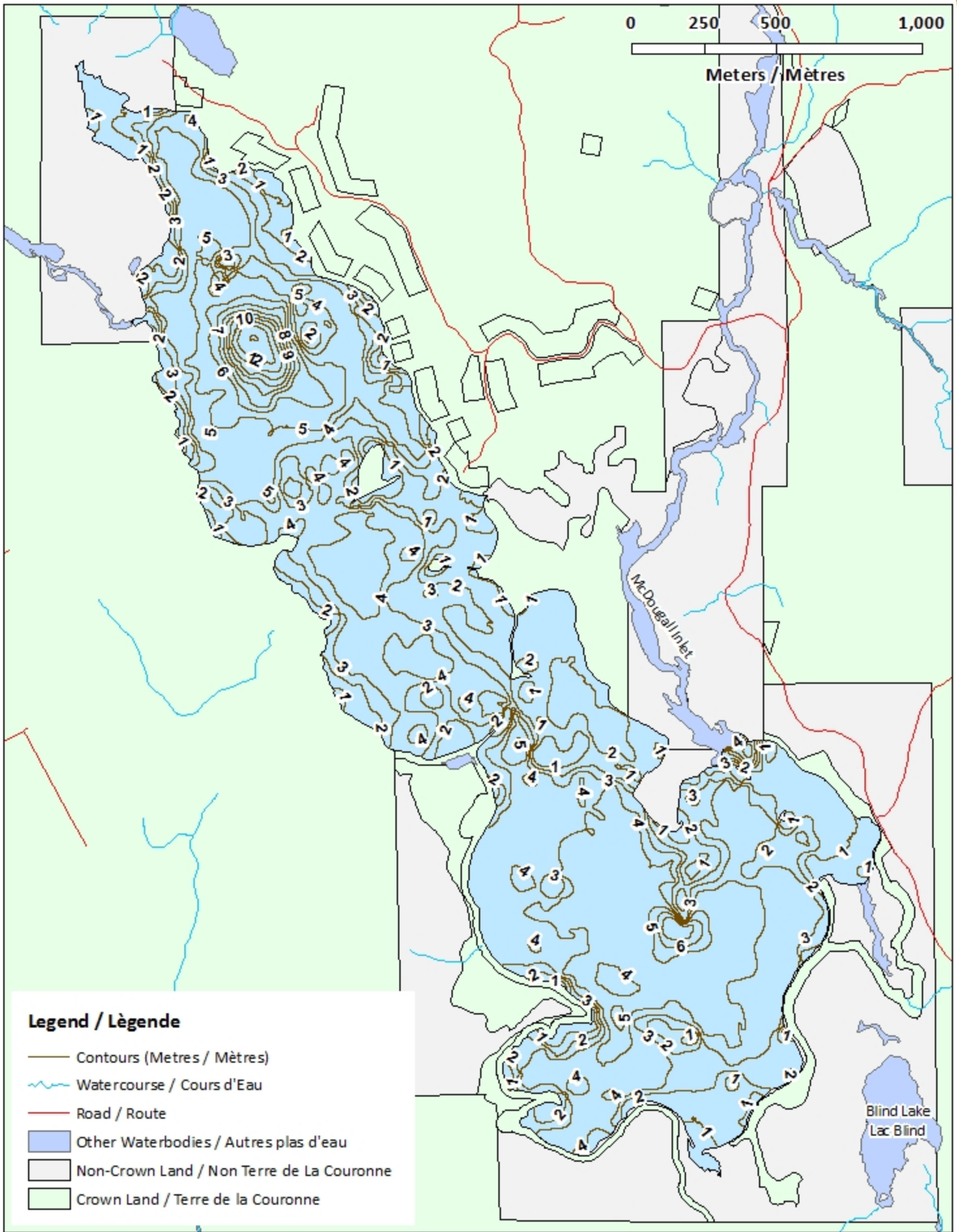
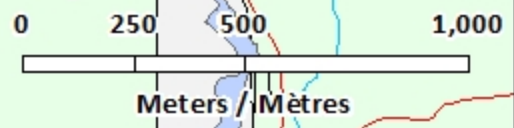


Legend / Légende

- ◆ Depths (Metres) / Profondeur (Mètres)
- ~ Watercourse / Cours d'Eau
- Road / Route
- Other Waterbodies / Autres plas d'eau
- Non-Crown Land / Non Terre de La Couronne
- Crown Land / Terre de la Couronne

McDougall Lake / Lac McDougall

Contours (Metres / Mètres)

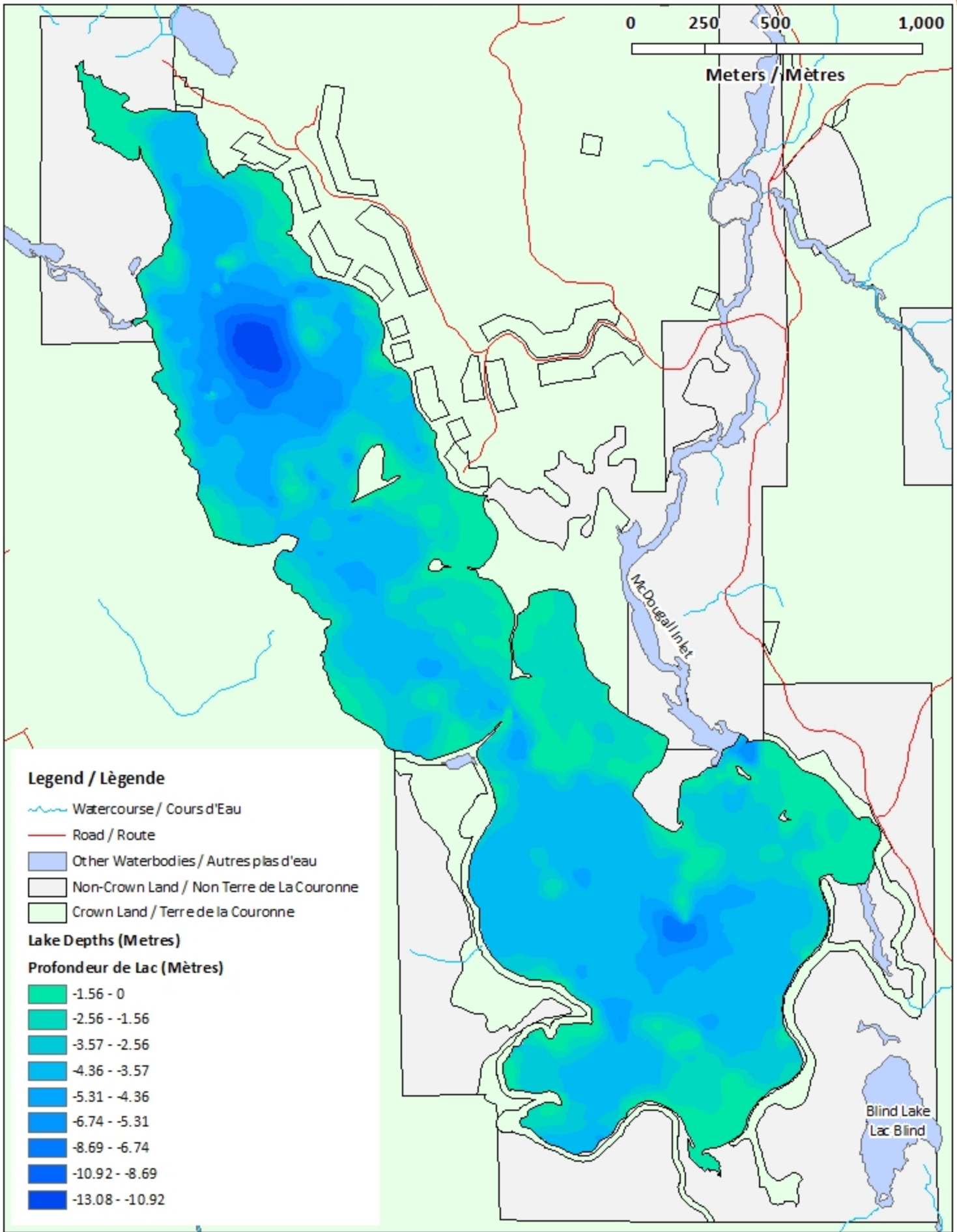
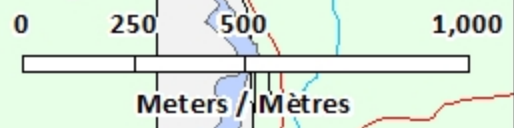


Legend / Légende

- Contours (Metres / Mètres)
- ~ Watercourse / Cours d'Eau
- Road / Route
- Other Waterbodies / Autres plas d'eau
- Non-Crown Land / Non Terre de La Couronne
- Crown Land / Terre de la Couronne

McDougall Lake / Lac McDougall

Depth (Metres) / Profondeur (Mètres)



Legend / Légende

- Watercourse / Cours d'Eau
- Road / Route
- Other Waterbodies / Autres plas d'eau
- Non-Crown Land / Non Terre de La Couronne
- Crown Land / Terre de la Couronne

Lake Depths (Metres)

Profondeur de Lac (Mètres)

- 1.56 - 0
- 2.56 - -1.56
- 3.57 - -2.56
- 4.36 - -3.57
- 5.31 - -4.36
- 6.74 - -5.31
- 8.69 - -6.74
- 10.92 - -8.69
- 13.08 - -10.92

Blind Lake
Lac Blind