

Lovalls Lake / Lac Lovalls

Gloucester County / Comté de Gloucester

*Chaleur Recreational Fishing Area /
Zone de Pêche Récréative de Baie des Chaleurs*

47°26'18.5"N 65°59'09.8"W

Lovalls Lake / Lac Lovalls

Note: *The following maps are not designed for navigation purposes. Please exercise caution when using these maps as some shoals may not appear.*

Remarque: *Les cartes suivantes ne sont pas conçues à des fins de navigation. Faites preuve de prudence lors de l'utilisation de ces cartes, car certains hauts-fonds peuvent ne pas apparaître.*

<u>Lake Characteristics</u>	<u>Caractéristiques du lac</u>
Surface Area : 23.1 hectares / 57.1 acres Maximum Depth : 1.2 metres / 4 feet	Superficie : 23.1 hectares / 57.1 acres Profondeur maximale : 1.2 mètres / 4 pieds

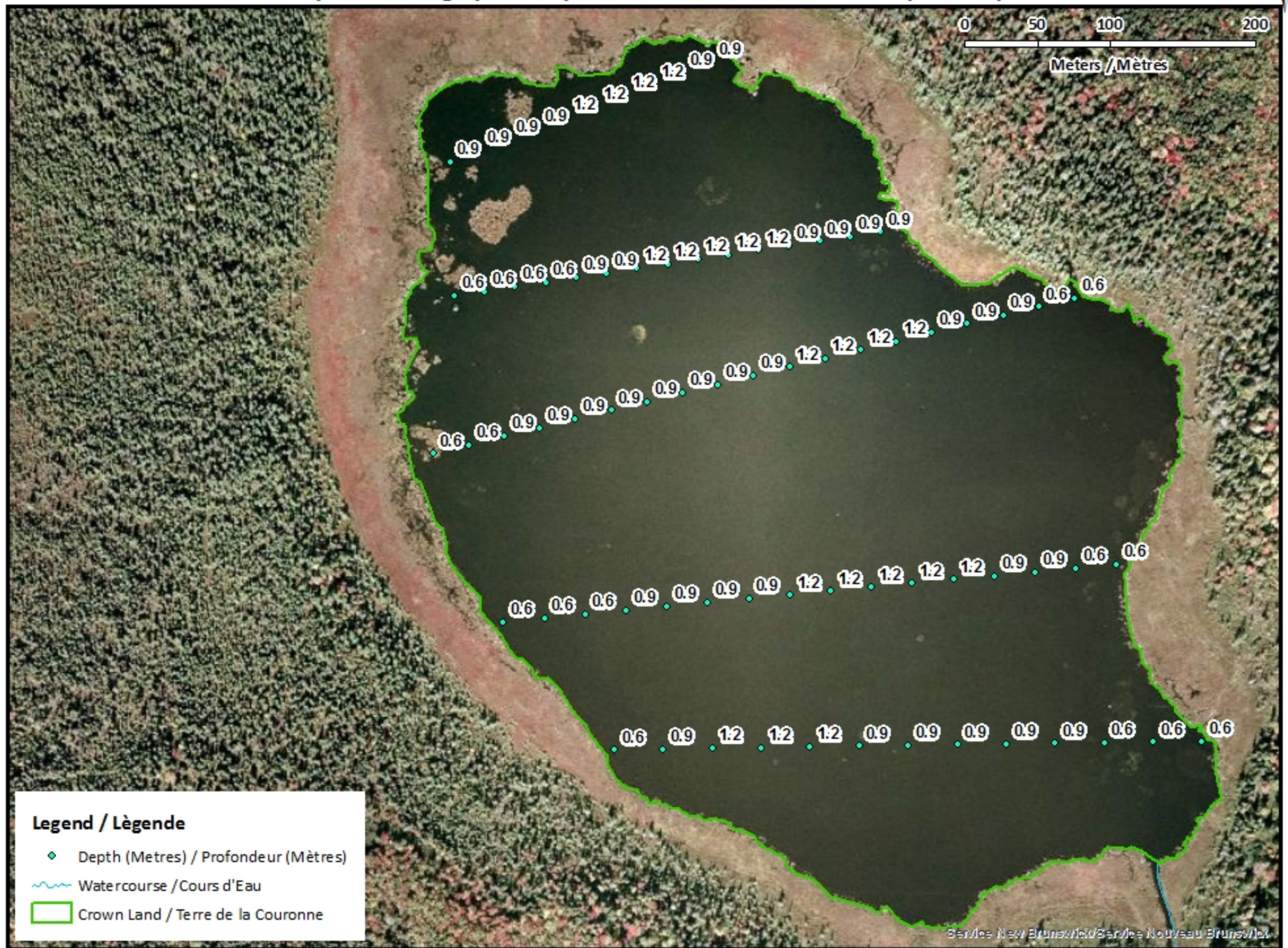
<u>Species Present</u>	<u>Espèce Présente</u>
Sport Fish Brook Trout Landlocked Salmon	Poisson sportif Truite mouchetée (Ombles de fontaine) Ouananiche
Non-Sport Fish Northern Redbelly Dace	Poisson non sportif Ventre rouge du nord

This lake is not part of the fish stocking program.

Ce lac ne fait pas partie du programme d'empoissonnement.

Lovalls Lake / Lac Lovalls

Depth Readings (Metres) / Indications de Profondeur (Mètres)

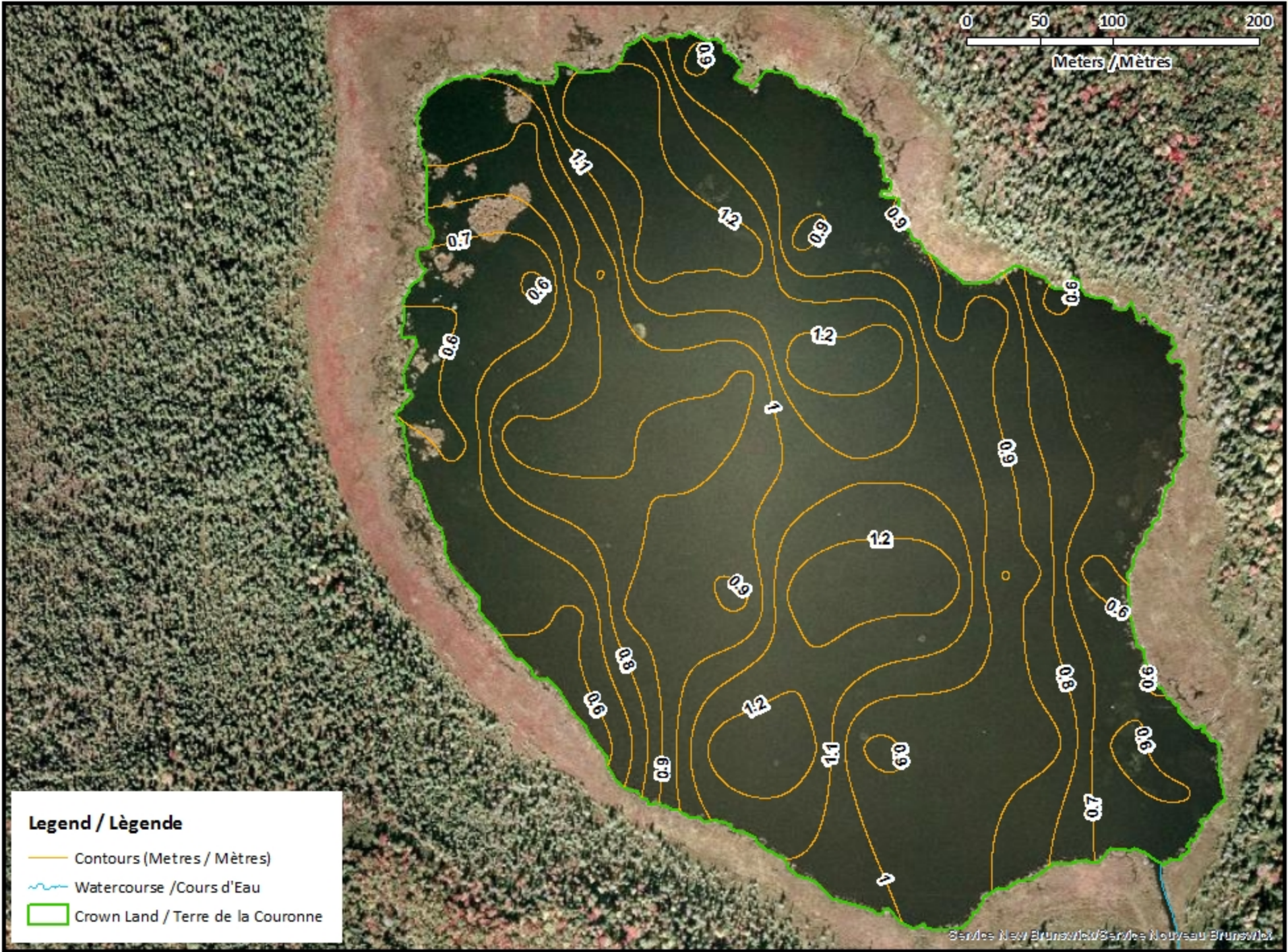


Legend / Légende

- ◆ Depth (Metres) / Profondeur (Mètres)
- ~ Watercourse / Cours d'Eau
- Crown Land / Terre de la Couronne

Lovalls Lake / Lac Lovalls

Contours (Metres / Mètres)



Legend / Légende



- Contours (Metres / Mètres)
- ~ Watercourse / Cours d'Eau
- Crown Land / Terre de la Couronne

Lovalls Lake / Lac Lovalls

Depth (Metres) / Profondeur (Mètres)












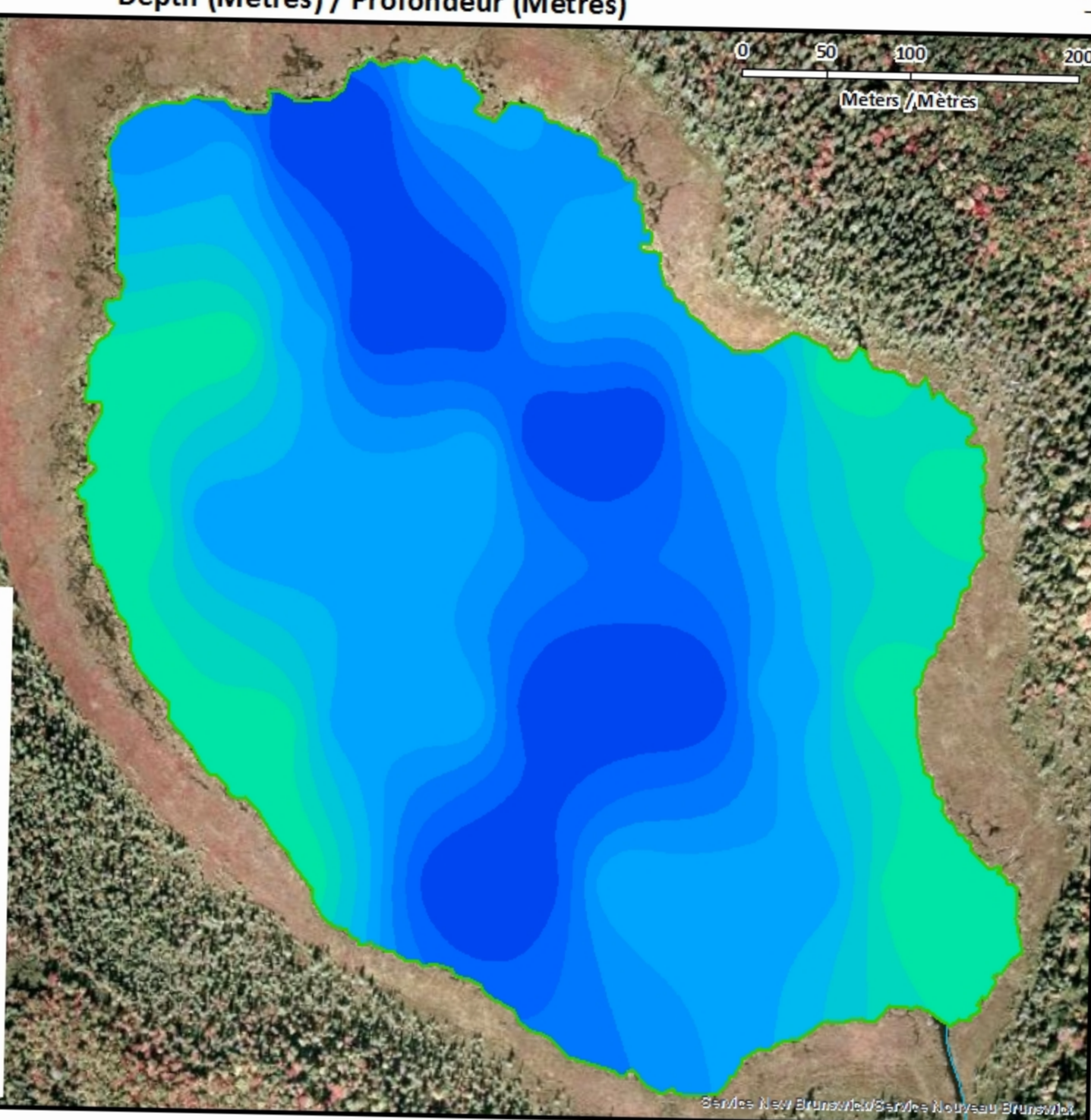
Legend / Légende

-  Watercourse / Cours d'Eau
-  Crown Land / Terre de la Couronne

Lake Depths (Metres)

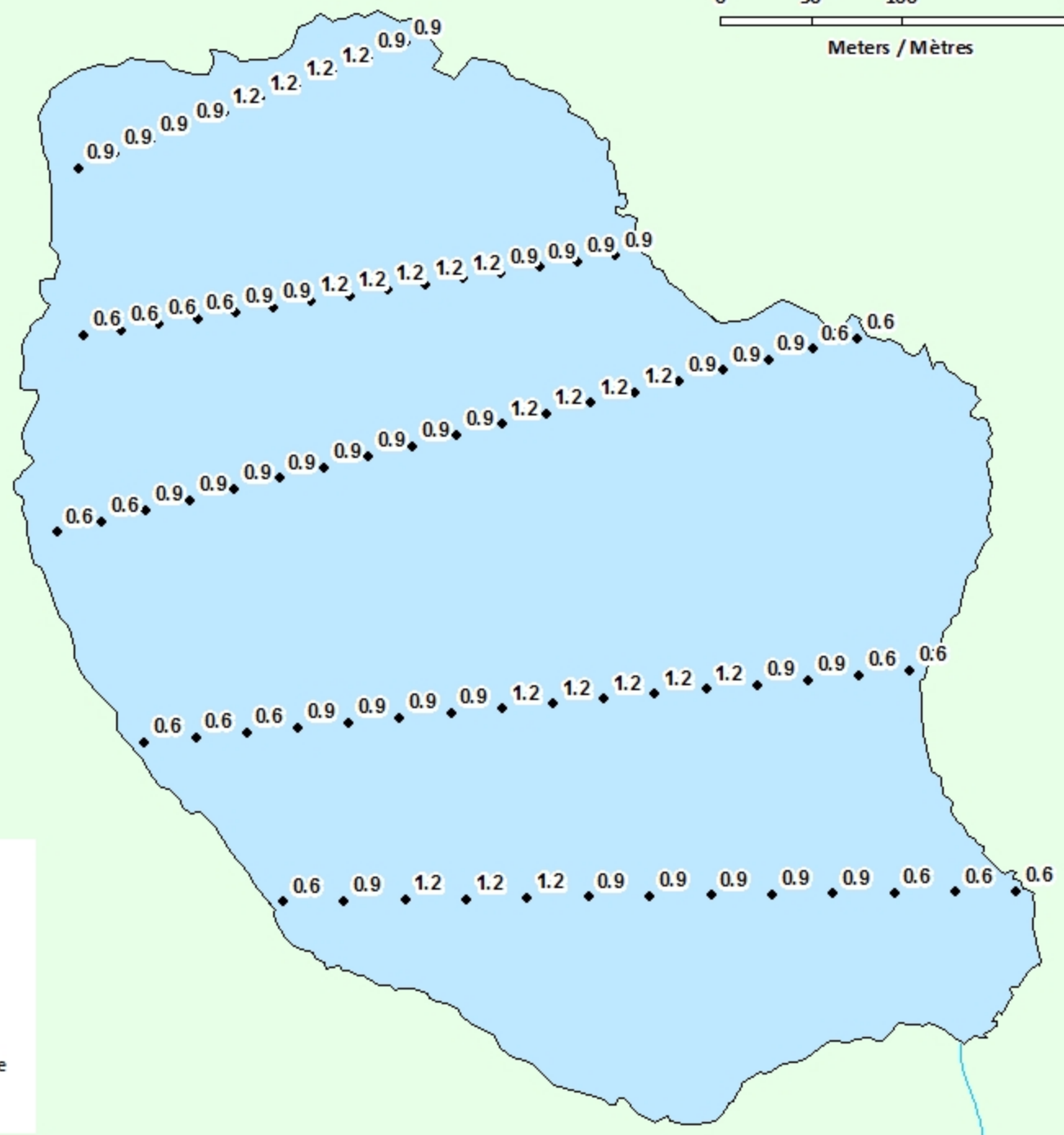
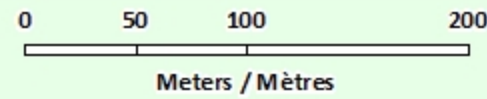
Profondeur de Lac (Mètres)

-  -0.64 - 0
-  -0.70 - -0.64
-  -0.79 - -0.70
-  -0.87 - -0.79
-  -0.94 - -0.87
-  -1.01 - -0.94
-  -1.09 - -1.01
-  -1.17 - -1.09
-  -1.25 - -1.17



Lovalls Lake / Lac Lovalls

Depth Readings (Metres) / Indications de Profondeur (Mètres)

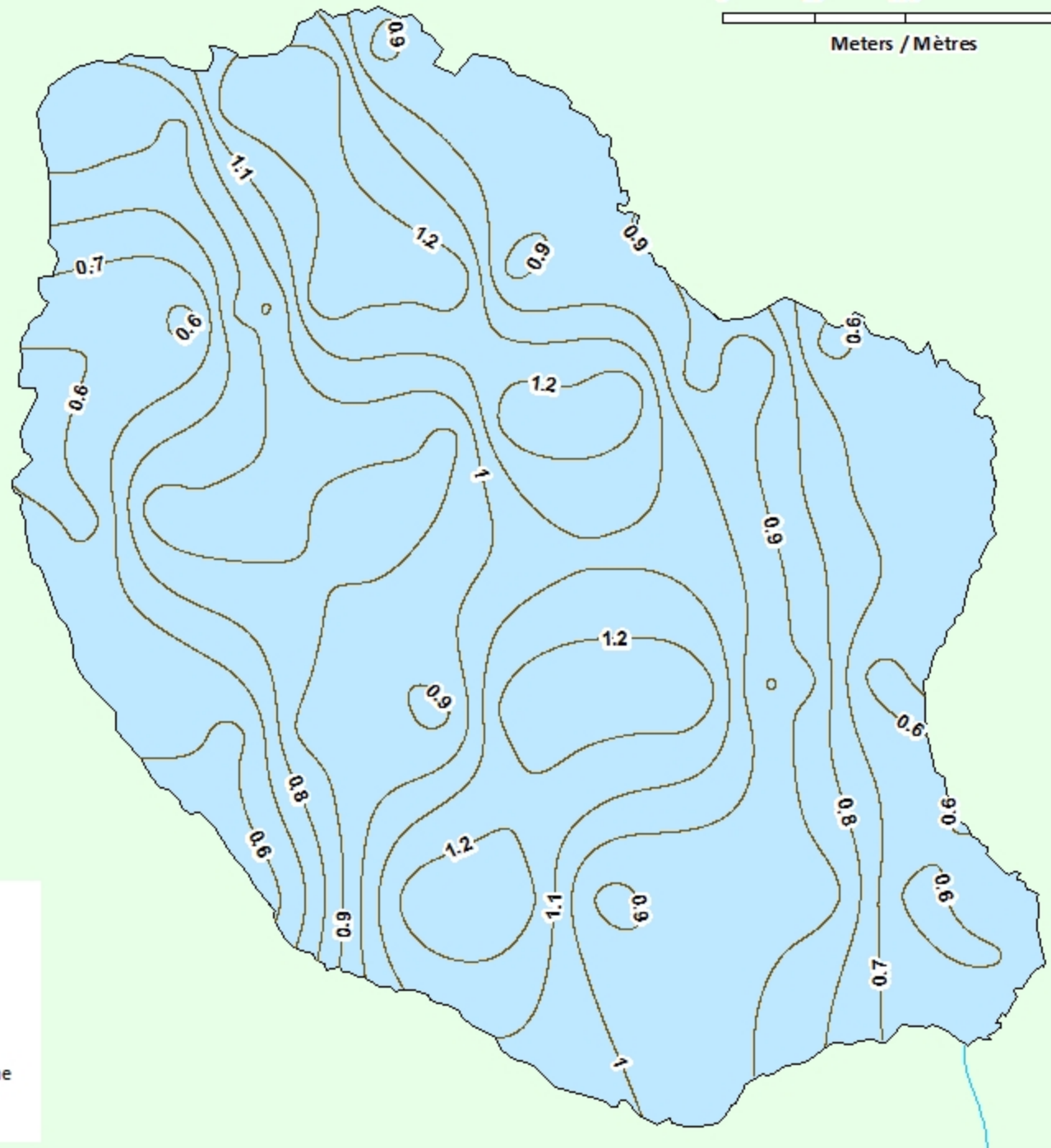
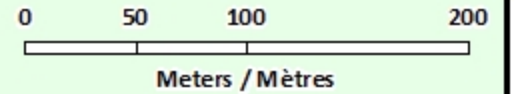


Legend / Légende

- ◆ Depth (Metres) / Profondeur (Mètres)
- ~ Watercourse / Cours d'Eau
- Road / Route
- Other Waterbodies / Autres plans d'eau
- Non-Crown Land / Non Terre de La Couronne
- Crown Land / Terre de la Couronne

Lovalls Lake / Lac Lovalls

Contours (Metres / Mètres)

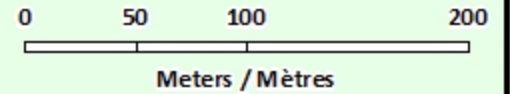


Legend / Légende


- Contours (Metres / Mètres)
- ~ Watercourse / Cours d'Eau
- Road / Route
- Non-Crown Land / Non Terre de La Couronne
- Crown Land / Terre de la Couronne


Lovalls Lake / Lac Lovalls


Depth (Metres) / Profondeur (Mètres)

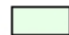


Legend / Légende

 Watercourse / Cours d'Eau

 Road / Route

 Non-Crown Land / Non Terre de La Couronne

 Crown Land / Terre de la Couronne

Lake Depths (Metres)

Profondeur de Lac (Mètres)

