

## **Hartts Lake / Lac Hartts**

*Northumberland County / Comté de Northumberland*

*Chaleur Recreational Fishing Area /  
Zone de Pêche Récréative de Baie des Chaleurs*

*47°24'24.1"N 66°18'38.0"W*

## Hartts Lake / Lac Hartts

**Note:** *The following maps are not designed for navigation purposes. Please exercise caution when using these maps as some shoals may not appear.*

**Remarque:** *Les cartes suivantes ne sont pas conçues à des fins de navigation. Faites preuve de prudence lors de l'utilisation de ces cartes, car certains hauts-fonds peuvent ne pas apparaître.*

<u>Lake Characteristics</u>	<u>Caractéristiques du lac</u>
Surface Area : 12.0 hectares / 29.7 acres Maximum Depth : 15.2 metres / 50 feet	Superficie : 12.0 hectares / 29.7 acres Profondeur maximale : 15.2 mètres / 50 pieds

<u>Species Present</u>	<u>Espèce Présente</u>
<b>Sport Fish</b> Brook Trout	<b>Poisson sportif</b> Truite mouchetée (Omble de fontaine)
<b>Non-Sport Fish</b> Rainbow Smelt	<b>Poisson non sportif</b> Éperlan arc-en-ciel

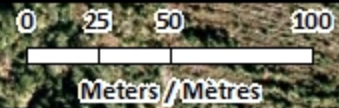
This lake is not part of the fish stocking program.

Ce lac ne fait pas partie du programme d'empoissonnement.



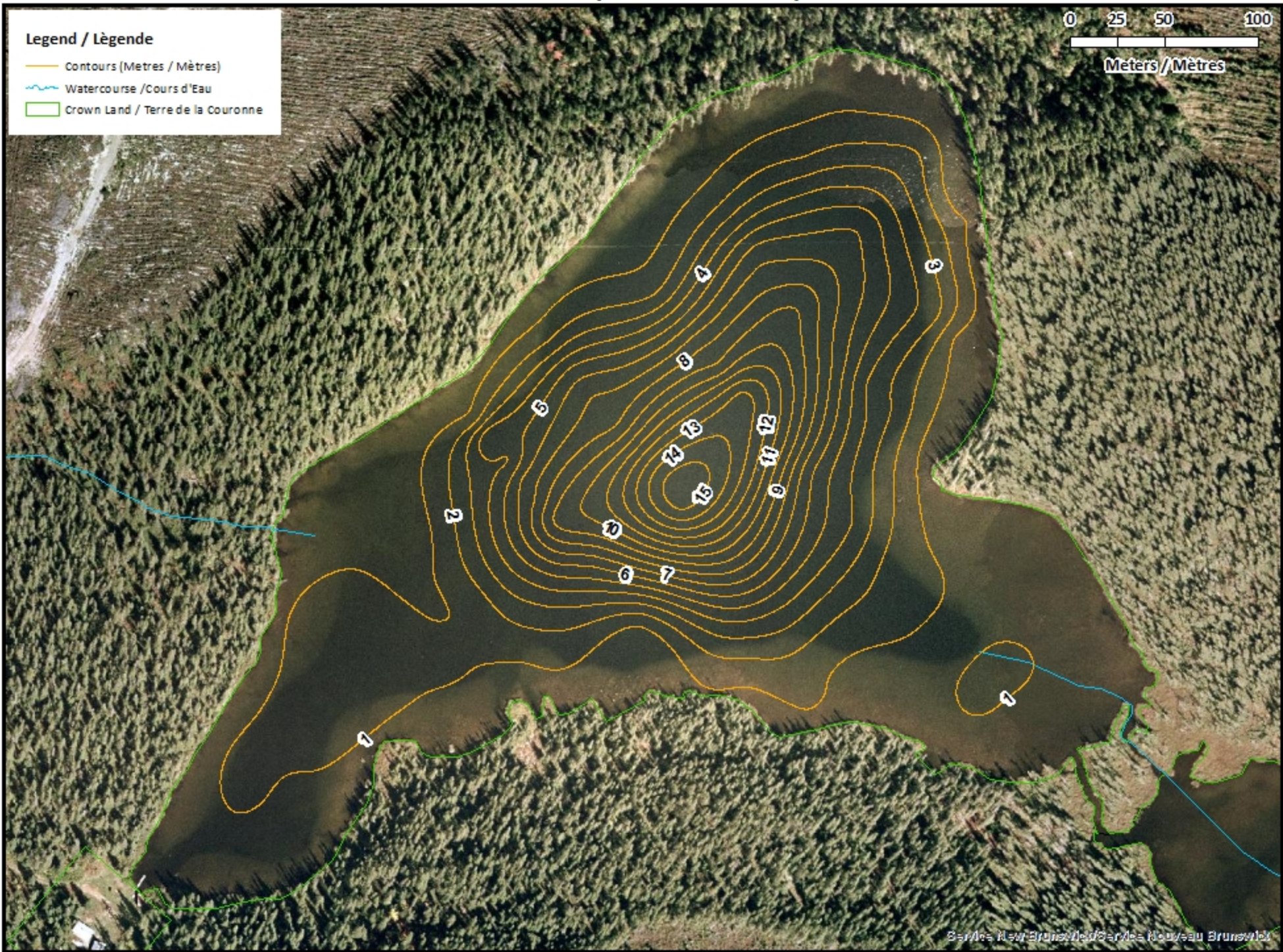
# Hartts Lake / Lac Hartts

## Contours (Metres / Mètres)



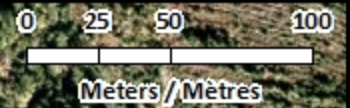
**Legend / Légende**

- Contours (Metres / Mètres)
- Watercourse / Cours d'Eau
- Crown Land / Terre de la Couronne



# Hartts Lake / Lac Hartts

## Depth (Metres) / Profondeur (Mètres)



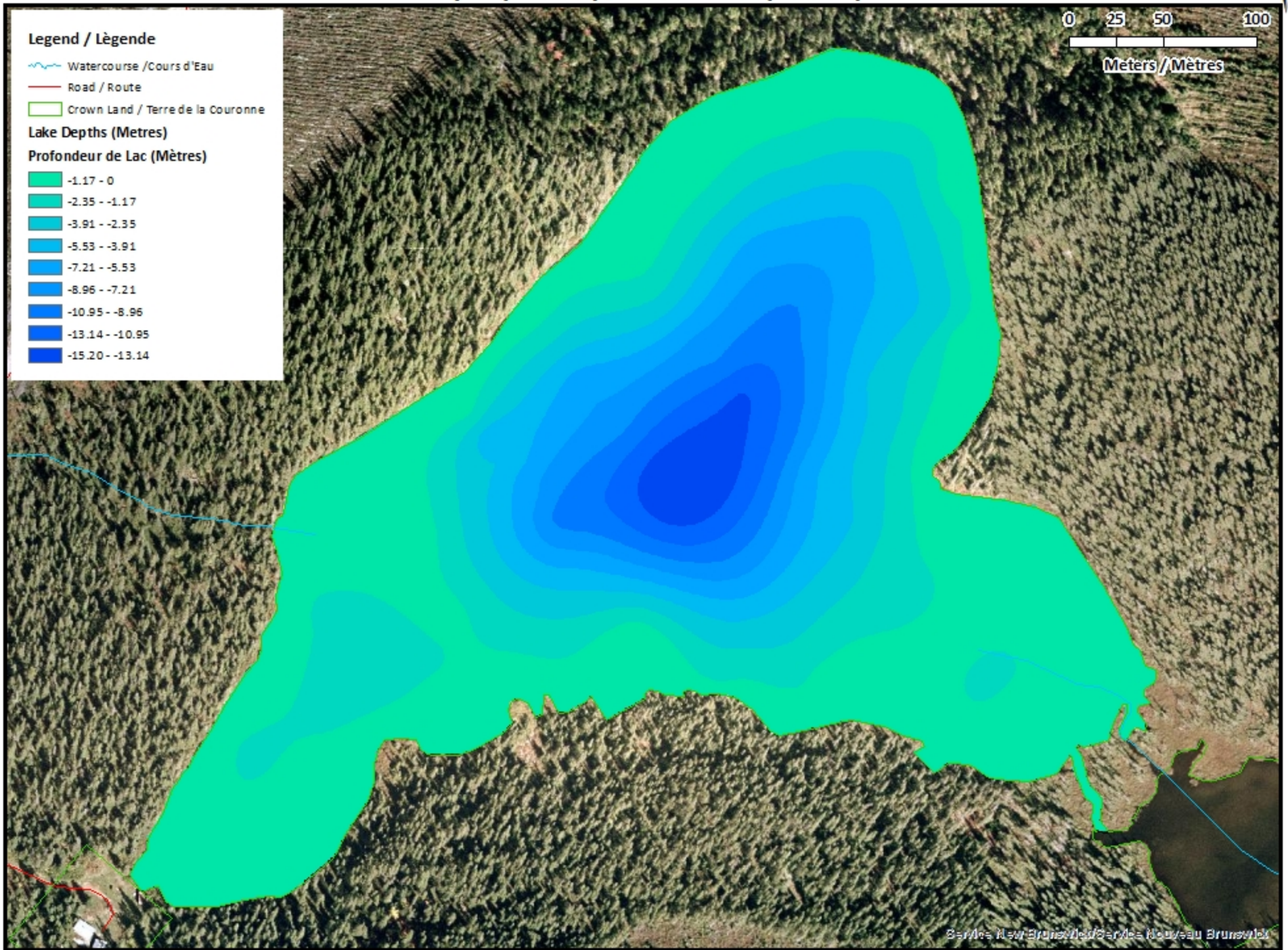
### Legend / Légende

- Watercourse / Cours d'Eau
- Road / Route
- Crown Land / Terre de la Couronne

### Lake Depths (Metres)

#### Profondeur de Lac (Mètres)

- 1.17 - 0
- 2.35 - -1.17
- 3.91 - -2.35
- 5.53 - -3.91
- 7.21 - -5.53
- 8.96 - -7.21
- 10.95 - -8.96
- 13.14 - -10.95
- 15.20 - -13.14



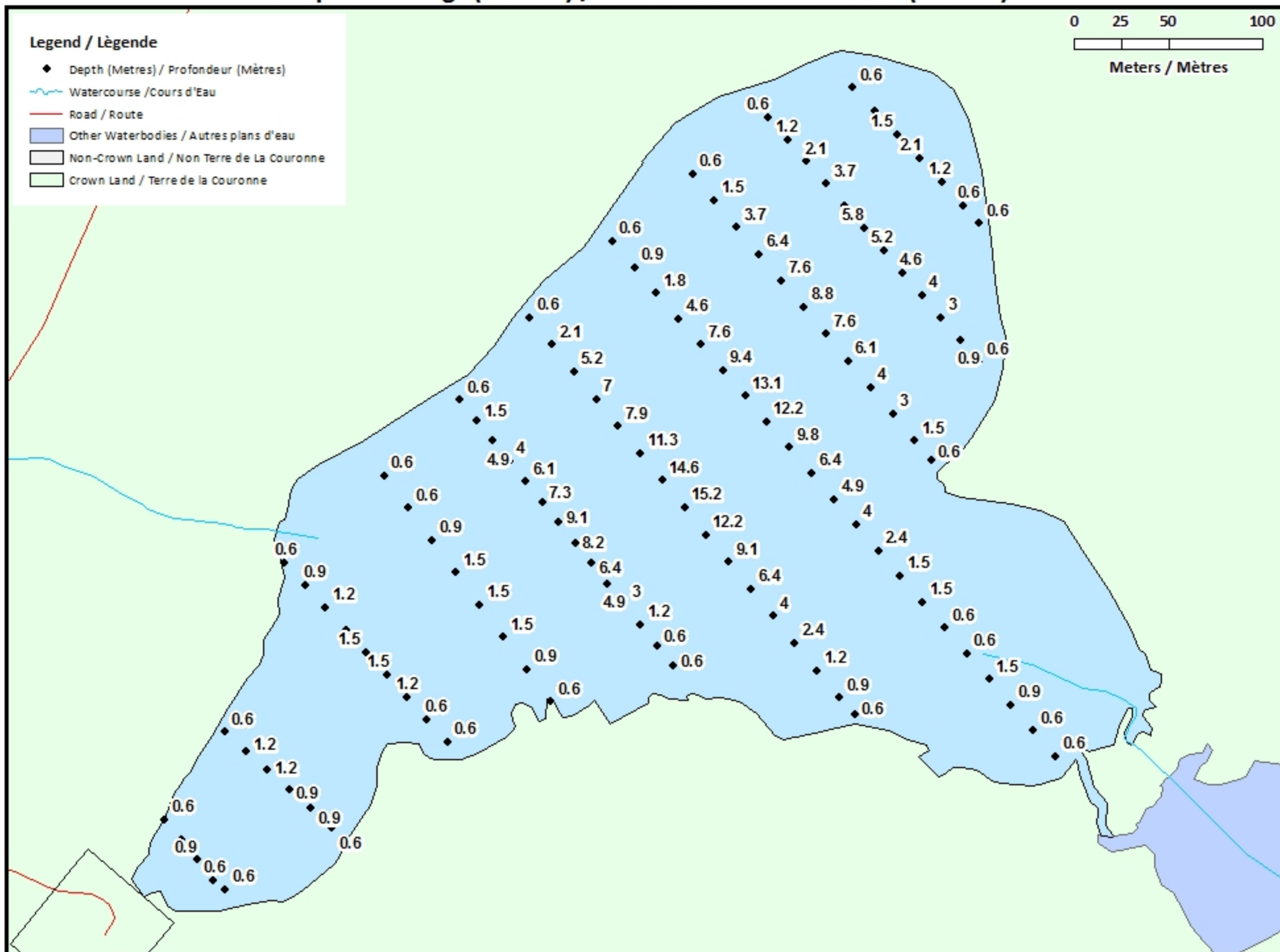
# Hartts Lake / Lac Hartts

## Depth Readings (Metres) / Indications de Profondeur (Mètres)



### Legend / Légende

- ◆ Depth (Metres) / Profondeur (Mètres)
- ~ Watercourse / Cours d'Eau
- Road / Route
- Other Waterbodies / Autres plans d'eau
- Non-Crown Land / Non Terre de La Couronne
- Crown Land / Terre de la Couronne



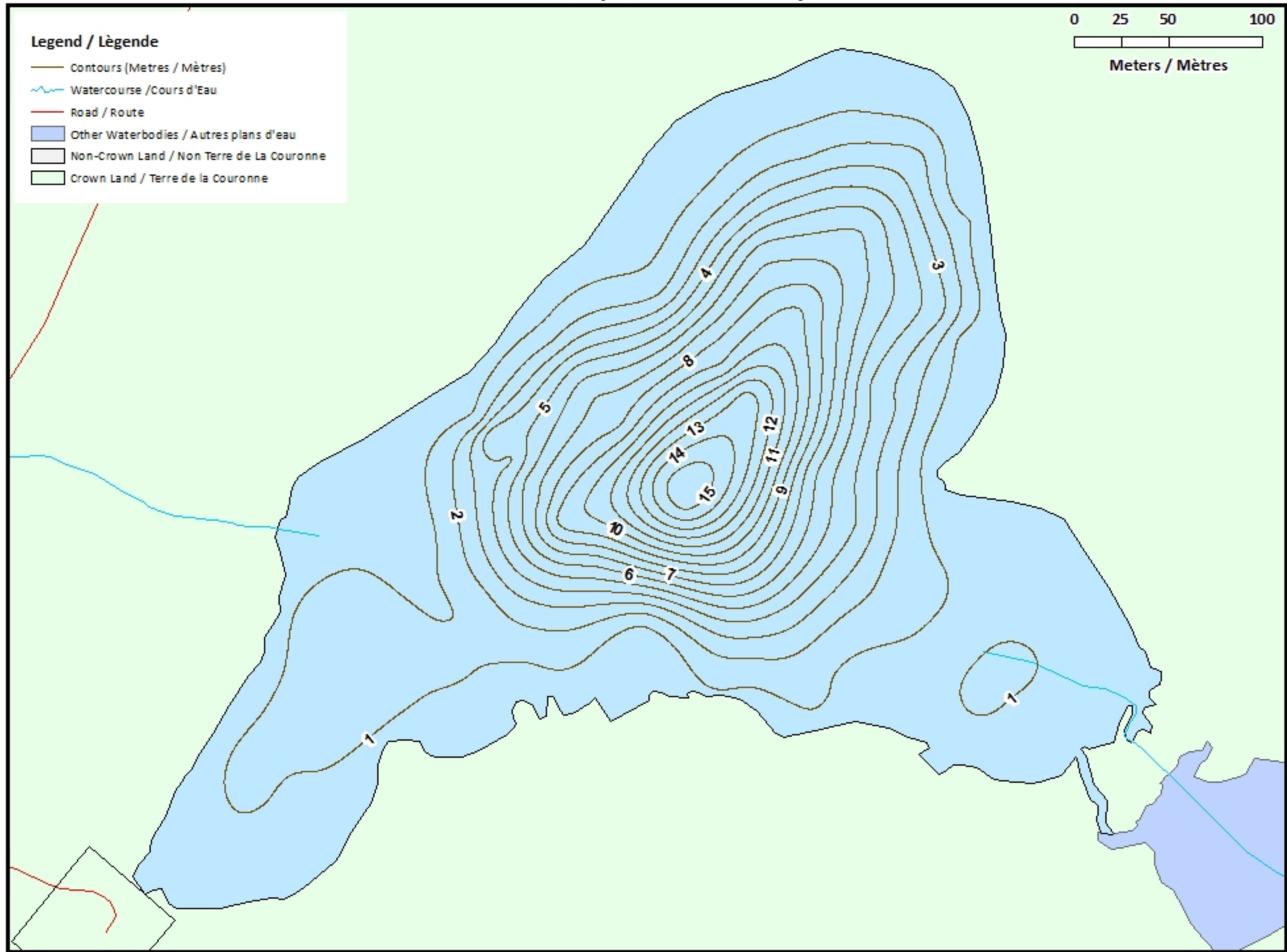
# Hartts Lake / Lac Hartts

## Contours (Metres / Mètres)



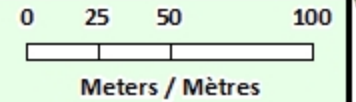
### Legend / Légende

- Contours (Metres / Mètres)
- Watercourse / Cours d'Eau
- Road / Route
- Other Waterbodies / Autres plans d'eau
- Non-Crown Land / Non Terre de La Couronne
- Crown Land / Terre de la Couronne




# Hartts Lake / Lac Hartts

## Depth (Metres) / Profondeur (Mètres)




### Legend / Légende


 Watercourse / Cours d'Eau


 Road / Route


### Lake Depths (Metres)


#### Profondeur de Lac (Mètres)


 -1.17 - 0


 -2.35 - -1.17


 -3.91 - -2.35


 -5.53 - -3.91


 -7.21 - -5.53


 -8.96 - -7.21


 -10.95 - -8.96

 -13.14 - -10.95

 -15.20 - -13.14

 Other Waterbodies / Autres plans d'eau

 Non-Crown Land / Non Terre de La Couronne

 Crown Land / Terre de la Couronne

