

French Lake / Lac French

Sunbury County / Comté de Sunbury

*Lower Saint John Recreational Fishing Area /
Zone de Pêche Récréative de Bas Saint-Jean*

45°54'51.7"N 66°16'30.5"W

French Lake / Lac French

Note: *The following maps are not designed for navigation purposes. Please exercise caution when using these maps as some shoals may not appear.*

Remarque: *Les cartes suivantes ne sont pas conçues à des fins de navigation. Faites preuve de prudence lors de l'utilisation de ces cartes, car certains hauts-fonds peuvent ne pas apparaître.*

<u>Lake Characteristics</u>	<u>Caractéristiques du lac</u>
Surface Area : 596.5 hectares / 1473.9 acres Maximum Depth : 6.7 metres / 22 feet	Superficie : 596.5 hectares / 1473.9 acres Profondeur maximale : 6.7 mètres / 22 pieds

<u>Species Present</u>	<u>Espèce Présente</u>
Sport Fish Atlantic Salmon	Poisson sportif Saumon atlantique
Non-Sport Fish Alewife Brown Bullhead Chain Pickerel Common Shiner Pumpkinseed White Perch White Sucker Yellow Perch	Poisson non sportif Gaspereau Barbotte brune Brochet maillé Méné à nageoires rouges Crapet-soleil Baret Meunier noir Perchaude

This lake is not part of the fish stocking program.

Ce lac ne fait pas partie du programme d'empoissonnement.

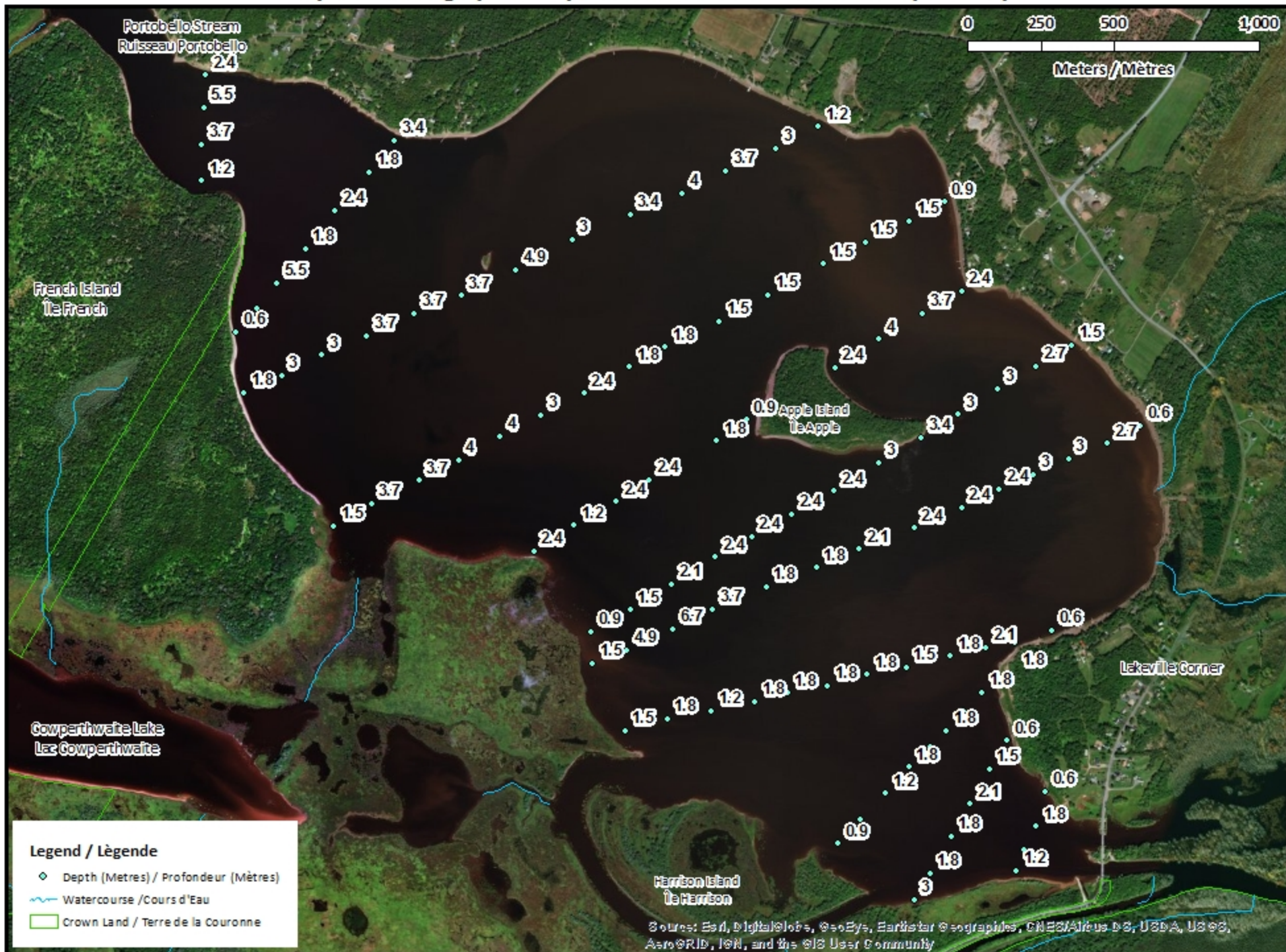
French Lake / Lac French

Depth Readings (Metres) / Indications de Profondeur (Mètres)



0 250 500 1,000

Meters / Mètres



- Legend / Légende**
- ◆ Depth (Metres) / Profondeur (Mètres)
 - Watercourse / Cours d'Eau
 - Crown Land / Terre de la Couronne

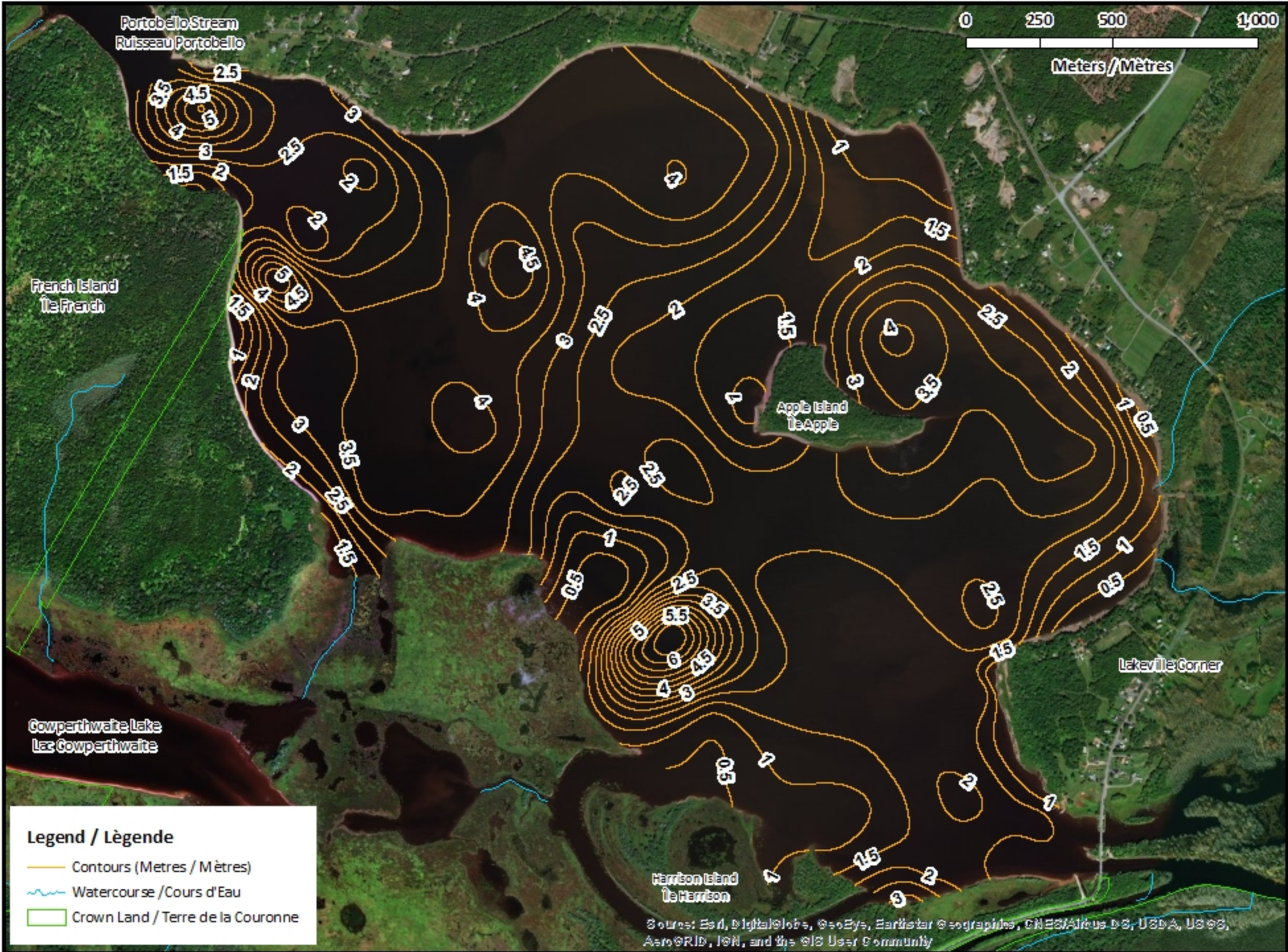
Source: Esri, DigitalGlobe, GeoEye, Earthstar Geographics, CNES/Airbus DS, USDA, USGS, AeroGRID, IGN, and the GIS User Community

French Lake / Lac French Contours (Metres / Mètres)



0 250 500 1,000

Meters / Mètres



Legend / Légende

- Contours (Metres / Mètres)
- ~ Watercourse / Cours d'Eau
- Crown Land / Terre de la Couronne

Source: Esri, DigitalGlobe, GeoEye, Earthstar Geographics, CNES/Airbus DS, USDA, USGS, AeroGRID, IGN, and the GIS User Community

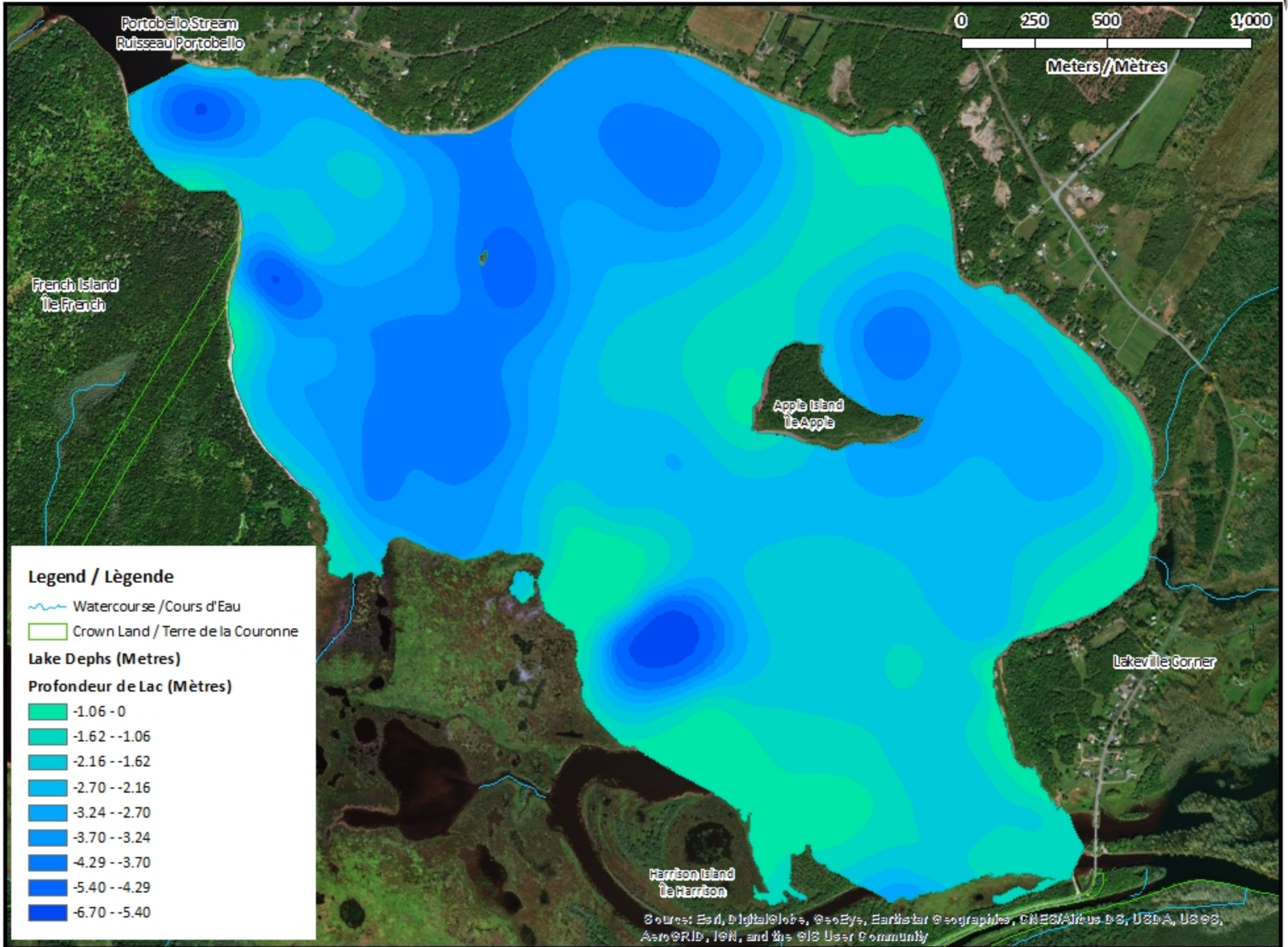
French Lake / Lac French

Depth (Metres) / Profondeur (Mètres)





0 250 500 1,000

Meters / Mètres












Legend / Légende

-  Watercourse / Cours d'Eau
-  Crown Land / Terre de la Couronne

Lake Depths (Metres)

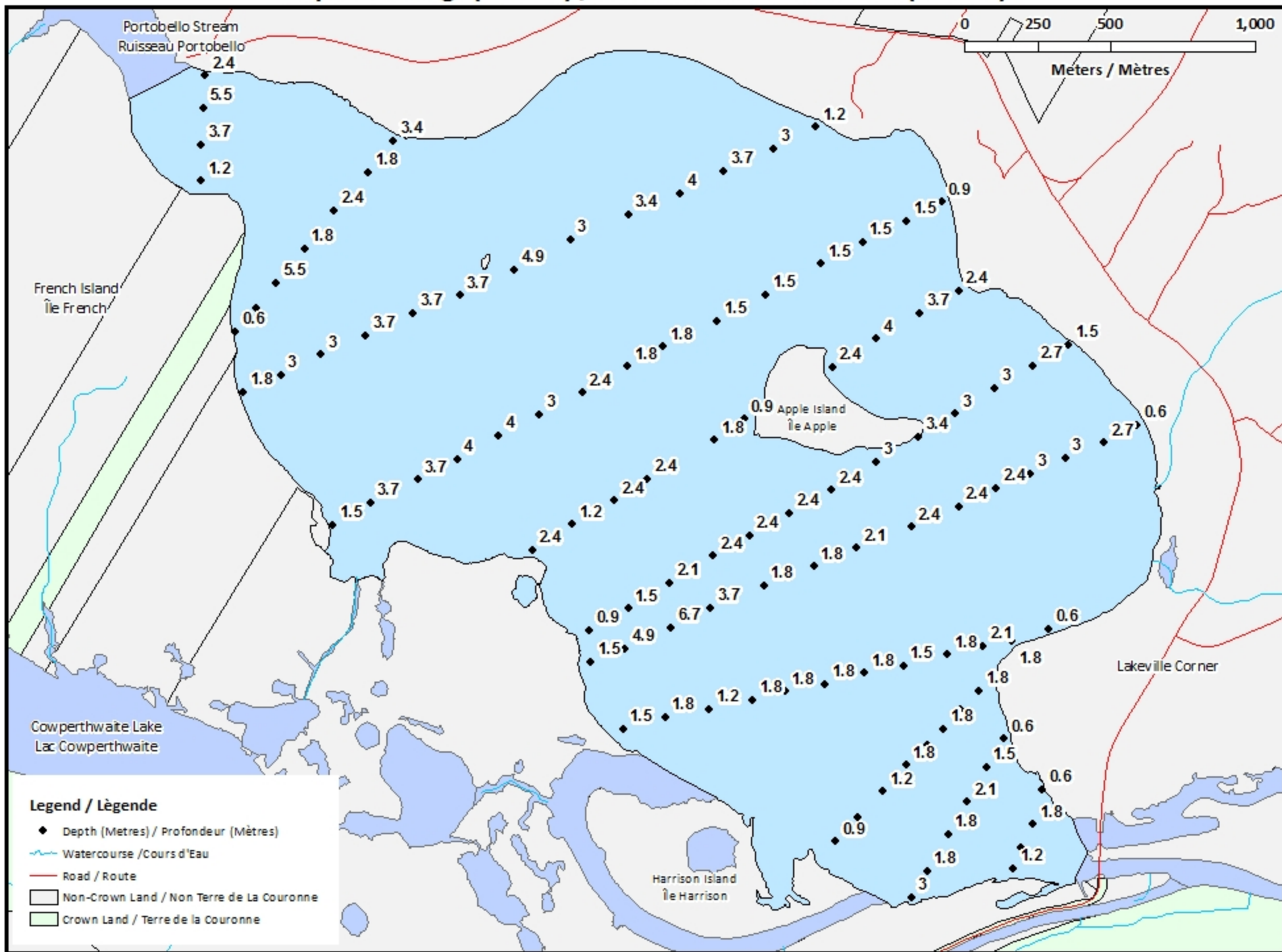
Profondeur de Lac (Mètres)

-  -1.06 - 0
-  -1.62 -- -1.06
-  -2.16 -- -1.62
-  -2.70 -- -2.16
-  -3.24 -- -2.70
-  -3.70 -- -3.24
-  -4.29 -- -3.70
-  -5.40 -- -4.29
-  -6.70 -- -5.40

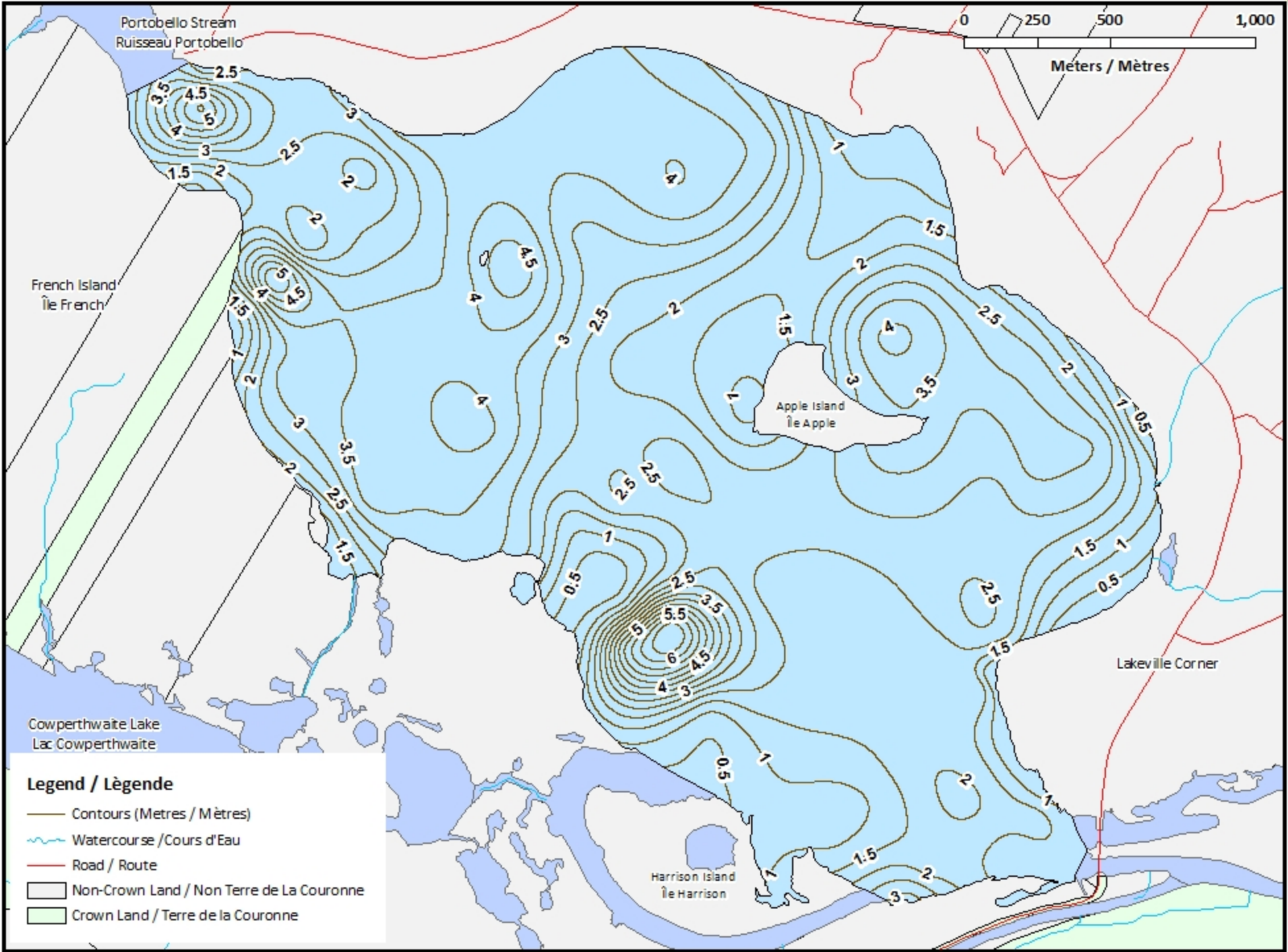
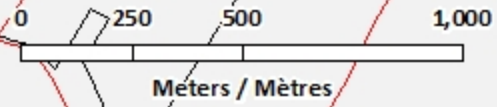
Source: Esri, DigitalGlobe, GeoEye, Earthstar Geographics, CNES/Airbus DS, USDA, USGS, AeroGRID, IGN, and the GIS User Community

French Lake / Lac French

Depth Readings (Metres) / Indications de Profondeur (Mètres)



French Lake / Lac French Contours (Metres / Mètres)



French Lake / Lac French

Depth (Metres) / Profondeur (Mètres)

