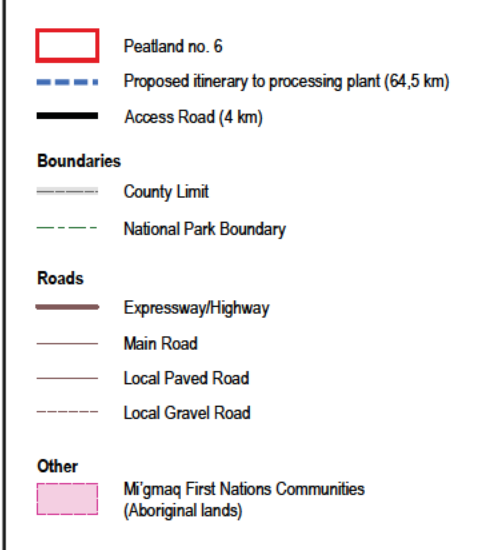
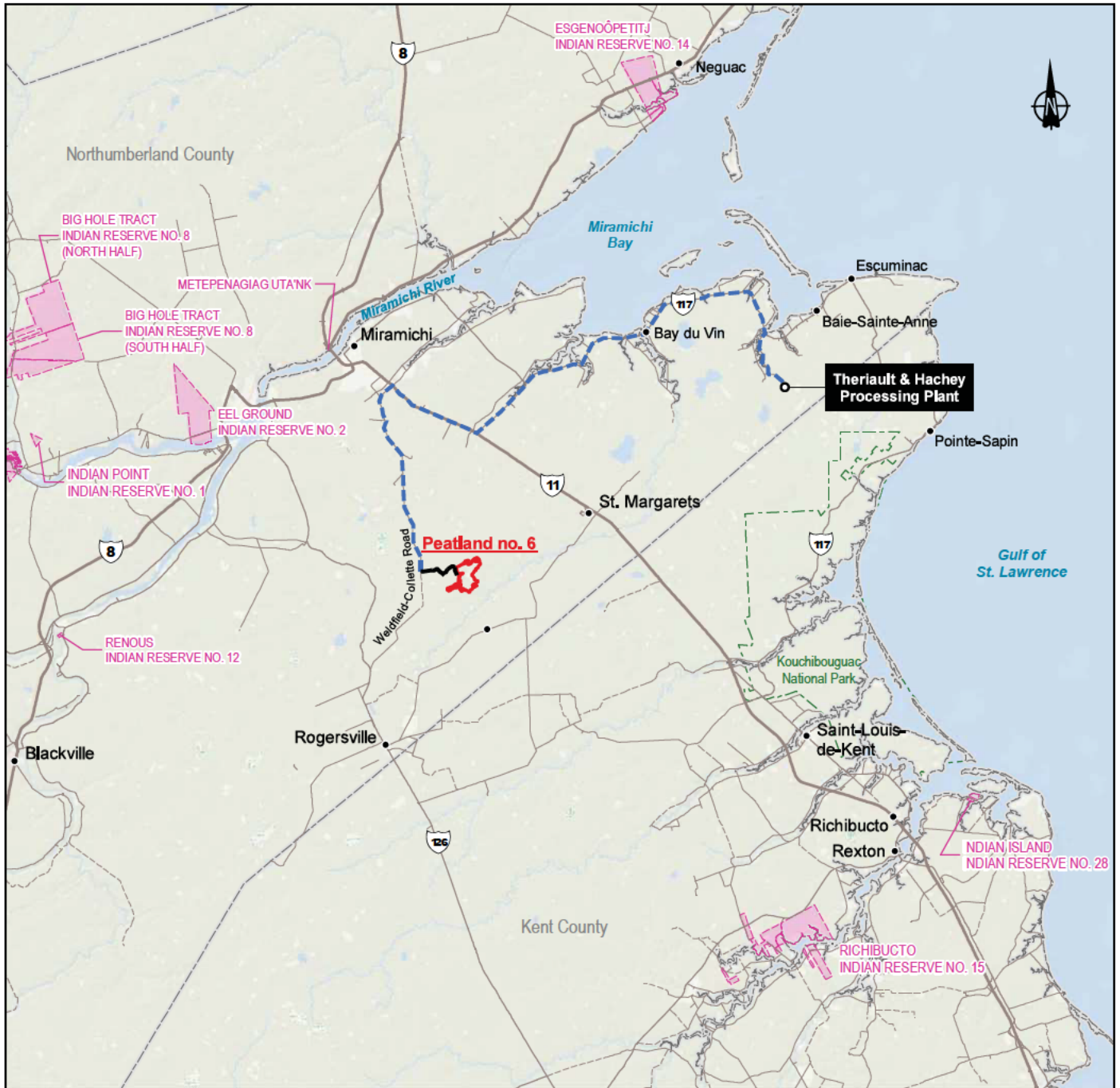



**MAPS**







**THERIAULT  
HACHEY**  
PEAT MOSS LTD.

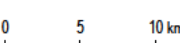
*Theriault & Hachey Peat Moss Ltd. Peatland No. 6 Project*

---

**Map 1  
Project Location**

---

**Sources:**  
GeoNB (SNB)  
10m, North America Atlas  
World Ocean Base




N-B Stereographic, NAD83, CSRS

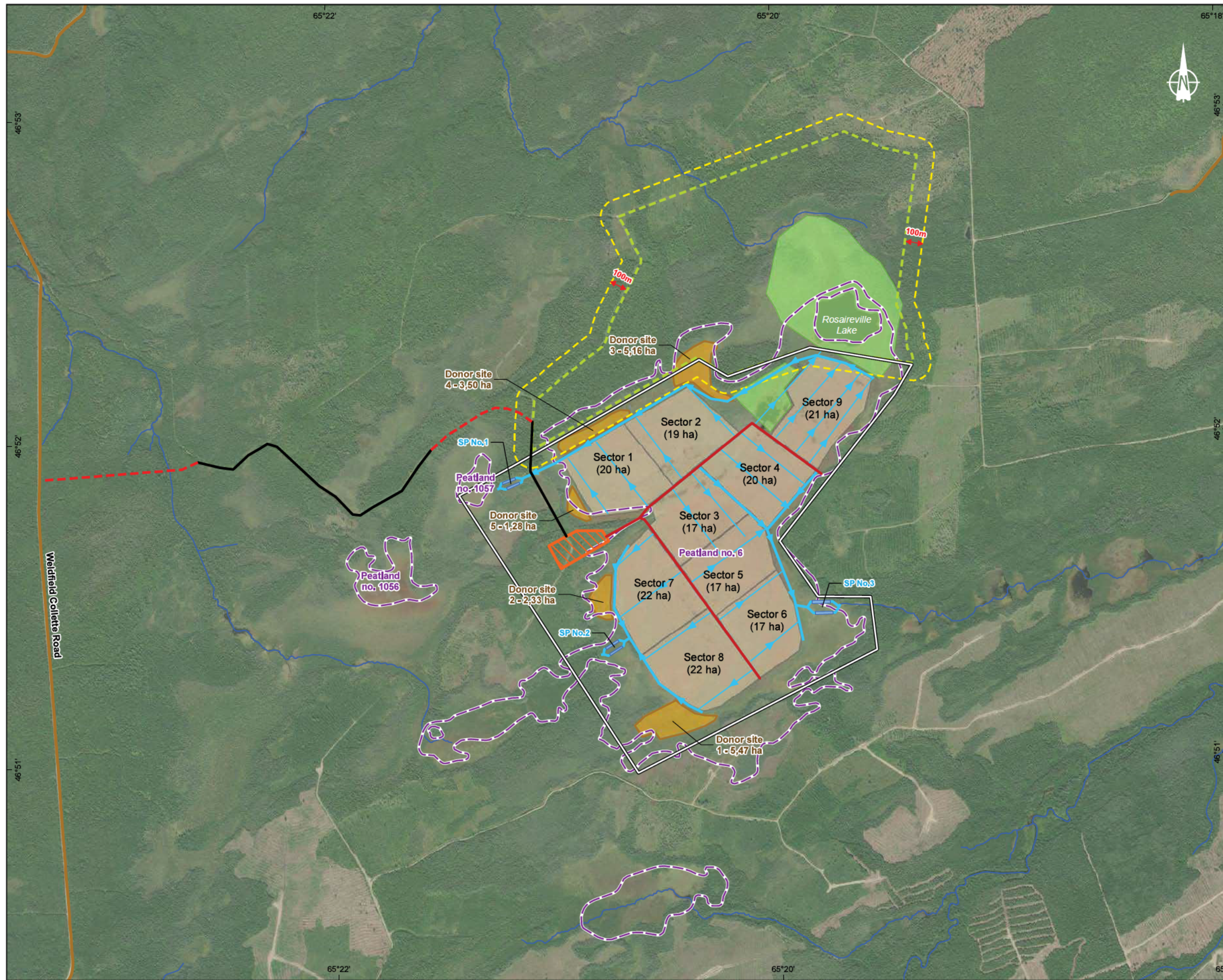
**January 2022**

---

Designed by: F. Quirly  
Drawn by: J.-M. Tremblay  
Checked by: F. Quirly  
211\_06686\_00\_EL\_c1\_Joc\_wspq\_220124.mxd







- Project Layout**
- Lease Limit
  - Harvest Field
  - Service Area (4 ha)
  - Sedimentation Pond (SP)
  - Donor Site
  - Conservation Area (Therault & Hachey)
  - Proposed Candidate Conservation Area (ID 0683) with 100 meter Buffer

- Road**
- Access Road To Be Constructed
  - Bog Road
  - Existing Access Road
  - Public Road

- Drainage**
- Main Ditch
  - Secondary Ditch

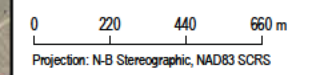
- Basemap**
- River
  - Peatland Boundary



Therault & Hachey Peat Moss Ltd. Peatland No. 6 Project

**Map 2  
Development Plan**

Sources:  
Basemap: SNB GeoNB, Data Extraction on December 7, 2020 ;  
World Imagery, Maxar 2018

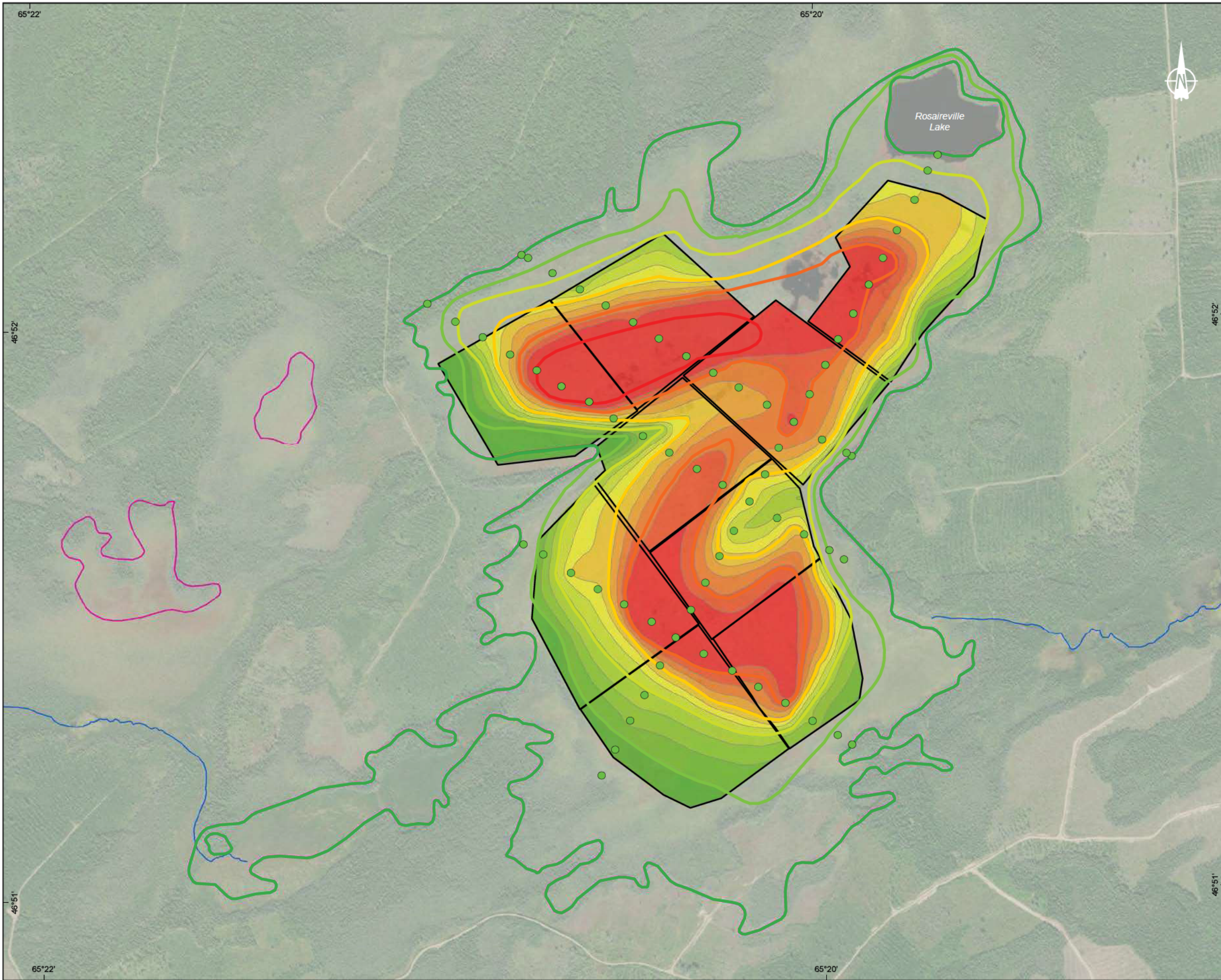


January 2022

Designed by: F. Quinty  
Drawn by: J.-M. Tremblay  
Checked by: F. Quinty  
211\_06686\_00\_EI\_c2\_devplan\_wspq\_220127.mxd







**Project Layout**

- Harvest Field
- Sampling Point (Keys & Henderson, 1987)

**Harvestable Area (Years)**

- 2023
- 2028
- 2033
- 2038
- 2043
- 2048
- 2053
- 2058
- 2063
- 2068
- 2072

**Isopack Depth (m)**

- 0
- 0 - 1
- 1 - 2
- 2 - 3
- 3 - 4
- 4 - 5

**Basemap**

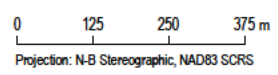
- River
- Peatland Boundary



*Theriault & Hachey Peat Moss Ltd. Peatland No. 6 Project*

**Map 3  
Peath Depth Projection**

Sources:  
Basemap: SNB GeoNB, Data Extraction on December 7, 2020;  
World Imagery, Maxar 2018



Projection: N-B Stereographic, NAD83 SCRS

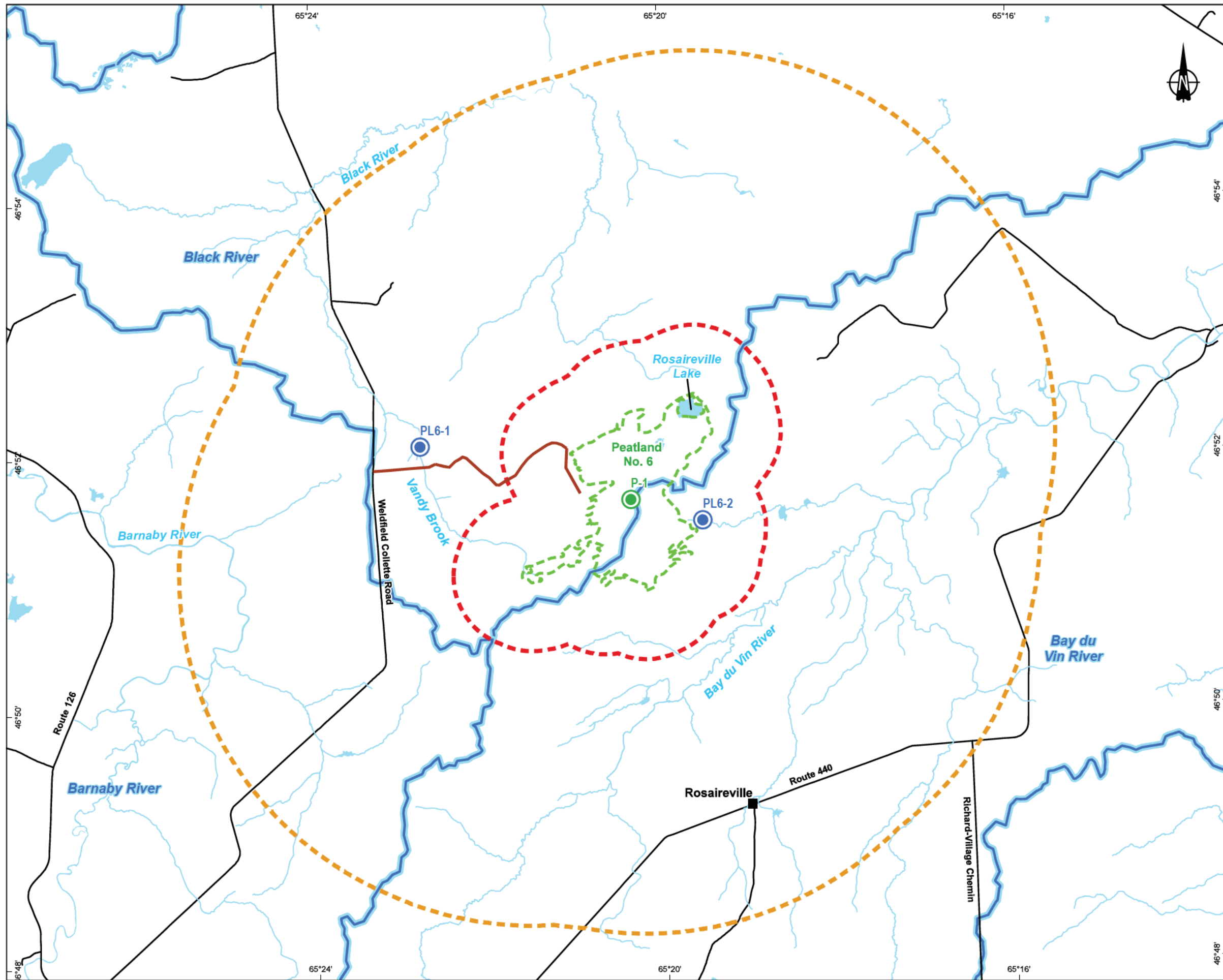
January 2022

Designed by: F. Quinty  
Drawn by: E. Remillard  
Checked by: F. Quinty  
211\_06686\_00\_EI\_c3\_iso\_depth\_wspa\_220125.mxd







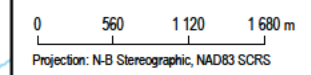


- Project Layout**
- Peat Sampling Station
  - Water Sampling Station
  - Peatland
  - Study Area 1 km
  - Study Area 5 km
  - Road
- Basemap**
- River
  - Road
  - Surface Hydrography
  - Watershed

**Theriault & Hachey Peat Moss Ltd. Peatland No. 6 Project**

**Map 4  
Physical Environment**

Sources:  
 Basemap: SNB GeoNB, Data Extraction on December 7, 2020;  
 World Imagery, Maxar 2018

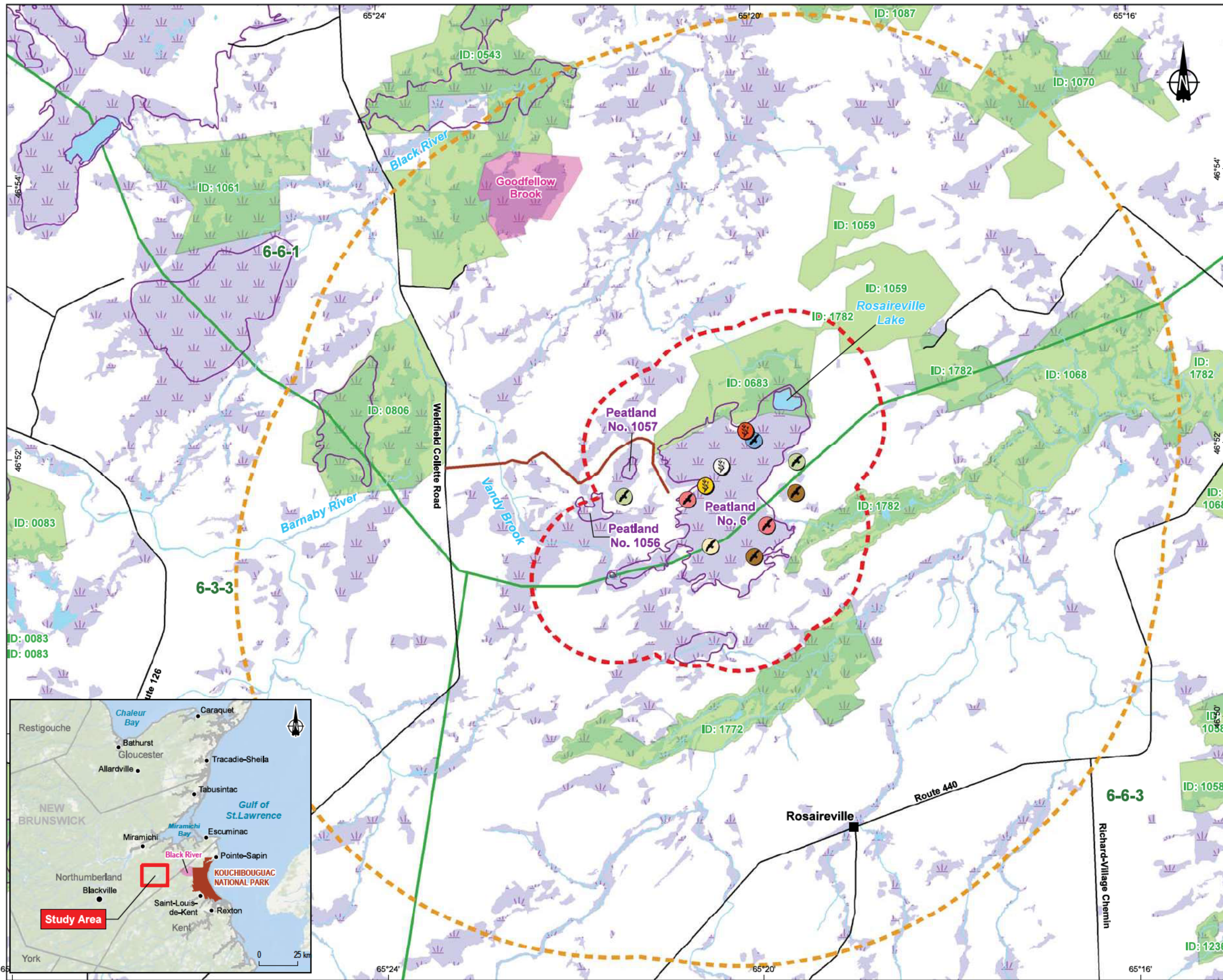


Projection: N-B Stereographic, NAD83 SCRS January 2022

Designed by: F. Quinty  
 Drawn by: E. Remillard  
 Checked by: F. Quinty  
 211\_06686\_00\_EI\_c4\_phys\_env\_220125.mxd







**Project Layout**

- Candidate Conservation Area
- Study Area 1 km
- Study Area 5 km
- Access Road

**Priority Plant Species Observations**

- Russet Cottongrass (*Eriophorum russeolum*)
- White Fringed Orchid (*Platanthera blephariglottis*)
- Cloudberry (*Rubus chamaemorus*)

**Priority Bird Species Observations**

- Common Nighthawk
- Olive-sided Flycatcher
- Wilson's Snipe
- Bufflehead
- Sandhill Crane

**Basemap**

- River
- Road
- Surface Hydrography
- National Park of Canada
- Protected Natural Area
- Peatland Boundary
- Wetland
- Ecosection (Ecological Land Classification)

**Theriault & Hachey Peat Moss Ltd. Peatland No. 6 Project**

**Map 5  
Biological Environment**

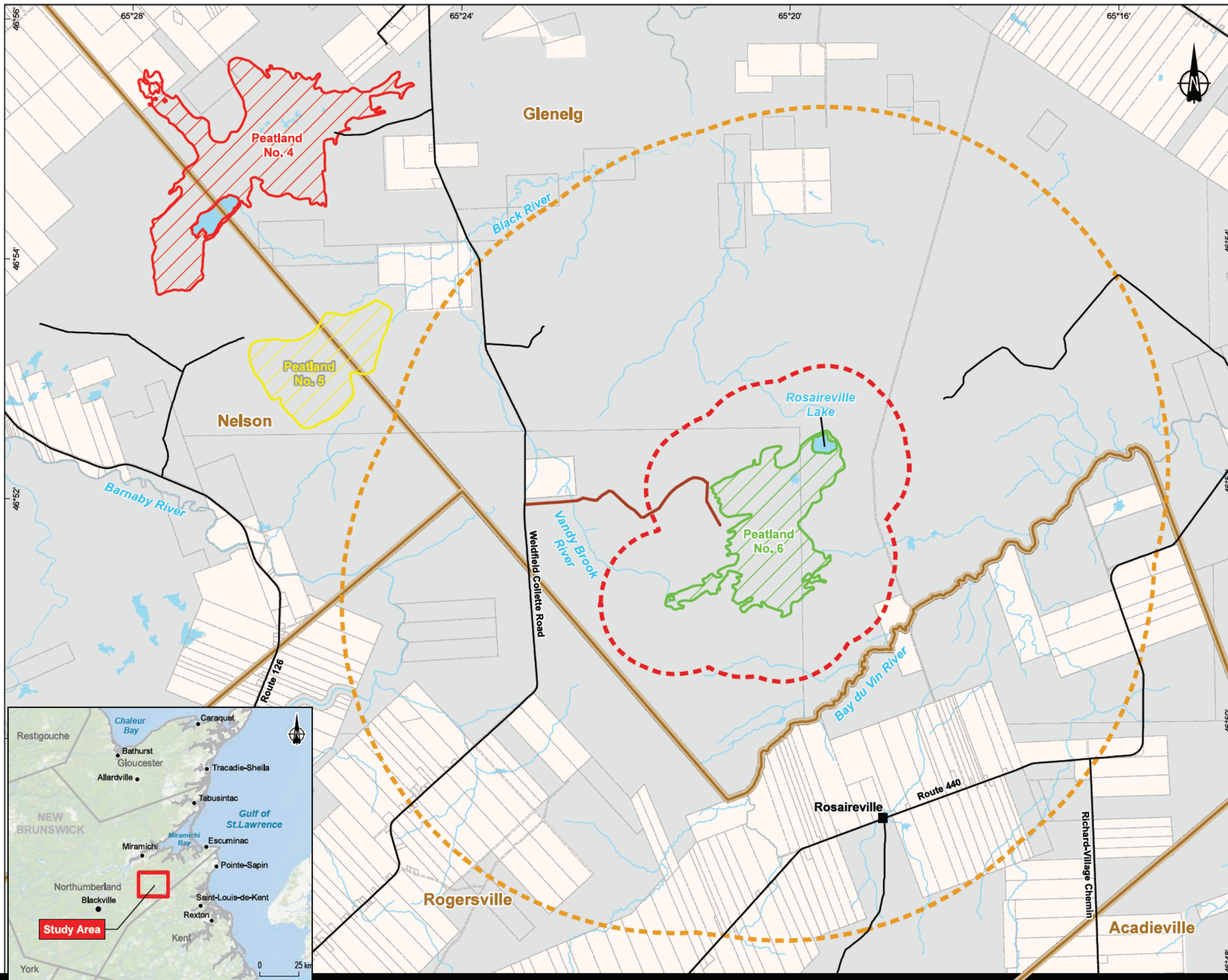
Sources:  
Basemap: SNB GeoNB, Data Extraction on December 7, 2020;  
World Imagery, Maxar 2018

0 520 1040 1560 m  
Projection: N-B Stereographic, NAD83 SCRS

January 2022  
Designed by: F. Quinty  
Drawn by: E. Remillard  
Checked by: F. Quinty  
211\_06686\_00\_EI\_c5\_bio\_env\_220214.mxd







- Project Layout**
- Study Area 1 km
  - Study Area 5 km
  - Access Road
- Peat Harvesting Operations**
- Sun Gro Horticulture Canada Ltd.
  - Future Operation
  - Theriault & Hachey Peat Moss Ltd.
- Basemap**
- River
  - Road
  - Surface Hydrography
  - Cadastral Boundary
  - Parish Boundary
  - Crown Land
  - Private Land

**Theriault & Hachey Peat Moss Ltd. Peatland No. 6 Project**

**Map 6  
Human Environment**

Sources:  
Basemap: SNB GeoNB, Data Extraction on December 7, 2020;  
World Imagery, Maxar 2018

0 600 1200 1800 m  
Projection: N-B Stereographic, NAD83 SCRS

January 2022  
Designed by: F. Quilty  
Drawn by: E. Remillard  
Checked by: F. Quilty  
211\_06686\_00\_EI\_c6\_human\_env\_220126.mxd



