

Appendix I Site Photographs



Photo 1 - View of the Site Entrance.



Photo 2 - View of the Site facing southeast (rock dryer and calcine tower).



Site Photographs



Photo 3 - View of the Site facing west (rock crusher, calcine baghouse and stucco tanks).



Photo 4 - View of the Site facing northwest (forklift maintenance, paper storage, paper delivery, and south warehouse).



Site Photographs



Photo 5 - View of Site facing east (outlet rolls, dryer zone #1 and north warehouse).



Photo 6 - View facing south of rock storage area.



Photo 7 - View of Rock crusher, looking northeast.



Photo 8 - View of calcine baghouse, looking southwest.



Photo 9 - Photo of rock dryer.



Photo 10 - Photo of stucco storage tanks, looking southwest.



Photo 11 - Photo of unwind stand in paper staging area.



Photo 12 - Photo of wet additives area, leading onto belt #1.





Photo 13 - Photo of belt #1 area.

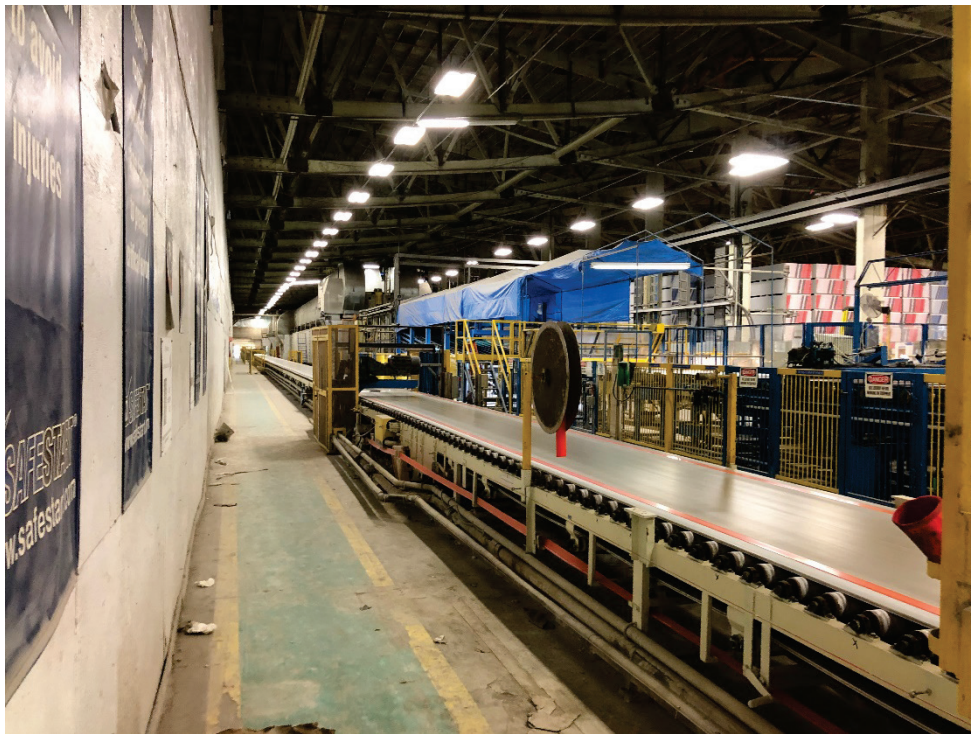


Photo 14 - Photo of belt #2 area in north warehouse.



Site Photographs



Photo 15 - Photo of accelerator rolls #1 on the left and dryer zone #2 on the right.



Photo 16 - View of knife area.



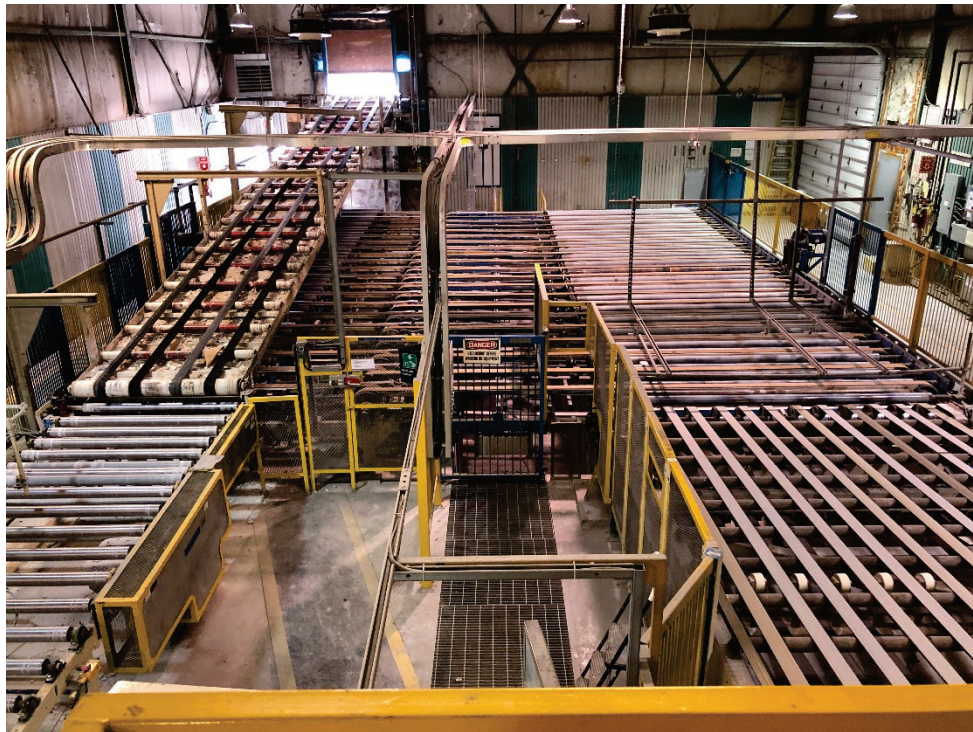


Photo 17 - View of inlet and outlet rolls.



Photo 18 - View of booker, bunder and stacker area.



Photo 19 - View of truck loading portion of north warehouse.



Photo 20 - View of rail loading portion of north warehouse.





Photo 21 - View of south warehouse.



Photo 22 - View of bulk chemical room (Chemical Tanks).



Photo 23 - View of hazmat storage room for waste chemicals and oils.



Photo 24 - View of forklift maintenance area (barrels of oils stored in corner).



Photo 25 - View of waste wallboard pile, facing southeast.



Photo 26 - View of waste paper pile. Facing south.



Site Photographs



Photo 27 - View of chemical storage tanks in wet additives area.



Photo 28 - View of storage tank in AQUA.



Photo 29 - View of 113,500L Furnace oil tank (formerly bunker C) in rock dryer area.



Photo 30 - View of 113,500L Furnace oil tank in north warehouse.



Photo 31 - View of propane storage tank located outside north warehouse to the west.



Photo 32 - View of propane storage tank outside rock dryer to the north.



Photo 33 - View of swale ditch on the east side of the property, facing north.



Photo 34 - View of outlet pipe from site surface drainage system, entering swale ditch on the south side of the property.



Photo 35 - View of swale ditch entering sedimentation pond on the western edge of the property.



Photo 36 - View of sedimentation pond on the west side of the property.



Photo 37 - View of drainage ditch along the edge of the waste wallboard pile.



Photo 38 - View of water exiting the sedimentation pond. Siltation device in disrepair.





Photo 39 - View of outflow culvert across the main line tracks leading off-site entering designated wetland and the Digdequash water system.



Photo 40 - View of one of the onsite well houses.



Photo 41 - View of main pump house controlling all the onsite wells.



Photo 42 - View of fire pump house, looking north.





Photo 43 - View of one of two fireponds on site.



Photo 44 - View of on-site CNG terminal operated by Irving Oil, facing north.



Photo 45 - View of transmission substation located on the northwest corner of the site.



Photo 46 - View of rockhill extension area on the north portion of the property, where old building debris buried.



Photo 47 - View of 1,100 L diesel tank located in the Loader Shed.