

APPENDIX A. FIGURES



Prepared For:



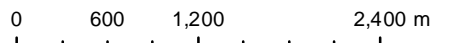
Figure 1
Proposed Pokeshaw Wind
Power Project
Site Location

Pokeshaw, NB

 Project Area



Coordinate System: NAD 1983 CSRS UTM Zone 20N
 Projection: Transverse Mercator
 Datum: North American 1983 CSRS
 Units: Meter



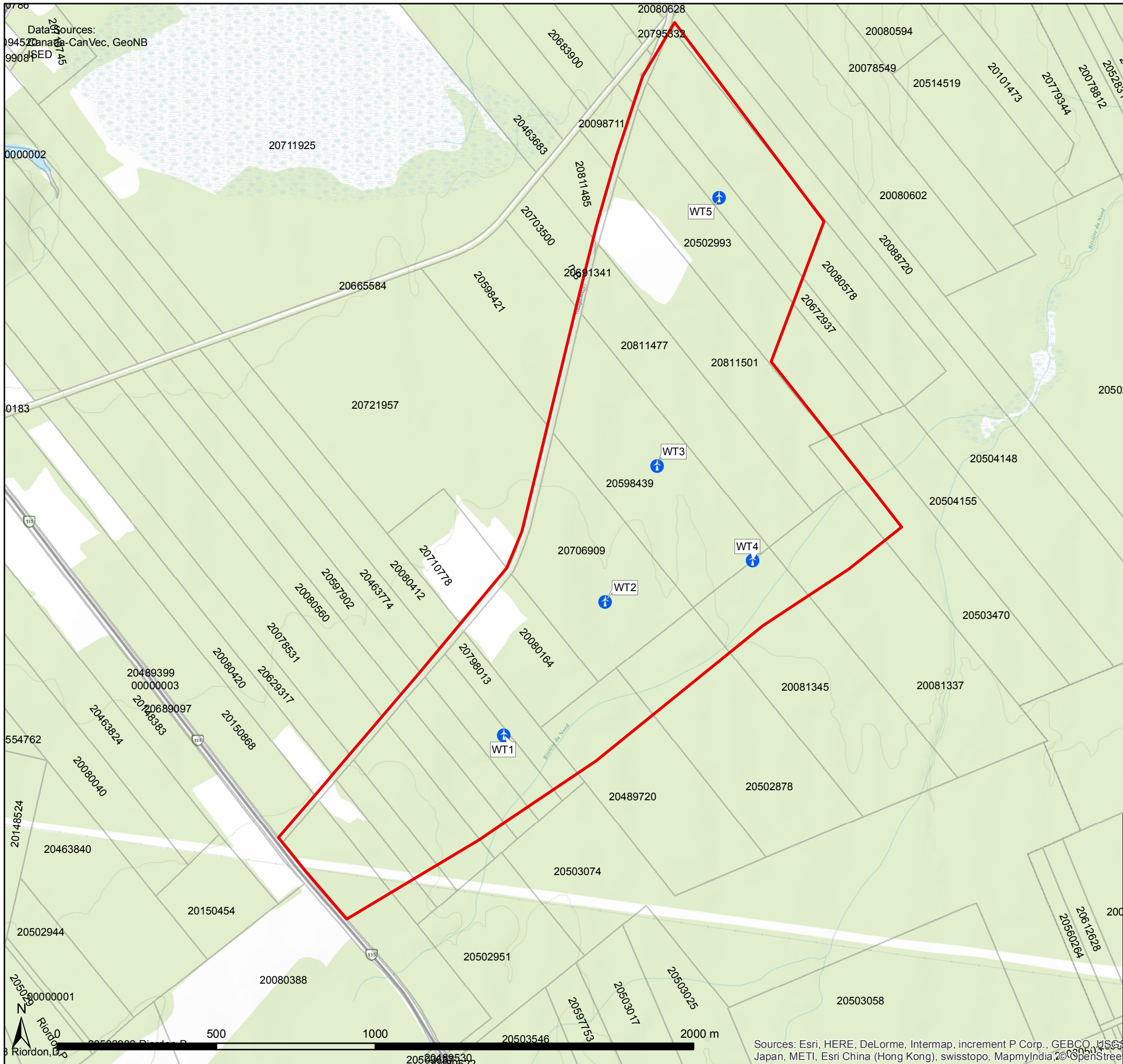
1:50,000 Scale when printed @ 11" x 17"

Drawn By: EP

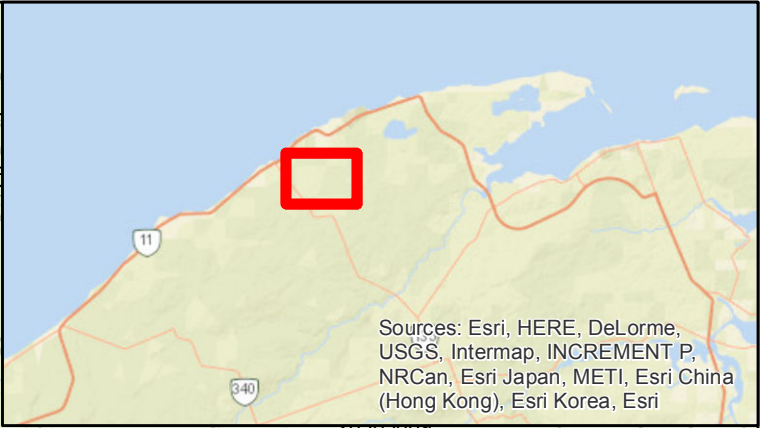
Date: 2019-07-05



McCallum Environmental Ltd.



Data Sources:
 19452 Canada-CanVec, GeoNB
 9908 SED




Sources: Esri, HERE, DeLorme,
 USGS, Intermap, INCREMENT P,
 NRCAN, Esri Japan, METI, Esri China
 (Hong Kong), Esri Korea, Esri

Legend

- Project Area
- PID's
- Layout 03.06.2019**
- ↑ Turbine Site

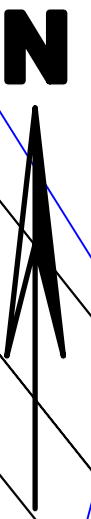
Content: Wind Farm Layout 03.06.2019 with PID's

Project: Pokeshaw Figure No.:2







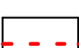



IFE Project Management Canada Inc.
 5657 Spring Garden Road, Suite 700
 Halifax, Nova Scotia B3L 3R4 Canada
 phone 902-482-1807

Size: DIN A3	Scale: 1:12000	create date: 20.04.2016	change date: 19.06.2019	created by: Gautier
-----------------	-------------------	----------------------------	----------------------------	------------------------



Key:

- | | |
|--|---|
|  crane pad, 5050m ² |  construction corridor |
|  pre-assembly area, 4250m ² |  delineated wetland |
|  storage / laydown area, 6650m ² |  area of disturbance, 2920m ² |
|  length of cable, 4859m |  substation area, 1500m ² |

Content:

5 x 4.0 MW, construction corridor for access roads and crane pads

Project:

NB - Pokeshaw

Figure No.: 3

Project Phase:

planning phase



IFE Project Management Canada Inc.
5657 Spring Garden Road, Suite 700
Halifax, Nova Scotia B3J 3R4 Canada

PI: 78	Size: DIN A3	Scale: 1:6500	create Date: 27.06.2019	change Date:	created by: Sp
-----------	-----------------	------------------	----------------------------	--------------	-------------------

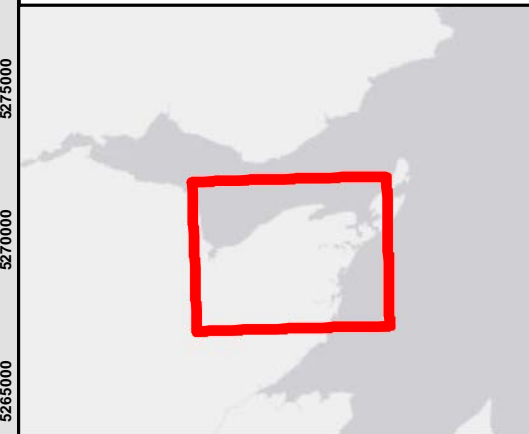
Prepared For:



Figure 4 Proposed Pokeshaw Wind Power Project Significant Land Use

Pokeshaw, NB

- Mapped Watercourses (NBHN, 2019)
- Important Bird Area
- Watersheds_ZoneA
- Watersheds_ZoneAp
- Watersheds_ZoneB
- Watersheds_ZoneC
- Pokemouche Indian Reserve No. 13
- Deer Wintering Area (NBDERD, 2019)
- Wildlife Management Area (NBDERD, 2019)
- Provincially Significant Wetland (NBDELG, 2019)
- Protected Natural Area (NBDERD, 2019)
- Study Area



Coordinate System: NAD 1983 CSRS UTM Zone 20N
Projection: Transverse Mercator
Datum: North American 1983 CSRS
Units: Meter



0 3,000 6,000 12,000 m

1:250,000 Scale when printed @ 11" x 17"

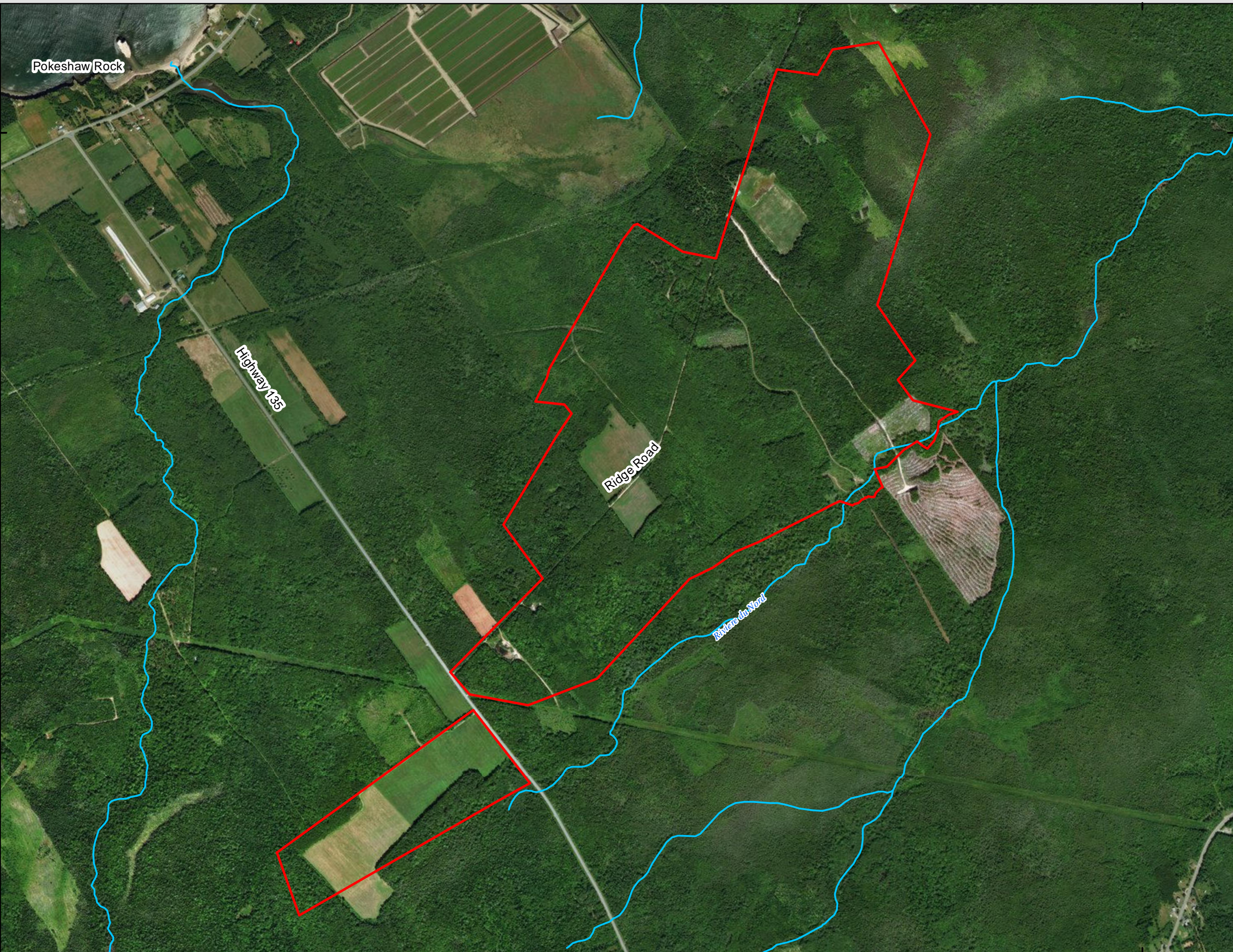
Drawn By: EP

Date: 2019-07-15



McCallum Environmental Ltd.







Prepared For:



Figure 5 Proposed Pokeshaw Wind Power Project Study Area

Pokeshaw, NB

-  Mapped Watercourses (NBHN, 2019)
-  Study Area



Coordinate System: NAD 1983 CSRS UTM Zone 20N
 Projection: Transverse Mercator
 Datum: North American 1983 CSRS
 Units: Meter



0 170 340 680 m

1:13,800 Scale when printed @ 11" x 17"

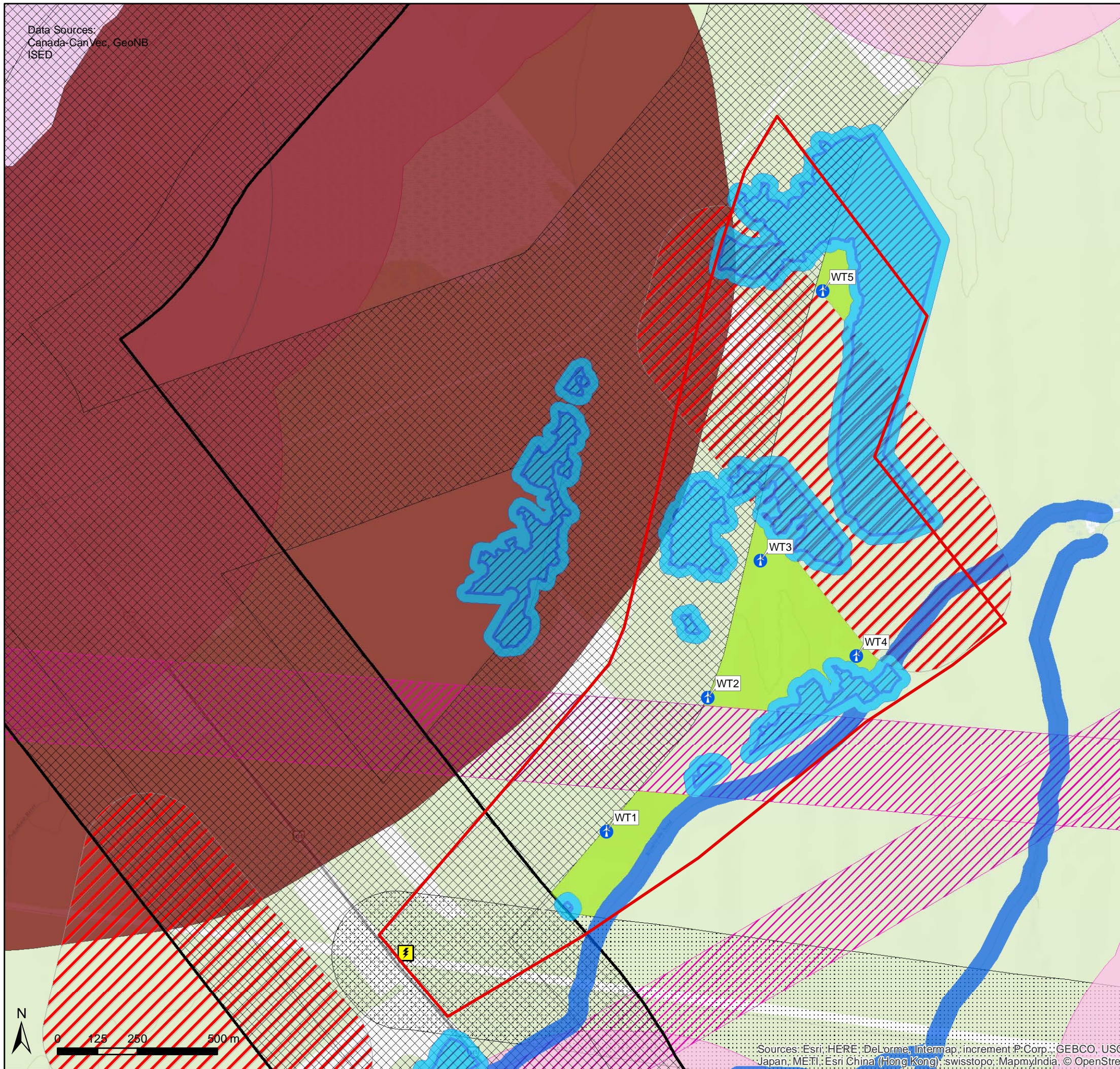
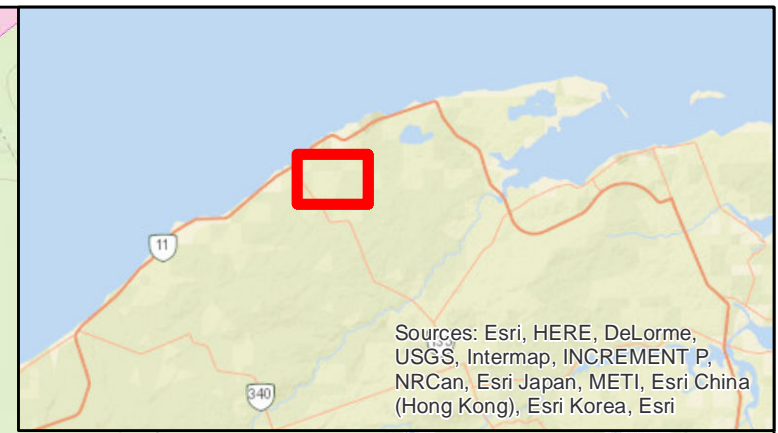
Drawn By: EP

Date: 2019-07-05



McCallum Environmental Ltd.

Data Sources:
Canada-CanVec, GeoNB
ISED



Legend

- Buildable Area
- Project Area

Setbacks and Constraints

- Setback Highway 500m
- PtP Consultation Zone
- Important Bird Area +1000m
- Setback Buildings 800m
- Power Line +200m
- Setback Roads / Trails 300m
- Field Delineated Wetlands / River + 30m
- Field Delineated Wetlands
- Setback to Property

Layout 03.06.2019

- Turbine Site
- Substation

Content:
Windfarm Layout 03.06.2019, Setbacks & Buildable Area

Project: Pokeshaw Figure No.: 6

 IFE Project Management Canada Inc.
5657 Spring Garden Road, Suite 700
Halifax, Nova Scotia B3L 3R4 Canada
phone 902-482-1807

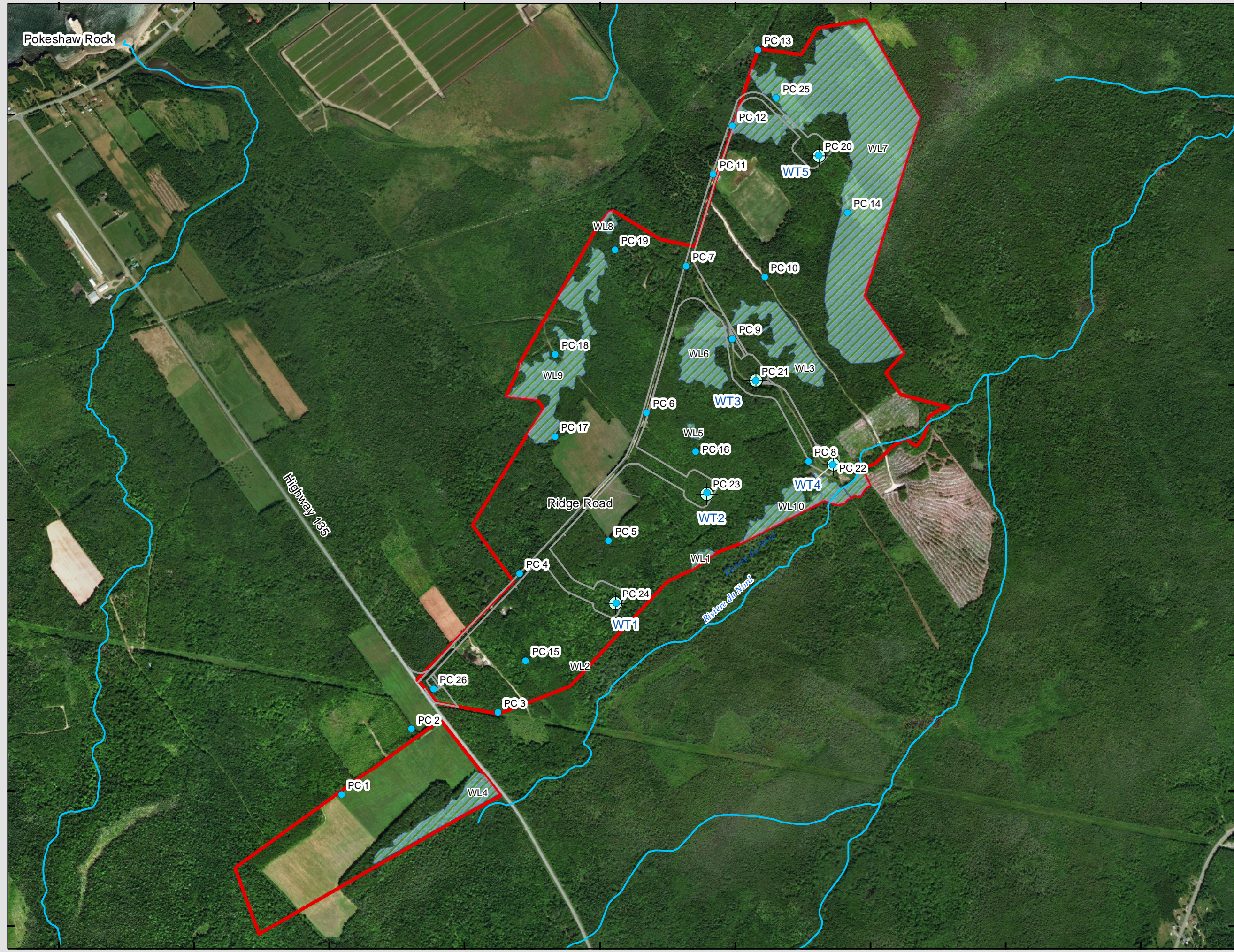
Size: DIN A3	Scale: 1:12000	create date: 20.04.2016	change date: 20.06.2019	created by: Gautier
-----------------	-------------------	----------------------------	----------------------------	------------------------



NAD 1983 CSRS New Brunswick Stereographic

Sources: Esri, HERE, DeLorme, Intermap, INCREMENT P, Corp., GEBCO, USGS, Japan, METI, Esri China (Hong Kong), swisstopo, MapmyIndia, © OpenStreetMap contributors, and the GIS User Community

Y:\ArcGIS10_CanadaNewBrunswick\Pokeshaw\Pokeshaw_Setbacks_AddMappingAreas.mxd



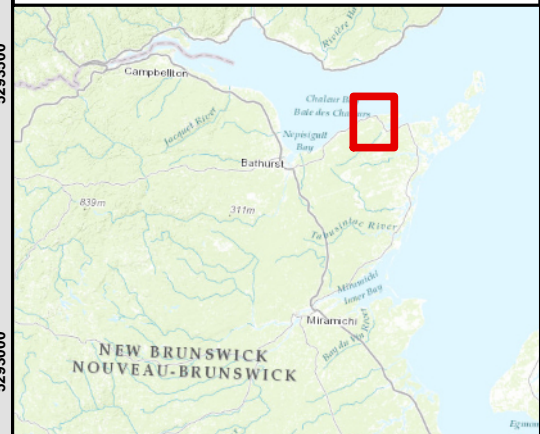
Prepared For:



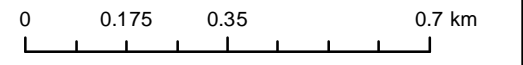
FIGURE 7a

**Pokeshaw Wind Project
Avian Point Count Locations**

- Point Count Survey Locations
- ⊕ Proposed Turbine Location
- Construction Corridor
- Mapped Watercourses (NBHN, 2019)
- ▨ Field Delineated Wetlands
- ▭ Study Area



Coordinate System: NAD 1983 CSRS UTM Zone 20N
 Projection: Transverse Mercator
 Datum: North American 1983 CSRS
 Units: Meter



1:13,110 Scale when printed @ 11" x 17"

Drawn By: EP

Date: 2019-07-15



















McCallum Environmental Ltd.



FIGURE 7b

**Pokeshaw Wind Project
Avian Watch Count
and Transect Survey Locations**

-  Watch Count Survey Locations
 -  Common Nighthawk Survey Locations
 -  Proposed Turbine Location
 -  Construction Corridor
 -  Mapped Watercourses (NBHN, 2019)
 -  Winter Avian Transects
- Area Search Transects**
-  T1-2
 -  T17-18
 -  T19
 -  T4
 -  T5
 -  T6-16
 -  T8
 -  T9-8
 -  Field Delineated Wetlands
 -  Study Area



Coordinate System: NAD 1983 CSRS UTM Zone 20N
 Projection: Transverse Mercator
 Datum: North American 1983 CSRS
 Units: Meter

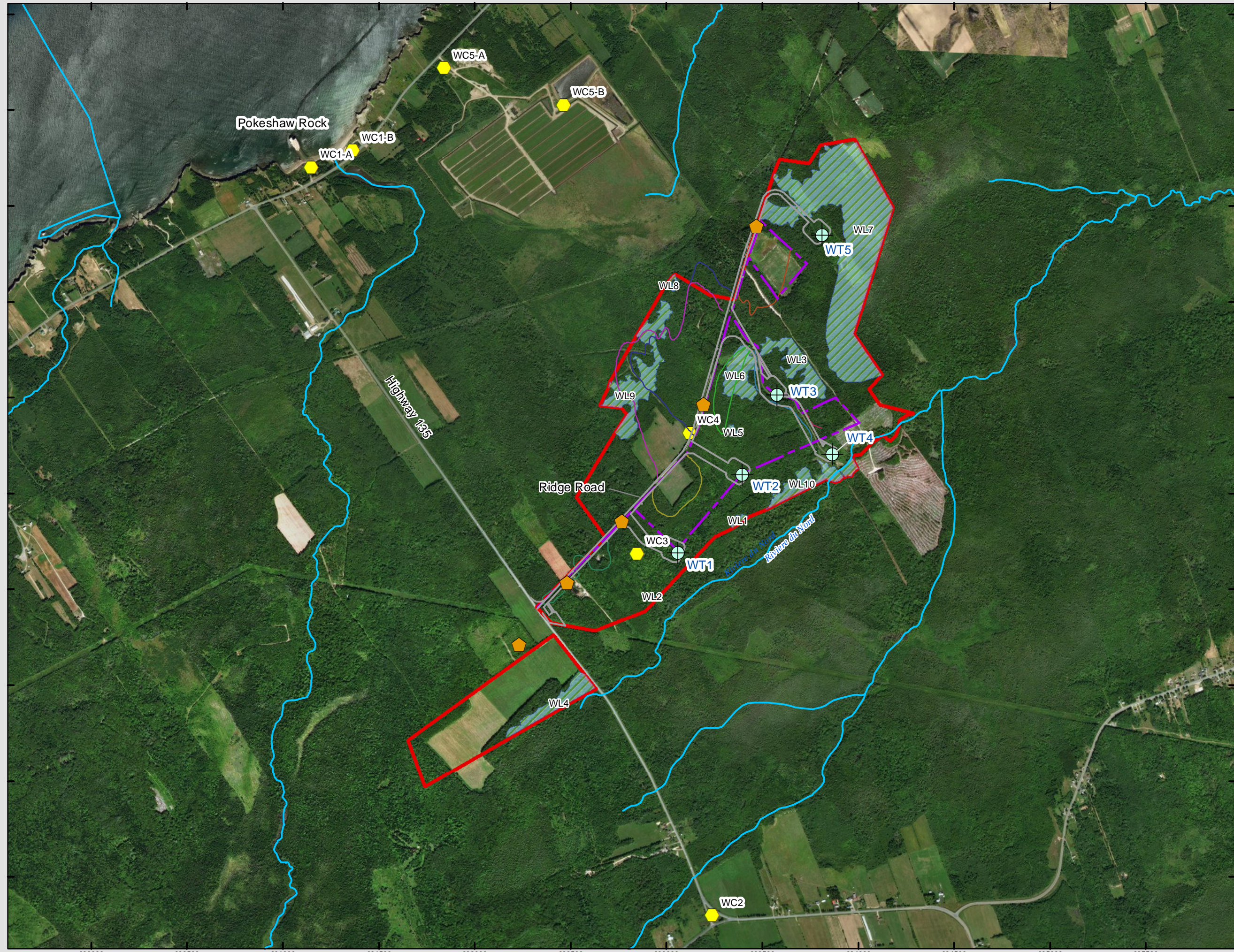


1:18,500 Scale when printed @ 11" x 17"

Drawn By: EP Date: 2019-07-15



McCallum Environmental Ltd.



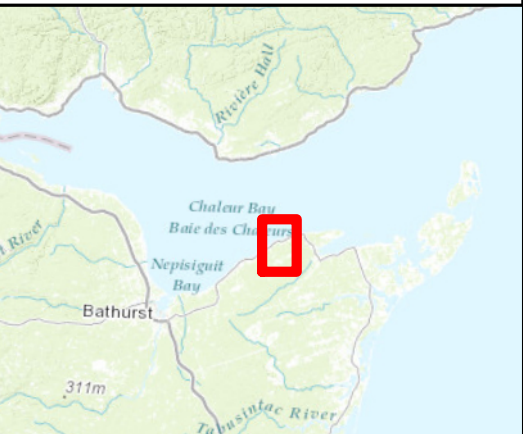
Prepared For:



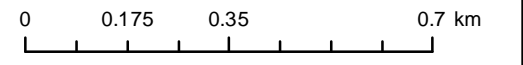
FIGURE 8

Pokeshaw Black Rock Wind Project Bat Monitor Locations, Habitat Assessment Points, and Forestry Cover Types

- Habitat Assessment Point
- Bat Monitor Locations
- Proposed Turbine Location
- Construction Corridor
- Mapped Watercourses (NBHN, 2019)
- Study Area
- Field Delineated Wetlands



Coordinate System: NAD 1983 CSRS UTM Zone 20N
 Projection: Transverse Mercator
 Datum: North American 1983 CSRS
 Units: Meter



1:13,000 Scale when printed @ 11" x 17"

Drawn By: EP Date: 2019-07-15



McCallum Environmental Ltd.

Document Name: 190625_Bat_Monitor_Locations











Prepared For:



FIGURE 9

**Pokeshaw Black Rock
Wind Project
Aquatic Environment**

-  Proposed Turbine Location
-  Mapped Watercourses (NBHN, 2019)
-  Constraint Corridor
-  Mapped Regulated Wetlands (NBDELG, 2019)
-  Field Delineated Wetlands
-  Study Area



Coordinate System: NAD 1983 CSRS UTM Zone 20N
 Projection: Transverse Mercator
 Datum: North American 1983 CSRS
 Units: Meter



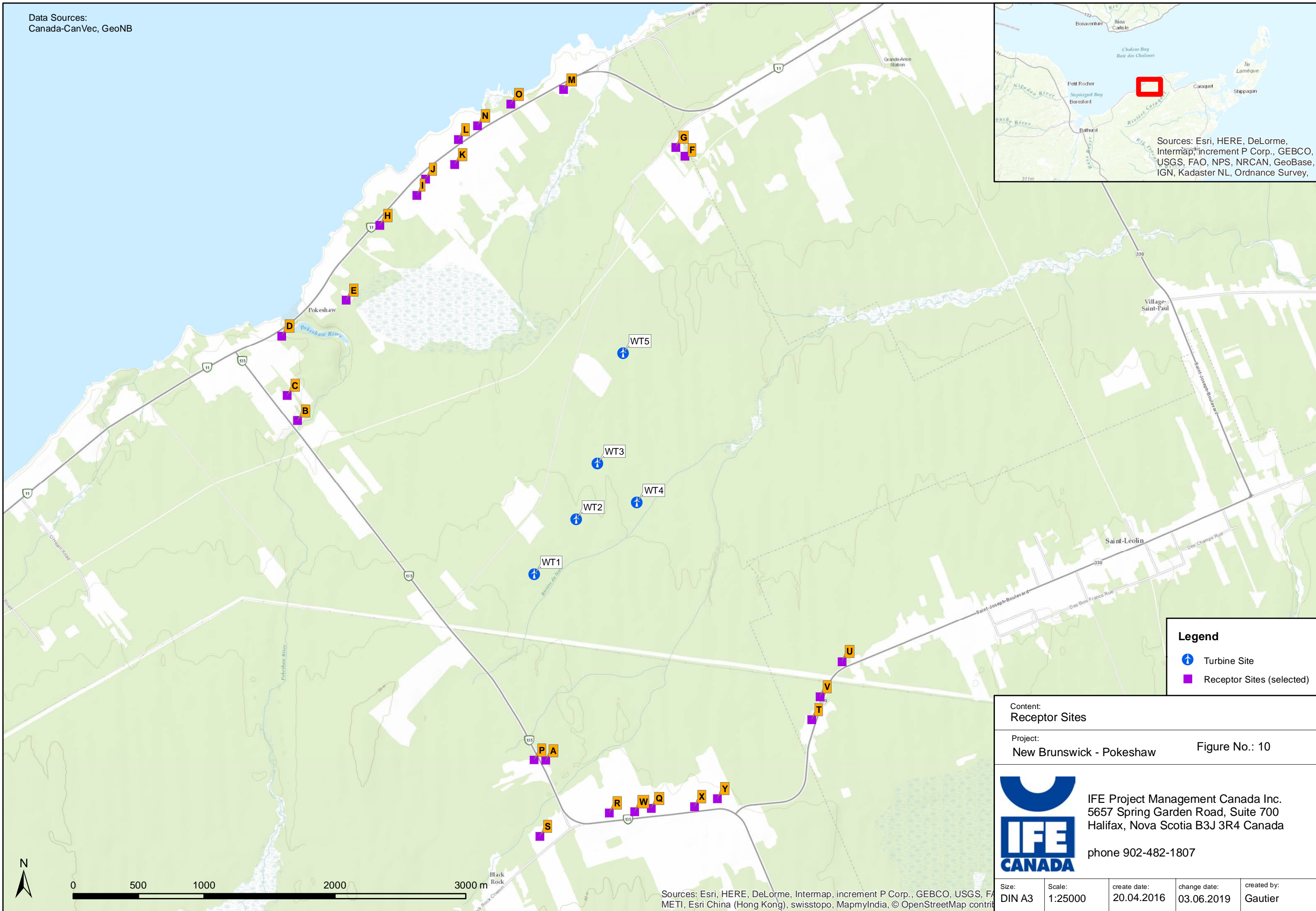
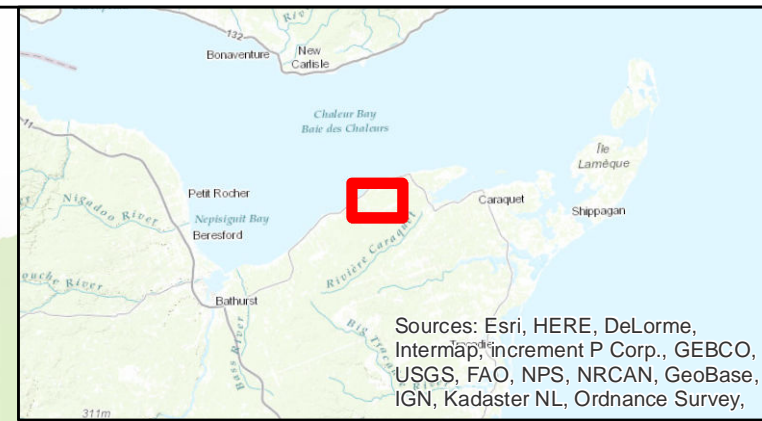
1:14,000 Scale when printed @ 11" x 17"

Drawn By: EP Date: 2019-07-05



McCallum Environmental Ltd.

Data Sources:
Canada-CanVec, GeoNB



Legend

- ↑ Turbine Site
- Receptor Sites (selected)

Content:
Receptor Sites

Project:
New Brunswick - Pokeshaw

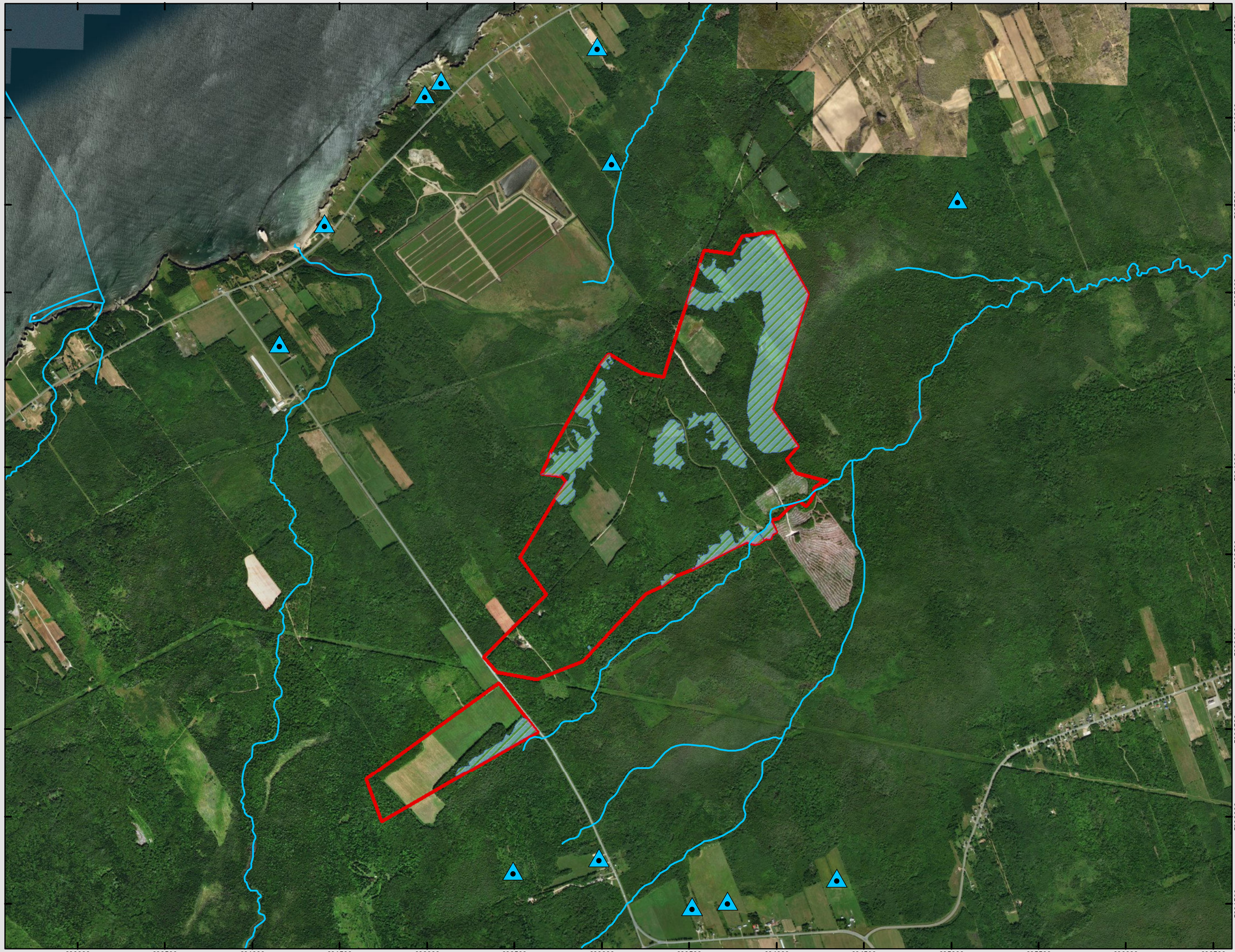
Figure No.: 10

IFE Project Management Canada Inc.
5657 Spring Garden Road, Suite 700
Halifax, Nova Scotia B3J 3R4 Canada
phone 902-482-1807



Sources: Esri, HERE, DeLorme, Intermap, increment P Corp., GEBCO, USGS, FAO, METI, Esri China (Hong Kong), swisstopo, MapmyIndia, © OpenStreetMap contributors

Size: DIN A3	Scale: 1:25000	create date: 20.04.2016	change date: 03.06.2019	created by: Gautier
-----------------	-------------------	----------------------------	----------------------------	------------------------







Prepared For:



FIGURE 11

**Pokeshaw Black Rock
Wind Project
Well Locations**

-  Well Locations (NBDELG, 2019)
-  Mapped Watercourses
-  Field Delineated Wetlands
-  Study Area



Coordinate System: NAD 1983 CSRS UTM Zone 20N
Projection: Transverse Mercator
Datum: North American 1983 CSRS
Units: Meter



0 240 480 960 Meters

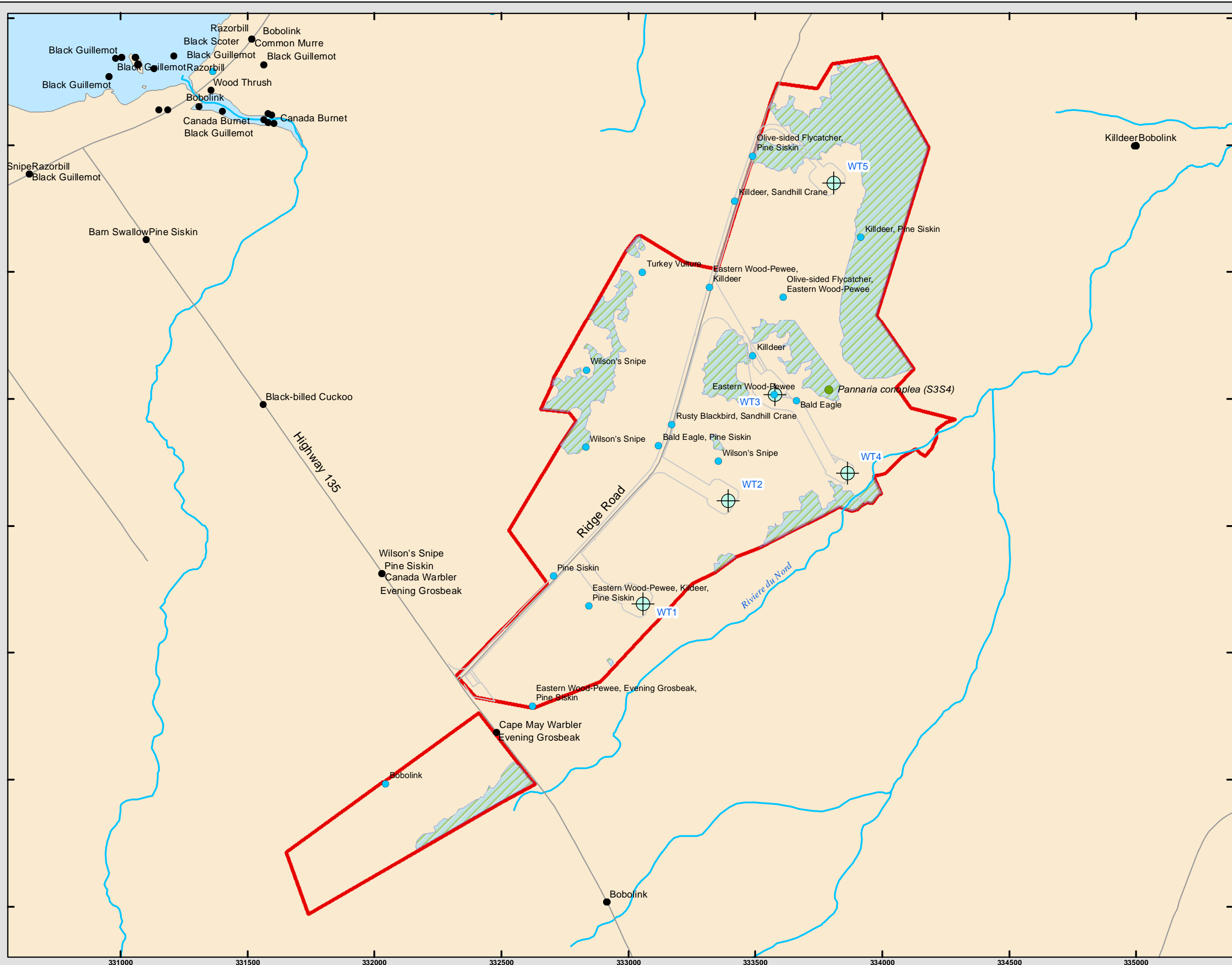
1:20,300 Scale when printed @ 11" x 17"

Drawn By: EP

Date: 2019-07-05



McCallum Environmental Ltd.



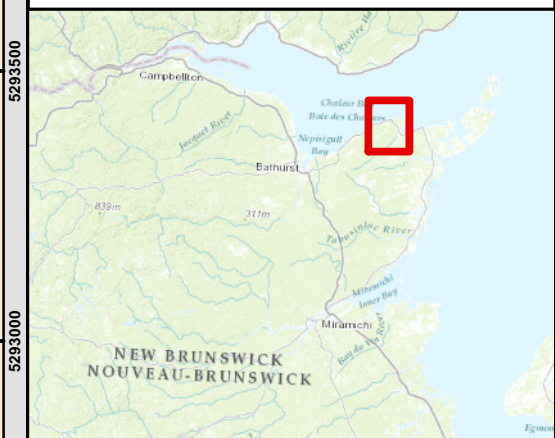
Prepared For:



FIGURE 12

**Pokeshaw Black Rock
Wind Project
SAR and SOCI
Field Verified and ACCDC**

- Field Observation SAR/SOCI Avian Species
- ACCDC Observation
- Field Observation SOCI Lichen
- Proposed Turbine Location
- Construction Corridor
- Road
- Mapped Watercourses
- Field Delineated Wetlands
- Study Area



Coordinate System: NAD 1983 CSRS UTM Zone 20N
Projection: Transverse Mercator
Datum: North American 1983 CSRS
Units: Meter



0 175 350 700 Meters

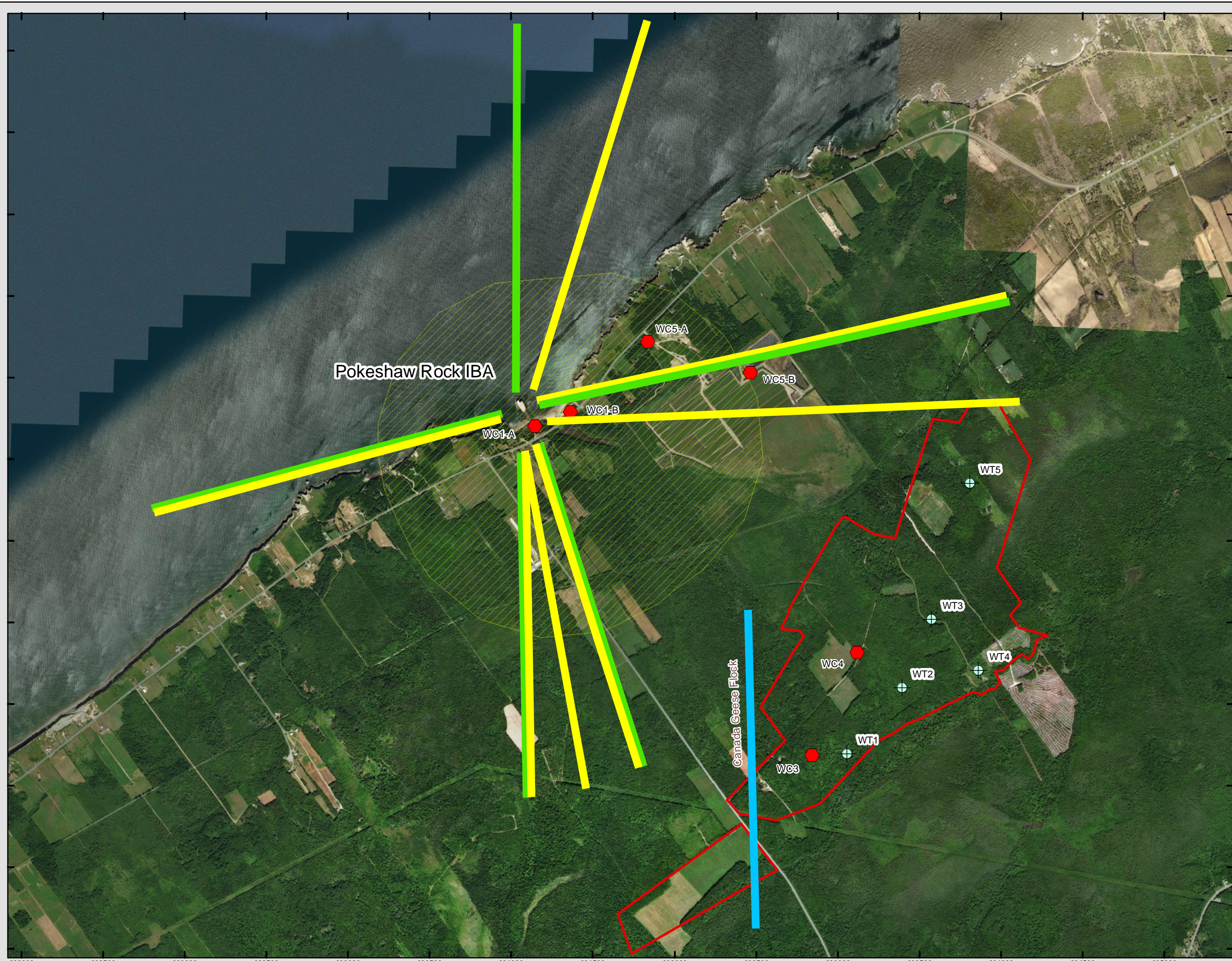
1:13,943 Scale when printed @ 11" x 17"

Drawn By: EP

Date: 2019-07-05



McCallum Environmental Ltd.



Prepared For:



FIGURE 13

Pokeshaw Black Rock Wind Project

Approximate Watchcount Flight Paths of Large Flocks of Birds

Direction of Flight Path

- North to South near Study Area (Canada Geese)
- Away from IBA
- Towards IBA
- Proposed Turbine Location
- Watch Count Locations
- Important Bird Area
- Study Area



Coordinate System: NAD 1983 CSRS UTM Zone 20N
 Projection: Transverse Mercator
 Datum: North American 1983 CSRS
 Units: Meter



1:21,700 Scale when printed @ 11" x 17"

Drawn By: EP

Date: 2019-07-17



McCallum Environmental Ltd.