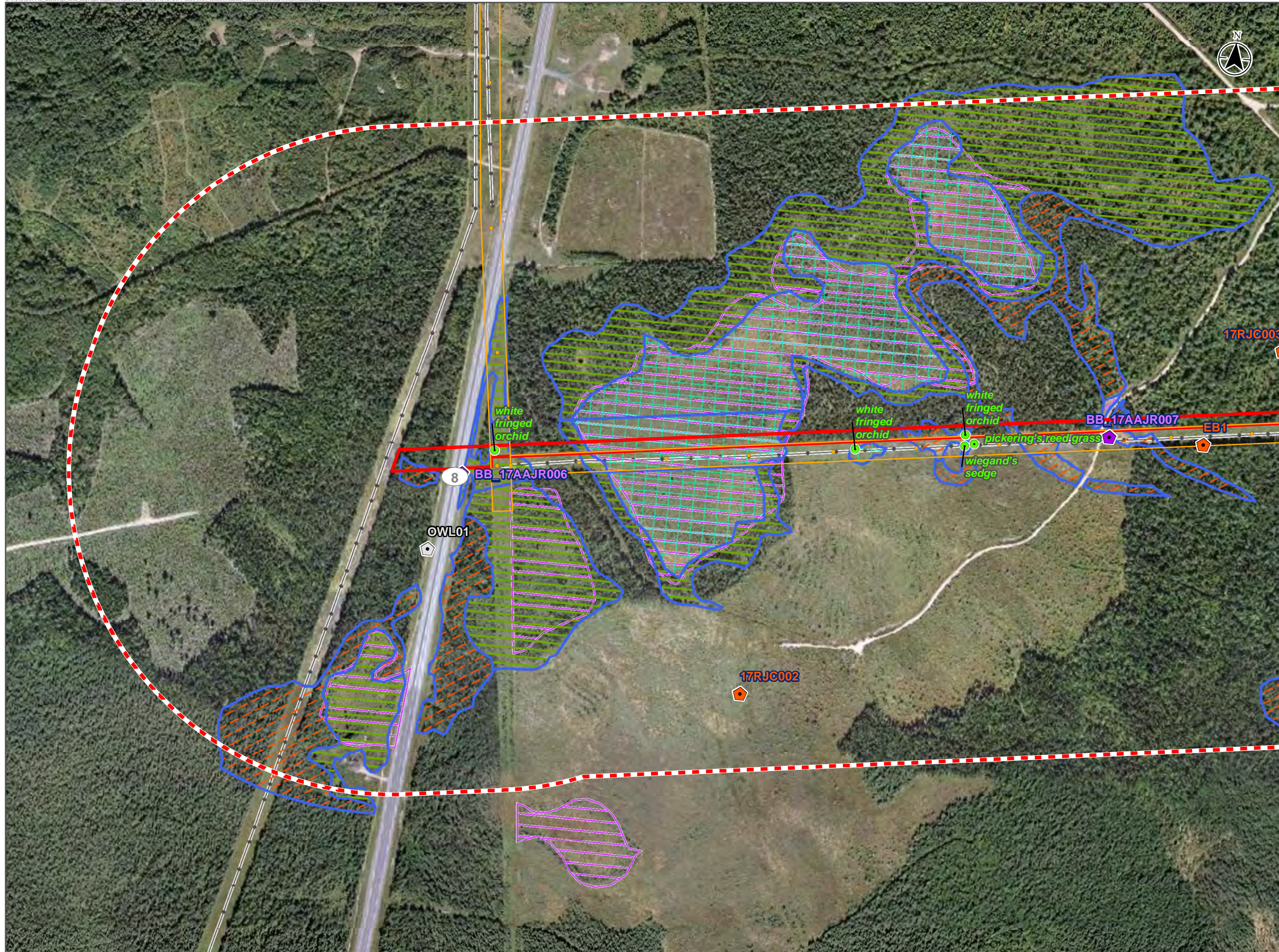


December 22, 2017

Appendix C **VEGETATION AND WETLANDS, AND
WILDLIFE AND WILDLIFE HABITAT
FEATURES OBSERVED IN THE LOCAL
ASSESSMENT AREA**

ENVIRONMENTAL IMPACT ASSESSMENT (EIA) REGISTRATION FOR THE MODERNIZATION OF ELECTRICAL TRANSMISSION INFRASTRUCTURE NEAR NEGUAC, NEW BRUNSWICK

December 22, 2017



Freshwater Fish and Fish Habitat, Vegetation and Wetlands, and Wildlife and Wildlife Habitat Features Observed in the Local Assessment Area

Field Observation of Species at Risk (SAR) and of Conservation Concern (SOCC)

- Vascular Plant (SOCC)

SurveyType

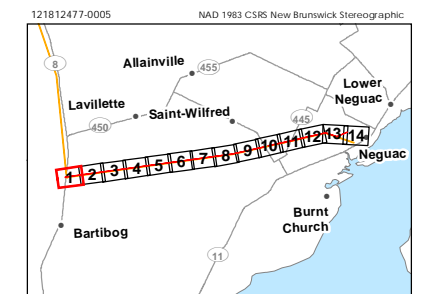
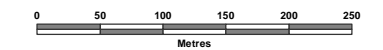
- ◆ Breeding Bird Point Count Location
- ◆ Nightjar Point Count Location
- ◆ Owl Point Count Location

Field Delineated / Desktop Interpreted Wetland

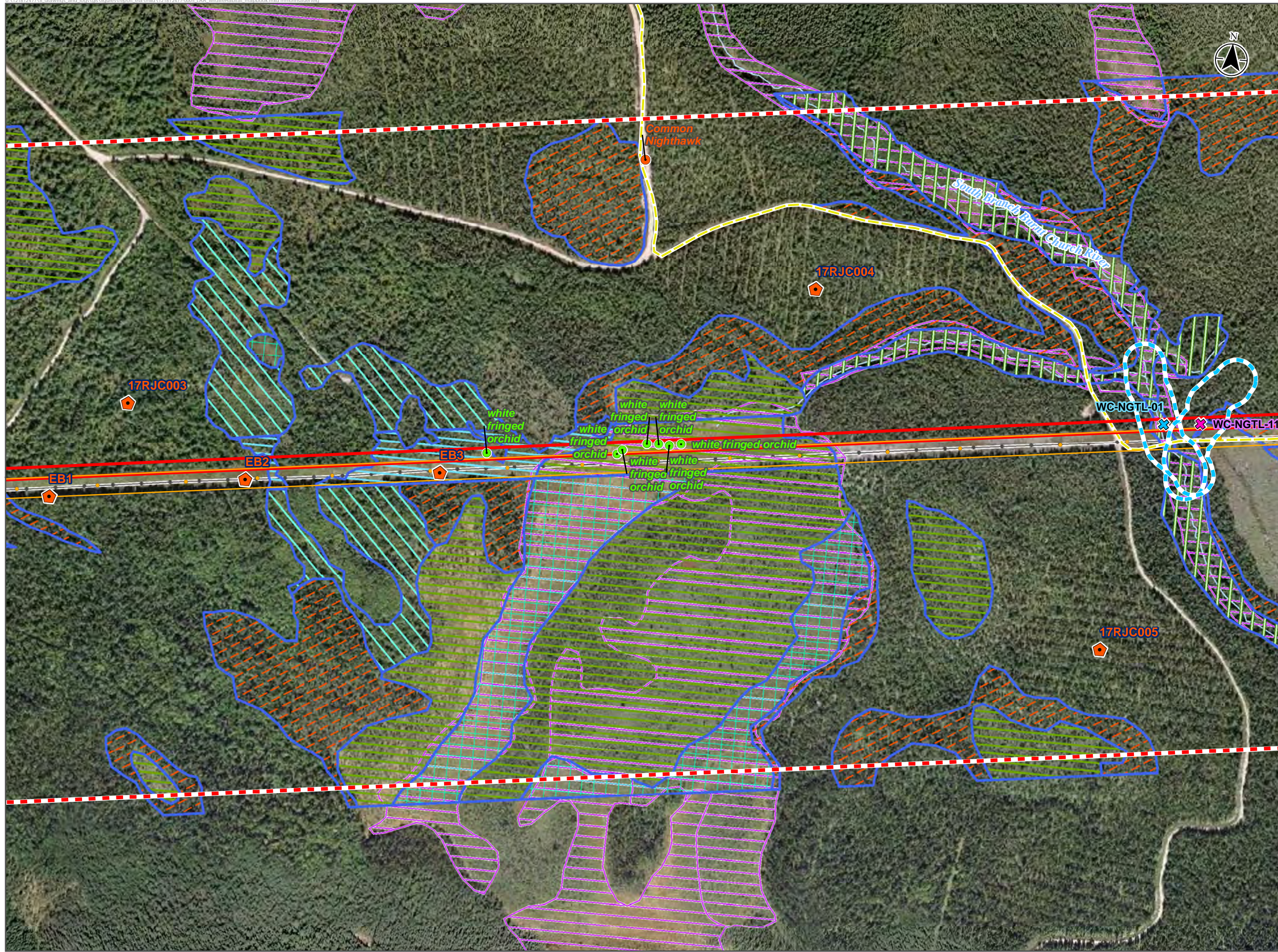
- Bog
- Coniferous Treed Swamp
- Shallow Water Wetland
- Treed Bog
- GeoNB-mapped Wetland
- Terrestrial Local Assessment Area

Project Components

- Existing Pole Structure to be Decommissioned
- Line to be Decommissioned PDA
- Project Development Area (PDA)
- Major Road



Sources: Base data provided by the Government of New Brunswick.
121812477 - NEGUAC TRANSMISSION LINE



Freshwater Fish and Fish Habitat, Vegetation and Wetlands, and Wildlife and Wildlife Habitat Features Observed in the Local Assessment Area

Field Observation of Species at Risk (SAR) and of Conservation Concern (SOCC)

● Bird Observation (SAR)

Field Observation of Species at Risk (SAR) and of Conservation Concern (SOCC)

● Vascular Plant (SOCC)

SurveyType

⬠ Breeding Bird Point Count Location

Watercourse Crossing

✕ Phase 1 No Defined Channel/Ephemeral

✕ Phase 1 Watercourse

— Recreational Trail (ATV & Snowmobile)

— Watercourse

Field Delineated / Desktop Interpreted Wetland

- ⬠ Bog
- ⬠ Coniferous Treed Swamp
- ⬠ Deciduous Treed Swamp
- ⬠ Fen
- ⬠ Mixedwood Treed Swamp
- ⬠ Tall Shrub Swamp
- ⬠ Treed Bog

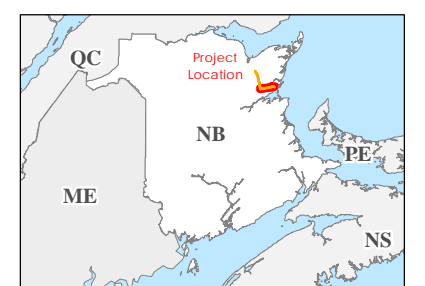
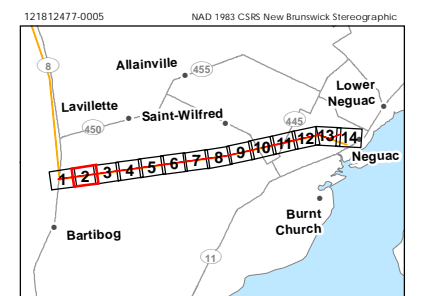
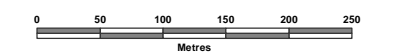
⬠ GeoNB-mapped Wetland

⬠ Terrestrial Local Assessment Area

⬠ Watercourse Crossing Local Assessment Area

Project Components

- Existing Pole Structure to be Decommissioned
- ⬠ Line to be Decommissioned PDA
- ⬠ Project Development Area (PDA)



Sources: Base data provided by the Government of New Brunswick.
121812477 - NEGUAC TRANSMISSION LINE

North Branch
Burnt Church
River PNA

Freshwater Fish and Fish Habitat, Vegetation and Wetlands, and Wildlife and Wildlife Habitat Features Observed in the Local Assessment Area

Field Observation of Species at Risk (SAR) and of Conservation Concern (SOCC)

- Bird Observation (SAR)
- Bird Observation (SOCC)

SurveyType

- Breeding Bird Point Count Location
- Nighthawk Point Count Location

Watercourse Crossing

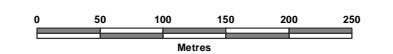
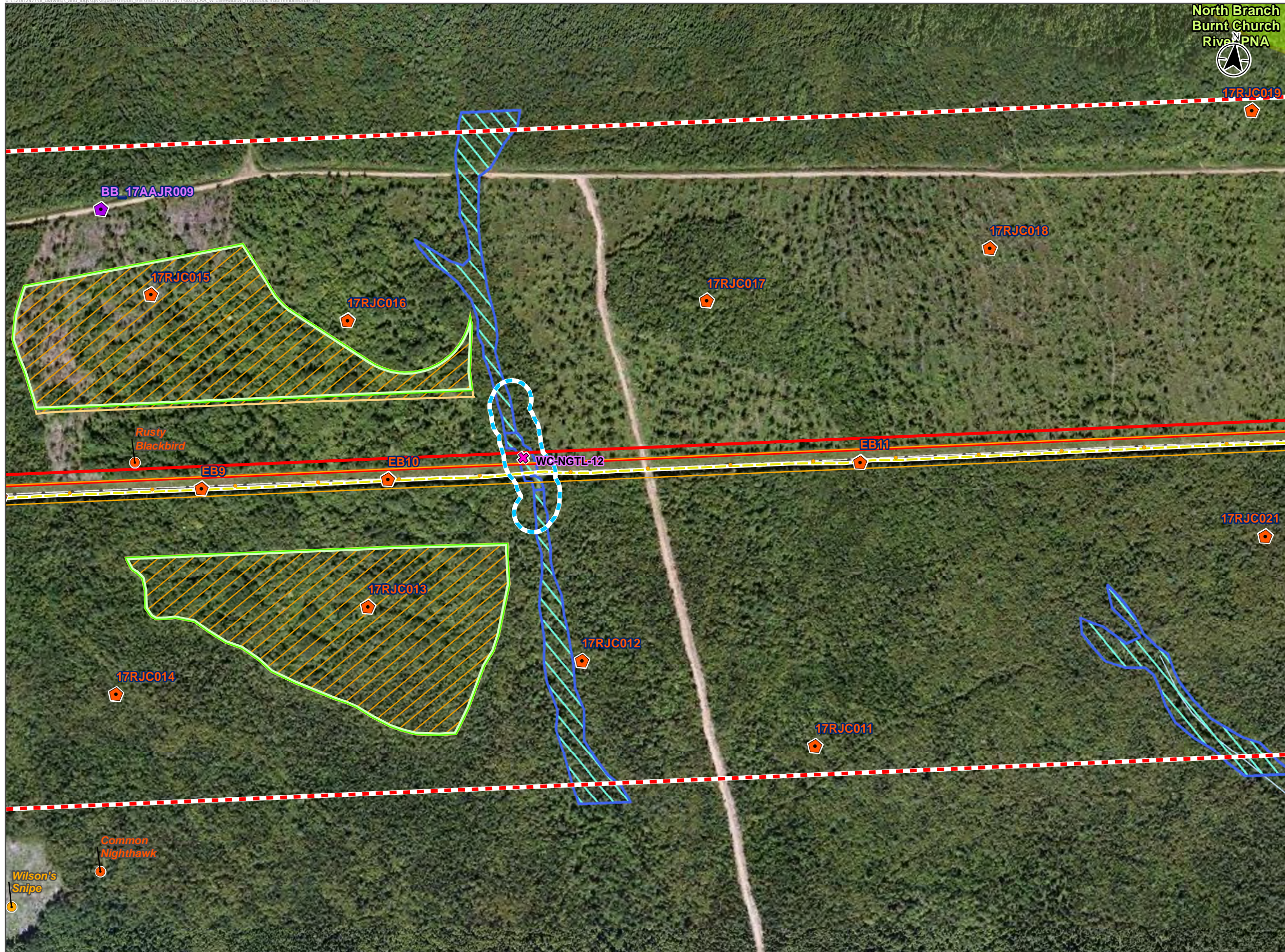
- ✕ Phase 1 No Defined Channel/Ephemeral
- Recreational Trail (ATV & Snowmobile)
- Watercourse

Field Delineated / Desktop Interpreted Wetland

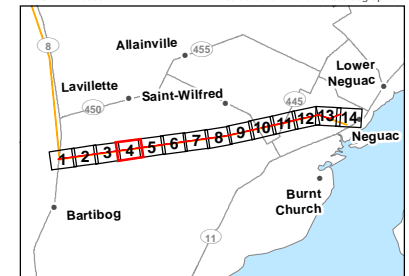
- Mixedwood Treed Swamp
- Interior Forest (After Transmission Line)
- Interior Forest (Before Transmission Line)
- Protected Natural Area
- Terrestrial Local Assessment Area
- Watercourse Crossing Local Assessment Area

Project Components

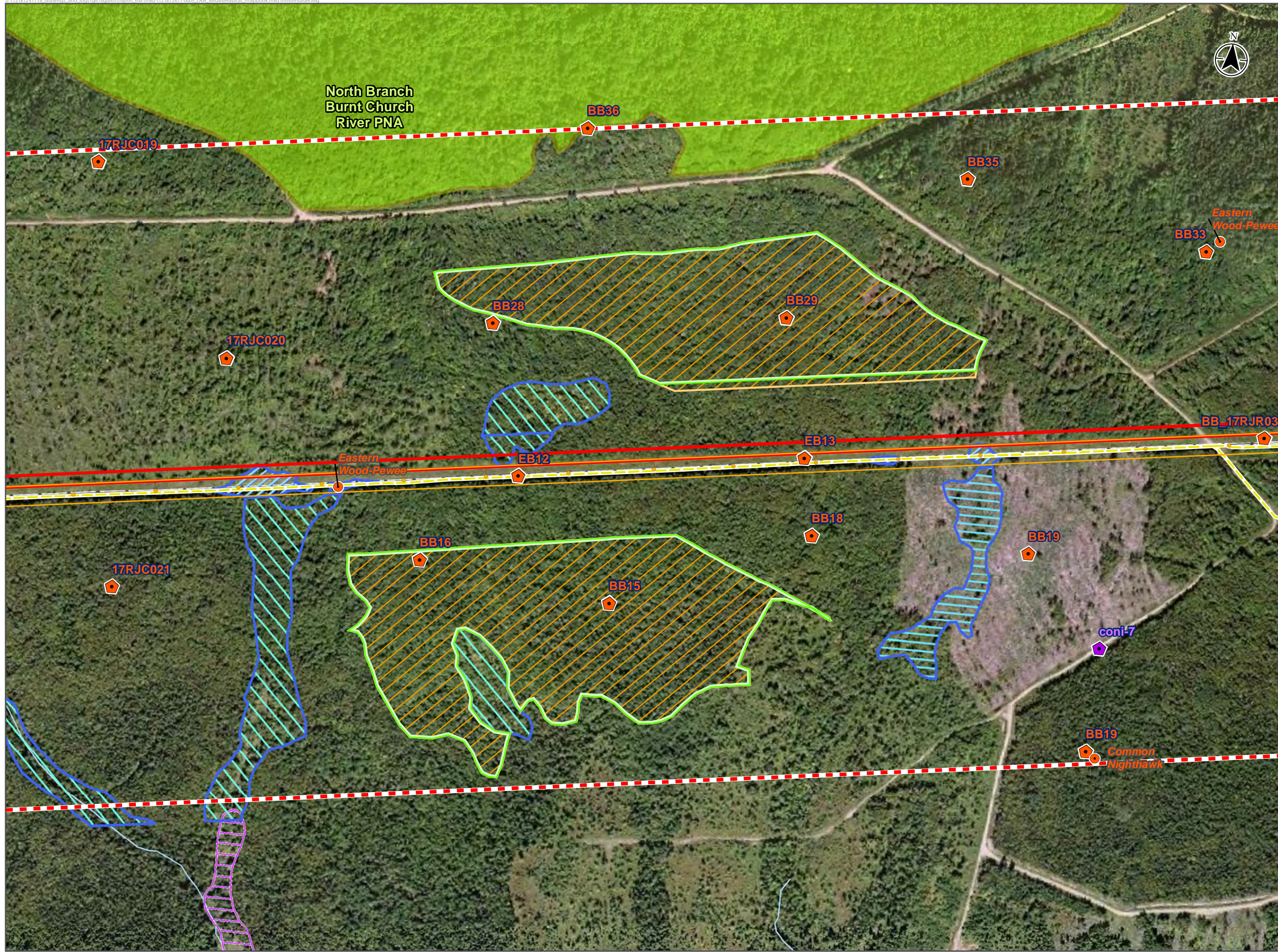
- Existing Pole Structure to be Decommissioned
- Line to be Decommissioned PDA
- Project Development Area (PDA)



121812477-0005 NAD 1983 CSRS New Brunswick Stereographic



Sources: Base data provided by the Government of New Brunswick.
121812477 - NEGUAC TRANSMISSION LINE



Freshwater Fish and Fish Habitat, Vegetation and Wetlands, and Wildlife and Wildlife Habitat Features Observed in the Local Assessment Area

Field Observation of Species at Risk (SAR) and of Conservation Concern (SOCC)

- Bird Observation (SAR)
- Bird Observation (SAR)

SurveyType

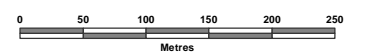
- ⬠ Breeding Bird Point Count Location
- ⬠ Nightjar Point Count Location
- Recreational Trail (ATV & Snowmobile)
- Watercourse

Field Delineated / Desktop Interpreted Wetland

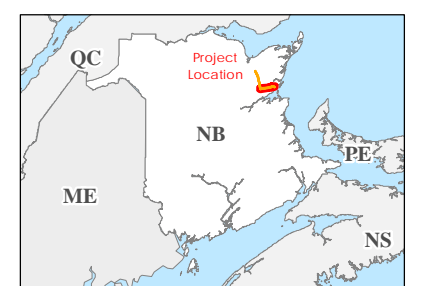
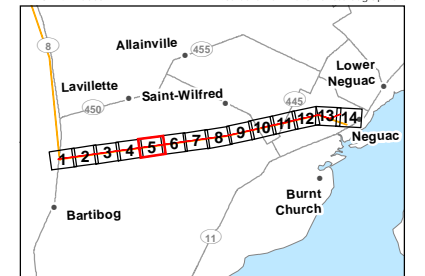
- ▨ Deciduous Treed Swamp
- ▨ Freshwater Marsh
- ▨ Mixedwood Treed Swamp
- ▨ GeoNB-mapped Wetland
- ▨ Interior Forest (After Transmission Line)
- ▨ Interior Forest (Before Transmission Line)
- ▨ Protected Natural Area
- ▨ Terrestrial Local Assessment Area

Project Components

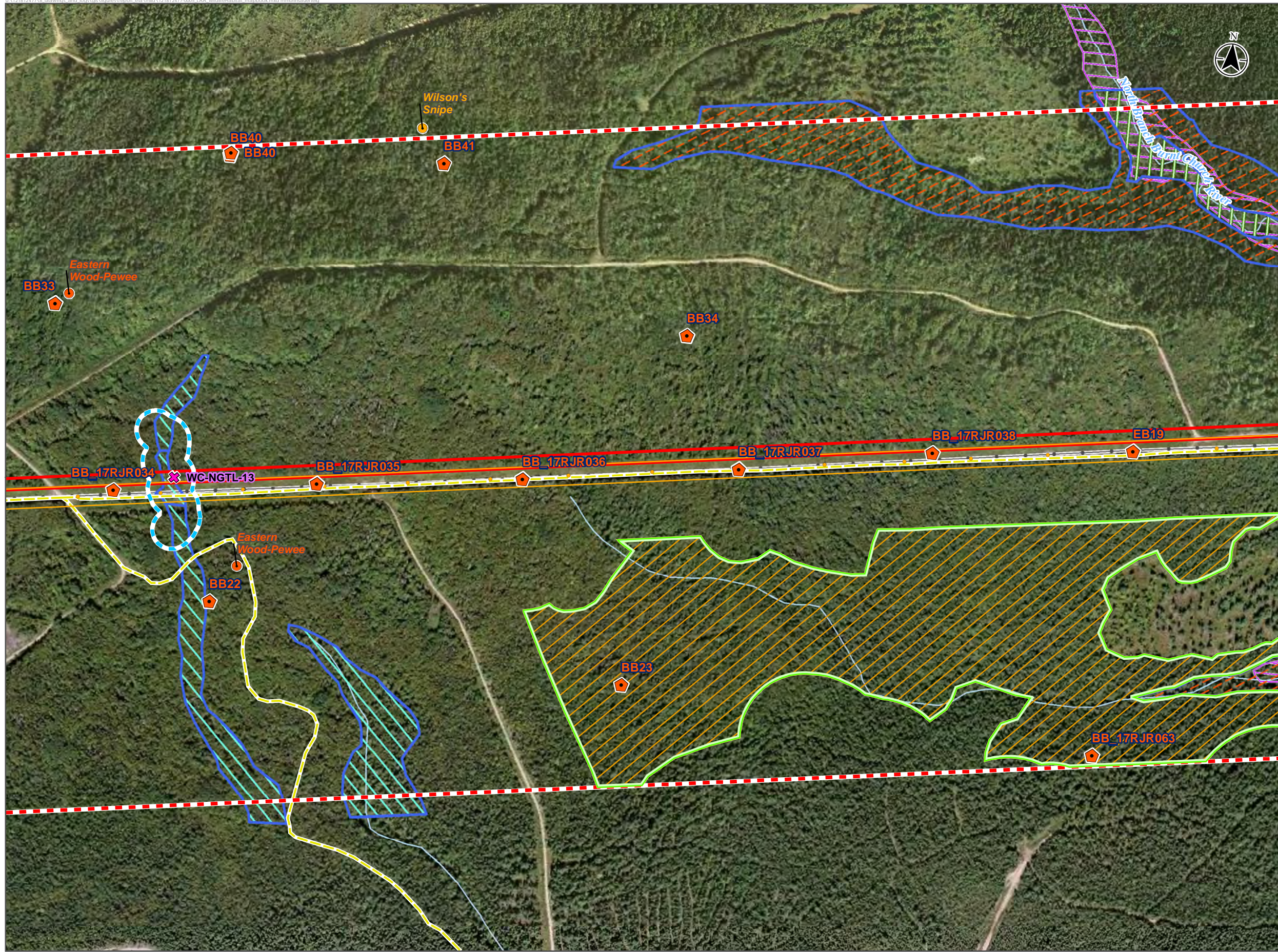
- Existing Pole Structure to be Decommissioned
- ▨ Line to be Decommissioned PDA
- ▨ Project Development Area (PDA)



121812477-0005 NAD 1983 CSRS New Brunswick Stereographic



Sources: Base data provided by the Government of New Brunswick.
121812477 - NEGUAC TRANSMISSION LINE



Freshwater Fish and Fish Habitat, Vegetation and Wetlands, and Wildlife and Wildlife Habitat Features Observed in the Local Assessment Area

Field Observation of Species at Risk (SAR) and of Conservation Concern (SOCC)

- Bird Observation (SAR)
- Bird Observation (SOCC)

SurveyType

- ⬠ Breeding Bird Point Count Location

Watercourse Crossing

- ✖ Phase 1 No Defined Channel/Ephemeral
- Recreational Trail (ATV & Snowmobile)
- Watercourse

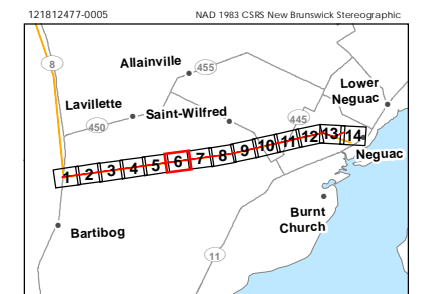
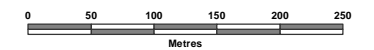
Field Delineated / Desktop Interpreted Wetland

- ▨ Coniferous Treed Swamp
- ▨ Mixedwood Treed Swamp
- ▨ Tall Shrub Swamp

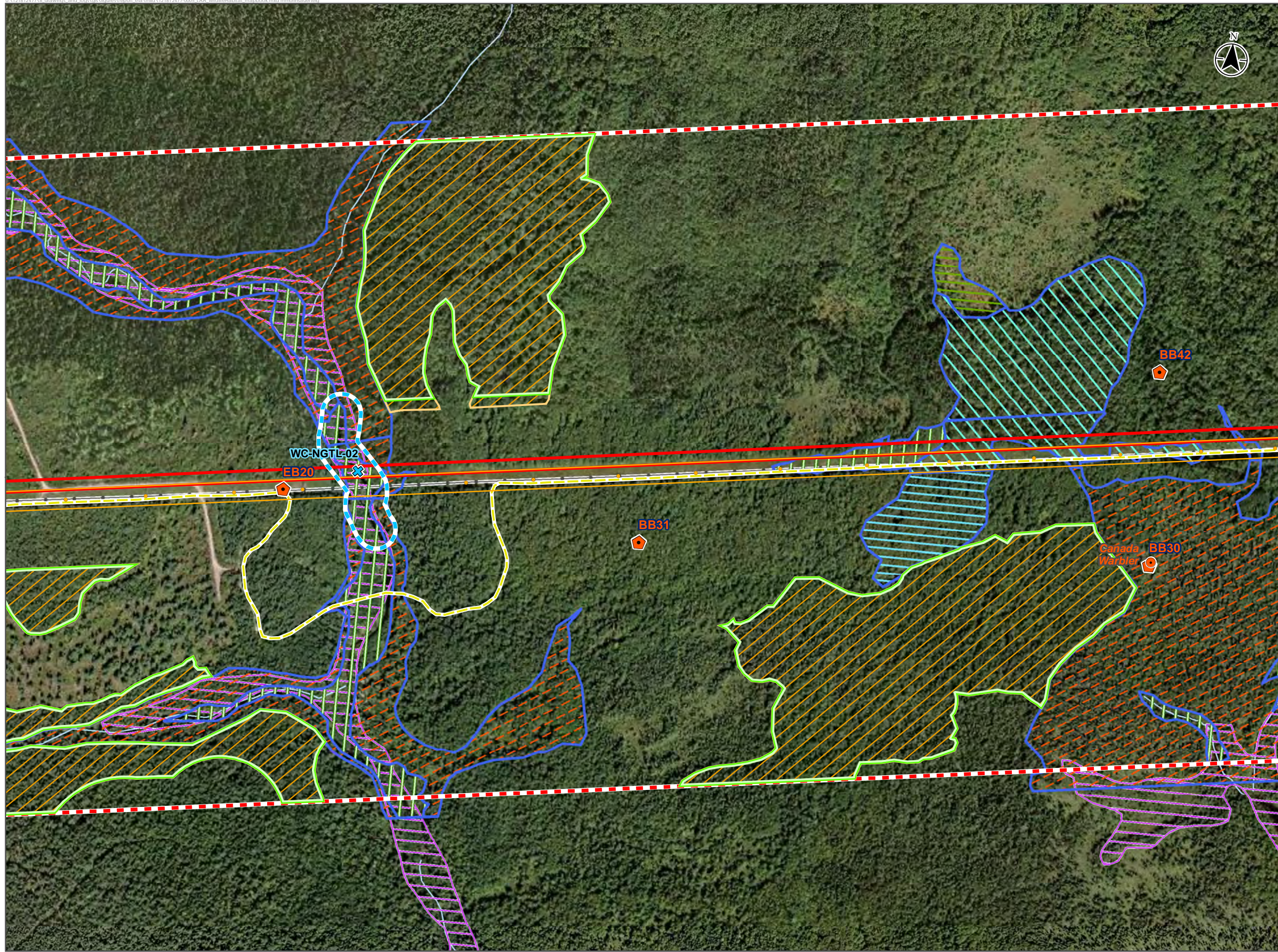
- ▨ GeoNB-mapped Wetland
- ▨ Interior Forest (After Transmission Line)
- ▨ Interior Forest (Before Transmission Line)
- ▨ Terrestrial Local Assessment Area
- ▨ Watercourse Crossing Local Assessment Area

Project Components

- Existing Pole Structure to be Decommissioned
- ▭ Line to be Decommissioned PDA
- ▭ Project Development Area (PDA)



Sources: Base data provided by the Government of New Brunswick.
121812477 - NEGUAC TRANSMISSION LINE



Freshwater Fish and Fish Habitat, Vegetation and Wetlands, and Wildlife and Wildlife Habitat Features Observed in the Local Assessment Area

Field Observation of Species at Risk (SAR) and of Conservation Concern (SOCC)

- Bird Observation (SAR)

SurveyType

- Breeding Bird Point Count Location

Watercourse Crossing

- Phase 1 Watercourse
- Recreational Trail (ATV & Snowmobile)
- Watercourse

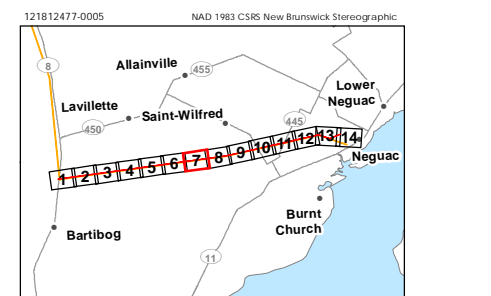
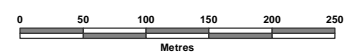
Field Delineated / Desktop Interpreted Wetland

- Coniferous Treed Swamp
- Deciduous Treed Swamp
- Mixedwood Treed Swamp
- Tall Shrub Swamp
- Treed Bog
- GeoNB-mapped Wetland
- Interior Forest (After Transmission Line)
- Interior Forest (Before Transmission Line)

- Terrestrial Local Assessment Area
- Watercourse Crossing Local Assessment Area

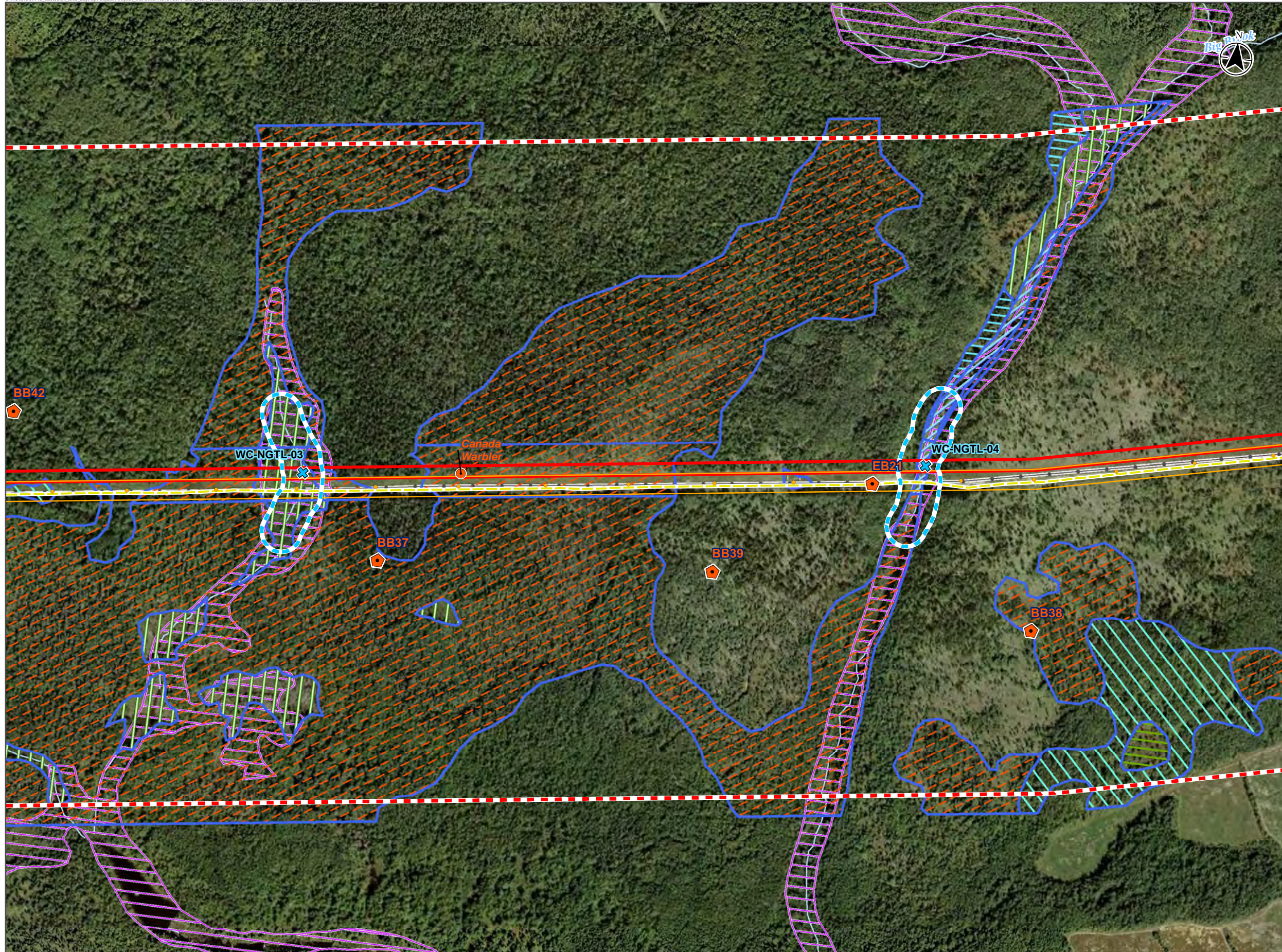
Project Components

- Existing Pole Structure to be Decommissioned
- Line to be Decommissioned PDA
- Project Development Area (PDA)



Sources: Base data provided by the Government of New Brunswick.
121812477 - NEGUAC TRANSMISSION LINE

Freshwater Fish and Fish Habitat, Vegetation and Wetlands, and Wildlife and Wildlife Habitat Features Observed in the Local Assessment Area



Field Observation of Species at Risk (SAR) and of Conservation Concern (SOCC)

- Bird Observation (SAR)

Survey Type

- ⬠ Breeding Bird Point Count Location

Watercourse Crossing

- ⊗ Phase 1 Watercourse
- Recreational Trail (ATV & Snowmobile)
- Watercourse

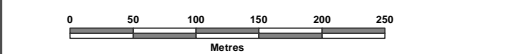
Field Delineated / Desktop Interpreted Wetland

- ▨ Coniferous Treed Swamp
- ▨ Deciduous Treed Swamp
- ▨ Freshwater Marsh
- ▨ Low Shrub Swamp
- ▨ Mixedwood Treed Swamp
- ▨ Tall Shrub Swamp
- ▨ Treed Bog

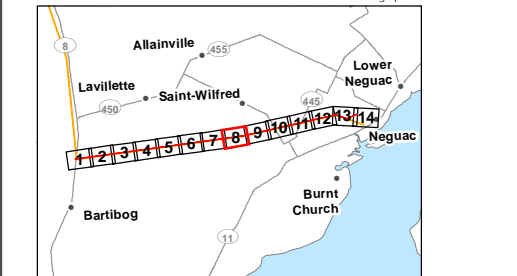
- ▨ GeoNB-mapped Wetland
- ▨ Terrestrial Local Assessment Area
- ▨ Watercourse Crossing Local Assessment Area

Project Components

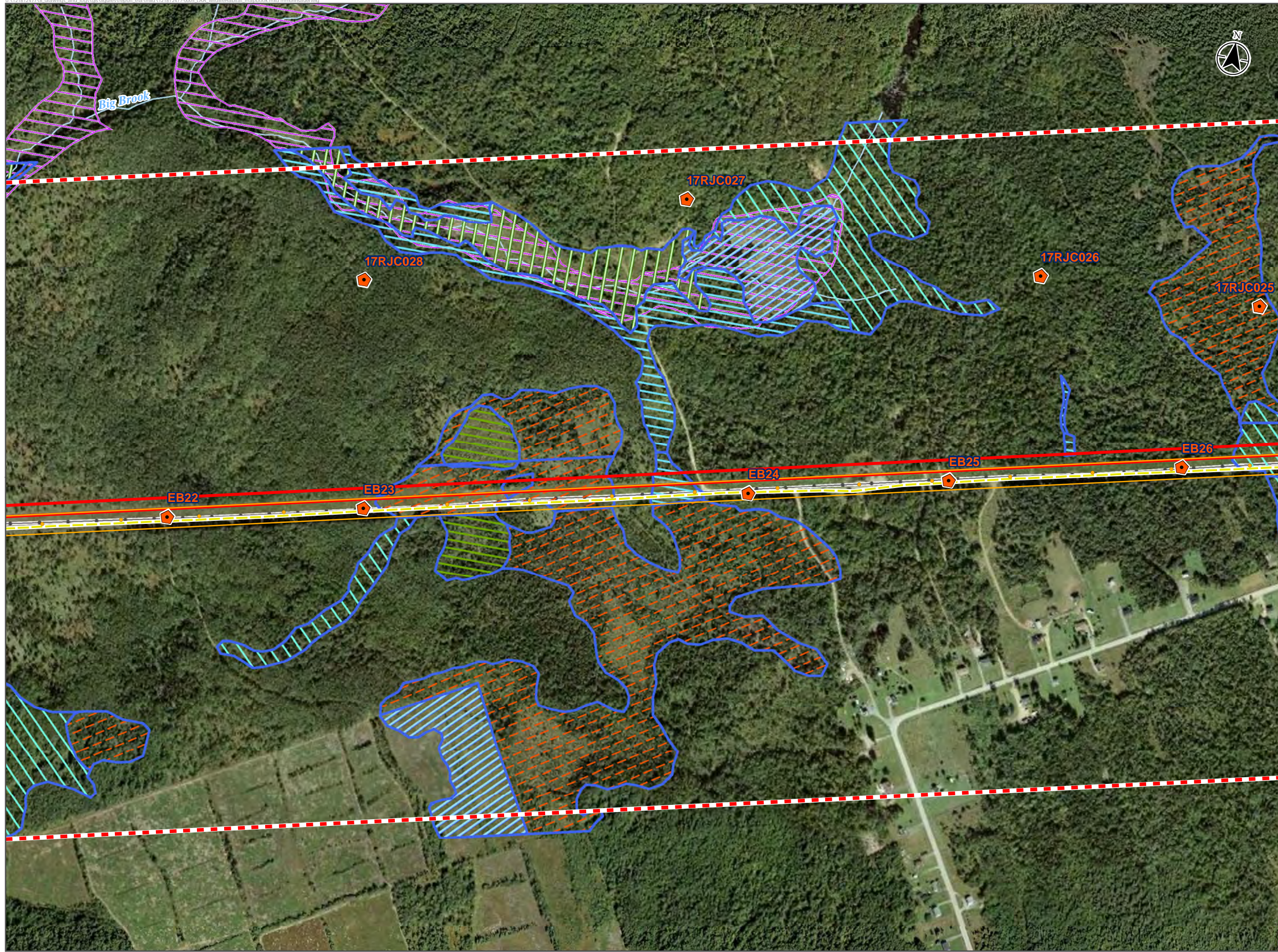
- Existing Pole Structure to be Decommissioned
- ▨ Line to be Decommissioned PDA
- ▨ Project Development Area (PDA)



121812477-0005 NAD 1983 CSRS New Brunswick Stereographic

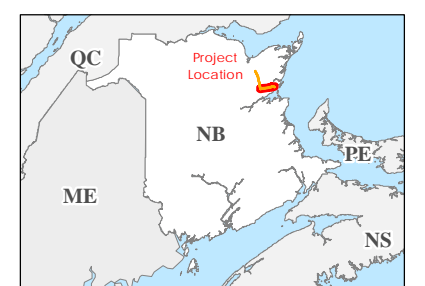
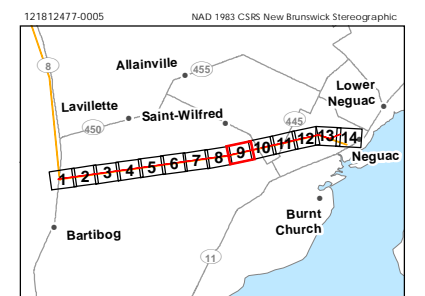
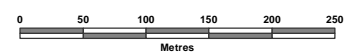


Sources: Base data provided by the Government of New Brunswick.
121812477 - NEGUAC TRANSMISSION LINE

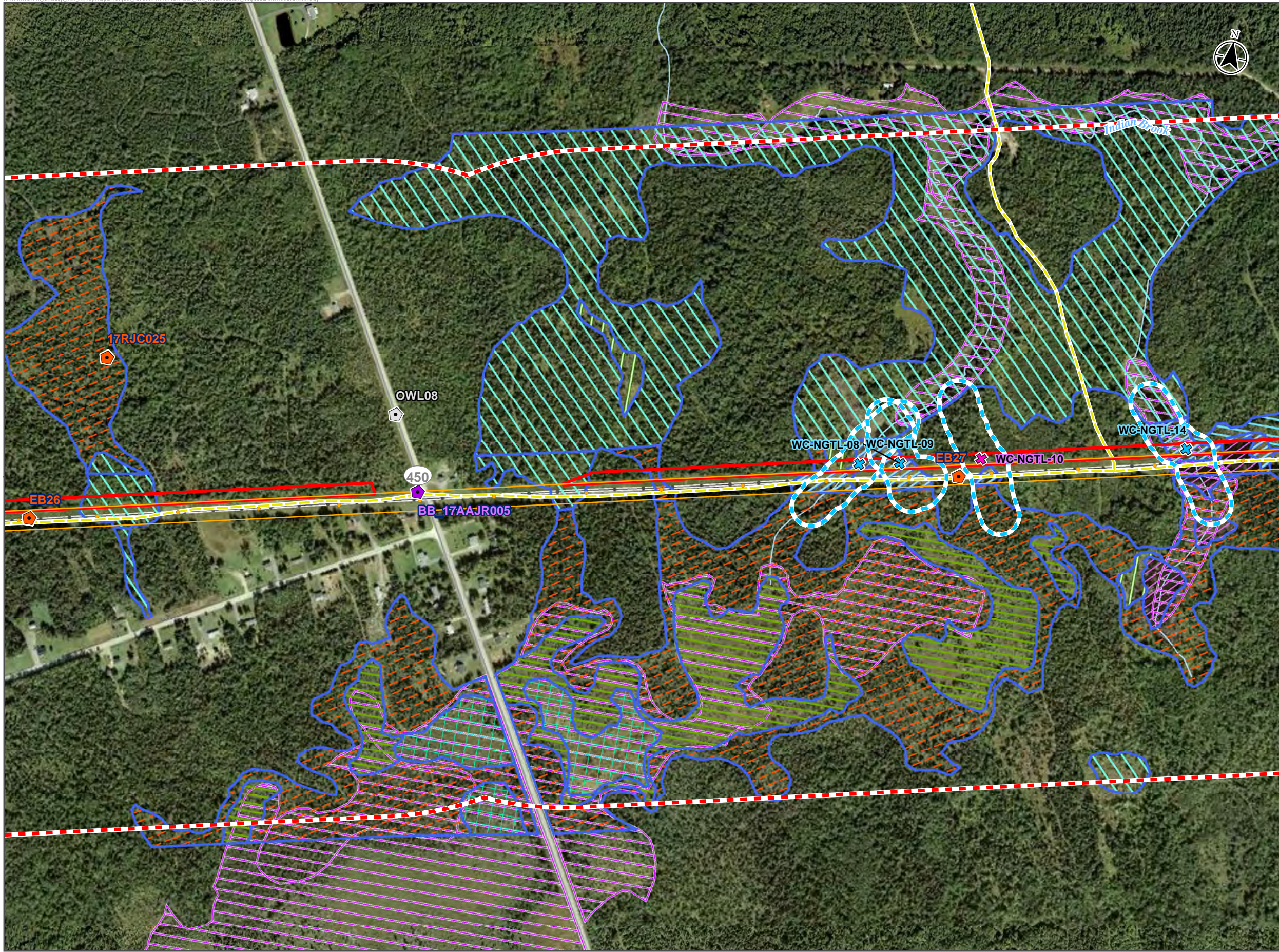


Freshwater Fish and Fish Habitat, Vegetation and Wetlands, and Wildlife and Wildlife Habitat Features Observed in the Local Assessment Area

- SurveyType**
- Breeding Bird Point Count Location
 - Recreational Trail (ATV & Snowmobile)
 - Watercourse
- Field Delineated / Desktop Interpreted Wetland**
- Coniferous Treed Swamp
 - Deciduous Treed Swamp
 - Freshwater Marsh
 - Mixedwood Treed Swamp
 - Tall Shrub Swamp
 - Treed Bog
 - GeoNB-mapped Wetland
 - Terrestrial Local Assessment Area
- Project Components**
- Existing Pole Structure to be Decommissioned
 - Line to be Decommissioned PDA
 - Project Development Area (PDA)

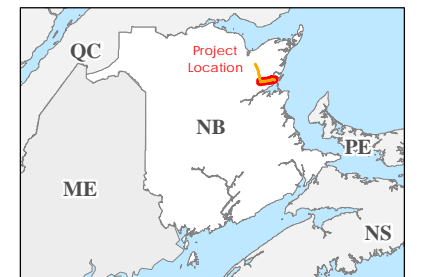
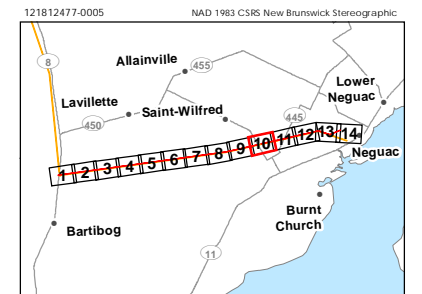
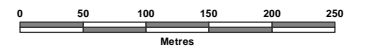


Sources: Base data provided by the Government of New Brunswick.
121812477 - NEGUAC TRANSMISSION LINE

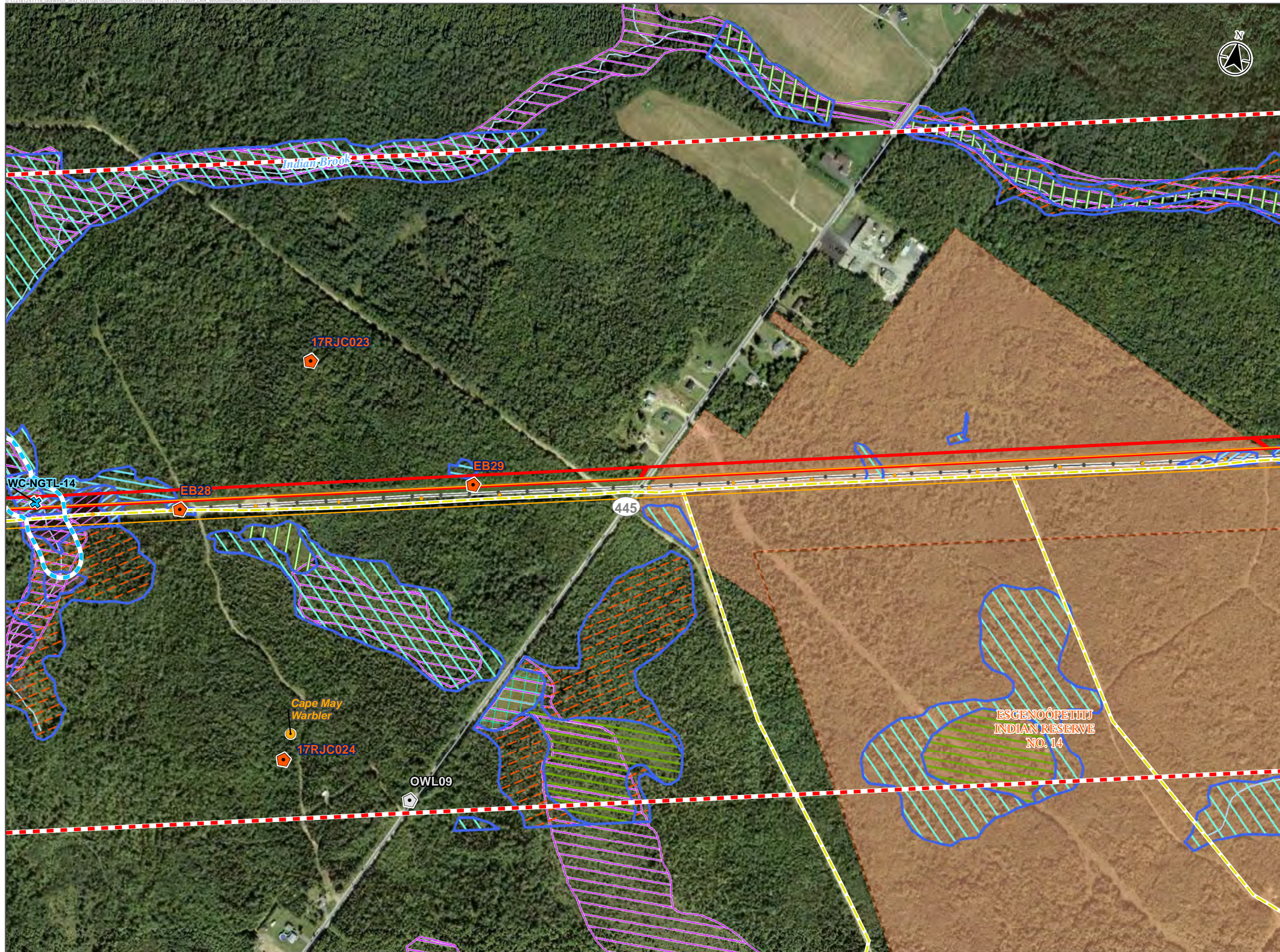


Freshwater Fish and Fish Habitat, Vegetation and Wetlands, and Wildlife and Wildlife Habitat Features Observed in the Local Assessment Area

- SurveyType**
- Breeding Bird Point Count Location
 - Nightjar Point Count Location
 - Owl Point Count Location
- Watercourse Crossing**
- Phase 1 No Defined Channel/Ephemeral
 - Phase 1 Watercourse
 - Recreational Trail (ATV & Snowmobile)
 - Watercourse
- Field Delineated / Desktop Interpreted Wetland**
- Bog
 - Coniferous Treed Swamp
 - Deciduous Treed Swamp
 - Freshwater Marsh
 - Mixedwood Treed Swamp
 - Shallow Water Wetland
 - Tall Shrub Swamp
 - Treed Bog
 - GeoNB-mapped Wetland
 - Terrestrial Local Assessment Area
 - Watercourse Crossing Local Assessment Area
- Project Components**
- Existing Pole Structure to be Decommissioned
 - Line to be Decommissioned PDA
 - Project Development Area (PDA)



Sources: Base data provided by the Government of New Brunswick.
121812477 - NEGUAC TRANSMISSION LINE



Freshwater Fish and Fish Habitat, Vegetation and Wetlands, and Wildlife and Wildlife Habitat Features Observed in the Local Assessment Area

Field Observation of Species at Risk (SAR) and of Conservation Concern (SOCC)

- Bird Observation (SOCC)
- SurveyType
 - Breeding Bird Point Count Location
 - Owl Point Count Location
- Watercourse Crossing
 - Phase 1 Watercourse
 - Recreational Trail (ATV & Snowmobile)
 - Watercourse

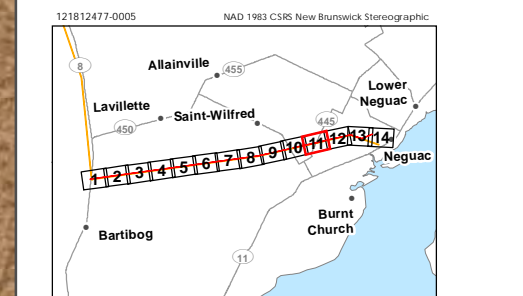
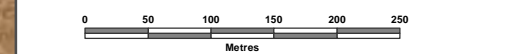
Field Delineated / Desktop Interpreted Wetland

- Bog
- Coniferous Treed Swamp
- Deciduous Treed Swamp
- Freshwater Marsh
- Mixedwood Treed Swamp
- Shallow Water Wetland
- Tall Shrub Swamp
- Treed Bog

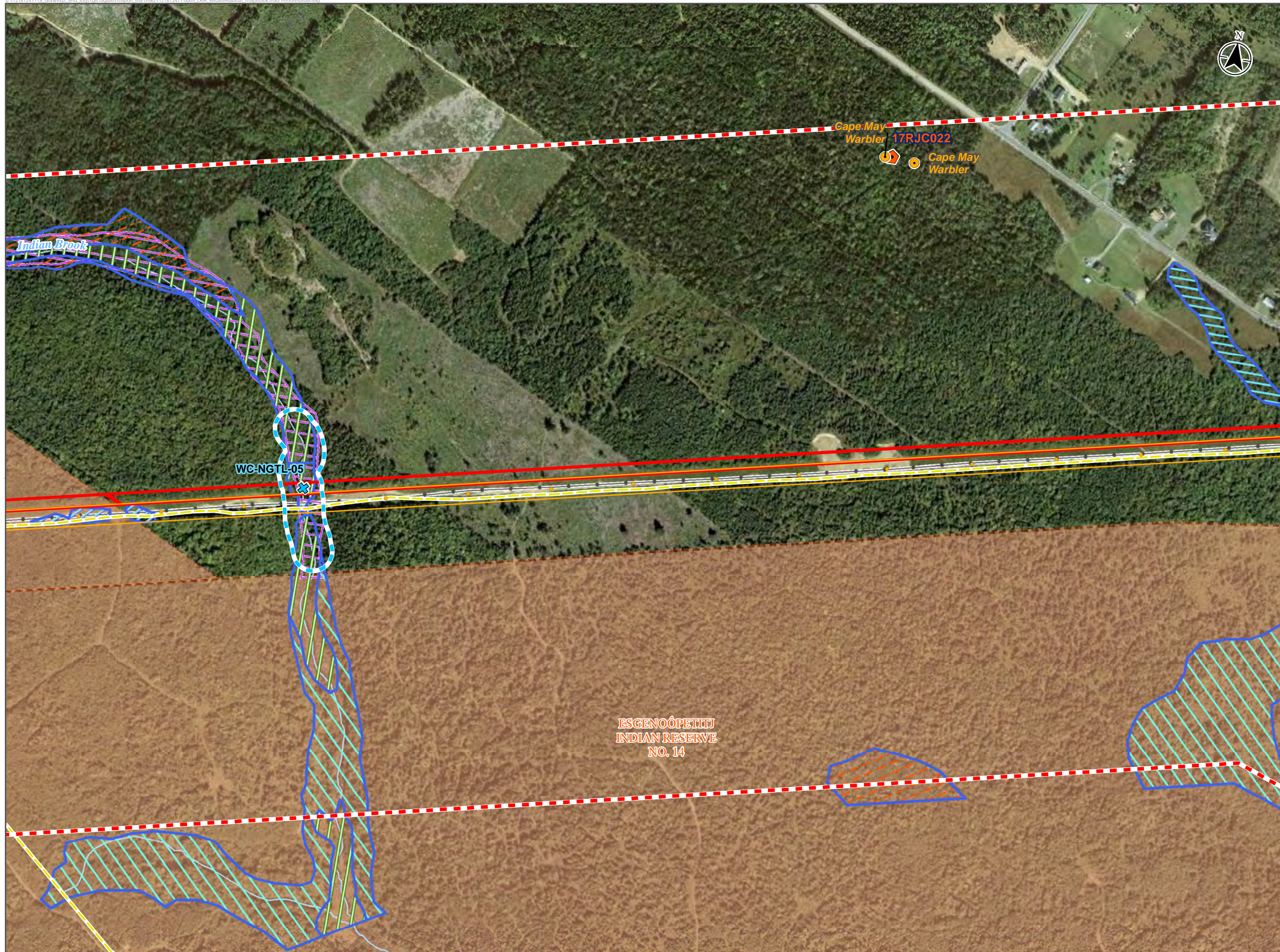
- GeoNB-mapped Wetland
- Terrestrial Local Assessment Area
- Watercourse Crossing Local Assessment Area

Project Components

- Existing Pole Structure to be Decommissioned
- Line to be Decommissioned PDA
- Project Development Area (PDA)
- Indigenous Community



Sources: Base data provided by the Government of New Brunswick.
121812477 - NEGUAC TRANSMISSION LINE



Freshwater Fish and Fish Habitat, Vegetation and Wetlands, and Wildlife and Wildlife Habitat Features Observed in the Local Assessment Area

Field Observation of Species at Risk (SAR) and of Conservation Concern (SOCC)

● Bird Observation (SOCC)

Survey Type

📍 Breeding Bird Point Count Location

Watercourse Crossing

✂ Phase 1 Watercourse

— Recreational Trail (ATV & Snowmobile)

— Watercourse

Field Delineated / Desktop Interpreted Wetland

▨ Coniferous Treed Swamp

▨ Deciduous Treed Swamp

▨ Freshwater Marsh

▨ Mixedwood Treed Swamp

▨ Tall Shrub Swamp

▨ GeoNB-mapped Wetland

▨ Terrestrial Local Assessment Area

▨ Watercourse Crossing Local Assessment Area

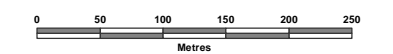
Project Components

● Existing Pole Structure to be Decommissioned

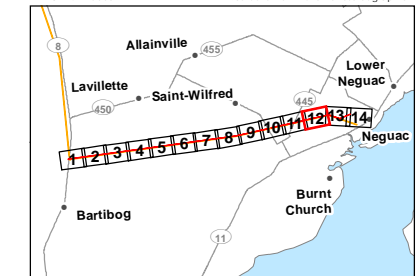
▨ Line to be Decommissioned PDA

▨ Project Development Area (PDA)

▨ Indigenous Community

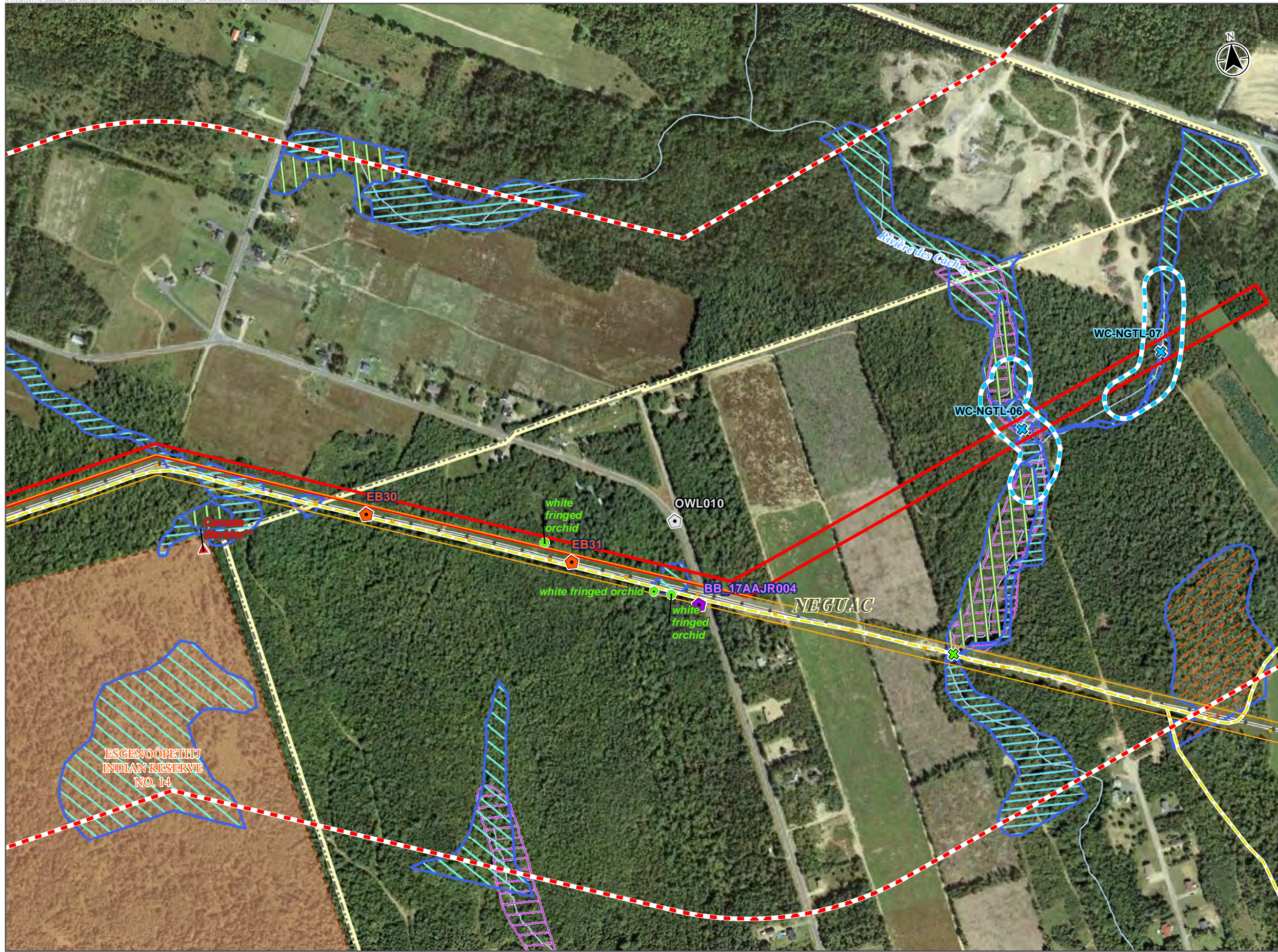


121812477-0005 NAD 1983 CSRS New Brunswick Stereographic



Sources: Base data provided by the Government of New Brunswick.

121812477 - NEGUAC TRANSMISSION LINE



Freshwater Fish and Fish Habitat, Vegetation and Wetlands, and Wildlife and Wildlife Habitat Features Observed in the Local Assessment Area

Species of Conservation Concern (SOCC) and Species at Risk (SAR) from Atlantic Canada Conservation Data Centre

▲ Bird Observation (SAR)

Field Observation of Species at Risk (SAR) and of Conservation Concern (SOCC)

● Vascular Plant (SOCC)

SurveyType

◻ Breeding Bird Point Count Location

◻ Nightjar Point Count Location

◻ Owl Point Count Location

Watercourse Crossing

✕ Phase 1 Watercourse

✕ Phase 2 Mapped Watercourse

— Recreational Trail (ATV & Snowmobile)

— Watercourse

Field Delineated / Desktop Interpreted Wetland

▨ Coniferous Treed Swamp

▨ Deciduous Treed Swamp

▨ Freshwater Marsh

▨ Mixedwood Treed Swamp

▨ Tall Shrub Swamp

▨ GeoNB-mapped Wetland

▨ Terrestrial Local Assessment Area

▨ Watercourse Crossing Local Assessment Area

Project Components

● Existing Pole Structure to be Decommissioned

▨ Line to be Decommissioned PDA

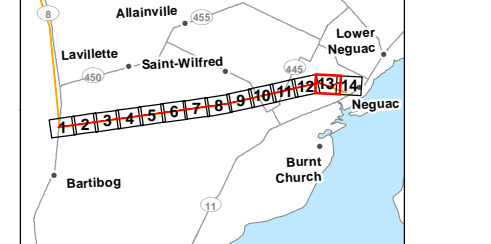
▨ Project Development Area (PDA)

▨ Indigenous Community

▨ Municipal Area

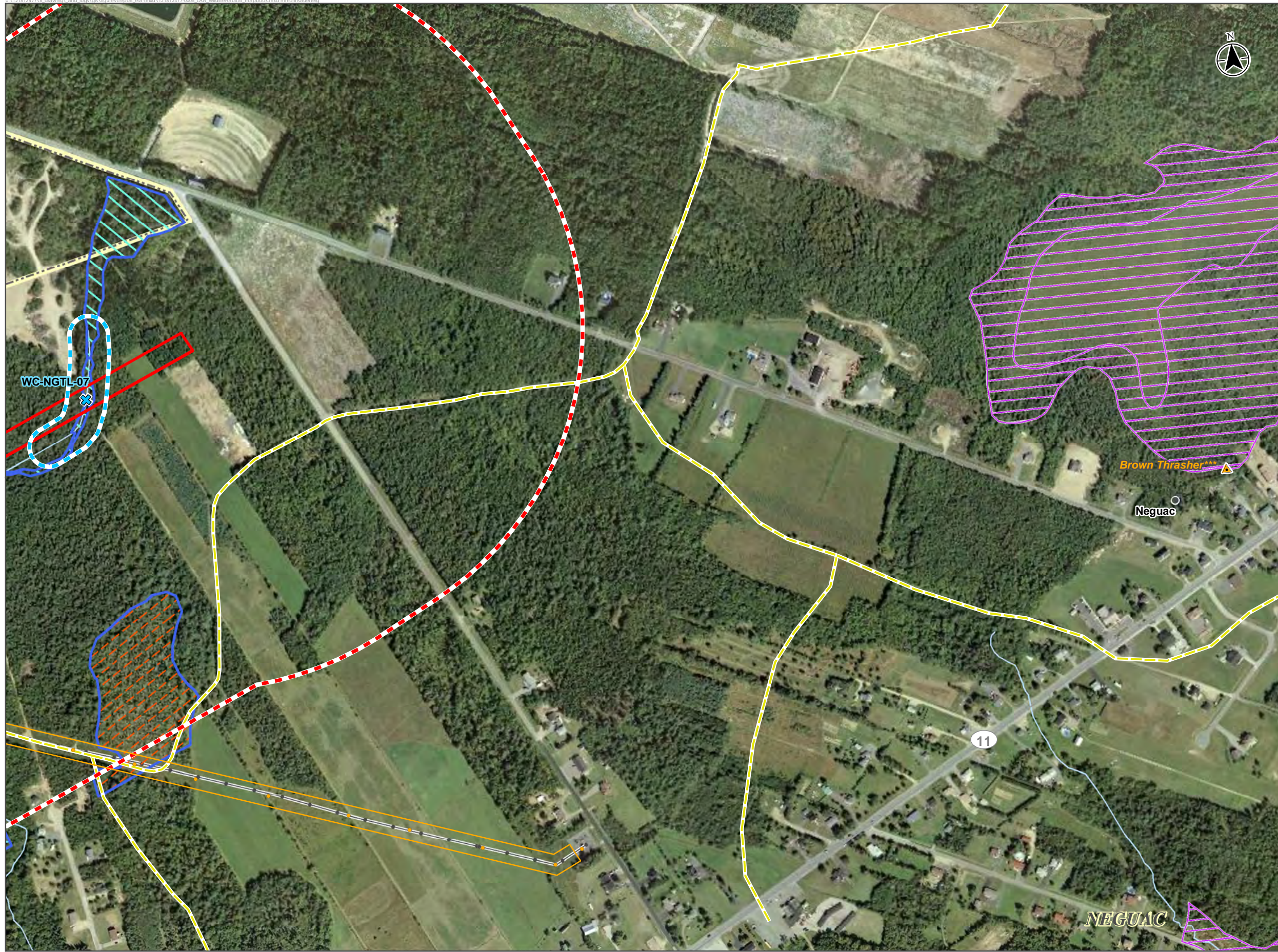
Metres 150 200 250

121812477-0005 NAD 1983 CSRS New Brunswick Stereographic



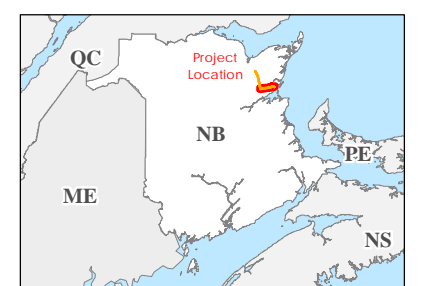
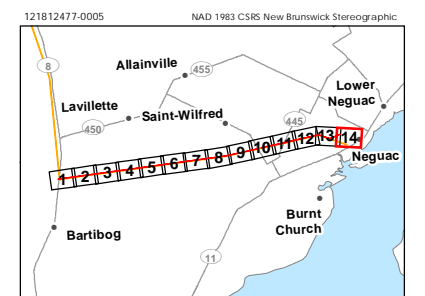
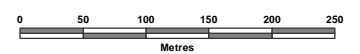
Sources: Base data provided by the Government of New Brunswick.

121812477 - NEGUAC TRANSMISSION LINE



Freshwater Fish and Fish Habitat, Vegetation and Wetlands, and Wildlife and Wildlife Habitat Features Observed in the Local Assessment Area

- Species of Conservation Concern (SOCC) and Species at Risk (SAR) from Atlantic Canada Conservation Data Centre**
- ▲ Bird Observation (SOCC)
- Watercourse Crossing**
- ✕ Phase 1 Watercourse
 - Recreational Trail (ATV & Snowmobile)
 - Watercourse
- Field Delineated / Desktop Interpreted Wetland**
- ▨ Coniferous Treed Swamp
 - ▨ Deciduous Treed Swamp
 - ▨ Mixedwood Treed Swamp
 - ▨ GeoNB-mapped Wetland
 - ▨ Terrestrial Local Assessment Area
 - ▨ Watercourse Crossing Local Assessment Area
- Project Components**
- Existing Pole Structure to be Decommissioned
 - ▨ Line to be Decommissioned PDA
 - ▨ Project Development Area (PDA)
 - Major Road
 - ▨ Municipal Area



Sources: Base data provided by the Government of New Brunswick.
121812477 - NEGUAC TRANSMISSION LINE

