

Appendix I

FIRST NATION PROJECT PRESENTATION DOCUMENT



February 24, 2017

Chief
First Nation

Email

Re : Scotts Canada Peatland 524 – Tabusintac expansion project

Dear Chief,

As part of its engagement process Scotts Canada Ltd. (Scotts) wishes to inform your community about its project to expand its existing peat harvesting operations at peatland 524 located in Tabusintac and that was previously developed by Heveco (see attached map).

Scotts Canada

Scotts is a manufacturer of peat moss, grower mixes and retail products for the Canadian market. Our company is committed to conducting its business according to high legal and ethical standards and doing the right thing is at our core. Every day, we become a better business and organization by listening to those around us. We particularly value the viewpoints of those who care about the environment. From innovating products to planning community involvement programs, we team up with experts and organizations that can help us be more effective in protecting the environment, educating others on being good stewards of the earth and improving the communities in which we live and work. Scotts has the Veriflora certification that demonstrates leadership in environmental protection, social responsibility, and quality performance. For example, all the operations from field opening to restoration are linked and planned throughout the years within an integrated development plan. Opening areas are frequently used to restore fields in closure.

The project

Scotts has peat harvesting sites and mixing plants where it processes peat. It has historically been filling its needs by purchasing sphagnum peat moss from many peat producers in Canada and the company is always looking for additional procurement coming from smaller local peat harvesters in the region to face the demand. But that cannot guarantee a secure supply of peat and in an effort of vertical integration, the company's goal is to increase its own peat supply internally explaining the need of increasing production capacity in Tabusintac to meet the growing demand for its products.

Peatland 524 offers a substantial potential for a production increase. The site is a large peatland that still has extended natural areas where new peat fields covering 310 ha can be developed. Moreover, peatland 524 is strategically located close to Highway 11 and Highway 8 that provides an easy access for shipping. The project also includes the conservation of substantial sections covering 654 ha within the lease 9 and Scotts private land.



The process

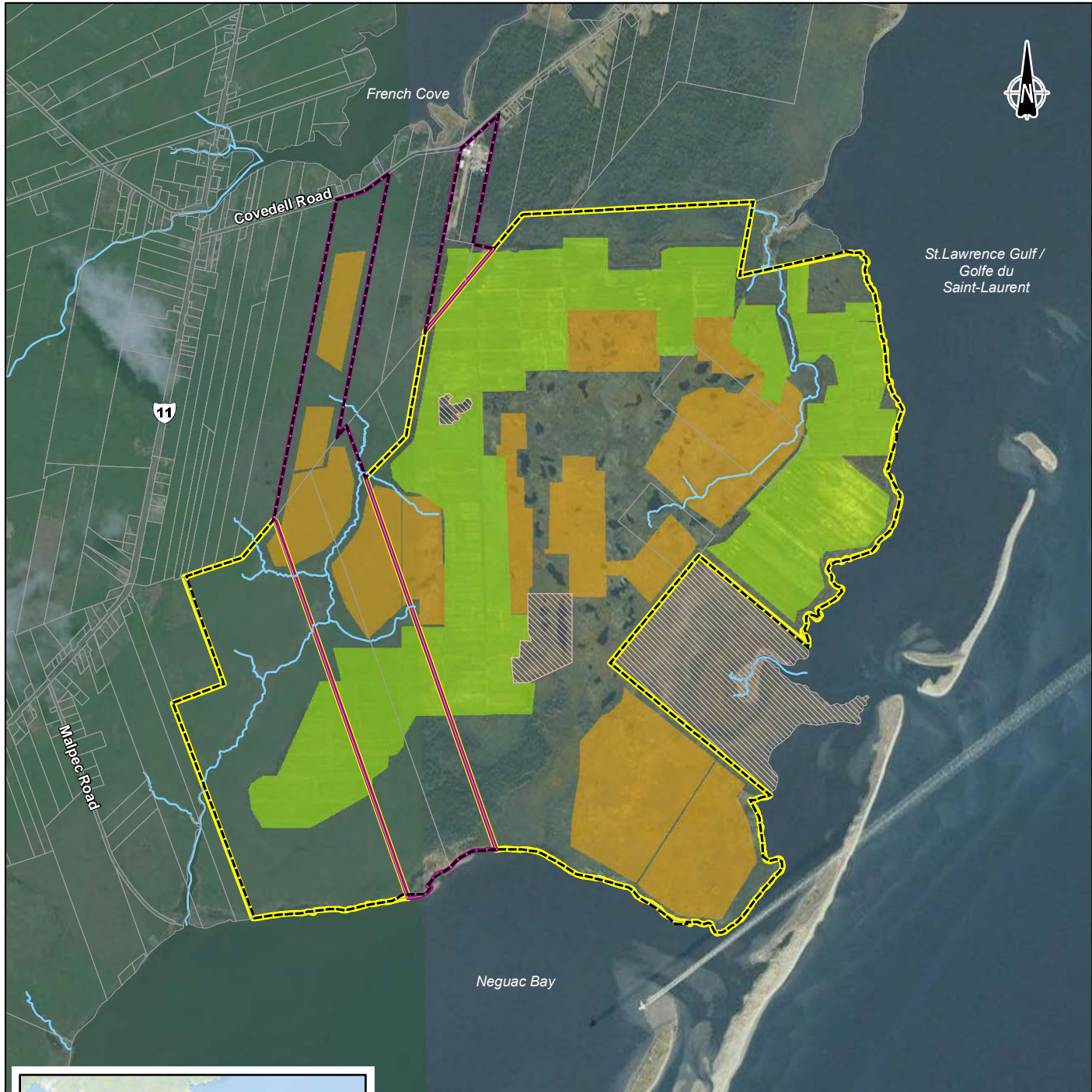
Scotts intends to develop peatland 524 in accordance with the standards and practices of peatland development of the industry and is also committed to meet all the requirements and obligations under the New Brunswick regulations. The company has engaged in the environmental authorization process with the New Brunswick Government. It has contracted WSP to conduct an Environmental Impact Assessment (EIA) and prepare a Registration document for review of its project by the Technical Review Committee. The goal is to complete the EIA and submit the Registration form in the spring 2017. The company would like to integrate the traditional ecological knowledge into the EIA and intends to collaborate with the Mi'kmaq First Nation and the Department of Energy and Resource Development. From a practical point of view, it is looking for sources of information on traditional land and resource use in the area of the peatland.

At this point, Scotts wants to inform and is seeking comments from the First nation communities about its project. Upon request, Scotts is also willing to meet with the communities to present its project.

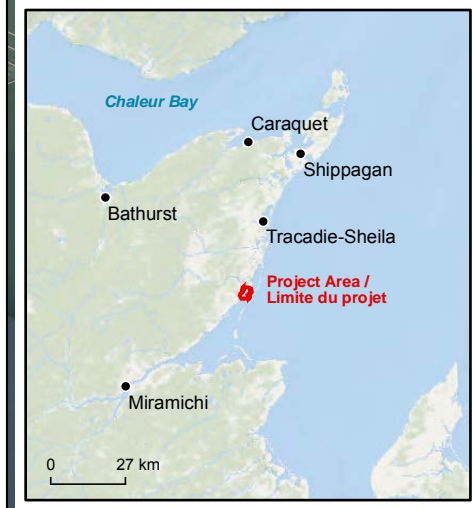
For further information we invite you to contact M. Francois Quinty, project manager from WSP Canada Ltd. who is in charge of the environmental impact assessment at 418-887-5043 or by email at francois.quinty@wspgroup.com.

Yours truly,

Serge Losier
Regional Operational Director
Scotts Canada Ltd



St. Lawrence Gulf /
Golfe du
Saint-Laurent



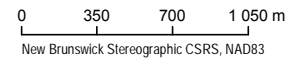
0 27 km

- Proposed expansion / Expansion proposée
- Current operation / Secteur développé
- Protected area / Zone protégée
- Scotts property / Propriété de Scotts
- Lease 9 / Bail 9
- River / Cours d'eau
- Parcel limit / Limite de lot
- Project Area / Limite du projet



Peatland 524 Expansion Project /
Projet d'expansion de la tourbière 524

**Project Location /
Localisation du projet**



Sources :
• GeoNB (SNB)
• World Imagery, 2010
• World Ocean Base

File / Fichier : 161_02246_CP_c1_loc_wspq_170207.mxd

February / Février 2017



