



Ref.: 161-12837

September 16, 2016

Bill Borland, Director  
Orion Management  
Ashburn Place  
479 Rothesay Ave  
Saint John, NB E2L 4G7  
506 650-5557

Via email: [wborland@omci.ca](mailto:wborland@omci.ca)

**Subject: Rare Plant Survey at the Crossing, Saint John, New Brunswick  
PIDs 00432203, 55100325, 55003222, 55029074, 00296673,  
00053025, 00052965, 00053017, 55155378, 00357327, 00297143,  
00297895, 00418160, 55189385. – DRAFT Report**

Dear Mr. Borland

## 1 INTRODUCTION

WSP conducted a rare plant survey on the wetland habitat as shown in the attached Figures (Appendix A) on September 9, 2016. The rare plant survey was conducted by Mr. Theo Popma, a New Brunswick rare plant botanical specialist. Approximately 8 KM of survey track was completed throughout the various PIDs (00432203, 55100325, 55003222, 55029074, 00296673, 00053025, 00052965, 00053017, 55155378, 00357327, 00297143, 00297895, 00418160, 55189385) for this survey (See Appendix B). The weather on September 9 was sunny and clear. The habitats sampled included immature hardwood stands, mature mixed woods, coniferous dominated treed swamps, pasture-like areas and disturbed areas.

## 2 RARE PLANT SURVEY RESULTS

One (1) rare or uncommon vascular species was identified during botanical surveys. The boreal aster (*Symphotrichum boreal*) was observed at three locations (see Appendix B). The plant was found in association with the base of cedar (*Thuja occidentalis*) slopes and were scattered frequently in clearings in the Cedar-dominated swamp with Larch (*Larix laricina*) and Spruce (*Picea* spp) with *Carex cryptolepis*, *Maianthemum trifolium* and *Rubus pubescens*. *C. cryptolepis* is listed as S4 (Secure) by the ACCDC (see ACCDC Report, Appendix C). All remaining plants observed during the survey were S4 to S5 (Secure or Common). A complete plant list is included as Appendix D.

Cedar swamps do have some potential to harbor rare plants in New Brunswick and the level of the survey covered all potential high probability habitats.



### **3 CLOSURE**

WSP can provide a full plant list and basic habitat types if this information is deemed necessary. If you have any questions or comments, please do not hesitate to ask.

Yours truly,

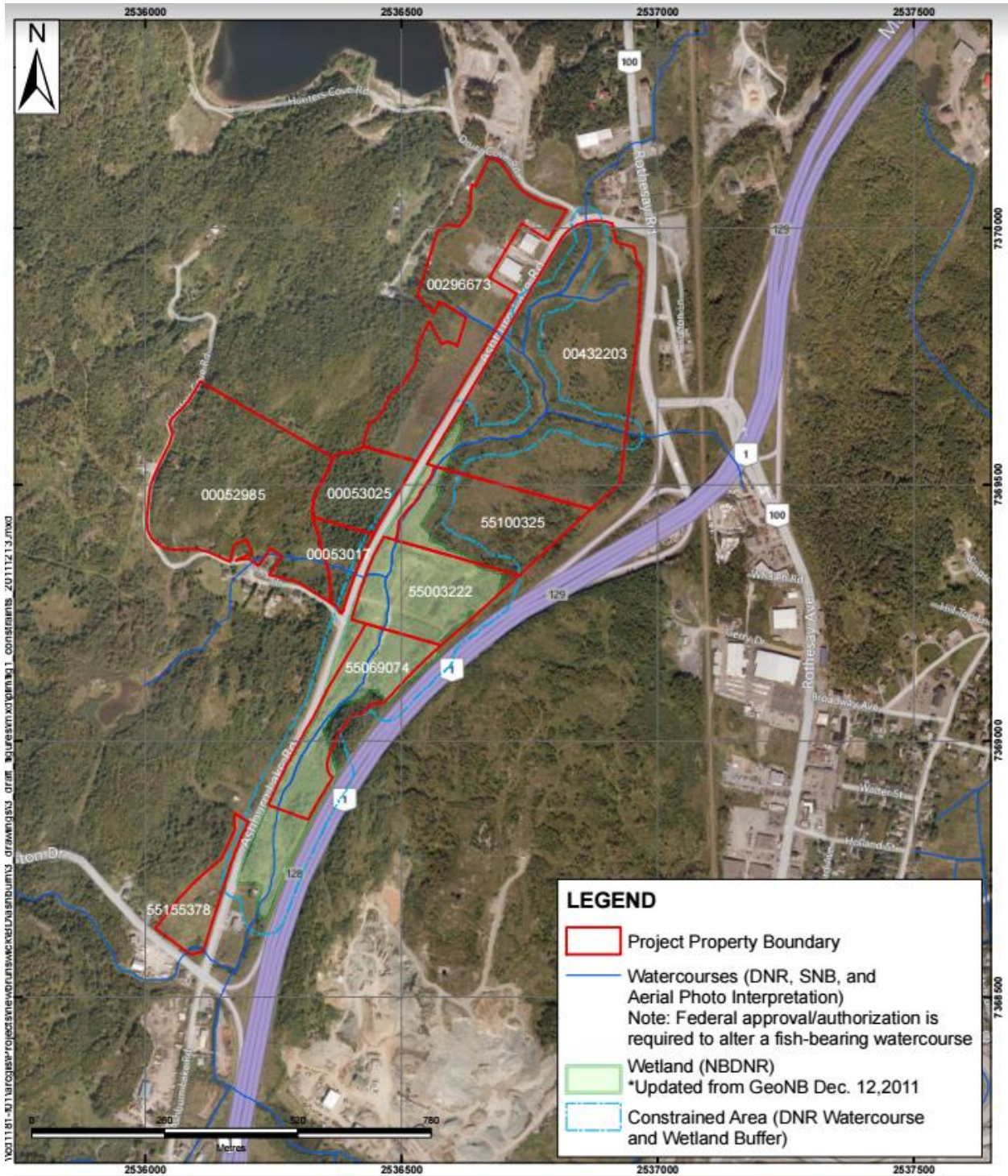
A handwritten signature in blue ink that reads "Virgil D. Grecian".

Virgil D. Grecian, M.Sc.  
Senior Biologist

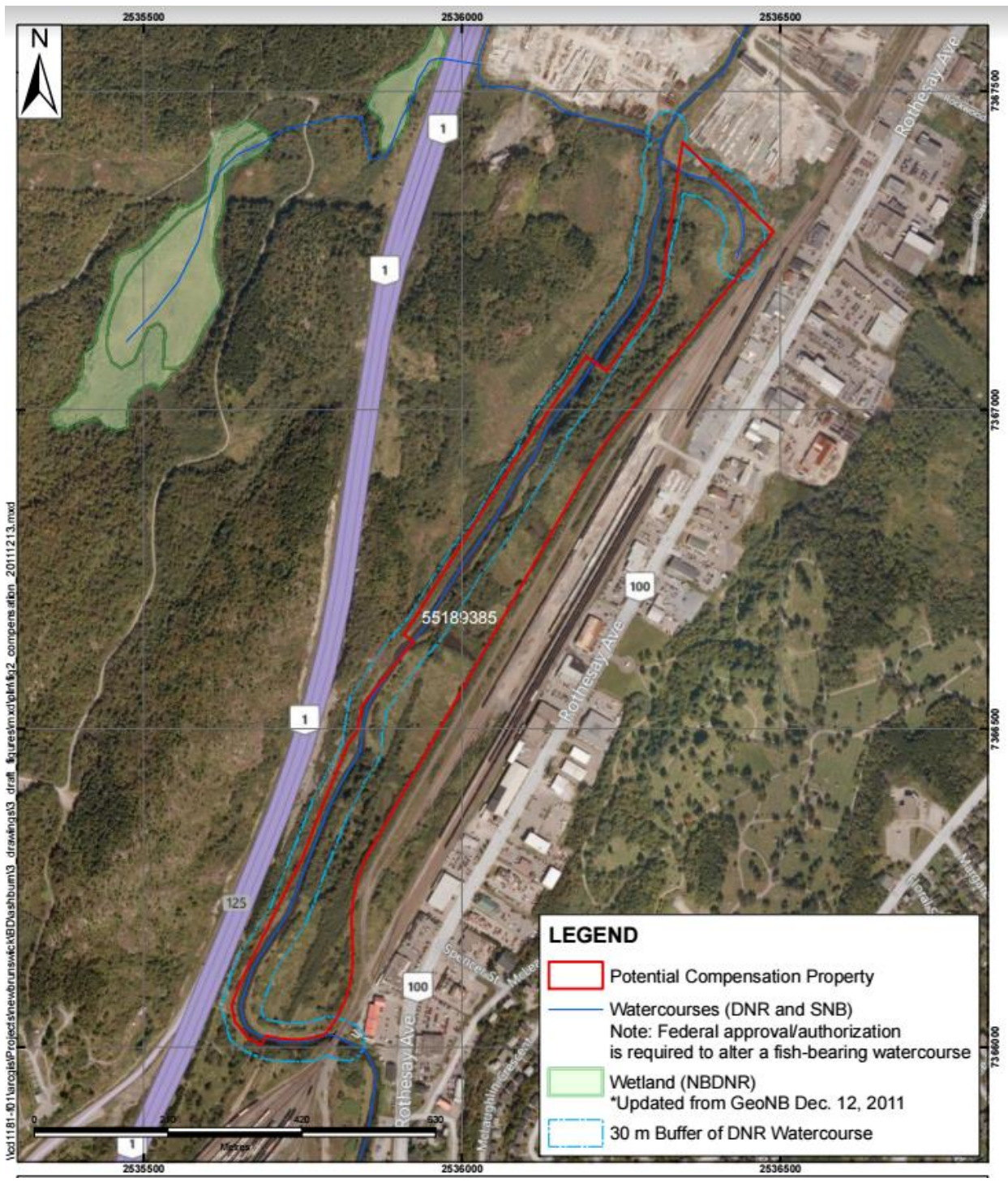
Telephone: (506) 857-1675  
Fax: (506) 857-1679  
Email: [virgil.grecian@wspgroup.com](mailto:virgil.grecian@wspgroup.com)

# Appendix A

**FIGURE 1 - SITE MAP – SURVEY LOCATIONS**







\\ed1181-01\arcgis\Projects\newbrunswick\ABD\ashburn3\_drawing3\_draft\_#ures\mxd\pln\#2\_compensation\_20111213.mxd

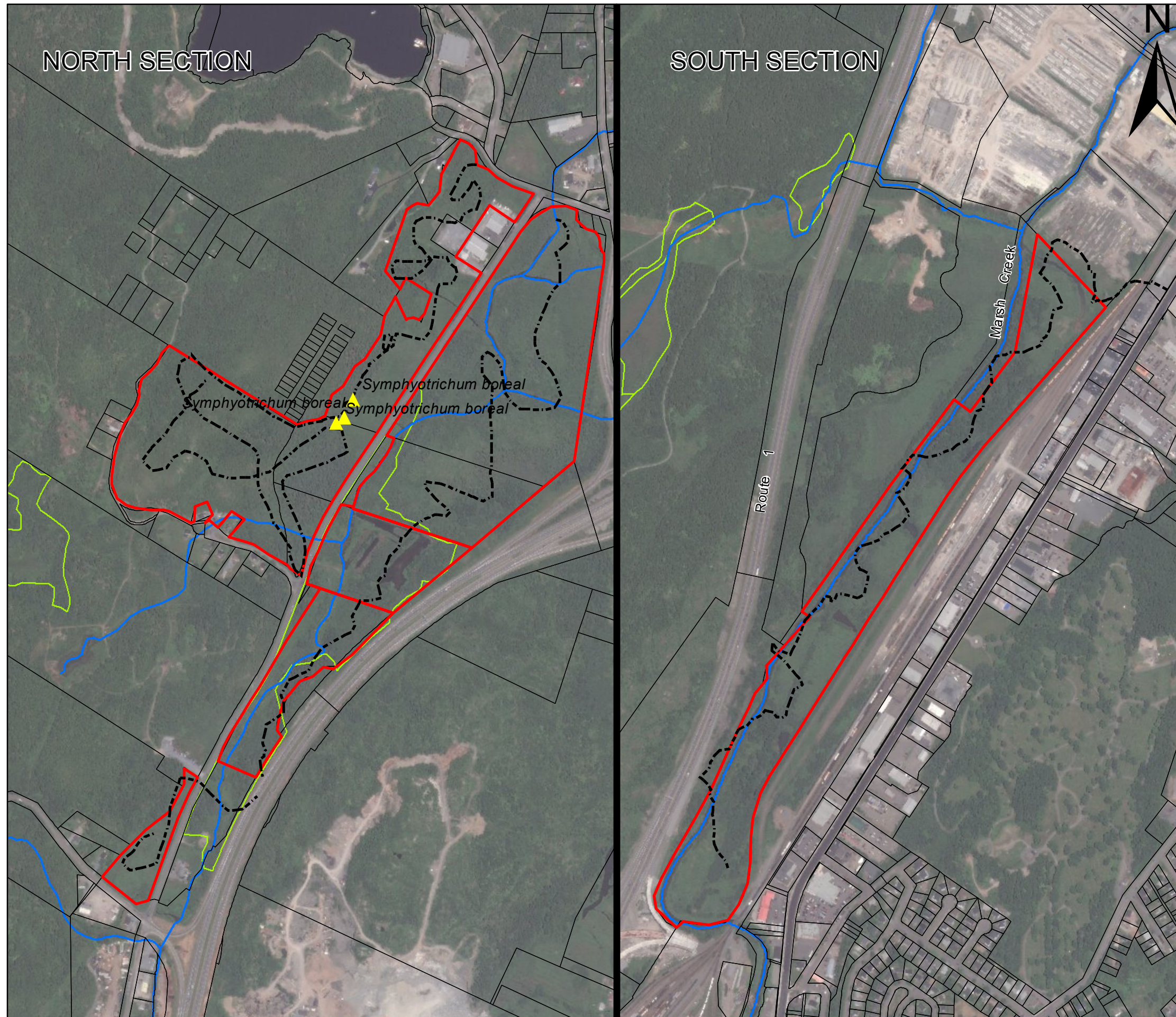
**LEGEND**

- Potential Compensation Property
- Watercourses (DNR and SNB)  
Note: Federal approval/authorization is required to alter a fish-bearing watercourse
- Wetland (NBDNR)  
\*Updated from GeoNB Dec. 12, 2011
- 30 m Buffer of DNR Watercourse

# Appendix B

**RARE PLANT SURVEY RESULTS**





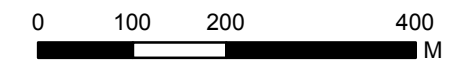
### Legend

- ▲ SYMPHYOTRICHUM BOREAL - S3
- TRACKS
- PSW
- REGULATED WETLAND
- WATERCOURSE (NBHN)
- SUBJECT PROPERTY
- NB PROPERTY LAYER

Plant Name	Rank	X	Y
Symphyotrichum boreal	S3	262184	5023632
Symphyotrichum boreal	S3	262165	5023595
Symphyotrichum boreal	S3	262149	5023585

NOTES:  
 Property data SNB,  
 Aerial Imagery from <http://services.arcgisonline.com> and  
 Esri, i-cubed, USDA, USGS, AEX, GeoEye, Getmapping,  
 Aerogrid, IGN, IGP, and the GIS User Community

Rare Plant Data is NAD 83 Z 20



**FIGURE 1 APPENDIX B  
 RARE PLANT SURVEY  
 SAINT JOHN, NB**

**WSP Project No. 161-12837**





# Appendix C

ACCDC DATA REPORT



# Appendix D

PLANT LIST

<b>Scientific Name</b>	<b>Common Name</b>	<b>Srank</b>	<b>Gsrank</b>
<i>Symphyotrichum boreale</i>	Boreal Aster	S3	3 Sensitive
<i>Juniperus horizontalis</i>	Creeping Juniper	S4	4 Secure
<i>Ludwigia palustris</i>	Marsh Seedbox	S4	4 Secure
<i>Elodea canadensis</i>	Canada Waterweed	S4S5	4 Secure
<i>Rubus setosus</i>	Bristly Blackberry	S4S5	4 Secure
<i>Acer pensylvanicum</i>	Striped Maple	S5	4 Secure
<i>Acer rubrum</i>	Red Maple	S5	4 Secure
<i>Acer spicatum</i>	Mountain Maple	S5	4 Secure
<i>Agrostis stolonifera</i>	Creeping Bent Grass	S5	4 Secure
<i>Alisma triviale</i>	Northern Water Plantain	S5	4 Secure
<i>Anaphalis margaritacea</i>	Pearly Everlasting	S5	4 Secure
<i>Betula alleghaniensis</i>	Yellow Birch	S5	4 Secure
<i>Betula populifolia</i>	Gray Birch	S5	4 Secure
<i>Calystegia sepium</i>	Hedge False Bindweed	S5	4 Secure
<i>Carex communis</i>	Fibrous-Root Sedge	S5	4 Secure
<i>Carex flava</i>	Yellow Sedge	S5	4 Secure
<i>Chamaedaphne calyculata</i>	Leatherleaf	S5	4 Secure
<i>Chamerion angustifolium</i>	Fireweed	S5	4 Secure
<i>Cicuta maculata</i>	Spotted Water-Hemlock	S5	4 Secure
<i>Conyza canadensis</i>	Canada Horseweed	S5	4 Secure
<i>Corylus cornuta</i>	Beaked Hazel	S5	4 Secure
<i>Danthonia spicata</i>	Poverty Oat Grass	S5	4 Secure
<i>Dennstaedtia punctilobula</i>	Eastern Hay-Scented Fern	S5	4 Secure
<i>Diervilla lonicera</i>	Northern Bush Honeysuckle	S5	4 Secure
<i>Dryopteris marginalis</i>	Marginal Wood Fern	S5	4 Secure
<i>Eleocharis ovata</i>	Ovate Spikerush	S5	4 Secure
<i>Gaultheria procumbens</i>	Eastern Teaberry	S5	4 Secure
<i>Gymnocarpium dryopteris</i>	Common Oak Fern	S5	4 Secure
<i>Hypericum canadense</i>	Canada St John's-wort	S5	4 Secure
<i>Impatiens capensis</i>	Spotted Jewelweed	S5	4 Secure
<i>Iris versicolor</i>	Harlequin Blue Flag	S5	4 Secure
<i>Juncus brevicaudatus</i>	Narrow-Panicked Rush	S5	4 Secure
<i>Juncus pelocarpus</i>	Brown-Fruited Rush	S5	4 Secure
<i>Kalmia angustifolia</i>	Sheep Laurel	S5	4 Secure
<i>Lathyrus palustris</i>	Marsh Vetchling	S5	4 Secure
<i>Luzula multiflora</i>	Common Woodrush	S5	4 Secure
<i>Lysimachia ciliata</i>	Fringed Yellow Loosestrife	S5	4 Secure
<i>Mentha arvensis</i>	Wild Mint	S5	4 Secure
<i>Moehringia lateriflora</i>	Blunt-leaved Sandwort	S5	4 Secure
<i>Nymphaea odorata</i>	Fragrant Water-lily	S5	4 Secure
<i>Oclemena acuminata</i>	Whorled Wood Aster	S5	4 Secure
<i>Osmunda regalis</i>	Royal Fern	S5	4 Secure
<i>Phegopteris connectilis</i>	Northern Beech Fern	S5	4 Secure
<i>Picea rubens</i>	Red Spruce	S5	4 Secure
<i>Populus balsamifera</i>	Balsam Poplar	S5	4 Secure
<i>Potamogeton pusillus</i>	Small Pondweed	S5	4 Secure
<i>Prenanthes trifoliolata</i>	Three-leaved Rattlesnakeroot	S5	4 Secure
<i>Prunella vulgaris</i>	Common Self-heal	S5	4 Secure
<i>Rhododendron canadense</i>	Rhodora	S5	4 Secure
<i>Ribes glandulosum</i>	Skunk Currant	S5	4 Secure
<i>Salix discolor</i>	Pussy Willow	S5	4 Secure
<i>Scirpus cyperinus</i>	Common Woolly Bulrush	S5	4 Secure

<i>Scutellaria lateriflora</i>	Mad-dog Skullcap	S5	4 Secure
<i>Sium suave</i>	Common Water Parsnip	S5	4 Secure
<i>Solidago flexicaulis</i>	Zigzag Goldenrod	S5	4 Secure
<i>Solidago juncea</i>	Early Goldenrod	S5	4 Secure
<i>Solidago rugosa</i>	Rough-stemmed Goldenrod	S5	4 Secure
<i>Sparganium americanum</i>	American Burreed	S5	4 Secure
<i>Symphotrichum cordifolium</i>	Heart-leaved Aster	S5	4 Secure
<i>Symphotrichum novi-belgii</i>	New York Aster	S5	4 Secure
<i>Triadenum fraseri</i>	Fraser's Marsh St John's-wort	S5	4 Secure
<i>Vaccinium myrtilloides</i>	Velvet-leaved Blueberry	S5	4 Secure
<i>Vaccinium oxycoccos</i>	Small Cranberry	S5	4 Secure
<i>Antennaria neglecta</i>	Field Pussytoes	SNA	7 Exotic
<i>Artemisia vulgaris</i>	Common Wormwood	SNA	7 Exotic
<i>Berberis thunbergii</i>	Japanese Barberry	SNA	7 Exotic
<i>Berberis vulgaris</i>	Common Barberry	SNA	7 Exotic
<i>Centaurea nigra</i>	Black Knapweed	SNA	7 Exotic
<i>Daucus carota</i>	Queen Anne's Lace	SNA	7 Exotic
<i>Digitaria ischaemum</i>	Smooth Crab Grass	SNA	7 Exotic
<i>Euphorbia peplus</i>	Petty Spurge	SNA	7 Exotic
<i>Frangula alnus</i>	Glossy Buckthorn	SNA	7 Exotic
<i>Galeopsis tetrahit</i>	Common Hemp-nettle	SNA	7 Exotic
<i>hesperis matronalis</i>	Dame's Rocket	SNA	7 Exotic
<i>Linaria vulgaris</i>	Butter-and-Eggs	SNA	7 Exotic
<i>Lotus corniculatus</i>	Garden Bird's-foot Trefoil	SNA	7 Exotic
<i>Malus pumila</i>	Common Apple	SNA	7 Exotic
<i>Matricaria discoidea</i>	Pineapple Weed	SNA	7 Exotic
<i>Melilotus albus</i>	White Sweet-clover	SNA	7 Exotic
<i>Pastinaca sativa</i>	Wild Parsnip	SNA	7 Exotic
<i>Poa annua</i>	Annual Blue Grass	SNA	7 Exotic
<i>Polygonum hydropiper</i>	Marshpepper Smartweed	SNA	7 Exotic
<i>Ranunculus acris</i>	Common Buttercup	SNA	7 Exotic
<i>Rumex crispus</i>	Curled Dock	SNA	7 Exotic
<i>Stachys palustris</i>	Marsh Hedge-Nettle	SNA	7 Exotic
<i>Tanacetum vulgare</i>	Common Tansy	SNA	7 Exotic
<i>Trifolium hybridum</i>	Alsike Clover	SNA	7 Exotic
<i>Trifolium repens</i>	White Clover	SNA	7 Exotic
<i>Verbascum thapsus</i>	Common Mullein	SNA	7 Exotic





# DATA REPORT 5686: Ashburn Road Saint John, NB

Prepared 29 September 2016  
by J. Churchill, Data Manager

## CONTENTS OF REPORT

### 1.0 Preface

- 1.1 Data List
- 1.2 Restrictions
- 1.3 Additional Information
- Map 1: Buffered Study Area

### 2.0 Rare and Endangered Species

- 2.1 Flora
- 2.2 Fauna
- Map 2: Flora and Fauna

### 3.0 Special Areas

- 3.1 Managed Areas
- 3.2 Significant Areas
- Map 3: Special Areas

### 4.0 Rare Species Lists

- 4.1 Fauna
- 4.2 Flora
- 4.3 Location Sensitive Species
- 4.4 Source Bibliography

### 5.0 Rare Species within 100 km

- 5.1 Source Bibliography



Map 1. A 100 km buffer around the study area

## 1.0 PREFACE

The Atlantic Canada Conservation Data Centre (ACCDC) is part of a network of NatureServe data centres and heritage programs serving 50 states in the U.S.A, 10 provinces and 1 territory in Canada, plus several Central and South American countries. The NatureServe network is more than 30 years old and shares a common conservation data methodology. The ACCDC was founded in 1997, and maintains data for the jurisdictions of New Brunswick, Nova Scotia, Prince Edward Island, and Newfoundland and Labrador. Although a non-governmental agency, the ACCDC is supported by 6 federal agencies and 4 provincial governments, as well as through outside grants and data processing fees. URL: [www.ACCDC.com](http://www.ACCDC.com).

Upon request and for a fee, the ACCDC queries its database and produces customized reports of the rare and endangered flora and fauna known to occur in or near a specified study area. As a supplement to that data, the ACCDC includes locations of managed areas with some level of protection, and known sites of ecological interest or sensitivity.

### 1.1 DATA LIST

Included datasets:

Filename	Contents
AshburnRdStJNB_5686ob.xls	All Rare and legally protected <i>Flora and Fauna</i> within 5 km of your study area
AshburnRdStJNB_5686ob100km.xls	A list of Rare and legally protected <i>Flora and Fauna</i> within 100 km of your study area
AshburnRdStJNB_5686ma.xls	All <i>Managed Areas</i> in your study area
AshburnRdStJNB_5686sa.xls	All <i>Significant Natural Areas</i> in your study area
AshburnRdStJNB_5686ff.xls	Rare and common <i>Freshwater Fish</i> in your study area (DFO database)

## 1.2 RESTRICTIONS

The ACCDC makes a strong effort to verify the accuracy of all the data that it manages, but it shall not be held responsible for any inaccuracies in data that it provides. By accepting ACCDC data, recipients assent to the following limits of use:

- a) Data is restricted to use by trained personnel who are sensitive to landowner interests and to potential threats to rare and/or endangered flora and fauna posed by the information provided.
- b) Data is restricted to use by the specified Data User; any third party requiring data must make its own data request.
- c) The ACCDC requires Data Users to cease using and delete data 12 months after receipt, and to make a new request for updated data if necessary at that time.
- d) ACCDC data responses are restricted to the data in our Data System at the time of the data request.
- e) Each record has an estimate of locational uncertainty, which must be referenced in order to understand the record's relevance to a particular location. Please see attached Data Dictionary for details.
- f) ACCDC data responses are not to be construed as exhaustive inventories of taxa in an area.
- g) The absence of a taxon cannot be inferred by its absence in an ACCDC data response.

## 1.3 ADDITIONAL INFORMATION

The attached file DataDictionary 2.1.pdf provides metadata for the data provided.

Please direct any additional questions about ACCDC data to the following individuals:

### Plants, Lichens, Ranking Methods, All other Inquiries

Sean Blaney, Senior Scientist, Executive Director

Tel: (506) 364-2658

[sblaney@mta.ca](mailto:sblaney@mta.ca)

### Animals (Fauna)

John Klymko, Zoologist

Tel: (506) 364-2660

[jklymko@mta.ca](mailto:jklymko@mta.ca)

### Plant Communities

Sarah Robinson, Community Ecologist

Tel: (506) 364-2664

[srobinson@mta.ca](mailto:srobinson@mta.ca)

### Data Management, GIS

James Churchill, Data Manager

Tel: (902) 679-6146

[jlchurchill@mta.ca](mailto:jlchurchill@mta.ca)

### Billing

Jean Breau

Tel: (506) 364-2657

[jrbreau@mta.ca](mailto:jrbreau@mta.ca)

Questions on the biology of Federal Species at Risk can be directed to ACCDC: (506) 364-2658, with questions on Species at Risk regulations to: Samara Eaton, Canadian Wildlife Service (NB and PE): (506) 364-5060 or Julie McKnight, Canadian Wildlife Service (NS): (902) 426-4196.

For provincial information about rare taxa and protected areas, or information about game animals, deer yards, old growth forests, archeological sites, fish habitat etc., in New Brunswick, please contact Stewart Lusk, Natural Resources: (506) 453-7110.

For provincial information about rare taxa and protected areas, or information about game animals, deer yards, old growth forests, archeological sites, fish habitat etc., in Nova Scotia, please contact Sherman Boates, NSDNR: (902) 679-6146. To determine if location-sensitive species (section 4.3) occur near your study site please contact a NSDNR Regional Biologist:

**Western:** Duncan Bayne  
(902) 648-3536  
[Duncan.Bayne@novascotia.ca](mailto:Duncan.Bayne@novascotia.ca)

**Western:** Donald Sam  
(902) 634-7525  
[Donald.Sam@novascotia.ca](mailto:Donald.Sam@novascotia.ca)

**Central:** Shavonne Meyer  
(902) 893-6353  
[Shavonne.Meyer@novascotia.ca](mailto:Shavonne.Meyer@novascotia.ca)

**Central:** Kimberly George  
(902) 893-5630  
[Kimberly.George@novascotia.ca](mailto:Kimberly.George@novascotia.ca)

**Eastern:** Mark Pulsifer  
(902) 863-7523  
[Mark.Pulsifer@novascotia.ca](mailto:Mark.Pulsifer@novascotia.ca)

**Eastern:** Donald Anderson  
(902) 295-3949  
[Donald.Anderson@novascotia.ca](mailto:Donald.Anderson@novascotia.ca)

**Eastern:** Terry Power  
(902) 563-3370  
[Terrance.Power@novascotia.ca](mailto:Terrance.Power@novascotia.ca)

For provincial information about rare taxa and protected areas, or information about game animals, fish habitat etc., in Prince Edward Island, please contact Garry Gregory, PEI Dept. of Communities, Land and Environment: (902) 569-7595.



## 2.0 RARE AND ENDANGERED SPECIES

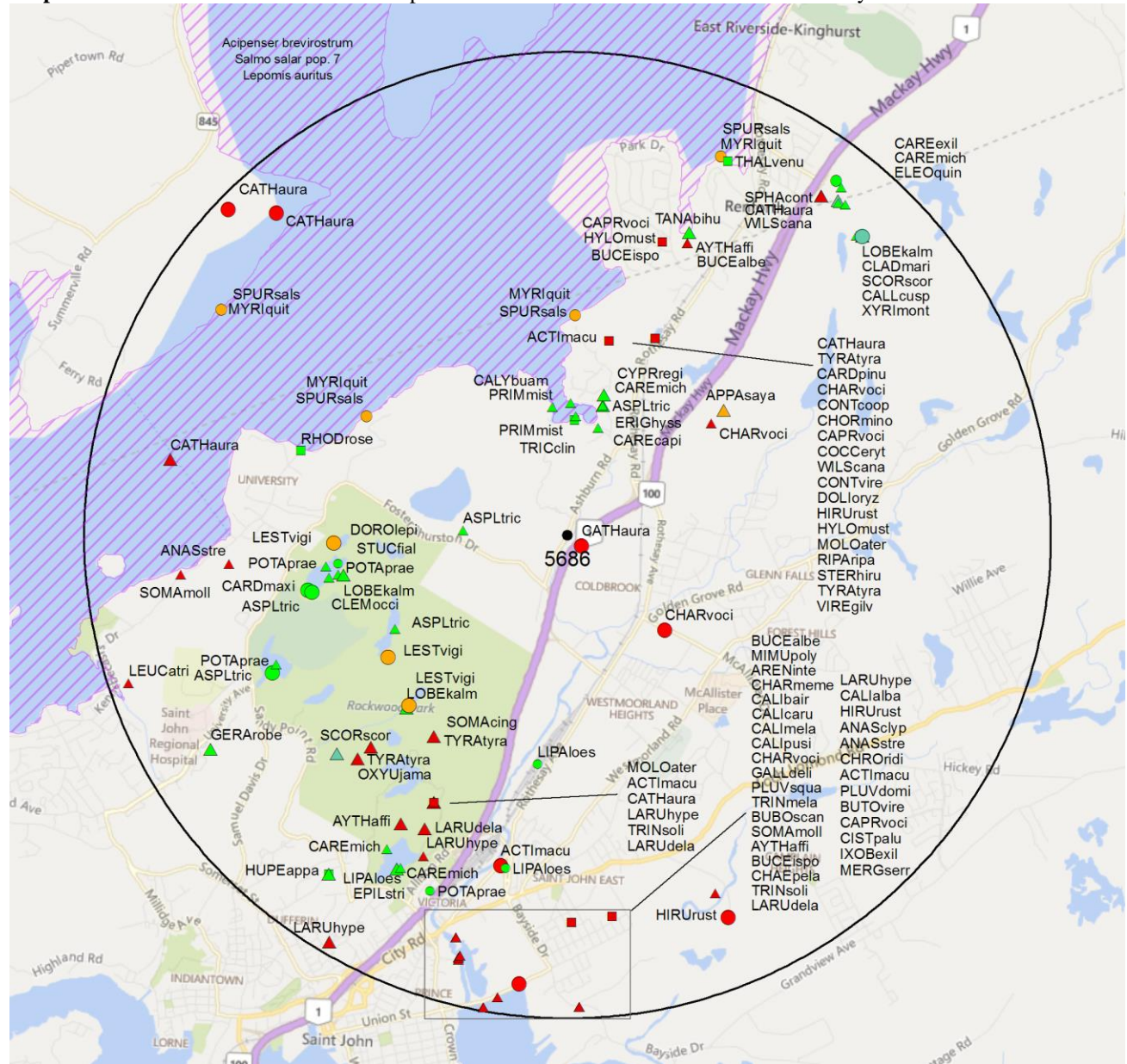
### 2.1 FLORA

A 5 km buffer around the study area contains 55 records of 25 vascular, 6 records of 3 nonvascular flora (Map 2 and attached: \*ob.xls).

### 2.2 FAUNA

A 5 km buffer around the study area contains 361 records of 48 vertebrate, 11 records of 5 invertebrate fauna (Map 2 and attached data files - see 1.1 Data List). Please see section 4.3 to determine if 'location-sensitive' species occur near your study site.

**Map 2:** Known observations of rare and/or protected flora and fauna within 5 km of the study area.



- RESOLUTION**
- 4.7 within 50s of kilometers
  - 4.0 within 10s of kilometers
  - 3.7 within 5s of kilometers
  - △ 3.0 within kilometers
  - △ 2.7 within 500s of meters
  - ⊙ 2.0 within 100s of meters
  - ⊙ 1.7 within 10s of meters

- HIGHER TAXON**
- vertebrate fauna
  - invertebrate fauna
  - vascular flora
  - nonvascular flora

### 3.0 SPECIAL AREAS

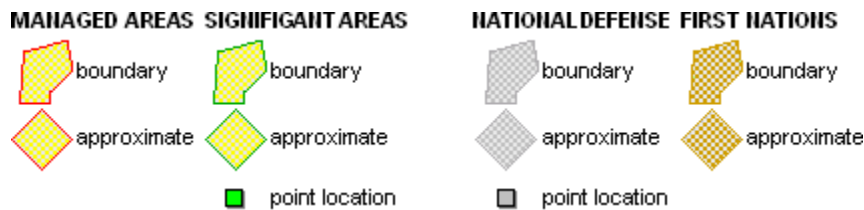
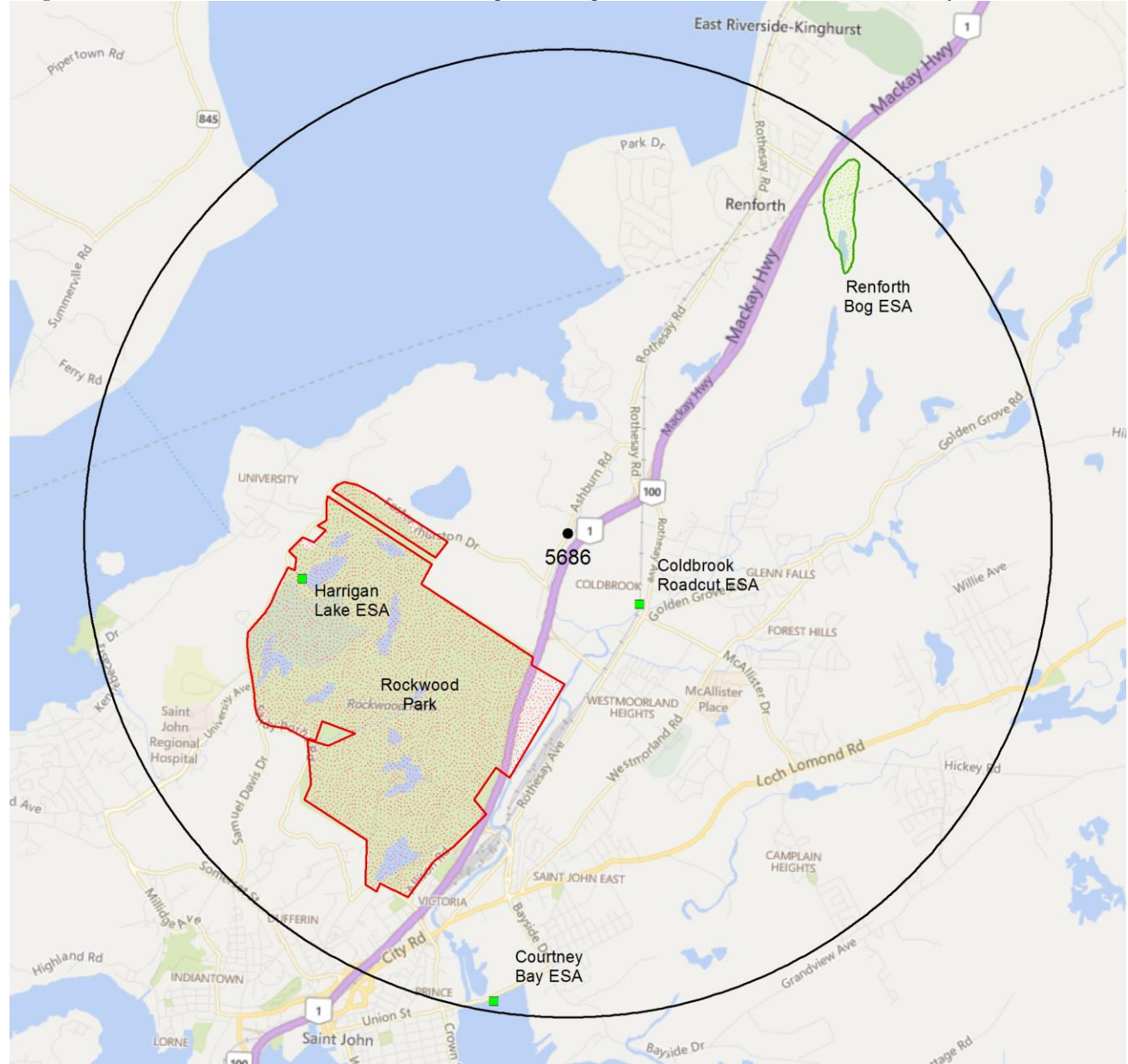
#### 3.1 MANAGED AREAS

The GIS scan identified 1 managed area in the vicinity of the study area (Map 3 and attached file: \*ma\*.xls)

#### 3.2 SIGNIFICANT AREAS

The GIS scan identified 4 biologically significant sites in the vicinity of the study area (Map 3 and attached file: \*sa\*.xls)

**Map 3:** Boundaries and/or locations of known Managed and Significant Areas within 5 km of the study area.



## 4.0 RARE SPECIES LISTS

Rare and/or endangered taxa (excluding “location-sensitive” species, section 4.3) within the 5 km-buffered area listed in order of concern, beginning with legally listed taxa, with the number of observations per taxon and the distance in kilometers from study area centroid to the closest observation ( $\pm$  the precision, in km, of the record). [P] = vascular plant, [N] = nonvascular plant, [A] = vertebrate animal, [I] = invertebrate animal, [C] = community. Note: records are from attached files \*ob.xls/\*ob.shp only.

### 4.1 FLORA

	Scientific Name	Common Name	COSEWIC	SARA	Prov Legal Prot	Prov Rarity Rank	Prov GS Rank	# recs	Distance (km)
N	<i>Calliergonella cuspidata</i>	Common Large Wetland Moss				S2S3	3 Sensitive	2	4.3 $\pm$ 0.0
N	<i>Scorpidium scorpioides</i>	Hooked Scorpion Moss				S2S3	3 Sensitive	3	3.3 $\pm$ 1.0
N	<i>Sphagnum contortum</i>	Twisted Peat Moss				S3S4	4 Secure	1	4.4 $\pm$ 0.0
P	<i>Calypso bulbosa var. americana</i>	Calypso				S2	2 May Be At Risk	1	1.4 $\pm$ 0.0
P	<i>Geranium robertianum</i>	Herb Robert				S2S3	4 Secure	1	4.3 $\pm$ 1.0
P	<i>Myriophyllum quitense</i>	Andean Water Milfoil				S2S3	4 Secure	4	2.3 $\pm$ 0.0
P	<i>Stuckenia filiformis ssp. alpina</i>	Thread-leaved Pondweed				S2S3	3 Sensitive	1	2.5 $\pm$ 0.0
P	<i>Potamogeton praelongus</i>	White-stemmed Pondweed				S2S3	4 Secure	4	2.4 $\pm$ 0.0
P	<i>Erigeron hyssopifolius</i>	Hyssop-leaved Fleabane				S3	4 Secure	2	1.4 $\pm$ 0.0
P	<i>Tanacetum bipinnatum ssp. huronense</i>	Lake Huron Tansy				S3	4 Secure	1	3.4 $\pm$ 1.0
P	<i>Cardamine maxima</i>	Large Toothwort				S3	4 Secure	1	2.4 $\pm$ 0.0
P	<i>Rhodiola rosea</i>	Roseroot				S3	4 Secure	1	2.9 $\pm$ 5.0
P	<i>Epilobium strictum</i>	Downy Willowherb				S3	4 Secure	2	4.3 $\pm$ 5.0
P	<i>Primula mistassinica</i>	Mistassini Primrose				S3	4 Secure	2	1.2 $\pm$ 5.0
P	<i>Clematis occidentalis</i>	Purple Clematis				S3	4 Secure	3	2.7 $\pm$ 0.0
P	<i>Thalictrum venulosum</i>	Northern Meadow-rue				S3	4 Secure	1	4.2 $\pm$ 5.0
P	<i>Carex capillaris</i>	Hairlike Sedge				S3	4 Secure	1	1.1 $\pm$ 0.0
P	<i>Carex exilis</i>	Coastal Sedge				S3	4 Secure	1	4.6 $\pm$ 0.0
P	<i>Carex michauxiana</i>	Michaux's Sedge				S3	4 Secure	6	1.4 $\pm$ 0.0
P	<i>Eleocharis quinqueflora</i>	Few-flowered Spikerush				S3	4 Secure	2	4.6 $\pm$ 0.0
P	<i>Trichophorum clintonii</i>	Clinton's Clubrush				S3	4 Secure	1	1.2 $\pm$ 0.0
P	<i>Cypripedium reginae</i>	Showy Lady's-Slipper				S3	3 Sensitive	3	1.5 $\pm$ 1.0
P	<i>Liparis loeselii</i>	Loesel's Twayblade				S3	4 Secure	3	2.4 $\pm$ 0.0
P	<i>Xyris montana</i>	Northern Yellow-Eyed-Grass				S3	4 Secure	1	4.5 $\pm$ 0.0
P	<i>Asplenium trichomanes-ramosum</i>	Green Spleenwort				S3	4 Secure	8	1.1 $\pm$ 0.0
P	<i>Huperzia appalachiana</i>	Appalachian Fir-Clubmoss				S3	3 Sensitive	1	4.3 $\pm$ 1.0
P	<i>Lobelia kalmii</i>	Brook Lobelia				S3S4	4 Secure	3	2.4 $\pm$ 1.0
P	<i>Cladium mariscoides</i>	Smooth Twigrush				S3S4	4 Secure	1	4.3 $\pm$ 0.0

### 4.2 FAUNA

	Scientific Name	Common Name	COSEWIC	SARA	Prov Legal Prot	Prov Rarity Rank	Prov GS Rank	# recs	Distance (km)
A	<i>Charadrius melodus melodus</i>	Piping Plover melodus ssp	Endangered	Endangered	Endangered	S1B,S1M	1 At Risk	1	5.0 $\pm$ 0.0
A	<i>Calidris canutus rufa</i>	Red Knot rufa ssp	Endangered		Endangered	S2M	1 At Risk	2	4.5 $\pm$ 0.0
A	<i>Ixobrychus exilis</i>	Least Bittern	Threatened	Threatened	Threatened	S1S2B,S1S2M	1 At Risk	1	4.0 $\pm$ 7.0
A	<i>Hylocichla mustelina</i>	Wood Thrush	Threatened		Threatened	S1S2B,S1S2M	2 May Be At Risk	2	2.2 $\pm$ 7.0
A	<i>Caprimulgus vociferus</i>	Whip-Poor-Will	Threatened	Threatened	Threatened	S2B,S2M	1 At Risk	3	2.2 $\pm$ 7.0
A	<i>Chaetura pelagica</i>	Chimney Swift	Threatened	Threatened	Threatened	S2S3B,S2M	1 At Risk	1	4.5 $\pm$ 0.0
A	<i>Riparia riparia</i>	Bank Swallow	Threatened		Threatened	S2S3B,S2S3M	3 Sensitive	1	2.2 $\pm$ 7.0
A	<i>Hirundo rustica</i>	Barn Swallow	Threatened		Threatened	S3B,S3M	3 Sensitive	5	2.2 $\pm$ 7.0
A	<i>Dolichonyx oryzivorus</i>	Bobolink	Threatened		Threatened	S3B,S3M	3 Sensitive	1	2.2 $\pm$ 7.0
A	<i>Chordeiles minor</i>	Common Nighthawk	Threatened	Threatened	Threatened	S3B,S4M	1 At Risk	2	2.2 $\pm$ 7.0
A	<i>Contopus cooperi</i>	Olive-sided Flycatcher	Threatened	Threatened	Threatened	S3S4B,S3S4M	1 At Risk	1	2.2 $\pm$ 7.0
A	<i>Wilsonia canadensis</i>	Canada Warbler	Threatened	Threatened	Threatened	S3S4B,S3S4M	1 At Risk	2	2.2 $\pm$ 7.0
A	<i>Bucephala islandica (Eastern pop.)</i>	Barrow's Goldeneye - Eastern pop.	Special Concern	Special Concern	Special Concern	S2M,S2N	3 Sensitive	4	3.3 $\pm$ 0.0



	<b>Scientific Name</b>	<b>Common Name</b>	<b>COSEWIC</b>	<b>SARA</b>	<b>Prov Legal Prot</b>	<b>Prov Rarity Rank</b>	<b>Prov GS Rank</b>	<b># recs</b>	<b>Distance (km)</b>
A	<i>Contopus virens</i>	Eastern Wood-Pewee	Special Concern		Special Concern	S4B,S4M	4 Secure	2	2.2 ± 7.0
A	<i>Bubo scandiacus</i>	Snowy Owl	Not At Risk			S1N,S2S3M	4 Secure	1	4.8 ± 0.0
A	<i>Sterna hirundo</i>	Common Tern	Not At Risk			S3B,SUM	3 Sensitive	1	2.2 ± 7.0
A	<i>Tringa melanoleuca</i>	Greater Yellowlegs				S1?B,S5M	4 Secure	42	4.3 ± 0.0
A	<i>Leucophaeus atricilla</i>	Laughing Gull				S1B,S1M	3 Sensitive	1	4.8 ± 0.0
A	<i>Oxyura jamaicensis</i>	Ruddy Duck				S1B,S2S3M	4 Secure	1	3.2 ± 1.0
A	<i>Aythya affinis</i>	Lesser Scaup				S1B,S4M	4 Secure	3	3.3 ± 0.0
A	<i>Chroicocephalus ridibundus</i>	Black-headed Gull				S1N,S2M	3 Sensitive	1	4.5 ± 0.0
A	<i>Butorides virescens</i>	Green Heron				S1S2B,S1S2M	3 Sensitive	1	4.0 ± 7.0
A	<i>Calidris bairdii</i>	Baird's Sandpiper				S1S2M	3 Sensitive	5	4.5 ± 0.0
A	<i>Cistothorus palustris</i>	Marsh Wren				S2B,S2M	3 Sensitive	2	4.0 ± 7.0
A	<i>Mimus polyglottos</i>	Northern Mockingbird				S2B,S2M	3 Sensitive	3	4.0 ± 7.0
A	<i>Anas strepera</i>	Gadwall				S2B,S3M	4 Secure	9	4.0 ± 0.0
A	<i>Tringa solitaria</i>	Solitary Sandpiper				S2B,S5M	4 Secure	4	3.1 ± 4.0
A	<i>Larus hyperboreus</i>	Glaucous Gull				S2N,S2M	4 Secure	9	3.1 ± 2.0
A	<i>Anas clypeata</i>	Northern Shoveler				S2S3B,S2S3M	4 Secure	1	4.5 ± 0.0
A	<i>Pluvialis dominica</i>	American Golden-Plover				S2S3M	3 Sensitive	9	4.5 ± 0.0
A	<i>Carduelis pinus</i>	Pine Siskin				S3	4 Secure	2	2.2 ± 7.0
A	<i>Cathartes aura</i>	Turkey Vulture				S3B,S3M	4 Secure	9	0.2 ± 0.0
A	<i>Charadrius vociferus</i>	Killdeer				S3B,S3M	3 Sensitive	28	1.4 ± 0.0
A	<i>Coccyzus erythrophthalmus</i>	Black-billed Cuckoo				S3B,S3M	4 Secure	1	2.2 ± 7.0
A	<i>Vireo gilvus</i>	Warbling Vireo				S3B,S3M	4 Secure	1	2.2 ± 7.0
A	<i>Molothrus ater</i>	Brown-headed Cowbird				S3B,S3M	2 May Be At Risk	3	2.2 ± 7.0
A	<i>Somateria mollissima</i>	Common Eider				S3B,S4M,S3N	4 Secure	2	3.5 ± 0.0
A	<i>Mergus serrator</i>	Red-breasted Merganser				S3B,S5M,S4S5N	4 Secure	1	4.0 ± 7.0
A	<i>Arenaria interpres</i>	Ruddy Turnstone				S3M	4 Secure	7	4.3 ± 0.0
A	<i>Bucephala albeola</i>	Bufflehead				S3M,S2N	3 Sensitive	41	3.3 ± 0.0
A	<i>Tyrannus tyrannus</i>	Eastern Kingbird				S3S4B,S3S4M	3 Sensitive	5	2.1 ± 5.0
A	<i>Actitis macularius</i>	Spotted Sandpiper				S3S4B,S5M	4 Secure	30	2.1 ± 5.0
A	<i>Gallinago delicata</i>	Wilson's Snipe				S3S4B,S5M	4 Secure	1	5.0 ± 0.0
A	<i>Larus delawarensis</i>	Ring-billed Gull				S3S4B,S5M	4 Secure	11	3.1 ± 2.0
A	<i>Pluvialis squatarola</i>	Black-bellied Plover				S3S4M	4 Secure	44	4.3 ± 0.0
A	<i>Calidris pusilla</i>	Semipalmated Sandpiper				S3S4M	4 Secure	43	4.3 ± 0.0
A	<i>Calidris melanotos</i>	Pectoral Sandpiper				S3S4M	4 Secure	4	4.3 ± 0.0
A	<i>Calidris alba</i>	Sanderling				S3S4M,S1N	3 Sensitive	7	4.5 ± 0.0
I	<i>Appalachina sayana</i>	Spike-lip Crater	Not At Risk			S3?		1	2.1 ± 1.0
I	<i>Dorocordulia lepida</i>	Petite Emerald				S3	4 Secure	1	2.4 ± 0.0
I	<i>Somatochlora cingulata</i>	Lake Emerald				S3	4 Secure	1	2.4 ± 0.0
I	<i>Lestes vigilax</i>	Swamp Spreadwing				S3	3 Sensitive	3	2.2 ± 0.0
I	<i>Spurwinkia salsa</i>	Saltmarsh Hydrobe				S3		5	2.3 ± 0.0

### 4.3 LOCATION SENSITIVE SPECIES

The Department of Natural Resources in each Maritimes province considers a number of species “location sensitive”. Concern about exploitation of location-sensitive species precludes inclusion of precise coordinates in this report. Those intersecting a 5 km buffer of your study area are indicated below with “YES”.

#### New Brunswick

Scientific Name	Common Name	SARA	Prov Legal Prot	Known within 5 km of Study Site?
<i>Chrysemys picta picta</i>	Eastern Painted Turtle			No
<i>Chelydra serpentina</i>	Snapping Turtle	Special Concern	Special Concern	No
<i>Glyptemys insculpta</i>	Wood Turtle	Threatened	Threatened	No
<i>Haliaeetus leucocephalus</i>	<b>Bald Eagle</b>		<b>Endangered</b>	<b>YES</b>
<i>Falco peregrinus pop. 1</i>	<b>Peregrine Falcon - anatum/tundrius pop.</b>	<b>Special Concern</b>	<b>Endangered</b>	<b>YES</b>
<i>Cicindela marginipennis</i>	Cobblestone Tiger Beetle	Endangered	Endangered	No
<i>Coenonympha nipisiquit</i>	Maritime Ringlet	Endangered	Endangered	No
<i>Bat Hibernaculum</i>		<b>[Endangered]'</b>	<b>[Endangered]'</b>	<b>YES</b>

1 *Myotis lucifugus* (Little Brown Myotis), *Myotis septentrionalis* (Long-eared Myotis), and *Perimyotis subflavus* (Tri-colored Bat or Eastern Pipistrelle) are all Endangered under the Federal Species at Risk Act and the NB Species at Risk Act.

### 4.4 SOURCE BIBLIOGRAPHY

The recipient of these data shall acknowledge the ACCDC and the data sources listed below in any documents, reports, publications or presentations, in which this dataset makes a significant contribution.

# recs	CITATION
194	Morrison, Guy. 2011. Maritime Shorebird Survey (MSS) database. Canadian Wildlife Service, Ottawa, 15939 surveys. 86171 recs.
119	eBird. 2014. eBird Basic Dataset. Version: EBD_relNov-2014. Ithaca, New York. Nov 2014. Cornell Lab of Ornithology, 25036 recs.
36	Erskine, A.J. 1992. Maritime Breeding Bird Atlas Database. NS Museum & Nimbus Publ., Halifax, 82,125 recs.
30	Clayden, S.R. 1998. NBM Science Collections databases: vascular plants. New Brunswick Museum, Saint John NB, 19759 recs.
9	Lepage, D. 2014. Maritime Breeding Bird Atlas Database. Bird Studies Canada, Sackville NB, 407,838 recs.
8	Clayden, S.R. 2007. NBM Science Collections databases: vascular plants. New Brunswick Museum, Saint John NB, download Mar. 2007, 6914 recs.
6	Sollows, M.C., 2009. NBM Science Collections databases: molluscs. New Brunswick Museum, Saint John NB, download Jan. 2009, 6951 recs (2957 in Atlantic Canada).
5	Brunelle, P.-M. (compiler). 2009. ADIP/MDDS Odonata Database: data to 2006 inclusive. Atlantic Dragonfly Inventory Program (ADIP), 24200 recs.
4	Bagnell, B.A. 2001. New Brunswick Bryophyte Occurrences. B&B Botanical, Sussex, 478 recs.
4	Benedict, B. Connell Herbarium Specimen Database Download 2004. Connell Memorial Herbarium, University of New Brunswick. 2004.
4	Benedict, B. Connell Herbarium Specimens. University New Brunswick, Fredericton. 2003.
4	Tims, J. & Craig, N. 1995. Environmentally Significant Areas in New Brunswick (NBESA). NB Dept of Environment & Nature Trust of New Brunswick Inc.
3	Benedict, B. Connell Herbarium Specimens (Data) . University New Brunswick, Fredericton. 2003.
3	Pardieck, K.L. & Ziolkowski Jr., D.J.; Hudson, M.-A.R. 2014. North American Breeding Bird Survey Dataset 1966 - 2013, version 2013.0. U.S. Geological Survey, Patuxent Wildlife Research Center <www.pwrc.usgs.gov/BBS/RawData/>.
2	Belland, R.J. Maritimes moss records from various herbarium databases. 2014.
2	Blaney, C.S.; Mazerolle, D.M.; Oberndorfer, E. 2007. Fieldwork 2007. Atlantic Canada Conservation Data Centre. Sackville NB, 13770 recs.
2	Tims, J. & Craig, N. 1995. Environmentally Significant Areas in New Brunswick (NBESA). NB Dept of Environment & Nature Trust of New Brunswick Inc, 6042 recs.
1	ARCAD
1	Blaney, C.S.; Mazerolle, D.M.; Belliveau, A.B. 2014. Atlantic Canada Conservation Data Centre Fieldwork 2014. Atlantic Canada Conservation Data Centre, # recs.
1	Dept of Fisheries & Oceans. 2001. Atlantic Salmon Maritime provinces overview for 2000. DFO.
1	Goltz, J.P. 2012. Field Notes, 1989-2005. , 1091 recs.
1	Houston, J.J. 1990. Status of the Redbreast Sunfish ( <i>Lepomis auritus</i> ) in Canada. Can. Field-Nat. 104:64-68.
1	Litvak, M.K. 2001. Shortnose Sturgeon records in four NB rivers. UNB Saint John NB. Pers. comm. to K. Bredin, 6 recs.

## 5.0 RARE SPECIES WITHIN 100 KM

A 100 km buffer around the study area contains 32194 records of 144 vertebrate and 1057 records of 70 invertebrate fauna; 5754 records of 356 vascular, 667 records of 187 nonvascular flora (attached: \*ob100km.xls).

Taxa within 100 km of the study site that are rare and/or endangered in the province in which the study site occurs. All ranks correspond to the province in which the study site falls, even for out-of-province records. Taxa are listed in order of concern, beginning with legally listed taxa, with the number of observations per taxon and the distance in kilometers from study area centroid to the closest observation ( $\pm$  the precision, in km, of the record).

Taxonomic Group	Scientific Name	Common Name	COSEWIC	SARA	Prov Legal Prot	Prov Rarity Rank	Prov GS Rank	# recs	Distance (km)	Prov
A	<i>Myotis lucifugus</i>	Little Brown Myotis	Endangered	Endangered	Endangered	S1	1 At Risk	59	2.4 $\pm$ 1.0	NB
A	<i>Myotis septentrionalis</i>	Northern Long-eared Myotis	Endangered	Endangered	Endangered	S1	1 At Risk	18	2.4 $\pm$ 1.0	NB
A	<i>Perimyotis subflavus</i>	Eastern Pipistrelle	Endangered	Endangered	Endangered	S1	1 At Risk	8	8.8 $\pm$ 0.0	NB
A	<i>Eubalaena glacialis</i>	North Atlantic Right Whale	Endangered	Endangered	Endangered	S1		6	79.2 $\pm$ 50.0	NS
A	<i>Sterna dougallii</i>	Roseate Tern	Endangered	Endangered	Endangered	S1?B,S1?M	1 At Risk	4	61.8 $\pm$ 0.0	NB
A	<i>Charadrius melodus melodus</i>	Piping Plover melodus ssp	Endangered	Endangered	Endangered	S1B,S1M	1 At Risk	24	5.0 $\pm$ 0.0	NB
A	<i>Dermochelys coriacea</i> (Atlantic pop.)	Leatherback Sea Turtle - Atlantic pop.	Endangered	Endangered	Endangered	S1S2N	1 At Risk	4	7.8 $\pm$ 50.0	NB
A	<i>Salmo salar pop. 1</i>	Atlantic Salmon - Inner Bay of Fundy pop.	Endangered	Endangered	Endangered	S2	2 May Be At Risk	55	18.3 $\pm$ 1.0	NB
A	<i>Calidris canutus rufa</i>	Red Knot rufa ssp	Endangered		Endangered	S2M	1 At Risk	374	4.5 $\pm$ 0.0	NB
A	<i>Rangifer tarandus pop. 2</i>	Woodland Caribou (Atlantic-Gasp [r-sie pop.)	Endangered	Endangered	Extirpated	SX	0.1 Extirpated	4	12.7 $\pm$ 5.0	NB
A	<i>Sturnella magna</i>	Eastern Meadowlark	Threatened		Threatened	S1B,S1M	2 May Be At Risk	45	20.2 $\pm$ 7.0	NB
A	<i>Ixobrychus exilis</i>	Least Bittern	Threatened	Threatened	Threatened	S1S2B,S1S2M	1 At Risk	28	4.0 $\pm$ 7.0	NB
A	<i>Hylocichla mustelina</i>	Wood Thrush	Threatened		Threatened	S1S2B,S1S2M	2 May Be At Risk	167	2.2 $\pm$ 7.0	NB
A	<i>Caprimulgus vociferus</i>	Whip-Poor-Will	Threatened	Threatened	Threatened	S2B,S2M	1 At Risk	80	2.2 $\pm$ 7.0	NB
A	<i>Catharus bicknelli</i>	Bicknell's Thrush	Threatened	Special Concern	Threatened	S2B,S2M	1 At Risk	27	14.4 $\pm$ 1.0	NB
A	<i>Glyptemys insculpta</i>	Wood Turtle	Threatened	Threatened	Threatened	S2S3	1 At Risk	95	6.1 $\pm$ 10.0	NB
A	<i>Chaetura pelagica</i>	Chimney Swift	Threatened	Threatened	Threatened	S2S3B,S2M	1 At Risk	325	4.5 $\pm$ 0.0	NB
A	<i>Riparia riparia</i>	Bank Swallow	Threatened		Threatened	S2S3B,S2S3M	3 Sensitive	408	2.2 $\pm$ 7.0	NB
A	<i>Acipenser oxyrinchus</i>	Atlantic Sturgeon	Threatened		Threatened	S3	4 Secure	1	46.4 $\pm$ 1.0	NB
A	<i>Hirundo rustica</i>	Barn Swallow	Threatened		Threatened	S3B,S3M	3 Sensitive	1346	2.2 $\pm$ 7.0	NB
A	<i>Dolichonyx oryzivorus</i>	Bobolink	Threatened		Threatened	S3B,S3M	3 Sensitive	847	2.2 $\pm$ 7.0	NB
A	<i>Chordeiles minor</i>	Common Nighthawk	Threatened	Threatened	Threatened	S3B,S4M	1 At Risk	285	2.2 $\pm$ 7.0	NB
A	<i>Contopus cooperi</i>	Olive-sided Flycatcher	Threatened	Threatened	Threatened	S3S4B,S3S4M	1 At Risk	330	2.2 $\pm$ 7.0	NB
A	<i>Wilsonia canadensis</i>	Canada Warbler	Threatened	Threatened	Threatened	S3S4B,S3S4M	1 At Risk	721	2.2 $\pm$ 7.0	NB
A	<i>Anguilla rostrata</i>	American Eel	Threatened		Threatened	S4	4 Secure	45	17.9 $\pm$ 0.0	NB
A	<i>Osmerus mordax pop. 2</i>	Lake Utopia Smelt large-bodied pop.	Threatened		Threatened			2	60.9 $\pm$ 10.0	NB
A	<i>Coturnicops noveboracensis</i>	Yellow Rail	Special Concern	Special Concern	Special Concern	S1?B,SUM	2 May Be At Risk	3	52.6 $\pm$ 7.0	NB
A	<i>Histrionicus histrionicus pop. 1</i>	Harlequin Duck - Eastern pop.	Special Concern	Special Concern	Endangered	S1B,S1S2N,S2M	1 At Risk	153	36.6 $\pm$ 17.0	NB
A	<i>Falco peregrinus pop. 1</i>	Peregrine Falcon - anatum/tundrius	Special Concern	Special Concern	Endangered	S1B,S3M	1 At Risk	593	1.9 $\pm$ 0.0	NB
A	<i>Asio flammeus</i>	Short-eared Owl	Special Concern	Special Concern	Special Concern	S2B,S2M	3 Sensitive	17	41.8 $\pm$ 0.0	NB
A	<i>Bucephala islandica</i> (Eastern pop.)	Barrow's Goldeneye - Eastern pop.	Special Concern	Special Concern	Special Concern	S2M,S2N	3 Sensitive	56	3.3 $\pm$ 0.0	NB
A	<i>Balaenoptera physalus</i>	Fin Whale - Atlantic pop.	Special Concern	Special Concern	Special Concern	S2S3		4	18.7 $\pm$ 0.0	NB
A	<i>Acipenser brevirostrum</i>	Shortnose Sturgeon	Special Concern	Special Concern	Special Concern	S3	3 Sensitive	7	9.5 $\pm$ 10.0	NB
A	<i>Chelydra serpentina</i>	Snapping Turtle	Special Concern	Special Concern	Special Concern	S3	3 Sensitive	29	13.7 $\pm$ 0.0	NB
A	<i>Euphagus carolinus</i>	Rusty Blackbird	Special Concern	Special Concern	Special Concern	S3B,S3M	2 May Be At Risk	120	5.4 $\pm$ 0.0	NB
A	<i>Phalaropus lobatus</i>	Red-necked Phalarope	Special Concern			S3M	3 Sensitive	178	12.7 $\pm$ 0.0	NB
A	<i>Phocoena phocoena</i>	Harbour Porpoise - Northwest Atlantic pop.	Special Concern	Threatened		S4		230	6.1 $\pm$ 0.0	NB

Taxonomic Group	Scientific Name	Common Name	COSEWIC	SARA	Prov Legal Prot	Prov Rarity Rank	Prov GS Rank	# recs	Distance (km)	Prov
A	(NW Atlantic pop.) <i>Contopus virens</i>	Eastern Wood-Pewee	Special Concern		Special Concern	S4B,S4M	4 Secure	620	2.2 ± 7.0	NB
A	<i>Podiceps auritus</i>	Horned Grebe	Special Concern		Special Concern	S4N,S4M	4 Secure	267	5.1 ± 1.0	NB
A	<i>Odobenus rosmarus rosmarus</i>	Atlantic Walrus	Special Concern		Extirpated	SX		1	75.0 ± 5.0	NS
A	<i>Hemidactylium scutatum</i>	Four-toed Salamander	Not At Risk			S1?	5 Undetermined	13	75.1 ± 0.0	NS
A	<i>Bubo scandiacus</i>	Snowy Owl	Not At Risk			S1N,S2S3M	4 Secure	30	4.8 ± 0.0	NB
A	<i>Accipiter cooperii</i>	Cooper's Hawk	Not At Risk			S1S2B,S1S2M	2 May Be At Risk	17	32.9 ± 7.0	NB
A	<i>Fulica americana</i>	American Coot	Not At Risk			S1S2B,S1S2M	3 Sensitive	8	36.4 ± 7.0	NB
A	<i>Aegolius funereus</i>	Boreal Owl	Not At Risk			S1S2B,SUM	2 May Be At Risk	5	24.4 ± 7.0	NB
A	<i>Sorex dispar</i>	Long-tailed Shrew	Not At Risk	Special Concern		S2	3 Sensitive	2	24.8 ± 1.0	NB
A	<i>Buteo lineatus</i>	Red-shouldered Hawk	Not At Risk	Special Concern		S2B,S2M	2 May Be At Risk	47	16.9 ± 0.0	NB
A	<i>Chlidonias niger</i>	Black Tern	Not At Risk			S2B,S2M	3 Sensitive	106	22.1 ± 7.0	NB
A	<i>Globicephala melas</i>	Long-finned Pilot Whale	Not At Risk			S2S3		3	8.1 ± 1.0	NB
A	<i>Lynx canadensis</i>	Canadian Lynx	Not At Risk		Endangered	S3	1 At Risk	12	13.7 ± 1.0	NB
A	<i>Desmognathus fuscus</i>	Northern Dusky Salamander	Not At Risk			S3	3 Sensitive	51	12.0 ± 1.0	NB
A	<i>Megaptera novaeangliae</i>	Humpback Whale (NW Atlantic pop.)	Not At Risk	Special Concern		S3		3	80.6 ± 5.0	NB
A	<i>Sterna hirundo</i>	Common Tern	Not At Risk			S3B,SUM	3 Sensitive	194	2.2 ± 7.0	NB
A	<i>Podiceps grisegena</i>	Red-necked Grebe	Not At Risk			S3M,S2N	3 Sensitive	657	9.3 ± 2.0	NB
A	<i>Lagenorhynchus acutus</i>	Atlantic White-sided Dolphin	Not At Risk			S3S4		1	8.1 ± 1.0	NB
A	<i>Haliaeetus leucocephalus</i>	Bald Eagle	Not At Risk		Endangered	S4	1 At Risk	1332	1.9 ± 0.0	NB
A	<i>Canis lupus</i>	Gray Wolf	Not At Risk		Extirpated	SX	0.1 Extirpated	4	6.1 ± 1.0	NB
A	<i>Puma concolor pop. 1</i>	Cougar - Eastern pop.	Data Deficient		Endangered	SU	5 Undetermined	104	12.8 ± 1.0	NB
A	<i>Morone saxatilis</i>	Striped Bass	E,E,SC			S3	2 May Be At Risk	10	6.8 ± 10.0	NB
A	<i>Salvelinus alpinus</i>	Arctic Char				S1	3 Sensitive	3	64.3 ± 0.0	NB
A	<i>Tringa melanoleuca</i>	Greater Yellowlegs				S1?B,S5M	4 Secure	942	4.3 ± 0.0	NB
A	<i>Gallinula chloropus</i>	Common Moorhen				S1B,S1M	3 Sensitive	24	6.3 ± 1.0	NB
A	<i>Bartramia longicauda</i>	Upland Sandpiper				S1B,S1M	3 Sensitive	45	43.3 ± 7.0	NB
A	<i>Phalaropus tricolor</i>	Wilson's Phalarope				S1B,S1M	3 Sensitive	57	6.2 ± 1.0	NB
A	<i>Leucophaeus atricilla</i>	Laughing Gull				S1B,S1M	3 Sensitive	73	4.8 ± 0.0	NB
A	<i>Progne subis</i>	Purple Martin				S1B,S1M	2 May Be At Risk	237	9.5 ± 7.0	NB
A	<i>Oxyura jamaicensis</i>	Ruddy Duck				S1B,S2S3M	4 Secure	52	3.2 ± 1.0	NB
A	<i>Uria aalge</i>	Common Murre				S1B,S3N,S3M	4 Secure	108	24.4 ± 15.0	NB
A	<i>Aythya affinis</i>	Lesser Scaup				S1B,S4M	4 Secure	205	3.3 ± 0.0	NB
A	<i>Aythya marila</i>	Greater Scaup				S1B,S4M,S2N	4 Secure	36	6.6 ± 0.0	NB
A	<i>Eremophila alpestris</i>	Horned Lark				S1B,S4N,S5M	2 May Be At Risk	30	9.3 ± 5.0	NB
A	<i>Sterna paradisaea</i>	Arctic Tern				S1B,SUM	2 May Be At Risk	101	30.8 ± 16.0	NB
A	<i>Fratercula arctica</i>	Atlantic Puffin				S1B,SUN,SUM	3 Sensitive	134	24.4 ± 15.0	NB
A	<i>Branta bernicla</i>	Brant				S1N, S2S3M	4 Secure	504	10.9 ± 0.0	NB
A	<i>Chroicocephalus ridibundus</i>	Black-headed Gull				S1N,S2M	3 Sensitive	42	4.5 ± 0.0	NB
A	<i>Butorides virescens</i>	Green Heron				S1S2B,S1S2M	3 Sensitive	22	4.0 ± 7.0	NB
A	<i>Nycticorax nycticorax</i>	Black-crowned Night-heron				S1S2B,S1S2M	3 Sensitive	53	6.2 ± 1.0	NB
A	<i>Empidonax traillii</i>	Willow Flycatcher				S1S2B,S1S2M	3 Sensitive	98	5.8 ± 5.0	NB
A	<i>Stelgidopteryx serripennis</i>	Northern Rough-winged Swallow				S1S2B,S1S2M	2 May Be At Risk	21	18.4 ± 7.0	NB
A	<i>Troglodytes aedon</i>	House Wren				S1S2B,S1S2M	5 Undetermined	31	6.9 ± 0.0	NB
A	<i>Rissa tridactyla</i>	Black-legged Kittiwake				S1S2B,S4N,S5M	4 Secure	47	46.6 ± 7.0	NB
A	<i>Calidris bairdii</i>	Baird's Sandpiper				S1S2M	3 Sensitive	101	4.5 ± 0.0	NB
A	<i>Cistothorus palustris</i>	Marsh Wren				S2B,S2M	3 Sensitive	66	4.0 ± 7.0	NB
A	<i>Mimus polyglottos</i>	Northern Mockingbird				S2B,S2M	3 Sensitive	141	4.0 ± 7.0	NB
A	<i>Toxostoma rufum</i>	Brown Thrasher				S2B,S2M	3 Sensitive	95	10.7 ± 7.0	NB
A	<i>Poocetes gramineus</i>	Vesper Sparrow				S2B,S2M	2 May Be At Risk	82	24.1 ± 7.0	NB



Taxonomic Group	Scientific Name	Common Name	COSEWIC	SARA	Prov Legal Prot	Prov Rarity Rank	Prov GS Rank	# recs	Distance (km)	Prov
A	<i>Anas strepera</i>	Gadwall				S2B,S3M	4 Secure	109	4.0 ± 0.0	NB
A	<i>Alca torda</i>	Razorbill				S2B,S3N,S3M	4 Secure	125	24.4 ± 15.0	NB
A	<i>Pinicola enucleator</i>	Pine Grosbeak				S2B,S4S5N,S4S5M	3 Sensitive	33	41.7 ± 7.0	NB
A	<i>Tringa solitaria</i>	Solitary Sandpiper				S2B,S5M	4 Secure	248	3.1 ± 4.0	NB
A	<i>Oceanodroma leucorhoa</i>	Leach's Storm-Petrel				S2B,SUM	3 Sensitive	51	38.5 ± 0.0	NB
A	<i>Chen caerulescens</i>	Snow Goose				S2M	4 Secure	7	12.2 ± 1.0	NB
A	<i>Phalacrocorax carbo</i>	Great Cormorant				S2N,S2M	4 Secure	266	7.2 ± 3.0	NB
A	<i>Somateria spectabilis</i>	King Eider				S2N,S2M	4 Secure	54	39.3 ± 0.0	NB
A	<i>Larus hyperboreus</i>	Glaucous Gull				S2N,S2M	4 Secure	155	3.1 ± 2.0	NB
A	<i>Asio otus</i>	Long-eared Owl				S2S3	5 Undetermined	17	10.7 ± 7.0	NB
A	<i>Picoides dorsalis</i>	American Three-toed Woodpecker				S2S3	3 Sensitive	11	57.3 ± 7.0	NB
A	<i>Salmo salar</i>	Atlantic Salmon				S2S3	2 May Be At Risk	57	21.2 ± 0.0	NB
A	<i>Anas clypeata</i>	Northern Shoveler				S2S3B,S2S3M	4 Secure	87	4.5 ± 0.0	NB
A	<i>Myiarchus crinitus</i>	Great Crested Flycatcher				S2S3B,S2S3M	3 Sensitive	226	7.5 ± 7.0	NB
A	<i>Petrochelidon pyrrhonota</i>	Cliff Swallow				S2S3B,S2S3M	3 Sensitive	566	5.8 ± 5.0	NB
A	<i>Pluvialis dominica</i>	American Golden-Plover				S2S3M	3 Sensitive	261	4.5 ± 0.0	NB
A	<i>Calcarius lapponicus</i>	Lapland Longspur				S2S3N,SUM	3 Sensitive	36	5.8 ± 0.0	NB
A	<i>Cephus grylle</i>	Black Guillemot				S3	4 Secure	623	9.3 ± 20.0	NB
A	<i>Loxia curvirostra</i>	Red Crossbill				S3	4 Secure	128	7.3 ± 7.0	NB
A	<i>Carduelis pinus</i>	Pine Siskin				S3	4 Secure	332	2.2 ± 7.0	NB
A	<i>Prosopium cylindraceum</i>	Round Whitefish				S3	4 Secure	1	71.3 ± 0.0	NB
A	<i>Salvelinus namaycush</i>	Lake Trout				S3	3 Sensitive	4	22.5 ± 0.0	NB
A	<i>Sorex maritimensis</i>	Maritime Shrew				S3	4 Secure	1	77.3 ± 0.0	NS
A	<i>Eptesicus fuscus</i>	Big Brown Bat				S3	3 Sensitive	49	5.2 ± 1.0	NB
A	<i>Cathartes aura</i>	Turkey Vulture				S3B,S3M	4 Secure	289	0.2 ± 0.0	NB
A	<i>Rallus limicola</i>	Virginia Rail				S3B,S3M	3 Sensitive	109	6.3 ± 1.0	NB
A	<i>Charadrius vociferus</i>	Killdeer				S3B,S3M	3 Sensitive	828	1.4 ± 0.0	NB
A	<i>Tringa semipalmata</i>	Willet				S3B,S3M	3 Sensitive	168	12.7 ± 0.0	NB
A	<i>Coccyzus erythrophthalmus</i>	Black-billed Cuckoo				S3B,S3M	4 Secure	182	2.2 ± 7.0	NB
A	<i>Vireo gilvus</i>	Warbling Vireo				S3B,S3M	4 Secure	227	2.2 ± 7.0	NB
A	<i>Piranga olivacea</i>	Scarlet Tanager				S3B,S3M	4 Secure	115	14.1 ± 7.0	NB
A	<i>Passerina cyanea</i>	Indigo Bunting				S3B,S3M	4 Secure	103	7.9 ± 7.0	NB
A	<i>Molothrus ater</i>	Brown-headed Cowbird				S3B,S3M	2 May Be At Risk	301	2.2 ± 7.0	NB
A	<i>Icterus galbula</i>	Baltimore Oriole				S3B,S3M	4 Secure	199	7.2 ± 2.0	NB
A	<i>Coccothraustes vespertinus</i>	Evening Grosbeak				S3B,S3S4N,SUM	3 Sensitive	298	7.5 ± 7.0	NB
A	<i>Somateria mollissima</i>	Common Eider				S3B,S4M,S3N	4 Secure	1726	3.5 ± 0.0	NB
A	<i>Dendroica tigrina</i>	Cape May Warbler				S3B,S4S5M	4 Secure	132	7.5 ± 7.0	NB
A	<i>Anas acuta</i>	Northern Pintail				S3B,S5M	3 Sensitive	53	10.7 ± 7.0	NB
A	<i>Mergus serrator</i>	Red-breasted Merganser				S3B,S5M,S4S5N	4 Secure	344	4.0 ± 7.0	NB
A	<i>Arenaria interpres</i>	Ruddy Turnstone				S3M	4 Secure	687	4.3 ± 0.0	NB
A	<i>Phalaropus fulicarius</i>	Red Phalarope				S3M	3 Sensitive	89	38.5 ± 0.0	NB
A	<i>Melanitta nigra</i>	Black Scoter				S3M,S1S2N	3 Sensitive	770	5.1 ± 1.0	NB
A	<i>Bucephala albeola</i>	Bufflehead				S3M,S2N	3 Sensitive	1120	3.3 ± 0.0	NB
A	<i>Calidris maritima</i>	Purple Sandpiper				S3M,S3N	4 Secure	241	11.9 ± 15.0	NB
A	<i>Uria lomvia</i>	Thick-billed Murre				S3N,S3M	5 Undetermined	66	22.1 ± 8.0	NB
A	<i>Synaptomys cooperi</i>	Southern Bog Lemming				S3S4	4 Secure	79	28.2 ± 1.0	NB
A	<i>Tyrannus tyrannus</i>	Eastern Kingbird				S3S4B,S3S4M	3 Sensitive	488	2.1 ± 5.0	NB
A	<i>Actitis macularia</i>	Spotted Sandpiper				S3S4B,S5M	4 Secure	874	2.1 ± 5.0	NB
A	<i>Gallinago delicata</i>	Wilson's Snipe				S3S4B,S5M	4 Secure	668	5.0 ± 0.0	NB
A	<i>Larus delawarensis</i>	Ring-billed Gull				S3S4B,S5M	4 Secure	242	3.1 ± 2.0	NB
A	<i>Dendroica striata</i>	Blackpoll Warbler				S3S4B,S5M	4 Secure	82	20.6 ± 0.0	NB

Taxonomic Group	Scientific Name	Common Name	COSEWIC	SARA	Prov Legal Prot	Prov Rarity Rank	Prov GS Rank	# recs	Distance (km)	Prov
A	<i>Pluvialis squatarola</i>	Black-bellied Plover				S3S4M	4 Secure	842	4.3 ± 0.0	NB
A	<i>Limosa haemastica</i>	Hudsonian Godwit				S3S4M	4 Secure	93	12.7 ± 0.0	NB
A	<i>Calidris pusilla</i>	Semipalmated Sandpiper				S3S4M	4 Secure	1984	4.3 ± 0.0	NB
A	<i>Calidris melanotos</i>	Pectoral Sandpiper				S3S4M	4 Secure	302	4.3 ± 0.0	NB
A	<i>Calidris alba</i>	Sanderling				S3S4M,S1N	3 Sensitive	823	4.5 ± 0.0	NB
A	<i>Morus bassanus</i>	Northern Gannet				SHB,\$5M	4 Secure	687	9.1 ± 0.0	NB
A	<i>Lanius ludovicianus</i>	Loggerhead Shrike				SXB,SXM	1 At Risk	1	96.8 ± 1.0	NB
	<i>Quercus macrocarpa</i> - <i>Acer rubrum</i> / <i>Onoclea sensibilis</i> - <i>Carex arcta</i>	Bur Oak - Red Maple / Sensitive Fern - Northern Clustered Sedge Forest				S2		1	62.9 ± 0.0	
C	<i>Acer saccharinum</i> / <i>Onoclea sensibilis</i> - <i>Lysimachia terrestris</i>	Silver Maple / Sensitive Fern - Swamp Yellow Loosestrife Forest				S3		1	57.9 ± 0.0	NB
	<i>Acer saccharum</i> - <i>Fraxinus americana</i> / <i>Polystichum</i>	Sugar Maple - White Ash / Christmas Fern Forest				S3S4		1	19.4 ± 0.0	NB
C	<i>acrostichoides</i> Forest									
I	<i>Cicindela marginipennis</i>	Cobblestone Tiger Beetle	Endangered	Endangered	Endangered	S1	1 At Risk	34	65.2 ± 0.0	NB
I	<i>Gomphus ventricosus</i>	Skillet Clubtail	Endangered		Endangered	S1S2	2 May Be At Risk	49	50.4 ± 0.0	NB
I	<i>Ophiogomphus howei</i>	Pygmy Snaketail	Special Concern	Special Concern	Special Concern	S2	2 May Be At Risk	3	63.0 ± 0.0	NB
I	<i>Alasmidonta varicosa</i>	Brook Floater	Special Concern		Special Concern	S2	3 Sensitive	2	93.6 ± 0.0	NB
I	<i>Lampsilis cariosa</i>	Yellow Lampmussel	Special Concern	Special Concern	Special Concern	S2	3 Sensitive	100	24.9 ± 0.0	NB
I	<i>Bombus terricola</i>	Yellow-banded Bumblebee	Special Concern			S3?	3 Sensitive	15	34.2 ± 0.0	NB
I	<i>Danaus plexippus</i>	Monarch	Special Concern	Special Concern	Special Concern	S3B,\$3M	3 Sensitive	91	6.4 ± 0.0	NB
I	<i>Appalachina sayana</i>	Spike-lip Crater	Not At Risk			S3?		2	2.1 ± 1.0	NB
I	<i>Haematopota rara</i>	Shy Cleg				S1	5 Undetermined	1	84.7 ± 1.0	NB
I	<i>Lycaena dorcas</i>	Dorcas Copper				S1	2 May Be At Risk	1	79.0 ± 0.0	NB
I	<i>Erora laeta</i>	Early Hairstreak				S1	2 May Be At Risk	1	77.6 ± 1.0	NS
I	<i>Celithemis martha</i>	Martha's Pennant				S1	5 Undetermined	1	16.9 ± 0.0	NB
I	<i>Arigomphus furcifer</i>	Lilypad Clubtail				S1	5 Undetermined	6	56.3 ± 0.0	NB
I	<i>Polites origenes</i>	Crossline Skipper				S1?	5 Undetermined	5	44.0 ± 0.0	NB
I	<i>Plebejus saepiolus</i>	Greenish Blue				S1S2	4 Secure	4	58.1 ± 0.0	NB
I	<i>Ophiogomphus colubrinus</i>	Boreal Snaketail				S1S2	2 May Be At Risk	35	38.8 ± 1.0	NB
I	<i>Brachyleptura circumdata</i>	a Longhorned Beetle				S2		6	66.4 ± 0.0	NB
I	<i>Satyrrium calanus</i>	Banded Hairstreak				S2	3 Sensitive	14	75.6 ± 1.0	NS
I	<i>Satyrrium calanus falacer</i>	Banded Hairstreak				S2	4 Secure	4	83.0 ± 1.0	NB
I	<i>Strymon melinus</i>	Grey Hairstreak				S2	4 Secure	6	26.4 ± 0.0	NB
I	<i>Aeshna clepsydra</i>	Mottled Darner				S2	3 Sensitive	15	8.0 ± 1.0	NB
I	<i>Somatochlora tenebrosa</i>	Clamp-Tipped Emerald				S2	5 Undetermined	6	82.9 ± 1.0	NB
I	<i>Ladona exusta</i>	White Corporal				S2	5 Undetermined	11	78.6 ± 1.0	NB
I	<i>Hetaerina americana</i>	American Rubyspot				S2	3 Sensitive	2	92.8 ± 0.0	NB
I	<i>Ischnura posita</i>	Fragile Forktail				S2	2 May Be At Risk	21	65.5 ± 0.0	NB
I	<i>Callophrys henrici</i>	Henry's Elfin				S2S3	4 Secure	14	77.6 ± 1.0	NS
I	<i>Agonum excavatum</i>	a Ground Beetle				S3	4 Secure	1	71.0 ± 0.0	NB
I	<i>Badister neopulchellus</i>	a Ground Beetle				S3	4 Secure	1	71.0 ± 0.0	NB
I	<i>Calathus gregarius</i>	a Ground Beetle				S3	4 Secure	1	84.4 ± 1.0	NB
I	<i>Clivina americana</i>	a Ground Beetle				S3	4 Secure	1	71.0 ± 0.0	NB
I	<i>Elaphrus americanus</i>	a Ground Beetle				S3	4 Secure	1	71.0 ± 0.0	NB
I	<i>Olisthopus parmatus</i>	a Ground Beetle				S3	4 Secure	1	66.5 ± 0.0	NB
I	<i>Paratichys scitulus</i>	a Ground Beetle				S3	5 Undetermined	1	71.0 ± 0.0	NB

Taxonomic Group	Scientific Name	Common Name	COSEWIC	SARA	Prov Legal Prot	Prov Rarity Rank	Prov GS Rank	# recs	Distance (km)	Prov
I	<i>Sphaeroderus nitidicollis</i>	a Ground Beetle				S3	4 Secure	1	66.5 ± 0.0	NB
I	<i>Coccinella hieroglyphica kirbyi</i>	a Ladybird Beetle				S3	4 Secure	1	6.9 ± 1.0	NB
I	<i>Hippodamia parenthesis</i>	Parenthesis Lady Beetle				S3	4 Secure	2	6.9 ± 1.0	NB
I	<i>Stenocorus vittigera</i>	a Longhorned Beetle				S3		1	71.0 ± 0.0	NB
I	<i>Hesperia sassacus</i>	Indian Skipper				S3	4 Secure	4	79.3 ± 0.0	NB
I	<i>Euphyes bimacula</i>	Two-spotted Skipper				S3	4 Secure	9	55.9 ± 0.0	NB
I	<i>Lycaena hyllus</i>	Bronze Copper				S3	3 Sensitive	4	27.7 ± 1.0	NB
I	<i>Satyrium acadica</i>	Acadian Hairstreak				S3	4 Secure	20	6.9 ± 1.0	NB
I	<i>Callophrys polios</i>	Hoary Elfin				S3	4 Secure	8	6.9 ± 1.0	NB
I	<i>Plebejus idas</i>	Northern Blue				S3	4 Secure	9	18.6 ± 1.0	NB
I	<i>Plebejus idas empetri</i>	Crowberry Blue				S3	4 Secure	6	15.5 ± 1.0	NB
I	<i>Speyeria aphrodite</i>	Aphrodite Fritillary				S3	4 Secure	22	6.9 ± 1.0	NB
I	<i>Boloria bellona</i>	Meadow Fritillary				S3	4 Secure	31	36.2 ± 0.0	NB
I	<i>Polygonia satyrus</i>	Satyr Comma				S3	4 Secure	9	21.8 ± 1.0	NB
I	<i>Polygonia gracilis</i>	Hoary Comma				S3	4 Secure	2	82.5 ± 1.0	NB
I	<i>Nymphalis l-album</i>	Compton Tortoiseshell				S3	4 Secure	20	6.9 ± 10.0	NB
I	<i>Gomphus vastus</i>	Cobra Clubtail				S3	3 Sensitive	57	30.0 ± 0.0	NB
I	<i>Gomphus abbreviatus</i>	Spine-crowned Clubtail				S3	4 Secure	22	17.4 ± 0.0	NB
I	<i>Gomphaeschna furcillata</i>	Harlequin Darner				S3	5 Undetermined	14	82.9 ± 1.0	NB
I	<i>Dorocordulia lepida</i>	Petite Emerald				S3	4 Secure	38	2.4 ± 0.0	NB
I	<i>Somatochlora cingulata</i>	Lake Emerald				S3	4 Secure	9	2.4 ± 0.0	NB
I	<i>Somatochlora forcipata</i>	Forcipate Emerald				S3	4 Secure	15	82.6 ± 1.0	NB
I	<i>Williamsonia fletcheri</i>	Ebony Boghaunter				S3	4 Secure	7	58.8 ± 0.0	NB
I	<i>Lestes eurinus</i>	Amber-Winged Spreadwing				S3	4 Secure	7	20.9 ± 1.0	NB
I	<i>Lestes vigilax</i>	Swamp Spreadwing				S3	3 Sensitive	32	2.2 ± 0.0	NB
I	<i>Enallagma geminatum</i>	Skimming Bluet				S3	5 Undetermined	12	17.4 ± 0.0	NB
I	<i>Enallagma signatum</i>	Orange Bluet				S3	4 Secure	11	56.5 ± 0.0	NB
I	<i>Stylurus scudderi</i>	Zebra Clubtail				S3	4 Secure	71	30.0 ± 0.0	NB
I	<i>Alasmidonta undulata</i>	Triangle Floater				S3	3 Sensitive	44	11.8 ± 0.0	NB
I	<i>Leptodea ochracea</i>	Tidewater Mucket				S3	4 Secure	61	11.6 ± 1.0	NB
I	<i>Neohelix albolabris</i>	Whitelip				S3		2	49.9 ± 0.0	NB
I	<i>Spurwinkia salsa</i>	Saltmarsh Hydrobe				S3		34	2.3 ± 0.0	NB
I	<i>Pantala hymenaea</i>	Spot-Winged Glider				S3B,S3M	4 Secure	4	18.4 ± 1.0	NB
I	<i>Satyrium liparops</i>	Striped Hairstreak				S3S4	4 Secure	2	80.2 ± 0.0	NB
I	<i>Satyrium liparops strigosum</i>	Striped Hairstreak				S3S4	4 Secure	1	86.4 ± 10.0	NB
I	<i>Cupido comyntas</i>	Eastern Tailed Blue				S3S4	4 Secure	7	9.3 ± 5.0	NB
I	<i>Coccinella transversoguttata richardsoni</i>	Transverse Lady Beetle				SH	2 May Be At Risk	2	6.9 ± 1.0	NB
N	<i>Erioderma mollissimum</i>	Graceful Felt Lichen	Endangered		Endangered	SH	2 May Be At Risk	1	80.7 ± 1.0	NB
N	<i>Erioderma pedicellatum</i> (Atlantic pop.)	Boreal Felt Lichen - Atlantic pop.	Endangered	Endangered	Endangered	SH	1 At Risk	3	85.2 ± 1.0	NB
N	<i>Peltigera hydrothyria</i>	Eastern Waterfan	Threatened			S1	5 Undetermined	4	80.3 ± 1.0	NB
N	<i>Anzia colpodes</i>	Black-foam Lichen	Threatened			S1S2	5 Undetermined	2	84.9 ± 1.0	NB
N	<i>Degelia plumbea</i>	Blue Felt Lichen	Special Concern	Special Concern	Special Concern	S1	2 May Be At Risk	4	84.1 ± 5.0	NB
N	<i>Pseudevernia cladonia</i>	Ghost Antler Lichen	Not At Risk			S2S3	5 Undetermined	23	10.3 ± 0.0	NB
N	<i>Bryum muehlenbeckii</i>	Muehlenbeck's Bryum Moss				S1	2 May Be At Risk	1	10.2 ± 1.0	NB
N	<i>Dicranoweisia crispula</i>	Mountain Thatch Moss				S1	2 May Be At Risk	1	88.6 ± 0.0	NB
N	<i>Didymodon rigidulus</i> var. <i>gracilis</i>	a moss				S1	2 May Be At Risk	1	83.7 ± 1.0	NB

Taxonomic Group	Scientific Name	Common Name	COSEWIC	SARA	Prov Legal Prot	Prov Rarity Rank	Prov GS Rank	# recs	Distance (km)	Prov
N	<i>Sphagnum macrophyllum</i>	Sphagnum				S1	2 May Be At Risk	2	20.9 ± 0.0	NB
N	<i>Syntrichia ruralis</i>	a Moss				S1	2 May Be At Risk	1	62.8 ± 0.0	NB
N	<i>Coscinodon cribrosus</i>	Sieve-Toothed Moss				S1	2 May Be At Risk	1	8.3 ± 0.0	NB
N	<i>Cladonia metacorallifera</i>	Reptilian Pixie-cup Lichen				S1	5 Undetermined	5	77.6 ± 1.0	NB
N	<i>Coccocarpia palmicola</i>	Salted Shell Lichen				S1	2 May Be At Risk	1	92.0 ± 1.0	NB
N	<i>Peltigera collina</i>	Tree Pelt Lichen				S1	2 May Be At Risk	1	92.6 ± 10.0	NB
N	<i>Peltigera malacea</i>	Veinless Pelt Lichen				S1	5 Undetermined	1	80.1 ± 1.0	NB
N	<i>Bryoria bicolor</i>	Electrified Horsehair Lichen				S1	2 May Be At Risk	1	80.1 ± 1.0	NB
N	<i>Hygrobiella laxifolia</i>	Lax Notchwort				S1?	6 Not Assessed	1	77.7 ± 1.0	NB
N	<i>Atrichum angustatum</i>	Lesser Smoothcap Moss				S1?	2 May Be At Risk	1	91.8 ± 3.0	NS
N	<i>Bartramia ithyphylla</i>	Straight-leaved Apple Moss				S1?	2 May Be At Risk	2	77.7 ± 0.0	NB
N	<i>Calliergon trifarium</i>	Three-ranked Moss				S1?	2 May Be At Risk	1	15.1 ± 0.0	NB
N	<i>Dichelyma falcatum</i>	a Moss				S1?	2 May Be At Risk	2	26.2 ± 1.0	NB
N	<i>Dicranum bonjeanii</i>	Bonjean's Broom Moss				S1?	2 May Be At Risk	1	84.7 ± 1.0	NB
N	<i>Dicranum condensatum</i>	Condensed Broom Moss				S1?	2 May Be At Risk	1	88.4 ± 0.0	NB
N	<i>Entodon brevisetus</i>	a Moss				S1?	2 May Be At Risk	1	89.5 ± 10.0	NB
N	<i>Eurhynchium hians</i>	Light Beaked Moss				S1?	2 May Be At Risk	3	59.9 ± 0.0	NB
N	<i>Homomallium adnatum</i>	Adnate Hairy-gray Moss				S1?	2 May Be At Risk	2	89.5 ± 10.0	NB
N	<i>Plagiothecium latebricola</i>	Alder Silk Moss				S1?	2 May Be At Risk	2	13.8 ± 0.0	NB
N	<i>Racomitrium ericoides</i>	a Moss				S1?	2 May Be At Risk	1	85.6 ± 3.0	NB
N	<i>Rhytidium rugosum</i>	Wrinkle-leaved Moss				S1?	2 May Be At Risk	2	61.7 ± 0.0	NB
N	<i>Splachnum pennsylvanicum</i>	Southern Dung Moss				S1?	2 May Be At Risk	1	82.5 ± 1.0	NB
N	<i>Platylomella lescurii</i>	a Moss				S1?	5 Undetermined	1	82.2 ± 1.0	NB
N	<i>Cladopodiella francisci</i>	Holt's Notchwort				S1S2	6 Not Assessed	4	83.7 ± 1.0	NB
N	<i>Harpanthus flotovianus</i>	Great Mountain Flapwort				S1S2	6 Not Assessed	2	79.6 ± 1.0	NB
N	<i>Jungermannia obovata</i>	Egg Flapwort				S1S2	6 Not Assessed	2	9.1 ± 0.0	NB
N	<i>Pallavicinia lyellii</i>	Lyell's Ribbonwort				S1S2	6 Not Assessed	2	15.9 ± 1.0	NB
N	<i>Radula tenax</i>	Tenacious Scalewort				S1S2	6 Not Assessed	1	88.7 ± 0.0	NB
N	<i>Reboulia hemisphaerica</i>	Purple-margined Liverwort				S1S2	6 Not Assessed	1	88.6 ± 1.0	NB
N	<i>Brachythecium acuminatum</i>	Acuminate Ragged Moss				S1S2	5 Undetermined	6	56.7 ± 100.0	NB
N	<i>Bryum salinum</i>	a Moss				S1S2	2 May Be At Risk	2	44.0 ± 1.0	NB
N	<i>Campylium radicale</i>	Long-stalked Fine Wet Moss				S1S2	5 Undetermined	1	86.2 ± 1.0	NB
N	<i>Tortula obtusifolia</i>	a Moss				S1S2	2 May Be At Risk	1	40.5 ± 0.0	NB
N	<i>Distichium inclinatum</i>	Inclined Iris Moss				S1S2	2 May Be At Risk	5	83.5 ± 0.0	NB
N	<i>Ditrichum pallidum</i>	Pale Cow-hair Moss				S1S2	2 May Be At Risk	3	69.3 ± 3.0	NS
N	<i>Drummondia prorepens</i>	a Moss				S1S2	2 May Be At Risk	1	86.8 ± 0.0	NS
N	<i>Hygrohypnum bestii</i>	Best's Brook Moss				S1S2	3 Sensitive	5	69.2 ± 0.0	NB
N	<i>Sphagnum platyphyllum</i>	Flat-leaved Peat Moss				S1S2	5 Undetermined	1	97.5 ± 1.0	NB
N	<i>Timmia norvegica</i>	a moss				S1S2	2 May Be At Risk	3	48.0 ± 0.0	NB
N	<i>Timmia norvegica var. excurrens</i>	a moss				S1S2	2 May Be At Risk	1	83.5 ± 0.0	NB
N	<i>Tomentypnum falcifolium</i>	Sickle-leaved Golden Moss				S1S2	2 May Be At Risk	1	35.3 ± 1.0	NB
N	<i>Tortella humilis</i>	Small Crisp Moss				S1S2	2 May Be At Risk	7	78.5 ± 0.0	NB
N	<i>Pseudotaxiphyllum distichaceum</i>	a Moss				S1S2	2 May Be At Risk	3	44.0 ± 1.0	NB
N	<i>Hamatocaulis vernicosus</i>	a Moss				S1S2	2 May Be At Risk	1	20.9 ± 100.0	NB



Taxonomic Group	Scientific Name	Common Name	COSEWIC	SARA	Prov Legal Prot	Prov Rarity Rank	Prov GS Rank	# recs	Distance (km)	Prov
N	<i>Bryohaplocladium microphyllum</i>	Tiny-leaved Haplocladium Moss				S1S2	2 May Be At Risk	1	69.3 ± 3.0	NS
N	<i>Umbilicaria vellea</i>	Grizzled Rocktripe Lichen				S1S2	5 Undetermined	1	83.7 ± 1.0	NB
N	<i>Peltigera scabrosa</i>	Greater Toad Pelt Lichen				S1S2	2 May Be At Risk	4	89.3 ± 1.0	NB
N	<i>Calypogeia neesiana</i>	Nees' Pouchwort				S1S3	6 Not Assessed	1	18.7 ± 1.0	NB
N	<i>Cephaloziella elachista</i>	Spurred Threadwort				S1S3	6 Not Assessed	1	15.2 ± 5.0	NB
N	<i>Porella pinnata</i>	Pinnate Scalewort				S1S3	6 Not Assessed	1	25.5 ± 1.0	NB
N	<i>Tritomaria scitula</i>	Mountain Notchwort				S1S3	6 Not Assessed	1	91.2 ± 1.0	NB
N	<i>Amphidium mougeotii</i>	a Moss				S2	3 Sensitive	12	77.8 ± 0.0	NB
N	<i>Anomodon viticulosus</i>	a Moss				S2	2 May Be At Risk	6	8.7 ± 1.0	NB
N	<i>Cirriophyllum pilliferum</i>	Hair-pointed Moss				S2	3 Sensitive	4	64.2 ± 0.0	NB
N	<i>Cynodontium strumiferum</i>	Strumose Dogtooth Moss				S2	3 Sensitive	1	88.1 ± 8.0	NB
N	<i>Dicranella palustris</i>	Drooping-Leaved Fork Moss				S2	3 Sensitive	10	42.6 ± 100.0	NB
N	<i>Didymodon ferrugineus</i>	a moss				S2	3 Sensitive	2	17.4 ± 1.0	NB
N	<i>Anomodon tristis</i>	a Moss				S2	2 May Be At Risk	4	84.1 ± 1.0	NB
N	<i>Hypnum pratense</i>	Meadow Plait Moss				S2	3 Sensitive	1	11.8 ± 0.0	NB
N	<i>Isopterygiopsis pulchella</i>	Neat Silk Moss				S2	3 Sensitive	7	82.9 ± 0.0	NB
N	<i>Meesia triquetra</i>	Three-ranked Cold Moss				S2	2 May Be At Risk	1	56.7 ± 100.0	NB
N	<i>Physcomitrium immersum</i>	a Moss				S2	3 Sensitive	6	25.5 ± 1.0	NB
N	<i>Platydictya jungermannioides</i>	False Willow Moss				S2	3 Sensitive	3	79.7 ± 0.0	NB
N	<i>Pohlia elongata</i>	Long-necked Nodding Moss				S2	3 Sensitive	10	78.5 ± 0.0	NB
N	<i>Seligeria calcarea</i>	Chalk Brittle Moss				S2	3 Sensitive	2	89.3 ± 0.0	NB
N	<i>Sphagnum centrale</i>	Central Peat Moss				S2	3 Sensitive	7	78.5 ± 0.0	NB
N	<i>Sphagnum lindbergii</i>	Lindberg's Peat Moss				S2	3 Sensitive	7	15.9 ± 1.0	NB
N	<i>Sphagnum flexuosum</i>	Flexuous Peatmoss				S2	3 Sensitive	2	86.1 ± 0.0	NB
N	<i>Tayloria serrata</i>	Serrate Trumpet Moss				S2	3 Sensitive	7	29.2 ± 1.0	NB
N	<i>Tetradontium brownianum</i>	Little Georgia				S2	3 Sensitive	7	83.1 ± 1.0	NB
N	<i>Tetraplodon mnioides</i>	Entire-leaved Nitrogen Moss				S2	3 Sensitive	3	37.5 ± 0.0	NB
N	<i>Thamnobryum alleghaniense</i>	a Moss				S2	3 Sensitive	11	47.9 ± 0.0	NB
N	<i>Tortula mucronifolia</i>	Mucronate Screw Moss				S2	3 Sensitive	1	7.8 ± 0.0	NB
N	<i>Ulota phyllantha</i>	a Moss				S2	3 Sensitive	5	44.0 ± 1.0	NB
N	<i>Anomobryum filiforme</i>	a moss				S2	5 Undetermined	5	46.9 ± 0.0	NB
N	<i>Cladonia macrophylla</i>	Fig-leaved Lichen				S2	5 Undetermined	3	86.8 ± 1.0	NB
N	<i>Nephroma laevigatum</i>	Mustard Kidney Lichen				S2	2 May Be At Risk	2	77.5 ± 0.0	NS
N	<i>Andreaea rothii</i>	a Moss				S2?	3 Sensitive	6	18.3 ± 0.0	NB
N	<i>Anomodon minor</i>	Blunt-leaved Anomodon Moss				S2?	2 May Be At Risk	1	95.6 ± 1.0	NB
N	<i>Brachythecium digastrum</i>	a Moss				S2?	3 Sensitive	2	51.9 ± 0.0	NB
N	<i>Bryum pallescens</i>	Pale Bryum Moss				S2?	5 Undetermined	2	7.1 ± 1.0	NB
N	<i>Dichelyma capillaceum</i>	Hairlike Dichelyma Moss				S2?	3 Sensitive	1	89.9 ± 3.0	NB
N	<i>Dicranum spurium</i>	Spurred Broom Moss				S2?	3 Sensitive	2	30.2 ± 0.0	NB
N	<i>Hygrohypnum montanum</i>	a Moss				S2?	3 Sensitive	2	61.1 ± 1.0	NB
N	<i>Schistostega pennata</i>	Luminous Moss				S2?	3 Sensitive	3	42.6 ± 100.0	NB
N	<i>Seligeria campylopoda</i>	a Moss				S2?	3 Sensitive	1	20.9 ± 100.0	NB
N	<i>Seligeria diversifolia</i>	a Moss				S2?	3 Sensitive	2	46.9 ± 0.0	NB
N	<i>Sphagnum angermanicum</i>	a Peatmoss				S2?	3 Sensitive	3	33.2 ± 10.0	NB
N	<i>Plagiomnium rostratum</i>	Long-beaked Leafy Moss				S2?	3 Sensitive	6	47.9 ± 0.0	NB
N	<i>Ramalina pollinaria</i>	Chalky Ramalina Lichen				S2?	5 Undetermined	1	86.9 ± 1.0	NB
N	<i>Nephroma arcticum</i>	Arctic Kidney Lichen				S2?	3 Sensitive	1	80.8 ± 1.0	NB

Taxonomic Group	Scientific Name	Common Name	COSEWIC	SARA	Prov Legal Prot	Prov Rarity Rank	Prov GS Rank	# recs	Distance (km)	Prov
N	<i>Bryum uliginosum</i>	a Moss				S2S3	3 Sensitive	2	19.2 ± 4.0	NB
N	<i>Buxbaumia aphylla</i>	Brown Shield Moss				S2S3	3 Sensitive	2	86.1 ± 15.0	NB
N	<i>Calliergonella cuspidata</i>	Common Large Wetland Moss				S2S3	3 Sensitive	7	4.3 ± 0.0	NB
N	<i>Campyllum polygamum</i>	a Moss				S2S3	3 Sensitive	1	81.1 ± 0.0	NB
N	<i>Palustriella falcata</i>	a Moss				S2S3	3 Sensitive	2	77.8 ± 0.0	NB
N	<i>Didymodon rigidulus</i>	Rigid Screw Moss				S2S3	3 Sensitive	9	83.5 ± 0.0	NB
N	<i>Ephemerum serratum</i>	a Moss				S2S3	3 Sensitive	2	62.4 ± 0.0	NB
N	<i>Fissidens bushii</i>	Bush's Pocket Moss				S2S3	3 Sensitive	1	91.8 ± 3.0	NS
N	<i>Orthotrichum speciosum</i>	Showy Bristle Moss				S2S3	5 Undetermined	2	72.8 ± 2.0	NB
N	<i>Pohlia prolifera</i>	Cottony Nodding Moss				S2S3	3 Sensitive	4	83.2 ± 1.0	NB
N	<i>Racomitrium fasciculare</i>	a Moss				S2S3	3 Sensitive	4	77.8 ± 0.0	NB
N	<i>Racomitrium affine</i>	a Moss				S2S3	3 Sensitive	1	88.7 ± 1.0	NB
N	<i>Saelania glaucescens</i>	Blue Dew Moss				S2S3	3 Sensitive	2	88.6 ± 0.0	NB
N	<i>Scorpidium scorpioides</i>	Hooked Scorpion Moss				S2S3	3 Sensitive	4	3.3 ± 1.0	NB
N	<i>Sphagnum subfulvum</i>	a Peatmoss				S2S3	2 May Be At Risk	3	35.3 ± 1.0	NB
N	<i>Taxiphyllum deplanatum</i>	Imbricate Yew-leaved Moss				S2S3	3 Sensitive	3	44.0 ± 1.0	NB
N	<i>Zygodon viridissimus</i>	a Moss				S2S3	2 May Be At Risk	4	80.6 ± 5.0	NS
N	<i>Schistidium agassizii</i>	Elf Bloom Moss				S2S3	3 Sensitive	5	72.8 ± 2.0	NB
N	<i>Loeskeobryum brevirostre</i>	a Moss				S2S3	3 Sensitive	13	69.8 ± 2.0	NB
N	<i>Cyrtomnium hymenophylloides</i>	Short-pointed Lantern Moss				S2S3	3 Sensitive	6	77.8 ± 0.0	NB
N	<i>Cladonia acuminata</i>	Scantly Clad Pixie Lichen				S2S3	5 Undetermined	2	80.7 ± 1.0	NB
N	<i>Cladonia ramulosa</i>	Bran Lichen				S2S3	5 Undetermined	4	84.9 ± 1.0	NB
N	<i>Cladonia sulphurina</i>	Greater Sulphur-cup Lichen				S2S3	5 Undetermined	1	94.0 ± 1.0	NB
N	<i>Parmeliopsis ambigua</i>	Green Starburst Lichen				S2S3	5 Undetermined	1	78.3 ± 1.0	NB
N	<i>Sphaerophorus globosus</i>	Northern Coral Lichen				S2S3	3 Sensitive	5	77.0 ± 1.0	NB
N	<i>Cynodontium tenellum</i>	Delicate Dogtooth Moss				S3	3 Sensitive	1	44.0 ± 1.0	NB
N	<i>Hypnum curvifolium</i>	Curved-leaved Plait Moss				S3	3 Sensitive	11	73.9 ± 3.0	NS
N	<i>Tortella fragilis</i>	Fragile Twisted Moss				S3	3 Sensitive	1	83.5 ± 0.0	NB
N	<i>Schistidium maritimum</i>	a Moss				S3	4 Secure	7	44.0 ± 1.0	NB
N	<i>Hymenostylium recurvirostre</i>	Hymenostylium Moss				S3	3 Sensitive	4	83.2 ± 1.0	NB
N	<i>Solorina saccata</i>	Woodland Owl Lichen				S3	5 Undetermined	6	78.3 ± 1.0	NB
N	<i>Normandina pulchella</i>	Rimmed Elf-ear Lichen				S3	5 Undetermined	3	79.5 ± 1.0	NB
N	<i>Cladonia farinacea</i>	Farinose Pixie Lichen				S3	5 Undetermined	5	86.8 ± 1.0	NB
N	<i>Leptogium lichenoides</i>	Tattered Jellyskin Lichen				S3	5 Undetermined	6	83.7 ± 1.0	NB
N	<i>Nephroma bellum</i>	Naked Kidney Lichen				S3	4 Secure	3	79.8 ± 1.0	NB
N	<i>Peltigera degenii</i>	Lustrous Pelt Lichen				S3	5 Undetermined	3	80.3 ± 1.0	NB
N	<i>Usnea strigosa</i>	Bushy Beard Lichen				S3	5 Undetermined	1	89.9 ± 1.0	NB
N	<i>Leptogium laceroides</i>	Short-bearded Jellyskin Lichen				S3	3 Sensitive	2	85.8 ± 1.0	NB
N	<i>Peltigera membranacea</i>	Membranous Pelt Lichen				S3	5 Undetermined	6	78.3 ± 1.0	NB
N	<i>Cladonia carneola</i>	Crowned Pixie-cup Lichen				S3	5 Undetermined	1	86.8 ± 1.0	NB
N	<i>Cladonia deformis</i>	Lesser Sulphur-cup Lichen				S3	4 Secure	5	77.6 ± 1.0	NB
N	<i>Aulacomnium androgynum</i>	Little Groove Moss				S3?	4 Secure	7	69.3 ± 3.0	NS
N	<i>Dicranella rufescens</i>	Red Forklet Moss				S3?	5 Undetermined	2	83.5 ± 0.0	NB
N	<i>Rhytidadelphus loreus</i>	Lanky Moss				S3?	2 May Be At Risk	2	83.7 ± 1.0	NB
N	<i>Sphagnum lescurii</i>	a Peatmoss				S3?	5 Undetermined	5	7.8 ± 0.0	NB
N	<i>Stereocaulon subcoralloides</i>	Coralloid Foam Lichen				S3?	5 Undetermined	1	86.9 ± 1.0	NB

Taxonomic Group	Scientific Name	Common Name	COSEWIC	SARA	Prov Legal Prot	Prov Rarity Rank	Prov GS Rank	# recs	Distance (km)	Prov
N	<i>Anomodon rugelii</i>	Rugel's Anomodon Moss				S3S4	3 Sensitive	2	86.5 ± 1.0	NS
N	<i>Barbula convoluta</i>	Lesser Bird's-claw Beard Moss				S3S4	4 Secure	1	93.3 ± 8.0	NB
N	<i>Brachythecium velutinum</i>	Velvet Ragged Moss				S3S4	4 Secure	3	79.5 ± 1.0	NB
N	<i>Dicranella cerviculata</i>	a Moss				S3S4	3 Sensitive	5	44.0 ± 1.0	NB
N	<i>Dicranum majus</i>	Greater Broom Moss				S3S4	4 Secure	19	37.5 ± 0.0	NB
N	<i>Dicranum leioneuron</i>	a Dicranum Moss				S3S4	4 Secure	1	83.2 ± 0.0	NB
N	<i>Encalypta ciliata</i>	Fringed Extinguisher Moss				S3S4	3 Sensitive	1	83.8 ± 0.0	NB
N	<i>Fissidens bryoides</i>	Lesser Pocket Moss				S3S4	4 Secure	2	17.8 ± 5.0	NB
N	<i>Heterocladium dimorphum</i>	Dimorphous Tangle Moss				S3S4	4 Secure	4	72.8 ± 2.0	NB
N	<i>Isopterygiopsis muelleriana</i>	a Moss				S3S4	4 Secure	18	81.5 ± 0.0	NB
N	<i>Myurella julacea</i>	Small Mouse-tail Moss				S3S4	4 Secure	3	83.2 ± 0.0	NB
N	<i>Physcomitrium pyriforme</i>	Pear-shaped Urn Moss				S3S4	3 Sensitive	5	59.9 ± 0.0	NB
N	<i>Pogonatum dentatum</i>	Mountain Hair Moss				S3S4	4 Secure	2	44.0 ± 1.0	NB
N	<i>Sphagnum quinquefarium</i>	Five-ranked Peat Moss				S3S4	4 Secure	1	83.5 ± 0.0	NB
N	<i>Sphagnum torreyanum</i>	a Peatmoss				S3S4	4 Secure	5	20.6 ± 0.0	NB
N	<i>Sphagnum austinii</i>	Austin's Peat Moss				S3S4	4 Secure	1	20.4 ± 1.0	NB
N	<i>Sphagnum contortum</i>	Twisted Peat Moss				S3S4	4 Secure	1	4.4 ± 0.0	NB
N	<i>Splachnum rubrum</i>	Red Collar Moss				S3S4	4 Secure	1	24.9 ± 1.0	NB
N	<i>Tetraphis geniculata</i>	Geniculate Four-tooth Moss				S3S4	4 Secure	12	14.0 ± 0.0	NB
N	<i>Tetraplodon angustatus</i>	Toothed-leaved Nitrogen Moss				S3S4	4 Secure	2	44.0 ± 1.0	NB
N	<i>Weissia controversa</i>	Green-Cushioned Weissia				S3S4	4 Secure	2	77.6 ± 0.0	NS
N	<i>Abietinella abietina</i>	Wiry Fern Moss				S3S4	4 Secure	1	83.5 ± 0.0	NB
N	<i>Trichostomum tenuirostre</i>	Acid-Soil Moss				S3S4	4 Secure	6	69.6 ± 3.0	NS
N	<i>Pannaria rubiginosa</i>	Brown-eyed Shingle Lichen				S3S4	3 Sensitive	2	82.6 ± 1.0	NB
N	<i>Ramalina thrausta</i>	Angelhair Ramalina Lichen				S3S4	5 Undetermined	11	77.0 ± 1.0	NB
N	<i>Hypogymnia vittata</i>	Slender Monk's Hood Lichen				S3S4	4 Secure	22	77.0 ± 1.0	NB
N	<i>Cladonia floerkeana</i>	Gritty British Soldiers Lichen				S3S4	4 Secure	3	78.7 ± 1.0	NB
N	<i>Hypocenomyce friesii</i>	a Lichen				S3S4	5 Undetermined	1	83.7 ± 1.0	NB
N	<i>Melanelia panniformis</i>	Shingled Camouflage Lichen				S3S4	5 Undetermined	4	80.1 ± 1.0	NB
N	<i>Nephroma parile</i>	Powdery Kidney Lichen				S3S4	4 Secure	6	83.7 ± 1.0	NB
N	<i>Protopannaria pezizoides</i>	Brown-gray Moss-shingle Lichen				S3S4	4 Secure	11	78.3 ± 1.0	NB
N	<i>Pseudocyphellaria perpetua</i>	Gilded Specklebelly Lichen				S3S4	3 Sensitive	2	85.6 ± 1.0	NB
N	<i>Anaptychia palmulata</i>	Shaggy Fringed Lichen				S3S4	3 Sensitive	3	85.6 ± 1.0	NB
N	<i>Peltigera neopolydactyla</i>	Undulating Pelt Lichen				S3S4	5 Undetermined	8	78.3 ± 1.0	NB
N	<i>Cladonia cariosa</i>	Lesser Ribbed Pixie Lichen				S3S4	4 Secure	3	88.6 ± 1.0	NB
N	<i>Hypocenomyce scalaris</i>	Common Clam Lichen				S3S4	5 Undetermined	1	86.9 ± 1.0	NB
N	<i>Dermatocarpon luridum</i>	Brookside Stippleback Lichen				S3S4	4 Secure	5	77.6 ± 1.0	NB
N	<i>Grimmia anodon</i>	Toothless Grimmia Moss				SH	5 Undetermined	2	5.5 ± 10.0	NB
N	<i>Leucodon brachypus</i>	a Moss				SH	2 May Be At Risk	8	74.4 ± 100.0	NB
N	<i>Thelia hirtella</i>	a Moss				SH	2 May Be At Risk	2	56.7 ± 100.0	NB
N	<i>Cyrto-hypnum minutulum</i>	Tiny Cedar Moss				SH	2 May Be At Risk	3	85.7 ± 10.0	NB
P	<i>Juglans cinerea</i>	Butternut	Endangered	Endangered	Endangered	S1	1 At Risk	58	17.8 ± 1.0	NB
P	<i>Polemonium vanbruntiae</i>	Van Brunt's Jacob's-ladder	Threatened	Threatened	Threatened	S1	1 At Risk	72	39.5 ± 0.0	NB

Taxonomic Group	Scientific Name	Common Name	COSEWIC	SARA	Prov Legal Prot	Prov Rarity Rank	Prov GS Rank	# recs	Distance (km)	Prov
P	<i>Symphotrichum anticostense</i>	Anticosti Aster	Threatened	Threatened	Endangered	S2S3	1 At Risk	4	95.6 ± 0.0	NB
P	<i>Isoetes prototypus</i>	Prototype Quillwort	Special Concern	Special Concern	Endangered	S2	1 At Risk	27	25.2 ± 0.0	NB
P	<i>Pterospora andromedea</i>	Woodland Pinedrops			Endangered	S1	1 At Risk	11	92.5 ± 0.0	NB
P	<i>Cryptotaenia canadensis</i>	Canada Honewort				S1	2 May Be At Risk	1	60.9 ± 1.0	NB
P	<i>Sanicula trifoliata</i>	Large-Fruited Sanicle				S1	2 May Be At Risk	1	29.0 ± 5.0	NB
P	<i>Antennaria parlinii</i>	a Pussytoes				S1	2 May Be At Risk	7	49.3 ± 1.0	NB
P	<i>Antennaria howellii</i> ssp. <i>petaloidea</i>	Pussy-Toes				S1	2 May Be At Risk	2	8.2 ± 5.0	NB
P	<i>Bidens discoidea</i>	Swamp Beggarticks				S1	2 May Be At Risk	3	66.5 ± 0.0	NB
P	<i>Pseudognaphalium obtusifolium</i>	Eastern Cudweed				S1	2 May Be At Risk	5	81.8 ± 0.0	NB
P	<i>Helianthus decapetalus</i>	Ten-rayed Sunflower				S1	2 May Be At Risk	13	94.2 ± 0.0	NB
P	<i>Hieracium kalmii</i>	Kalm's Hawkweed				S1	2 May Be At Risk	5	31.8 ± 1.0	NB
P	<i>Hieracium kalmii</i> var. <i>kalmii</i>	Kalm's Hawkweed				S1	2 May Be At Risk	7	32.6 ± 1.0	NB
P	<i>Hieracium paniculatum</i>	Panicled Hawkweed				S1	2 May Be At Risk	8	39.9 ± 0.0	NB
P	<i>Hieracium robinsonii</i>	Robinson's Hawkweed				S1	3 Sensitive	5	77.9 ± 0.0	NB
P	<i>Senecio pseudoarnica</i>	Seabeach Ragwort				S1	2 May Be At Risk	14	92.0 ± 0.0	NB
P	<i>Cardamine parviflora</i> var. <i>arenicola</i>	Small-flowered Bittercress				S1	2 May Be At Risk	16	24.0 ± 0.0	NB
P	<i>Cardamine concatenata</i>	Cut-leaved Toothwort				S1	2 May Be At Risk	1	94.3 ± 1.0	NB
P	<i>Draba arabisans</i>	Rock Whitlow-Grass				S1	2 May Be At Risk	21	8.1 ± 0.0	NB
P	<i>Draba breweri</i> var. <i>cana</i>	Brewer's Whitlow-grass				S1	2 May Be At Risk	10	93.1 ± 0.0	NB
P	<i>Draba glabella</i>	Rock Whitlow-Grass				S1	2 May Be At Risk	12	7.5 ± 1.0	NB
P	<i>Minuartia groenlandica</i>	Greenland Stitchwort				S1	2 May Be At Risk	4	24.7 ± 0.0	NB
P	<i>Chenopodium capitatum</i>	Strawberry-bite				S1	2 May Be At Risk	4	6.1 ± 1.0	NB
P	<i>Chenopodium simplex</i>	Maple-leaved Goosefoot				S1	2 May Be At Risk	13	66.1 ± 1.0	NB
P	<i>Triadenum virginicum</i>	Virginia St John's-wort				S1	2 May Be At Risk	2	13.5 ± 0.0	NB
P	<i>Corema conradii</i>	Broom Crowberry				S1	2 May Be At Risk	5	8.1 ± 10.0	NB
P	<i>Vaccinium boreale</i>	Northern Blueberry				S1	2 May Be At Risk	2	41.4 ± 0.0	NB
P	<i>Vaccinium corymbosum</i>	Highbush Blueberry				S1	3 Sensitive	1	90.5 ± 5.0	NB
P	<i>Chamaesyce polygonifolia</i>	Seaside Spurge				S1	2 May Be At Risk	8	87.9 ± 0.0	NB
P	<i>Lespedeza capitata</i>	Round-headed Bush-clover				S1	2 May Be At Risk	7	65.2 ± 0.0	NB
P	<i>Gentiana rubricaulis</i>	Purple-stemmed Gentian				S1	2 May Be At Risk	6	56.4 ± 0.0	NB
P	<i>Lomatogonium rotatum</i>	Marsh Felwort				S1	2 May Be At Risk	2	69.4 ± 0.0	NB
P	<i>Proserpinaca pectinata</i>	Comb-leaved Mermaidweed				S1	2 May Be At Risk	2	44.0 ± 0.0	NB
P	<i>Pycnanthemum virginianum</i>	Virginia Mountain Mint				S1	2 May Be At Risk	4	30.4 ± 0.0	NB
P	<i>Lysimachia quadrifolia</i>	Whorled Yellow Loosestrife				S1	2 May Be At Risk	16	14.0 ± 1.0	NB
P	<i>Primula laurentiana</i>	Laurentian Primrose				S1	2 May Be At Risk	30	69.5 ± 2.0	NS
P	<i>Ranunculus sceleratus</i>	Cursed Buttercup				S1	2 May Be At Risk	6	12.4 ± 0.0	NB
P	<i>Crataegus jonesiae</i>	Jones' Hawthorn				S1	2 May Be At Risk	5	83.4 ± 0.0	NB
P	<i>Potentilla canadensis</i>	Canada Cinquefoil				S1	5 Undetermined	1	94.9 ± 0.0	NB
P	<i>Galium brevipes</i>	Limestone Swamp Bedstraw				S1	2 May Be At Risk	1	77.4 ± 5.0	NB
P	<i>Saxifraga paniculata</i> ssp. <i>neogaea</i>	White Mountain Saxifrage				S1	2 May Be At Risk	24	8.6 ± 10.0	NB
P	<i>Agalinis paupercula</i> var. <i>borealis</i>	Small-flowered Agalinis				S1	2 May Be At Risk	8	16.5 ± 1.0	NB



Taxonomic Group	Scientific Name	Common Name	COSEWIC	SARA	Prov Legal Prot	Prov Rarity Rank	Prov GS Rank	# recs	Distance (km)	Prov
P	<i>Agalinis tenuifolia</i>	Slender Agalinis				S1	2 May Be At Risk	6	79.8 ± 0.0	NB
P	<i>Gratiola aurea</i>	Golden Hedge-Hyssop				S1	3 Sensitive	3	22.1 ± 0.0	NB
P	<i>Pedicularis canadensis</i>	Canada Lousewort				S1	2 May Be At Risk	3	64.8 ± 0.0	NB
P	<i>Viola sagittata</i> var. <i>ovata</i>	Arrow-Leaved Violet				S1	2 May Be At Risk	38	71.5 ± 0.0	NS
P	<i>Alisma subcordatum</i>	Southern Water Plantain				S1	5 Undetermined	4	23.9 ± 0.0	NB
P	<i>Carex atlantica</i> ssp. <i>atlantica</i>	Atlantic Sedge				S1	2 May Be At Risk	1	64.4 ± 0.0	NB
P	<i>Carex backii</i>	Rocky Mountain Sedge				S1	2 May Be At Risk	8	62.2 ± 0.0	NB
P	<i>Carex merritt-feraldii</i>	Merritt Fernald's Sedge				S1	2 May Be At Risk	3	85.1 ± 0.0	NB
P	<i>Carex saxatilis</i>	Russet Sedge				S1	2 May Be At Risk	13	6.6 ± 10.0	NB
P	<i>Carex sterilis</i>	Sterile Sedge				S1	2 May Be At Risk	2	96.9 ± 2.0	NB
P	<i>Carex grisea</i>	Inflated Narrow-leaved Sedge				S1	2 May Be At Risk	10	34.4 ± 0.0	NB
P	<i>Cyperus diandrus</i>	Low Flatsedge				S1	2 May Be At Risk	7	79.8 ± 1.0	NB
P	<i>Cyperus lupulinus</i>	Hop Flatsedge				S1	2 May Be At Risk	6	62.5 ± 0.0	NB
P	<i>Cyperus lupulinus</i> ssp. <i>macilentus</i>	Hop Flatsedge				S1	2 May Be At Risk	16	60.3 ± 0.0	NB
P	<i>Rhynchospora capillacea</i>	Slender Beakrush				S1	2 May Be At Risk	3	95.1 ± 0.0	NB
P	<i>Scirpus pendulus</i>	Hanging Bulrush				S1	2 May Be At Risk	5	92.8 ± 0.0	NB
P	<i>Sisyrinchium angustifolium</i>	Narrow-leaved Blue-eyed-grass				S1	2 May Be At Risk	8	9.8 ± 1.0	NB
P	<i>Juncus greenii</i>	Greene's Rush				S1	2 May Be At Risk	1	54.2 ± 0.0	NB
P	<i>Juncus subtilis</i>	Creeping Rush				S1	2 May Be At Risk	1	41.4 ± 5.0	NB
P	<i>Allium canadense</i>	Canada Garlic				S1	2 May Be At Risk	11	30.7 ± 0.0	NB
P	<i>Goodyera pubescens</i>	Downy Rattlesnake-Plantain				S1	2 May Be At Risk	11	74.1 ± 0.0	NB
P	<i>Malaxis brachypoda</i>	White Adder's-Mouth				S1	2 May Be At Risk	3	82.3 ± 0.0	NS
P	<i>Platanthera flava</i> var. <i>herbiola</i>	Pale Green Orchid				S1	2 May Be At Risk	14	58.0 ± 0.0	NB
P	<i>Platanthera macrophylla</i>	Large Round-Leaved Orchid				S1	2 May Be At Risk	2	61.3 ± 1.0	NB
P	<i>Spiranthes casei</i>	Case's Ladies'-Tresses				S1	2 May Be At Risk	6	92.6 ± 0.0	NB
P	<i>Bromus pubescens</i>	Hairy Wood Brome Grass				S1	5 Undetermined	6	62.8 ± 0.0	NB
P	<i>Cinna arundinacea</i>	Sweet Wood Reed Grass				S1	2 May Be At Risk	6	38.9 ± 0.0	NB
P	<i>Danthonia compressa</i>	Flattened Oat Grass				S1	2 May Be At Risk	6	62.8 ± 1.0	NB
P	<i>Dichanthelium dichotomum</i>	Forked Panic Grass				S1	2 May Be At Risk	5	20.9 ± 1.0	NB
P	<i>Festuca subverticillata</i>	Nodding Fescue				S1	2 May Be At Risk	2	87.8 ± 1.0	NS
P	<i>Glyceria obtusa</i>	Atlantic Manna Grass				S1	2 May Be At Risk	4	46.5 ± 0.0	NB
P	<i>Sporobolus compositus</i>	Rough Dropseed				S1	2 May Be At Risk	17	94.4 ± 0.0	NB
P	<i>Potamogeton friesii</i>	Fries' Pondweed				S1	2 May Be At Risk	6	12.5 ± 5.0	NB
P	<i>Potamogeton nodosus</i>	Long-leaved Pondweed				S1	2 May Be At Risk	4	71.1 ± 0.0	NB
P	<i>Potamogeton strictifolius</i>	Straight-leaved Pondweed				S1	2 May Be At Risk	2	14.8 ± 0.0	NB
P	<i>Xyris difformis</i>	Bog Yellow-eyed-grass				S1	5 Undetermined	3	13.3 ± 0.0	NB
P	<i>Asplenium ruta-muraria</i> var. <i>cryptolepis</i>	Wallrue Spleenwort				S1	2 May Be At Risk	3	8.1 ± 0.0	NB
P	<i>Cystopteris laurentiana</i>	Laurentian Bladder Fern				S1	2 May Be At Risk	1	61.3 ± 1.0	NB
P	<i>Botrychium oneidense</i>	Blunt-lobed Moonwort				S1	2 May Be At Risk	4	56.4 ± 0.0	NB
P	<i>Botrychium rugulosum</i>	Rugulose Moonwort				S1	2 May Be At Risk	1	86.2 ± 1.0	NB
P	<i>Schizaea pusilla</i>	Little Curlygrass Fern				S1	2 May Be At Risk	26	20.3 ± 0.0	NB
P	<i>Hieracium kalmii</i> var. <i>fasciculatum</i>	Kalm's Hawkweed				S1?	5 Undetermined	6	83.0 ± 0.0	NB
P	<i>Drosera rotundifolia</i> var. <i>comosa</i>	Round-leaved Sundew				S1?	5 Undetermined	5	65.3 ± 1.0	NB
P	<i>Carex laxiflora</i>	Loose-Flowered Sedge				S1?	5 Undetermined	2	73.3 ± 5.0	NS
P	<i>Wolffia columbiana</i>	Columbian Watermeal				S1?	2 May Be At Risk	5	67.3 ± 0.0	NB

Taxonomic Group	Scientific Name	Common Name	COSEWIC	SARA	Prov Legal Prot	Prov Rarity Rank	Prov GS Rank	# recs	Distance (km)	Prov
P	<i>Rumex aquaticus</i> var. <i>fenestratus</i>	Western Dock				S1S2	2 May Be At Risk	1	80.3 ± 1.0	NB
P	<i>Saxifraga virginensis</i>	Early Saxifrage				S1S2	2 May Be At Risk	10	92.5 ± 0.0	NB
P	<i>Potamogeton bicupulatus</i>	Snailseed Pondweed				S1S2	2 May Be At Risk	5	33.6 ± 0.0	NB
P	<i>Selaginella rupestris</i>	Rock Spikemoss				S1S2	2 May Be At Risk	26	61.5 ± 1.0	NB
P	<i>Thelypteris simulata</i>	Bog Fern				S1S2	2 May Be At Risk	7	66.8 ± 0.0	NB
P	<i>Cuscuta cephalanthi</i>	Buttonbush Dodder				S1S3	2 May Be At Risk	2	9.0 ± 0.0	NB
P	<i>Listera australis</i>	Southern Twayblade			Endangered	S2	1 At Risk	15	78.9 ± 0.0	NB
P	<i>Osmorhiza longistylis</i>	Smooth Sweet Cicely				S2	3 Sensitive	1	86.4 ± 0.0	NB
P	<i>Pseudognaphalium macounii</i>	Macoun's Cudweed				S2	3 Sensitive	8	8.3 ± 0.0	NB
P	<i>Solidago simplex</i> var. <i>racemosa</i>	Sticky Goldenrod				S2	2 May Be At Risk	12	93.7 ± 0.0	NB
P	<i>Ionactis linariifolius</i>	Stiff Aster				S2	3 Sensitive	1	90.6 ± 0.0	NB
P	<i>Symphotrichum racemosum</i>	Small White Aster				S2	3 Sensitive	7	58.3 ± 1.0	NB
P	<i>Impatiens pallida</i>	Pale Jewelweed				S2	2 May Be At Risk	4	81.4 ± 0.0	NS
P	<i>Alnus serrulata</i>	Smooth Alder				S2	3 Sensitive	8	43.6 ± 0.0	NB
P	<i>Arabis drummondii</i>	Drummond's Rockcress				S2	3 Sensitive	19	7.7 ± 1.0	NB
P	<i>Sagina nodosa</i>	Knotted Pearlwort				S2	3 Sensitive	15	44.1 ± 1.0	NB
P	<i>Sagina nodosa</i> ssp. <i>borealis</i>	Knotted Pearlwort				S2	3 Sensitive	2	25.8 ± 0.0	NB
P	<i>Stellaria longifolia</i>	Long-leaved Starwort				S2	3 Sensitive	7	7.0 ± 10.0	NB
P	<i>Atriplex franktonii</i>	Frankton's Saltbush				S2	4 Secure	3	38.8 ± 1.0	NB
P	<i>Chenopodium rubrum</i>	Red Pigweed				S2	3 Sensitive	4	7.3 ± 1.0	NB
P	<i>Hypericum dissimulatum</i>	Disguised St John's-wort				S2	3 Sensitive	7	60.1 ± 1.0	NB
P	<i>Triosteum aurantiacum</i>	Orange-fruited Tinker's Weed				S2	3 Sensitive	5	95.3 ± 1.0	NB
P	<i>Viburnum lentago</i>	Nannyberry				S2	4 Secure	12	87.4 ± 0.0	NB
P	<i>Viburnum recognitum</i>	Northern Arrow-Wood				S2	4 Secure	1	65.3 ± 0.0	NB
P	<i>Astragalus eucosmus</i>	Elegant Milk-vetch				S2	2 May Be At Risk	10	17.5 ± 0.0	NB
P	<i>Oxytropis campestris</i> var. <i>johannensis</i>	Field Locoweed				S2	3 Sensitive	18	7.8 ± 50.0	NB
P	<i>Quercus macrocarpa</i>	Bur Oak				S2	2 May Be At Risk	44	7.5 ± 1.0	NB
P	<i>Gentiana linearis</i>	Narrow-Leaved Gentian				S2	3 Sensitive	5	85.7 ± 5.0	NB
P	<i>Myriophyllum humile</i>	Low Water Milfoil				S2	3 Sensitive	5	64.4 ± 1.0	NB
P	<i>Proserpinaca palustris</i> var. <i>crebra</i>	Marsh Mermaidweed				S2	3 Sensitive	10	29.4 ± 0.0	NB
P	<i>Hedeoma pulegioides</i>	American False Pennyroyal				S2	4 Secure	60	8.7 ± 0.0	NB
P	<i>Nuphar lutea</i> ssp. <i>rubrodisca</i>	Red-disked Yellow Pond-lily				S2	3 Sensitive	9	17.3 ± 1.0	NB
P	<i>Orobanche uniflora</i>	One-Flowered Broomrape				S2	3 Sensitive	13	8.2 ± 1.0	NB
P	<i>Polygala paucifolia</i>	Fringed Milkwort				S2	3 Sensitive	15	63.0 ± 0.0	NB
P	<i>Polygonum amphibium</i> var. <i>emersum</i>	Water Smartweed				S2	3 Sensitive	24	29.4 ± 0.0	NB
P	<i>Polygonum careyi</i>	Carey's Smartweed				S2	3 Sensitive	15	20.5 ± 5.0	NB
P	<i>Podostemum ceratophyllum</i>	Horn-leaved Riverweed				S2	3 Sensitive	8	50.7 ± 0.0	NB
P	<i>Anemone multifida</i>	Cut-leaved Anemone				S2	3 Sensitive	1	95.7 ± 0.0	NB
P	<i>Hepatica nobilis</i> var. <i>obtusata</i>	Round-lobed Hepatica				S2	3 Sensitive	35	49.4 ± 1.0	NB
P	<i>Ranunculus flabellaris</i>	Yellow Water Buttercup				S2	4 Secure	14	39.4 ± 0.0	NB
P	<i>Ranunculus longirostris</i>	Eastern White Water-Crowfoot				S2	5 Undetermined	5	77.5 ± 1.0	NB
P	<i>Crataegus scabrada</i>	Rough Hawthorn				S2	3 Sensitive	9	8.1 ± 0.0	NB
P	<i>Crataegus succulenta</i>	Fleshy Hawthorn				S2	3 Sensitive	1	86.2 ± 5.0	NB

Taxonomic Group	Scientific Name	Common Name	COSEWIC	SARA	Prov Legal Prot	Prov Rarity Rank	Prov GS Rank	# recs	Distance (km)	Prov
P	<i>Cephalanthus occidentalis</i>	Common Buttonbush				S2	3 Sensitive	19	56.2 ± 0.0	NB
P	<i>Salix candida</i>	Sage Willow				S2	3 Sensitive	3	92.5 ± 1.0	NS
P	<i>Agalinis neoscotica</i>	Nova Scotia Agalinis				S2	3 Sensitive	27	72.8 ± 1.0	NS
P	<i>Euphrasia randii</i>	Rand's Eyebright				S2	2 May Be At Risk	16	25.3 ± 0.0	NB
P	<i>Scrophularia lanceolata</i>	Lance-leaved Figwort				S2	3 Sensitive	5	16.1 ± 5.0	NB
P	<i>Dirca palustris</i>	Eastern Leatherwood				S2	2 May Be At Risk	4	92.6 ± 0.0	NB
P	<i>Phryma leptostachya</i>	American Lopseed				S2	3 Sensitive	1	97.7 ± 1.0	NB
P	<i>Verbena urticifolia</i>	White Vervain				S2	2 May Be At Risk	10	92.7 ± 1.0	NB
P	<i>Viola novae-angliae</i>	New England Violet				S2	3 Sensitive	4	24.2 ± 0.0	NB
P	<i>Symplocarpus foetidus</i>	Eastern Skunk Cabbage				S2	3 Sensitive	66	8.8 ± 1.0	NB
P	<i>Carex comosa</i>	Bearded Sedge				S2	2 May Be At Risk	2	97.0 ± 1.0	NS
P	<i>Carex granularis</i>	Limestone Meadow Sedge				S2	3 Sensitive	6	60.9 ± 5.0	NB
P	<i>Carex gynocrates</i>	Northern Bog Sedge				S2	3 Sensitive	5	62.8 ± 1.0	NB
P	<i>Carex hirtifolia</i>	Pubescent Sedge				S2	3 Sensitive	4	37.4 ± 0.0	NB
P	<i>Carex livida</i> var. <i>radicalis</i>	Livid Sedge				S2	3 Sensitive	1	8.3 ± 2.0	NB
P	<i>Carex plantaginea</i>	Plantain-Leaved Sedge				S2	3 Sensitive	2	81.8 ± 0.0	NB
P	<i>Carex prairea</i>	Prairie Sedge				S2	3 Sensitive	1	86.0 ± 5.0	NS
P	<i>Carex rostrata</i>	Narrow-leaved Beaked Sedge				S2	3 Sensitive	2	79.5 ± 0.0	NB
P	<i>Carex salina</i>	Saltmarsh Sedge				S2	3 Sensitive	2	9.3 ± 1.0	NB
P	<i>Carex sprengeii</i>	Longbeak Sedge				S2	3 Sensitive	3	56.7 ± 0.0	NB
P	<i>Carex tenuiflora</i>	Sparse-Flowered Sedge				S2	2 May Be At Risk	6	80.4 ± 0.0	NB
P	<i>Carex albicans</i> var. <i>emmonsii</i>	White-tinged Sedge				S2	3 Sensitive	5	12.5 ± 0.0	NB
P	<i>Cyperus squarrosus</i>	Awned Flatsedge				S2	3 Sensitive	31	25.9 ± 0.0	NB
P	<i>Eriophorum gracile</i>	Slender Cottongrass				S2	2 May Be At Risk	5	64.6 ± 0.0	NB
P	<i>Blysmus rufus</i>	Red Bulrush				S2	3 Sensitive	3	87.0 ± 0.0	NB
P	<i>Elodea nuttallii</i>	Nuttall's Waterweed				S2	3 Sensitive	6	23.7 ± 0.0	NB
P	<i>Juncus vaseyi</i>	Vasey Rush				S2	3 Sensitive	4	89.6 ± 0.0	NB
P	<i>Allium tricoccum</i>	Wild Leek				S2	2 May Be At Risk	13	18.2 ± 0.0	NB
P	<i>Najas gracillima</i>	Thread-Like Naiad				S2	3 Sensitive	11	47.3 ± 0.0	NB
P	<i>Calypso bulbosa</i> var. <i>americana</i>	Calypso				S2	2 May Be At Risk	5	1.4 ± 0.0	NB
P	<i>Coeloglossum viride</i> var. <i>virescens</i>	Long-bracted Frog Orchid				S2	2 May Be At Risk	7	29.4 ± 5.0	NB
P	<i>Cypripedium parviflorum</i> var. <i>makasin</i>	Small Yellow Lady's-Slipper				S2	2 May Be At Risk	5	8.3 ± 2.0	NB
P	<i>Spiranthes lucida</i>	Shining Ladies'-Tresses				S2	3 Sensitive	14	17.3 ± 0.0	NB
P	<i>Spiranthes ochroleuca</i>	Yellow Ladies'-tresses				S2	2 May Be At Risk	12	86.4 ± 5.0	NB
P	<i>Dichanthelium linearifolium</i>	Narrow-leaved Panic Grass				S2	3 Sensitive	15	50.8 ± 0.0	NB
P	<i>Elymus canadensis</i>	Canada Wild Rye				S2	2 May Be At Risk	14	70.0 ± 1.0	NB
P	<i>Leersia virginica</i>	White Cut Grass				S2	2 May Be At Risk	42	39.1 ± 0.0	NB
P	<i>Piptatherum canadense</i>	Canada Rice Grass				S2	3 Sensitive	6	50.8 ± 0.0	NB
P	<i>Poa glauca</i>	Glaucous Blue Grass				S2	4 Secure	14	8.3 ± 2.0	NB
P	<i>Puccinellia phryganodes</i>	Creeping Alkali Grass				S2	3 Sensitive	15	39.3 ± 0.0	NB
P	<i>Schizachyrium scoparium</i>	Little Bluestem				S2	3 Sensitive	41	23.7 ± 0.0	NB
P	<i>Zizania aquatica</i> var. <i>aquatica</i>	Indian Wild Rice				S2	5 Undetermined	5	38.7 ± 0.0	NB
P	<i>Piptatherum pungens</i>	Slender Rice Grass				S2	2 May Be At Risk	4	90.1 ± 1.0	NB
P	<i>Potamogeton vaseyi</i>	Vasey's Pondweed				S2	3 Sensitive	4	12.5 ± 1.0	NB

Taxonomic Group	Scientific Name	Common Name	COSEWIC	SARA	Prov Legal Prot	Prov Rarity Rank	Prov GS Rank	# recs	Distance (km)	Prov
P	<i>Asplenium trichomanes</i>	Maidenhair Spleenwort				S2	3 Sensitive	16	8.1 ± 0.0	NB
P	<i>Woodwardia virginica</i>	Virginia Chain Fern				S2	3 Sensitive	13	82.1 ± 1.0	NB
P	<i>Woodsia alpina</i>	Alpine Cliff Fern				S2	3 Sensitive	7	8.6 ± 0.0	NB
P	<i>Selaginella selaginoides</i>	Low Spikemoss				S2	3 Sensitive	11	8.3 ± 6.0	NB
P	<i>Toxicodendron radicans</i>	Poison Ivy				S2?	3 Sensitive	14	23.8 ± 0.0	NB
P	<i>Symphyotrichum novi-belgii</i> var. <i>crenifolium</i>	New York Aster				S2?	5 Undetermined	9	6.1 ± 0.0	NB
P	<i>Humulus lupulus</i> var. <i>lupuloides</i>	Common Hop				S2?	3 Sensitive	4	81.7 ± 0.0	NB
P	<i>Rubus recurvicaulis</i>	Arching Dewberry				S2?	4 Secure	5	5.8 ± 5.0	NB
P	<i>Galium obtusum</i>	Blunt-leaved Bedstraw				S2?	4 Secure	5	38.9 ± 1.0	NB
P	<i>Salix myricoides</i>	Bayberry Willow				S2?	3 Sensitive	7	81.8 ± 0.0	NB
P	<i>Carex vacillans</i>	Estuarine Sedge				S2?	3 Sensitive	4	76.5 ± 1.0	NB
P	<i>Platanthera huronensis</i>	Fragrant Green Orchid				S2?	5 Undetermined	3	93.0 ± 10.0	NS
P	<i>Solidago altissima</i>	Tall Goldenrod				S2S3	4 Secure	5	16.8 ± 1.0	NB
P	<i>Barbarea orthoceras</i>	American Yellow Rocket				S2S3	3 Sensitive	6	16.9 ± 0.0	NB
P	<i>Ceratophyllum echinatum</i>	Prickly Hornwort				S2S3	3 Sensitive	15	17.5 ± 0.0	NB
P	<i>Callitriche hermaphroditica</i>	Northern Water-starwort				S2S3	4 Secure	10	23.3 ± 1.0	NB
P	<i>Lonicera oblongifolia</i>	Swamp Fly Honeysuckle				S2S3	3 Sensitive	5	23.6 ± 6.0	NB
P	<i>Elatine americana</i>	American Waterwort				S2S3	3 Sensitive	7	15.5 ± 1.0	NB
P	<i>Bartonia paniculata</i>	Branched Bartonia				S2S3	3 Sensitive	4	26.8 ± 0.0	NB
P	<i>Bartonia paniculata</i> ssp. <i>iodandra</i>	Branched Bartonia				S2S3	3 Sensitive	36	20.4 ± 0.0	NB
P	<i>Geranium robertianum</i>	Herb Robert				S2S3	4 Secure	28	4.3 ± 1.0	NB
P	<i>Myriophyllum quitense</i>	Andean Water Milfoil				S2S3	4 Secure	71	2.3 ± 0.0	NB
P	<i>Epilobium coloratum</i>	Purple-veined Willowherb				S2S3	3 Sensitive	8	6.2 ± 1.0	NB
P	<i>Rumex pallidus</i>	Seabeach Dock				S2S3	3 Sensitive	6	7.4 ± 0.0	NB
P	<i>Rubus pensilvanicus</i>	Pennsylvania Blackberry				S2S3	4 Secure	19	8.4 ± 0.0	NB
P	<i>Galium labradoricum</i>	Labrador Bedstraw				S2S3	3 Sensitive	4	65.0 ± 1.0	NB
P	<i>Valeriana uliginosa</i>	Swamp Valerian				S2S3	3 Sensitive	1	98.6 ± 1.0	NB
P	<i>Carex adusta</i>	Lesser Brown Sedge				S2S3	4 Secure	7	8.8 ± 1.0	NB
P	<i>Corallorhiza maculata</i> var. <i>occidentalis</i>	Spotted Coralroot				S2S3	3 Sensitive	4	77.1 ± 1.0	NB
P	<i>Corallorhiza maculata</i> var. <i>maculata</i>	Spotted Coralroot				S2S3	3 Sensitive	2	83.5 ± 1.0	NB
P	<i>Listera auriculata</i>	Auricled Twayblade				S2S3	3 Sensitive	9	11.9 ± 1.0	NB
P	<i>Spiranthes cernua</i>	Nodding Ladies'-Tresses				S2S3	3 Sensitive	21	54.2 ± 0.0	NB
P	<i>Eragrostis pectinacea</i>	Tufted Love Grass				S2S3	4 Secure	14	37.6 ± 1.0	NB
P	<i>Stuckenia filiformis</i> ssp. <i>alpina</i>	Thread-leaved Pondweed				S2S3	3 Sensitive	7	2.5 ± 0.0	NB
P	<i>Stuckenia pectinata</i>	Sago Pondweed				S2S3	3 Sensitive	67	1.7 ± 0.0	NB
P	<i>Potamogeton praelongus</i>	White-stemmed Pondweed				S2S3	4 Secure	12	2.4 ± 0.0	NB
P	<i>Isoetes acadensis</i>	Acadian Quillwort				S2S3	3 Sensitive	9	50.2 ± 0.0	NB
P	<i>Ophioglossum pusillum</i>	Northern Adder's-tongue				S2S3	3 Sensitive	9	8.5 ± 1.0	NB
P	<i>Panax trifolius</i>	Dwarf Ginseng				S3	3 Sensitive	17	20.3 ± 0.0	NB
P	<i>Artemisia campestris</i>	Field Wormwood				S3	4 Secure	25	62.8 ± 0.0	NB
P	<i>Artemisia campestris</i> ssp. <i>caudata</i>	Field Wormwood				S3	4 Secure	77	56.5 ± 0.0	NB
P	<i>Erigeron hyssopifolius</i>	Hyssop-leaved Fleabane				S3	4 Secure	28	1.4 ± 0.0	NB
P	<i>Prenanthes racemosa</i>	Glaucous Rattlesnakeroot				S3	4 Secure	67	6.1 ± 1.0	NB
P	<i>Tanacetum bipinnatum</i> ssp. <i>huronense</i>	Lake Huron Tansy				S3	4 Secure	19	3.4 ± 1.0	NB

Taxonomic Group	Scientific Name	Common Name	COSEWIC	SARA	Prov Legal Prot	Prov Rarity Rank	Prov GS Rank	# recs	Distance (km)	Prov
P	<i>Symphotrichum boreale</i>	Boreal Aster				S3	3 Sensitive	8	17.2 ± 0.0	NB
P	<i>Betula pumila</i>	Bog Birch				S3	4 Secure	20	62.0 ± 1.0	NB
P	<i>Arabis glabra</i>	Tower Mustard				S3	5 Undetermined	1	69.1 ± 0.0	NB
P	<i>Arabis hirsuta</i> var. <i>pycnocarpa</i>	Western Hairy Rockcress				S3	4 Secure	22	7.7 ± 0.0	NB
P	<i>Cardamine maxima</i>	Large Toothwort				S3	4 Secure	28	2.4 ± 0.0	NB
P	<i>Subularia aquatica</i> var. <i>americana</i>	Water Awlwort				S3	4 Secure	14	36.8 ± 0.0	NB
P	<i>Lobelia cardinalis</i>	Cardinal Flower				S3	4 Secure	279	58.3 ± 0.0	NB
P	<i>Stellaria humifusa</i>	Saltmarsh Starwort				S3	4 Secure	12	13.1 ± 0.0	NB
P	<i>Hudsonia tomentosa</i>	Woolly Beach-heath				S3	4 Secure	3	28.6 ± 0.0	NB
P	<i>Cornus amomum</i> ssp. <i>obliqua</i>	Pale Dogwood				S3	3 Sensitive	64	23.0 ± 0.0	NB
P	<i>Crassula aquatica</i>	Water Pygmyweed				S3	4 Secure	10	40.5 ± 0.0	NB
P	<i>Rhodiola rosea</i>	Roseroot				S3	4 Secure	48	2.9 ± 5.0	NB
P	<i>Penthorum sedoides</i>	Ditch Stonecrop				S3	4 Secure	47	26.7 ± 0.0	NB
P	<i>Elatine minima</i>	Small Waterwort				S3	4 Secure	28	16.1 ± 0.0	NB
P	<i>Astragalus alpinus</i> var. <i>brunetianus</i>	Alpine Milk-Vetch				S3	4 Secure	3	93.8 ± 0.0	NB
P	<i>Hedysarum alpinum</i>	Alpine Sweet-vetch				S3	4 Secure	2	17.6 ± 0.0	NB
P	<i>Gentianella amarella</i> ssp. <i>acuta</i>	Northern Gentian				S3	4 Secure	3	7.4 ± 0.0	NB
P	<i>Geranium bicknellii</i>	Bicknell's Crane's-bill				S3	4 Secure	8	13.0 ± 5.0	NB
P	<i>Myriophyllum farwellii</i>	Farwell's Water Milfoil				S3	4 Secure	16	6.7 ± 0.0	NB
P	<i>Myriophyllum heterophyllum</i>	Variable-leaved Water Milfoil				S3	4 Secure	49	18.4 ± 0.0	NB
P	<i>Myriophyllum verticillatum</i>	Whorled Water Milfoil				S3	4 Secure	19	7.5 ± 1.0	NB
P	<i>Stachys tenuifolia</i>	Smooth Hedge-Nettle				S3	3 Sensitive	12	20.5 ± 0.0	NB
P	<i>Teucrium canadense</i>	Canada Germander				S3	3 Sensitive	5	75.5 ± 1.0	NS
P	<i>Utricularia radiata</i>	Little Floating Bladderwort				S3	4 Secure	36	13.9 ± 0.0	NB
P	<i>Nuphar lutea</i> ssp. <i>pumila</i>	Small Yellow Pond-lily				S3	4 Secure	15	8.3 ± 0.0	NB
P	<i>Epilobium hornemannii</i>	Hornemann's Willowherb				S3	4 Secure	5	37.5 ± 0.0	NB
P	<i>Epilobium hornemannii</i> ssp. <i>hornemannii</i>	Hornemann's Willowherb				S3	4 Secure	1	80.2 ± 0.0	NB
P	<i>Epilobium strictum</i>	Downy Willowherb				S3	4 Secure	20	4.3 ± 5.0	NB
P	<i>Polygala sanguinea</i>	Blood Milkwort				S3	3 Sensitive	15	50.2 ± 0.0	NB
P	<i>Polygonum arifolium</i>	Halberd-leaved Tearthumb				S3	4 Secure	14	39.5 ± 0.0	NB
P	<i>Polygonum punctatum</i>	Dotted Smartweed				S3	4 Secure	1	66.7 ± 0.0	NB
P	<i>Polygonum punctatum</i> var. <i>confertiflorum</i>	Dotted Smartweed				S3	4 Secure	10	66.2 ± 2.0	NB
P	<i>Polygonum scandens</i>	Climbing False Buckwheat				S3	4 Secure	33	27.5 ± 0.0	NB
P	<i>Littorella uniflora</i>	American Shoreweed				S3	4 Secure	20	16.1 ± 0.0	NB
P	<i>Primula mistassinica</i>	Mistassini Primrose				S3	4 Secure	12	1.2 ± 5.0	NB
P	<i>Pyrola minor</i>	Lesser Pyrola				S3	4 Secure	5	40.4 ± 0.0	NB
P	<i>Clematis occidentalis</i>	Purple Clematis				S3	4 Secure	23	2.7 ± 0.0	NB
P	<i>Ranunculus gmelinii</i>	Gmelin's Water Buttercup				S3	4 Secure	6	38.7 ± 0.0	NB
P	<i>Thalictrum venulosum</i>	Northern Meadow-rue				S3	4 Secure	79	4.2 ± 5.0	NB
P	<i>Amelanchier canadensis</i>	Canada Serviceberry				S3	4 Secure	16	7.5 ± 1.0	NB
P	<i>Rosa palustris</i>	Swamp Rose				S3	4 Secure	25	5.8 ± 5.0	NB
P	<i>Rubus occidentalis</i>	Black Raspberry				S3	4 Secure	18	40.5 ± 0.0	NB
P	<i>Sanguisorba canadensis</i>	Canada Burnet				S3	4 Secure	15	86.4 ± 0.0	NB
P	<i>Galium boreale</i>	Northern Bedstraw				S3	4 Secure	8	17.8 ± 1.0	NB



Taxonomic Group	Scientific Name	Common Name	COSEWIC	SARA	Prov Legal Prot	Prov Rarity Rank	Prov GS Rank	# recs	Distance (km)	Prov
P	<i>Salix interior</i>	Sandbar Willow				S3	4 Secure	27	56.7 ± 0.0	NB
P	<i>Salix nigra</i>	Black Willow				S3	3 Sensitive	124	7.9 ± 1.0	NB
P	<i>Salix pedicellaris</i>	Bog Willow				S3	4 Secure	44	19.7 ± 1.0	NB
P	<i>Comandra umbellata</i>	Bastard's Toadflax				S3	4 Secure	1	68.9 ± 10.0	NB
P	<i>Parnassia glauca</i>	Fen Grass-of-Parnassus				S3	4 Secure	1	93.6 ± 10.0	NB
P	<i>Limosella australis</i>	Southern Mudwort				S3	4 Secure	10	90.8 ± 0.0	NB
P	<i>Veronica serpyllifolia</i> <i>ssp. humifusa</i>	Thyme-Leaved Speedwell				S3	4 Secure	10	80.9 ± 1.0	NB
P	<i>Boehmeria cylindrica</i>	Small-spike False-nettle				S3	3 Sensitive	46	60.1 ± 0.0	NB
P	<i>Pilea pumila</i>	Dwarf Clearweed				S3	4 Secure	25	38.9 ± 0.0	NB
P	<i>Viola adunca</i>	Hooked Violet				S3	4 Secure	10	56.9 ± 1.0	NB
P	<i>Viola nephrophylla</i>	Northern Bog Violet				S3	4 Secure	8	8.9 ± 0.0	NB
P	<i>Carex aquatilis</i>	Water Sedge				S3	4 Secure	20	8.9 ± 1.0	NB
P	<i>Carex arcta</i>	Northern Clustered Sedge				S3	4 Secure	48	38.2 ± 0.0	NB
P	<i>Carex atratiformis</i>	Scabrous Black Sedge				S3	4 Secure	1	8.3 ± 0.0	NB
P	<i>Carex capillaris</i>	Hairlike Sedge				S3	4 Secure	16	1.1 ± 0.0	NB
P	<i>Carex chordorrhiza</i>	Creeping Sedge				S3	4 Secure	18	45.7 ± 1.0	NB
P	<i>Carex conoidea</i>	Field Sedge				S3	4 Secure	28	12.1 ± 1.0	NB
P	<i>Carex eburnea</i>	Bristle-leaved Sedge				S3	4 Secure	1	80.6 ± 0.0	NB
P	<i>Carex exilis</i>	Coastal Sedge				S3	4 Secure	86	4.6 ± 0.0	NB
P	<i>Carex garberi</i>	Garber's Sedge				S3	3 Sensitive	2	17.0 ± 0.0	NB
P	<i>Carex haydenii</i>	Hayden's Sedge				S3	4 Secure	35	13.7 ± 1.0	NB
P	<i>Carex lupulina</i>	Hop Sedge				S3	4 Secure	75	22.7 ± 0.0	NB
P	<i>Carex michauxiana</i>	Michaux's Sedge				S3	4 Secure	62	1.4 ± 0.0	NB
P	<i>Carex ormostachya</i>	Necklace Spike Sedge				S3	4 Secure	8	55.2 ± 1.0	NB
P	<i>Carex rosea</i>	Rosy Sedge				S3	4 Secure	23	16.9 ± 0.0	NB
P	<i>Carex tenera</i>	Tender Sedge				S3	4 Secure	42	23.4 ± 0.0	NB
P	<i>Carex tuckermanii</i>	Tuckerman's Sedge				S3	4 Secure	64	22.7 ± 0.0	NB
P	<i>Carex vaginata</i>	Sheathed Sedge				S3	3 Sensitive	6	90.5 ± 0.0	NB
P	<i>Carex wiegandii</i>	Wiegand's Sedge				S3	4 Secure	39	12.3 ± 0.0	NB
P	<i>Carex recta</i>	Estuary Sedge				S3	4 Secure	9	22.4 ± 0.0	NB
P	<i>Cyperus dentatus</i>	Toothed Flatsedge				S3	4 Secure	145	5.5 ± 5.0	NB
P	<i>Cyperus esculentus</i>	Perennial Yellow Nutsedge				S3	4 Secure	39	34.3 ± 0.0	NB
P	<i>Eleocharis intermedia</i>	Matted Spikerush				S3	4 Secure	2	74.8 ± 0.0	NB
P	<i>Eleocharis quinqueflora</i>	Few-flowered Spikerush				S3	4 Secure	5	4.6 ± 0.0	NB
P	<i>Rhynchospora capitellata</i>	Small-headed Beakrush				S3	4 Secure	8	50.8 ± 0.0	NB
P	<i>Rhynchospora fusca</i>	Brown Beakrush				S3	4 Secure	31	11.5 ± 0.0	NB
P	<i>Trichophorum clintonii</i>	Clinton's Clubrush				S3	4 Secure	24	1.2 ± 0.0	NB
P	<i>Schoenoplectus fluviatilis</i>	River Bulrush				S3	3 Sensitive	46	16.5 ± 0.0	NB
P	<i>Schoenoplectus torreyi</i>	Torrey's Bulrush				S3	4 Secure	30	6.3 ± 0.0	NB
P	<i>Lemna trisulca</i>	Star Duckweed				S3	4 Secure	18	7.6 ± 1.0	NB
P	<i>Triantha glutinosa</i>	Sticky False-Asphodel				S3	4 Secure	9	17.1 ± 0.0	NB
P	<i>Cypripedium reginae</i>	Showy Lady's-Slipper				S3	3 Sensitive	13	1.5 ± 10.0	NB
P	<i>Liparis loeselii</i>	Loesel's Twayblade				S3	4 Secure	16	2.4 ± 0.0	NB
P	<i>Platanthera blephariglottis</i>	White Fringed Orchid				S3	4 Secure	17	77.4 ± 0.0	NB
P	<i>Platanthera grandiflora</i>	Large Purple Fringed Orchid				S3	3 Sensitive	27	12.7 ± 1.0	NB
P	<i>Bromus latiglumis</i>	Broad-Glumed Brome				S3	3 Sensitive	3	51.5 ± 0.0	NB
P	<i>Calamagrostis pickeringii</i>	Pickering's Reed Grass				S3	4 Secure	105	15.3 ± 0.0	NB
P	<i>Dichanthelium depauperatum</i>	Starved Panic Grass				S3	4 Secure	24	50.8 ± 0.0	NB
P	<i>Muhlenbergia richardsonis</i>	Mat Muhly				S3	4 Secure	9	94.2 ± 0.0	NB

Taxonomic Group	Scientific Name	Common Name	COSEWIC	SARA	Prov Legal Prot	Prov Rarity Rank	Prov GS Rank	# recs	Distance (km)	Prov
P	<i>Heteranthera dubia</i>	Water Stargrass				S3	4 Secure	57	7.1 ± 0.0	NB
P	<i>Potamogeton obtusifolius</i>	Blunt-leaved Pondweed				S3	4 Secure	11	21.8 ± 0.0	NB
P	<i>Potamogeton richardsonii</i>	Richardson's Pondweed				S3	3 Sensitive	16	8.3 ± 1.0	NB
P	<i>Xyris montana</i>	Northern Yellow-Eyed-Grass				S3	4 Secure	25	4.5 ± 0.0	NB
P	<i>Zannichellia palustris</i>	Horned Pondweed				S3	4 Secure	5	7.5 ± 1.0	NB
P	<i>Adiantum pedatum</i>	Northern Maidenhair Fern				S3	4 Secure	5	14.2 ± 1.0	NB
P	<i>Cryptogramma stelleri</i>	Steller's Rockbrake				S3	4 Secure	2	14.7 ± 1.0	NB
P	<i>Asplenium trichomanes-ramosum</i>	Green Spleenwort				S3	4 Secure	18	1.1 ± 5.0	NB
P	<i>Dryopteris fragrans</i> var. <i>remotiuscula</i>	Fragrant Wood Fern				S3	4 Secure	29	8.1 ± 0.0	NB
P	<i>Dryopteris goldiana</i>	Goldie's Woodfern				S3	3 Sensitive	4	97.3 ± 5.0	NB
P	<i>Woodsia glabella</i>	Smooth Cliff Fern				S3	4 Secure	23	26.2 ± 1.0	NB
P	<i>Equisetum palustre</i>	Marsh Horsetail				S3	4 Secure	6	74.3 ± 10.0	NB
P	<i>Isoetes tuckermanii</i>	Tuckerman's Quillwort				S3	4 Secure	29	33.7 ± 0.0	NB
P	<i>Lycopodium sabinifolium</i>	Ground-Fir				S3	4 Secure	12	13.2 ± 1.0	NB
P	<i>Huperzia appalachiana</i>	Appalachian Fir-Clubmoss				S3	3 Sensitive	16	4.3 ± 1.0	NB
P	<i>Botrychium dissectum</i>	Cut-leaved Moonwort				S3	4 Secure	27	10.6 ± 0.0	NB
P	<i>Botrychium lanceolatum</i> var. <i>angustisegmentum</i>	Lance-Leaf Grape-Fern				S3	3 Sensitive	7	8.4 ± 0.0	NB
P	<i>Botrychium simplex</i>	Least Moonwort				S3	4 Secure	8	83.6 ± 0.0	NB
P	<i>Polypodium appalachianum</i>	Appalachian Polypody				S3	4 Secure	15	5.2 ± 1.0	NB
P	<i>Utricularia resupinata</i>	Inverted Bladderwort				S3?	4 Secure	19	13.8 ± 0.0	NB
P	<i>Crataegus submollis</i>	Quebec Hawthorn				S3?	3 Sensitive	16	11.1 ± 1.0	NB
P	<i>Mertensia maritima</i>	Sea Lungwort				S3S4	4 Secure	28	6.9 ± 0.0	NB
P	<i>Lobelia kalmii</i>	Brook Lobelia				S3S4	4 Secure	18	2.4 ± 1.0	NB
P	<i>Suaeda calceoliformis</i>	Horned Sea-blite				S3S4	4 Secure	6	16.8 ± 1.0	NB
P	<i>Myriophyllum sibiricum</i>	Siberian Water Milfoil				S3S4	4 Secure	28	6.3 ± 0.0	NB
P	<i>Stachys pilosa</i>	Hairy Hedge-Nettle				S3S4	5 Undetermined	5	47.5 ± 1.0	NB
P	<i>Utricularia gibba</i>	Humped Bladderwort				S3S4	4 Secure	32	11.5 ± 0.0	NB
P	<i>Rumex maritimus</i>	Sea-Side Dock				S3S4	4 Secure	1	83.3 ± 1.0	NB
P	<i>Potentilla arguta</i>	Tall Cinquefoil				S3S4	4 Secure	27	16.9 ± 0.0	NB
P	<i>Rubus chamaemorus</i>	Cloudberry				S3S4	4 Secure	56	7.5 ± 1.0	NB
P	<i>Geocaulon lividum</i>	Northern Comandra				S3S4	4 Secure	11	12.3 ± 0.0	NB
P	<i>Juniperus horizontalis</i>	Creeping Juniper				S3S4	4 Secure	19	13.8 ± 1.0	NB
P	<i>Cladium mariscoides</i>	Smooth Twigrush				S3S4	4 Secure	30	4.3 ± 0.0	NB
P	<i>Eriophorum russeolum</i>	Russet Cottongrass				S3S4	4 Secure	10	17.0 ± 1.0	NB
P	<i>Triglochin gaspensis</i>	Gasp Arrowgrass				S3S4	4 Secure	18	12.5 ± 1.0	NB
P	<i>Spirodela polyrrhiza</i>	Great Duckweed				S3S4	4 Secure	32	27.3 ± 0.0	NB
P	<i>Corallorhiza maculata</i>	Spotted Coralroot				S3S4	3 Sensitive	15	6.1 ± 1.0	NB
P	<i>Calamagrostis stricta</i>	Slim-stemmed Reed Grass				S3S4	4 Secure	4	12.9 ± 2.0	NB
P	<i>Distichlis spicata</i>	Salt Grass				S3S4	4 Secure	3	66.2 ± 0.0	NB
P	<i>Potamogeton oakesianus</i>	Oakes' Pondweed				S3S4	4 Secure	41	14.2 ± 5.0	NB
P	<i>Montia fontana</i>	Water Blinks				SH	2 May Be At Risk	3	66.5 ± 1.0	NB
P	<i>Solidago caesia</i>	Blue-stemmed Goldenrod				SX	0.1 Extirpated	2	6.1 ± 1.0	NB
P	<i>Celastrus scandens</i>	Climbing Bittersweet				SX	0.1 Extirpated	2	93.2 ± 100.0	NB
P	<i>Carex swanii</i>	Swan's Sedge				SX	0.1 Extirpated	52	75.7 ± 5.0	NS

## 5.1 SOURCE BIBLIOGRAPHY (100 km)

The recipient of these data shall acknowledge the ACCDC and the data sources listed below in any documents, reports, publications or presentations, in which this dataset makes a significant contribution.

# recs	CITATION
13147	eBird. 2014. eBird Basic Dataset. Version: EBD_relNov-2014. Ithaca, New York. Nov 2014. Cornell Lab of Ornithology, 25036 recs.
5967	Lepage, D. 2014. Maritime Breeding Bird Atlas Database. Bird Studies Canada, Sackville NB, 407,838 recs.
5338	Morrison, Guy. 2011. Maritime Shorebird Survey (MSS) database. Canadian Wildlife Service, Ottawa, 15939 surveys. 86171 recs.
3445	Erskine, A.J. 1992. Maritime Breeding Bird Atlas Database. NS Museum & Nimbus Publ., Halifax, 82,125 recs.
1759	Pardieck, K.L. & Ziolkowski Jr., D.J.; Hudson, M.-A.R. 2014. North American Breeding Bird Survey Dataset 1966 - 2013, version 2013.0. U.S. Geological Survey, Patuxent Wildlife Research Center < <a href="http://www.pwrc.usgs.gov/BBS/RawData/">www.pwrc.usgs.gov/BBS/RawData/</a> >.
666	Hicks, Andrew. 2009. Coastal Waterfowl Surveys Database, 2000-08. Canadian Wildlife Service, Sackville, 46488 recs (11149 non-zero).
638	Benedict, B. Connell Herbarium Specimens. University New Brunswick, Fredericton. 2003.
468	Clayden, S.R. 1998. NBM Science Collections databases: vascular plants. New Brunswick Museum, Saint John NB, 19759 recs.
442	Blaney, C.S.; Mazerolle, D.M. 2009. Fieldwork 2009. Atlantic Canada Conservation Data Centre. Sackville NB, 13395 recs.
431	Benedict, B. Connell Herbarium Specimens (Data) . University New Brunswick, Fredericton. 2003.
425	Sollows, M.C., 2008. NBM Science Collections databases: mammals. New Brunswick Museum, Saint John NB, download Jan. 2008, 4983 recs.
421	Blaney, C.S.; Mazerolle, D.M. 2008. Fieldwork 2008. Atlantic Canada Conservation Data Centre. Sackville NB, 13343 recs.
402	Brunelle, P.-M. (compiler). 2009. ADIP/MDDS Odonata Database: data to 2006 inclusive. Atlantic Dragonfly Inventory Program (ADIP), 24200 recs.
375	Blaney, C.S. & Mazerolle, D.M. 2011. NB WTF Fieldwork on Magaguadavic & Lower St Croix Rivers. Atlantic Canada Conservation Data Centre, 4585 recs.
372	Tims, J. & Craig, N. 1995. Environmentally Significant Areas in New Brunswick (NBESA). NB Dept of Environment & Nature Trust of New Brunswick Inc, 6042 recs.
281	Belland, R.J. Maritimes moss records from various herbarium databases. 2014.
229	Clayden, S.R. 2007. NBM Science Collections databases: vascular plants. New Brunswick Museum, Saint John NB, download Mar. 2007, 6914 recs.
225	Blaney, C.S.; Mazerolle, D.M.; Klymko, J; Spicer, C.D. 2006. Fieldwork 2006. Atlantic Canada Conservation Data Centre. Sackville NB, 8399 recs.
222	Goltz, J.P. 2012. Field Notes, 1989-2005. , 1091 recs.
219	Hinds, H.R. 1986. Notes on New Brunswick plant collections. Connell Memorial Herbarium, unpubl, 739 recs.
184	Blaney, C.S. & Mazerolle, D.M. 2011. Field data from NCC properties at Musquash Harbour NB & Goose Lake NS. Atlantic Canada Conservation Data Centre, 1739 recs.
180	Bagnell, B.A. 2001. New Brunswick Bryophyte Occurrences. B&B Botanical, Sussex, 478 recs.
157	Parks Canada. 2010. Specimens in or near National Parks in Atlantic Canada. Canadian National Museum, 3925 recs.
144	Blaney, C.S.; Mazerolle, D.M. 2012. Fieldwork 2012. Atlantic Canada Conservation Data Centre, 13,278 recs.
141	Sollows, M.C., 2009. NBM Science Collections databases: molluscs. New Brunswick Museum, Saint John NB, download Jan. 2009, 6951 recs (2957 in Atlantic Canada).
134	Blaney, C.S.; Spicer, C.D.; Popma, T.M.; Hanel, C. 2002. Fieldwork 2002. Atlantic Canada Conservation Data Centre. Sackville NB, 2252 recs.
130	Benedict, B. Connell Herbarium Specimen Database Download 2004. Connell Memorial Herbarium, University of New Brunswick. 2004.
129	Bateman, M.C. 2001. Coastal Waterfowl Surveys Database, 1965-2001. Canadian Wildlife Service, Sackville, 667 recs.
124	Blaney, C.S. 2000. Fieldwork 2000. Atlantic Canada Conservation Data Centre. Sackville NB, 1265 recs.
118	Stewart, J.I. 2010. Peregrine Falcon Surveys in New Brunswick, 2002-09. Canadian Wildlife Service, Sackville, 58 recs.
113	Bishop, G. & Papoulias, M.; Arnold (Chaplin), M. 2005. Grand Lake Meadows field notes, Summer 2005. New Brunswick Federation of Naturalists, 1638 recs.
113	Boyne, A.W. 2000. Tern Surveys. Canadian Wildlife Service, Sackville, unpublished data. 168 recs.
113	Wilhelm, S.I. et al. 2011. Colonial Waterbird Database. Canadian Wildlife Service, Sackville, 2698 sites, 9718 recs (8192 obs).
95	Sabine, D.L. 2005. 2001 Freshwater Mussel Surveys. New Brunswick Dept of Natural Resources & Energy, 590 recs.
90	Benjamin, L.K. 2009. NSDNR Fieldwork & Consultants Reports. Nova Scotia Dept Natural Resources, 143 recs.
89	Erskine, A.J. 1999. Maritime Nest Records Scheme (MNRS) 1937-1999. Canadian Wildlife Service, Sackville, 313 recs.
85	Newell, R.E. 2000. E.C. Smith Herbarium Database. Acadia University, Wolfville NS, 7139 recs.
81	Klymko, J.J.D. 2014. Maritimes Butterfly Atlas, 2012 submissions. Atlantic Canada Conservation Data Centre, 8552 records.
79	Blaney, C.S.; Mazerolle, D.M.; Belliveau, A.B. 2015. Atlantic Canada Conservation Data Centre Fieldwork 2015. Atlantic Canada Conservation Data Centre, # recs.
77	Robinson, S.L. 2015. 2014 field data.
77	Sollows, M.C. 2008. NBM Science Collections databases: herpetiles. New Brunswick Museum, Saint John NB, download Jan. 2008, 8636 recs.
75	Scott, Fred W. 1998. Updated Status Report on the Cougar (Puma Concolor cougar) [ Eastern population]. Committee on the Status of Endangered Wildlife in Canada, 298 recs.
69	Speers, L. 2008. Butterflies of Canada database: New Brunswick 1897-1999. Agriculture & Agri-Food Canada, Biological Resources Program, Ottawa, 2048 recs.
66	Blaney, C.S.; Mazerolle, D.M.; Belliveau, A.B. 2014. Atlantic Canada Conservation Data Centre Fieldwork 2014. Atlantic Canada Conservation Data Centre, # recs.
66	Newell, R.E. 2005. E.C. Smith Digital Herbarium. E.C. Smith Herbarium, Irving Biodiversity Collection, Acadia University, Web site: <a href="http://luxor.acadiau.ca/library/Herbarium/project/">http://luxor.acadiau.ca/library/Herbarium/project/</a> . 582 recs.
65	Cowie, Faye. 2007. Surveyed Lakes in New Brunswick. Canadian Rivers Institute, 781 recs.
63	Blaney, C.S.; Mazerolle, D.M.; Belliveau, A.B. 2013. Atlantic Canada Conservation Data Centre Fieldwork 2013. Atlantic Canada Conservation Data Centre, 9000+ recs.
55	Klymko, J.J.D. 2016. 2015 field data. Atlantic Canada Conservation Data Centre.
49	McAlpine, D.F. 1998. NBM Science Collections: Wood Turtle records. New Brunswick Museum, Saint John NB, 329 recs.
46	Clayden, S.R. 2012. NBM Science Collections databases: vascular plants. New Brunswick Museum, Saint John NB, 57 recs.
41	McAlpine, D.F. 1998. NBM Science Collections databases to 1998. New Brunswick Museum, Saint John NB, 241 recs.
38	Benjamin, L.K. (compiler). 2007. Significant Habitat & Species Database. Nova Scotia Dept Natural Resources, 8439 recs.

# recs	CITATION
38	Blaney, C.S.; Mazerolle, D.M. 2010. Fieldwork 2010. Atlantic Canada Conservation Data Centre. Sackville NB, 15508 recs.
38	Kennedy, Joseph. 2010. New Brunswick Peregrine records, 2009. New Brunswick Dept Natural Resources, 19 recs (14 active).
36	Cowie, F. 2007. Electrofishing Population Estimates 1979-98. Canadian Rivers Institute, 2698 recs.
36	Spicer, C.D. 2002. Fieldwork 2002. Atlantic Canada Conservation Data Centre. Sackville NB, 211 recs.
36	Wissink, R. 2006. Fundy National Park Digital Database. Parks Canada, 41 recs.
35	Benjamin, L.K. (compiler). 2012. Significant Habitat & Species Database. Nova Scotia Dept Natural Resources, 4965 recs.
34	Mills, E. Connell Herbarium Specimens, 1957-2009. University New Brunswick, Fredericton. 2012.
30	Epworth, W. 2012. Species at Risk records, 2009-11. Fort Folly Habitat Recovery Program, 162 recs.
30	Munro, Marian K. Nova Scotia Provincial Museum of Natural History Herbarium Database. Nova Scotia Provincial Museum of Natural History, Halifax, Nova Scotia. 2013.
29	Hinds, H.R. 1999. Connell Herbarium Database. University New Brunswick, Fredericton, 131 recs.
28	Klymko, J.J.D. 2012. Maritimes Butterfly Atlas, 2010 and 2011 records. Atlantic Canada Conservation Data Centre, 6318 recs.
27	Pike, E., Tingley, S. & Christie, D.S. 2000. Nature NB Listserve. University of New Brunswick, listserv.unb.ca/archives/naturenb. 68 recs.
27	Pronych, G. & Wilson, A. 1993. Atlas of Rare Vascular Plants in Nova Scotia. Nova Scotia Museum, Halifax NS, I:1-168, II:169-331. 1446 recs.
27	Tingley, S. (compiler). 2001. Butterflies of New Brunswick. , Web site: www.geocities.com/Yosemite/8425/buttrfly. 142 recs.
26	Klymko, J.J.D.; Robinson, S.L. 2014. 2013 field data. Atlantic Canada Conservation Data Centre.
26	Layberry, R.A. & Hall, P.W., LaFontaine, J.D. 1998. The Butterflies of Canada. University of Toronto Press. 280 pp+plates.
25	Doucet, D.A. 2008. Fieldwork 2008: Odonata. ACCDC Staff, 625 recs.
24	Benedict, B. Connell Herbarium Specimens, Digital photos. University New Brunswick, Fredericton. 2005.
22	Blaney, C.S.; Spicer, C.D. 2001. Fieldwork 2001. Atlantic Canada Conservation Data Centre. Sackville NB, 981 recs.
22	Speers, L. 2001. Butterflies of Canada database. Agriculture & Agri-Food Canada, Biological Resources Program, Ottawa, 190 recs.
20	Scott, F.W. 2002. Nova Scotia Herpetofauna Atlas Database. Acadia University, Wolfville NS, 8856 recs.
19	Clayden, S.R. 2005. Confidential supplement to Status Report on Ghost Antler Lichen (Pseudevernia cladonia). Committee on the Status of Endangered Wildlife in Canada, 27 recs.
17	Roland, A.E. & Smith, E.C. 1969. The Flora of Nova Scotia, 1st Ed. Nova Scotia Museum, Halifax, 743pp.
16	Caissie, A. Herbarium Records. Fundy National Park, Alma NB. 1961-1993.
16	Doucet, D.A. & Edsall, J.; Brunelle, P.-M. 2007. Miramichi Watershed Rare Odonata Survey. New Brunswick ETF & WTF Report, 1211 recs.
16	Edsall, J. 2001. Lepidopteran records in New Brunswick, 1997-99. , Pers. comm. to K.A. Bredin. 91 recs.
16	Goltz, J.P. & Bishop, G. 2005. Confidential supplement to Status Report on Prototype Quillwort (Isoetes prototypus). Committee on the Status of Endangered Wildlife in Canada, 111 recs.
16	Klymko, J.J.D. 2016. 2014 field data. Atlantic Canada Conservation Data Centre.
15	Blaney, C.S.; Mazerolle, D.M.; Oberndorfer, E. 2007. Fieldwork 2007. Atlantic Canada Conservation Data Centre. Sackville NB, 13770 recs.
15	Blaney, C.S.; Spicer, C.D.; Mazerolle, D.M. 2005. Fieldwork 2005. Atlantic Canada Conservation Data Centre. Sackville NB, 2333 recs.
14	Benedict, B. Connell Herbarium Specimens. University New Brunswick, Fredericton. 2000.
13	Robinson, S.L. 2014. 2013 Field Data. Atlantic Canada Conservation Data Centre.
13	Wissink, R. 2000. Rare Plants of Fundy: maps. Parks Canada, 20 recs.
12	Downes, C. 1998-2000. Breeding Bird Survey Data. Canadian Wildlife Service, Ottawa, 111 recs.
12	Spicer, C.D. 2001. Powerline Corridor Botanical Surveys, Charlotte & Saint John Counties. A M E C International, 1269 recs.
11	Kennedy, Joseph. 2010. New Brunswick Peregrine records, 2010. New Brunswick Dept Natural Resources, 16 recs (11 active).
11	Webster, R.P. 2004. Lepidopteran Records for National Wildlife Areas in New Brunswick. Webster, 1101 recs.
10	Noseworthy, J. 2013. Van Brunt's Jacob's-ladder observations along tributary of Dipper Harbour Ck. Nature Conservancy of Canada, 10 recs.
9	Christie, D.S. 2000. Christmas Bird Count Data, 1997-2000. Nature NB, 54 recs.
9	McAlpine, D.F. 1983. Status & Conservation of Solution Caves in New Brunswick. New Brunswick Museum, Publications in Natural Science, no. 1, 28pp.
8	Basquill, S.P. 2003. Fieldwork 2003. Atlantic Canada Conservation Data Centre, Sackville NB, 69 recs.
8	Edsall, J. 2007. Personal Butterfly Collection: specimens collected in the Canadian Maritimes, 1961-2007. J. Edsall, unpubl. report, 137 recs.
8	Hinds, H.R. 1992. Rare Vascular Plants of Fundy National Park. , 10 recs.
8	Sollows, M.C., 2009. NBM Science Collections databases: Coccinellid & Cerambycid Beetles. New Brunswick Museum, Saint John NB, download Feb. 2009, 569 recs.
8	Webster, R.P. 2006. Survey for Suitable Salt Marshes for the Maritime Ringlet, New Populations of the Cobblestone Tiger Beetle, & New Localities of Three Rare Butterfly Species. New Brunswick WTF Report, 28 recs.
8	Zinck, M. & Roland, A.E. 1998. Roland's Flora of Nova Scotia. Nova Scotia Museum, 3rd ed., rev. M. Zinck; 2 Vol., 1297 pp.
7	Bredin, K.A. 2001. WTF Project: Freshwater Mussel Fieldwork in Freshwater Species data. Atlantic Canada Conservation Data Centre, 101 recs.
7	Munro, Marian K. Nova Scotia Provincial Museum of Natural History Herbarium Database. Nova Scotia Provincial Museum of Natural History, Halifax, Nova Scotia. 2014.
7	Oldham, M.J. 2000. Oldham database records from Maritime provinces. Oldham, M.J.; ONHIC, 487 recs.
6	Litvak, M.K. 2001. Shortnose Sturgeon records in four NB rivers. UNB Saint John NB, Pers. comm. to K. Bredin, 6 recs.
5	Blaney, C.S.; Spicer, C.D.; Rothfels, C. 2004. Fieldwork 2004. Atlantic Canada Conservation Data Centre. Sackville NB, 1343 recs.
5	Boyne, A.W. 2000. Harlequin Duck Surveys. Canadian Wildlife Service, Sackville, unpublished data. 5 recs.
5	Chaput, G. 2002. Atlantic Salmon: Maritime Provinces Overview for 2001. Dept of Fisheries & Oceans, Atlantic Region, Science Stock Status Report D3-14. 39 recs.
5	Parker, M.S.R. 2011. Hampton Wind Farm 2010: significant floral/faunal observations. , 13 recs.
4	Blaney, C.S.; Mazerolle, D.M. 2011. Fieldwork 2011. Atlantic Canada Conservation Data Centre. Sackville NB.
4	Clayden, S.R. 2003. NS lichen ranks, locations. Pers. comm to C.S. Blaney. 1p, 5 recs, 5 recs.
4	Cronin, P. & Ayer, C.; Dube, B.; Hooper, W.C.; LeBlanc, E.; Madden, A.; Pettigrew, T.; Seymour, P. 1998. Fish Species Management Plans (draft). NB DNRE Internal Report. Fredericton, 164pp.
4	Doucet, D.A. 2007. Lepidopteran Records, 1988-2006. Doucet, 700 recs.

# recs	CITATION
4	Hicklin, P.W. 1999. The Maritime Shorebird Survey Newsletter. Calidris, No. 7. 6 recs.
4	Layberry, R.A. 2012. Lepidopteran records for the Maritimes, 1974-2008. Layberry Collection, 1060 recs.
4	Marshall, L. 1998. Atlantic Salmon: Southwest New Brunswick outer-Fundy SFA 23. Dept of Fisheries & Oceans, Atlantic Region, Science. Stock Status Report D3-13. 6 recs.
4	Olsen, R. Herbarium Specimens. Nova Scotia Agricultural College, Truro. 2003.
3	Adams, J. & Herman, T.B. 1998. Thesis, Unpublished map of <i>C. insculpta</i> sightings. Acadia University, Wolfville NS, 88 recs.
3	Bateman, M.C. 2000. Waterfowl Brood Surveys Database, 1990-2000 . Canadian Wildlife Service, Sackville, unpublished data. 149 recs.
3	Belliveau, A.G. 2014. Plant Records from Southern and Central Nova Scotia. Atlantic Canada Conservation Data Centre, 919 recs.
3	Bishop, G. 2012. Field data from September 2012 Anticosti Aster collection trip. , 135 rec.
3	Bishop, G., Bagnell, B.A. 2004. Site Assessment of Musquash Harbour, Nature Conservancy of Canada Property - Preliminary Botanical Survey. B&B Botanical, 12pp.
3	Blaney, C.S. 2003. Fieldwork 2003. Atlantic Canada Conservation Data Centre. Sackville NB, 1042 recs.
3	Blaney, C.S. Miscellaneous specimens received by ACCDC (botany). Various persons. 2001-08.
3	Catling, P.M. 1981. Taxonomy of autumn-flowering <i>Spiranthes</i> species of southern Nova Scotia in Can. J. Bot. , 59:1250-1273. 30 recs.
3	Clayden, S.R. 2006. <i>Pseudevernia cladonia</i> records. NB Museum. Pers. comm. to S. Blaney, Dec, 4 recs.
3	Forbes, G. 2001. Bog Lemming, Phalarope records, NB. , Pers. comm. to K.A. Bredin. 6 recs.
3	Lautenschlager, R.A. 2005. Survey for Species at Risk on the Canadian Forest Service's Acadia Research Forest near Fredericton, New Brunswick. Atlantic Canada Conservation Data Centre, 6. 3 recs.
3	Newell, R.E. 2006. Rare plant observations in Digby Neck. Pers. comm. to S. Blaney, 6 recs.
2	Amirault, D.L. & Stewart, J. 2007. Piping Plover Database 1894-2006. Canadian Wildlife Service, Sackville, 3344 recs, 1228 new.
2	Amiro, Peter G. 1998. Atlantic Salmon: Inner Bay of Fundy SFA 22 & part of SFA 23. Dept of Fisheries & Oceans, Atlantic Region, Science Stock Status Report D3-12. 4 recs.
2	Bagnell, B.A. 2003. Update to New Brunswick Rare Bryophyte Occurrences. B&B Botanical, Sussex, 5 recs.
2	Benjamin, L.K. 2012. NSDNR fieldwork & consultant reports 2008-2012. Nova Scotia Dept Natural Resources, 196 recs.
2	Brunelle, P.-M. 2009. NS Power odonata records for Mersey, Tusket & Sissiboo systems. Nova Scotia Power, 218 recs.
2	Edsall, J. 1992. Summer 1992 Report. New Brunswick Bird Info Line, 2 recs.
2	Edsall, J. 1993. Spring 1993 Report. New Brunswick Bird Info Line, 3 recs.
2	Goltz, J.P. 2001. Botany Ramblings April 29-June 30, 2001. N.B. Naturalist, 28 (2): 51-2. 8 recs.
2	Goltz, J.P. 2002. Botany Ramblings: 1 July to 30 September, 2002. N.B. Naturalist, 29 (3):84-92. 7 recs.
2	Hill, N.M. 1994. Status report on the Long's bulrush <i>Scirpus longii</i> in Canada. Committee on the Status of Endangered Wildlife in Canada, 7 recs.
2	Hinds, H.R. 1999. A Vascular Plant Survey of the Musquash Estuary in New Brunswick. , 12pp.
2	Marx, M. & Kenney, R.D. 2001. North Atlantic Right Whale Database. University of Rhode Island, 4 recs.
2	Proulx, V.D. 2002. <i>Selaginella rupestris</i> sight record at Centreville, Nova Scotia. Virginia D. Proulx collection, 2 recs.
2	Walker, E.M. 1942. Additions to the List of Odonates of the Maritime Provinces. Proc. Nova Scotian Inst. Sci., 20. 4: 159-176. 2 recs.
1	Amirault, D.L. 1997-2000. Unpublished files. Canadian Wildlife Service, Sackville, 470 recs.
1	Belliveau, A. 2013. Rare species records from Nova Scotia. Mersey Tobeatic Research Institute, 296 records. 296 recs.
1	Benedict, B. <i>Agalinis neoscotica</i> specimen from Grand Manan. 2009.
1	Benjamin, L.K. 2009. Boreal Felt Lichen, Mountain Avens, Orchid and other recent records. Nova Scotia Dept Natural Resources, 105 recs.
1	Bredin, K.A. 2000. NB & NS Bog Project, fieldwork. Atlantic Canada Conservation Data Centre, Sackville, 1 rec.
1	Brunelle, P.-M. 2005. Wood Turtle observations. Pers. comm. to S.H. Gerriets, 21 Sep. 3 recs, 3 recs.
1	Brunton, D. F. & McIntosh, K. L. <i>Agalinis neoscotica</i> herbarium record from D. F. Brunton Herbarium. D.F. Brunton Herbarium, Ottawa. 2005.
1	Cameron, R.P. 2009. Cyanolichen database. Nova Scotia Environment & Labour, 1724 recs.
1	Cameron, R.P. 2009. <i>Erioderma pedicellatum</i> database, 1979-2008. Dept Environment & Labour, 103 recs.
1	Clayden, S.R. 2007. NBM Science Collections. Pers. comm. to D. Mazerolle, 1 rec.
1	Crowell, M.J. Plant specimens from Nictaux, NS sent to Sean Blaney for identification. Jacques Whitford Limited. 2005.
1	Dadswell, M.J. 1979. Status Report on Shortnose Sturgeon ( <i>Acipenser brevirostrum</i> ) in Canada. Committee on the Status of Endangered Wildlife in Canada, 15 pp.
1	Daury, R.W. & Bateman, M.C. 1996. The Barrow's Goldeneye ( <i>Bucephala islandica</i> ) in the Atlantic Provinces and Maine. Canadian Wildlife Service, Sackville, 47pp.
1	Dept of Fisheries & Oceans. 1999. Status of Wild Striped Bass, & Interaction between Wild & Cultured Striped Bass in the Maritime Provinces. , Science Stock Status Report D3-22. 13 recs.
1	Edsall, J. 1993. Summer 1993 Report. New Brunswick Bird Info Line, 2 recs.
1	Elderkin M.F. 2007. <i>Selaginella rupestris</i> , <i>Iris prismatica</i> & <i>Lophiola aurea</i> records in NS. NS Dept of Natural Resources, Wildlife Div. Pers. comm. to C.S. Blaney, 3 recs.
1	Hicklin, P.W. 1990. Shorebird Concentration Sites (unpubl. data). Canadian Wildlife Service, Sackville, 296 sites, 30 spp.
1	Hill, N. 2014. 2014 Monarch email report, Bridgetown, NS. Fern Hill Institute for Plant Conservation.
1	Hinds, H.R. 2000. Rare plants of Fundy in Rare Plants of Fundy: maps. Wissink, R. (ed.) Parks Canada, 2 recs.
1	Holder, M. & Kingsley, A.L. 2000. Peatland Insects in NB & NS: Results of surveys in 10 bogs during summer 2000. Atlantic Canada Conservation Data Centre, Sackville, 118 recs.
1	Jessop, B. 2004. <i>Acipenser oxyrinchus</i> locations. Dept of Fisheries & Oceans, Atlantic Region, Pers. comm. to K. Bredin. 1 rec.
1	Jolicoeur, G. 2008. Anticosti Aster at Chapel Bar, St John River. QC DOE? Pers. comm. to D.M. Mazerolle, 1 rec.
1	Klymko, J.J.D.; Robinson, S.L. 2012. 2012 field data. Atlantic Canada Conservation Data Centre, 447 recs.
1	LaFlamme, C. 2008. Discovery of <i>Goodyera pubescens</i> at Springdale, NB. Amec Earth and Environmental. Pers. comm. to D.M. Mazerolle, 1 rec.
1	LaPaix, R.W.; Crowell, M.J.; MacDonald, M. 2011. Stantec rare plant records, 2010-11. Stantec Consulting, 334 recs.
1	Loo, J. & MacDougall, A. 1994. GAP analysis: Summary Report. Fundy Model Forest, 2 recs.
1	Maass, W.S.G. & Yetman, D. 2002. Assessment and status report on the boreal felt lichen ( <i>Erioderma pedicellatum</i> ) in Canada. Committee on the Status of Endangered Wildlife in Canada, 1 rec.

# recs	CITATION
1	MacKinnon, D.S. 2013. Email report of Peregrine Falcon nest E of St. Martins NB. NS Department of Environment and Labour, 1 record.
1	Majka, C. 2009. Université de Moncton Insect Collection: Carabidae, Cerambycidae, Coccinellidae. Université de Moncton, 540 recs.
1	McAlpine, D.F. & Collingwood, L. 1989. Rare Salamander Survey in Fundy National Park. Fundy National Park, Internal Documents, 1 rec.
1	McAlpine, D.F. & Cox, S.L., McCabe, D.A., Schnare, J.-L. 2004. Occurrence of the Long-tailed Shrew ( <i>Sorex dispar</i> ) in the Nerepis Hills NB. <i>Northeastern Naturalist</i> , vol 11 (4) 383-386. 1 rec.
1	McAlpine, D.F. 1983. Species Record Cards. Fundy National Park, Library, 1 rec.
1	Neily, T.H. & Pepper, C.; Toms, B. 2013. Nova Scotia lichen location database. Mersey Tobeatic Research Institute, 1301 records.
1	Poirier, Nelson. 2012. <i>Geranium robertianum</i> record for NB. Pers. comm. to S. Blaney, Sep. 6, 1 rec.
1	Porter, C.J.M. 2014. Field work data 2007-2014. Nova Scotia Nature Trust, 96 recs.
1	Powell, B.C. 1967. Female sexual cycles of <i>Chrysemy spicta</i> & <i>Clemmys insculpta</i> in Nova Scotia. <i>Can. Field-Nat.</i> , 81:134-139. 26 recs.
1	Sabine, D.L. & Goltz, J.P. 2006. Discovery of <i>Utricularia resupinata</i> at Little Otter Lake, CFB Gagetown. Pers. comm. to D.M. Mazerolle, 1 rec.
1	Sabine, D.L. 2004. Specimen data: Whittaker Lake & Marysville NB. Pers. comm. to C.S. Blaney, 2pp, 4 recs.
1	Sabine, D.L. 2012. Bronze Copper records, 2003-06. New Brunswick Dept of Natural Resources, 5 recs.
1	Sabine, D.L. 2013. Dwaine Sabine butterfly records, 2009 and earlier.
1	Smith, M. 2013. Email to Sean Blaney regarding <i>Schizaea pusilla</i> at Caribou Plain Bog, Fundy NP. pers. comm., 1 rec.
1	Steeves, R. 2004. <i>Goodyera pubescens</i> occurrence from Colpitts Brook, Albert Co., Pers. comm. to C.S. Blaney. 1 rec.
1	Taylor, Eric B. 1997. Status of the Sympatric Smelt (genus <i>Osmerus</i> ) Populations of Lake Utopia, New Brunswick. Committee on the Status of Endangered Wildlife in Canada, 1 rec.
1	Toner, M. 2001. Lynx Records 1973-2000. NB Dept of Natural Resources, 29 recs.
1	Toner, M. 2005. <i>Listera australis</i> population at Bull Pasture Plains. NB Dept of Natural Resources. Pers. comm. to S. Blaney, 8 recs.
1	Toner, M. 2009. Wood Turtle Sightings. NB Dept of Natural Resources. Pers. comm. to S. Gerriets, Jul 13 & Sep 2, 2 recs.
1	Toner, M. 2011. Wood Turtle sighting. NB Dept of Natural Resources. Pers. com. to S. Gerriets, Sep 2, photo, 1 rec.
1	Torenvliet, Ed. 2010. Wood Turtle roadkill. NB Dept of Transport. Pers. com. to R. Lautenschlager, Aug. 20, photos, 1 rec.
1	Webster, R.P. & Edsall, J. 2007. 2005 New Brunswick Rare Butterfly Survey. Environmental Trust Fund, unpublished Rare report, 232 recs.
1	Wissink, R. 2000. Four-toed Salamander Survey results, 2000. Fundy National Park, Internal Documents, 1 rec.