



June 9, 2023

NB Environmental Assessment Branch (NB - DELG)

Marysville Place
P.O. Box 6000
Fredericton, NB E3B 5H1
Attention: Mr. Shawn Hamilton

Subject: **Project update**
Shediac Camping Resort - Beaubassin East, New-Brunswick
Englobe reference: 2302050.000
EIA# 1438

Mr. Hamilton,

Englobe Corp. is pleased to provide the Department with the following project update for the above noted project.

Here is a summary of the changes made to the project since the submission of the Environmental Impact Assessment (EIA) in July 2016.

- **Campsites and Cottages:** Initially, the project comprised 210 fully serviced campsites and 10 cottages. The updated plan now includes 230 campsites, which are categorized into three different types: Premium, Standard, and Pull-thru.
- **Boardwalk:** It is important to note that the boardwalk, which was originally part of the project, has been removed. *See the enclosed updated site plan for your reference.*
- **Modifications by NBDTI Department:** The modifications requested by the NBDTI department were consider. These modifications have been incorporated into the project, and we have included them in the enclosed drawings.
- **Gate, Pool, and Shed Locations:** Please be aware that we have adjusted the locations of the gate, pool, and shed from their original positions. *See the enclosed updated site plan for your reference.*
- **Parking Spaces:** Initially, there were 31 parking spaces planned. However, after careful evaluation, we have reduced this number to 23. *See the enclosed updated site plan for your reference.*

We trust the enclosed is to your satisfaction. If, however, additional information should be required, please let me know.

Yours very truly,

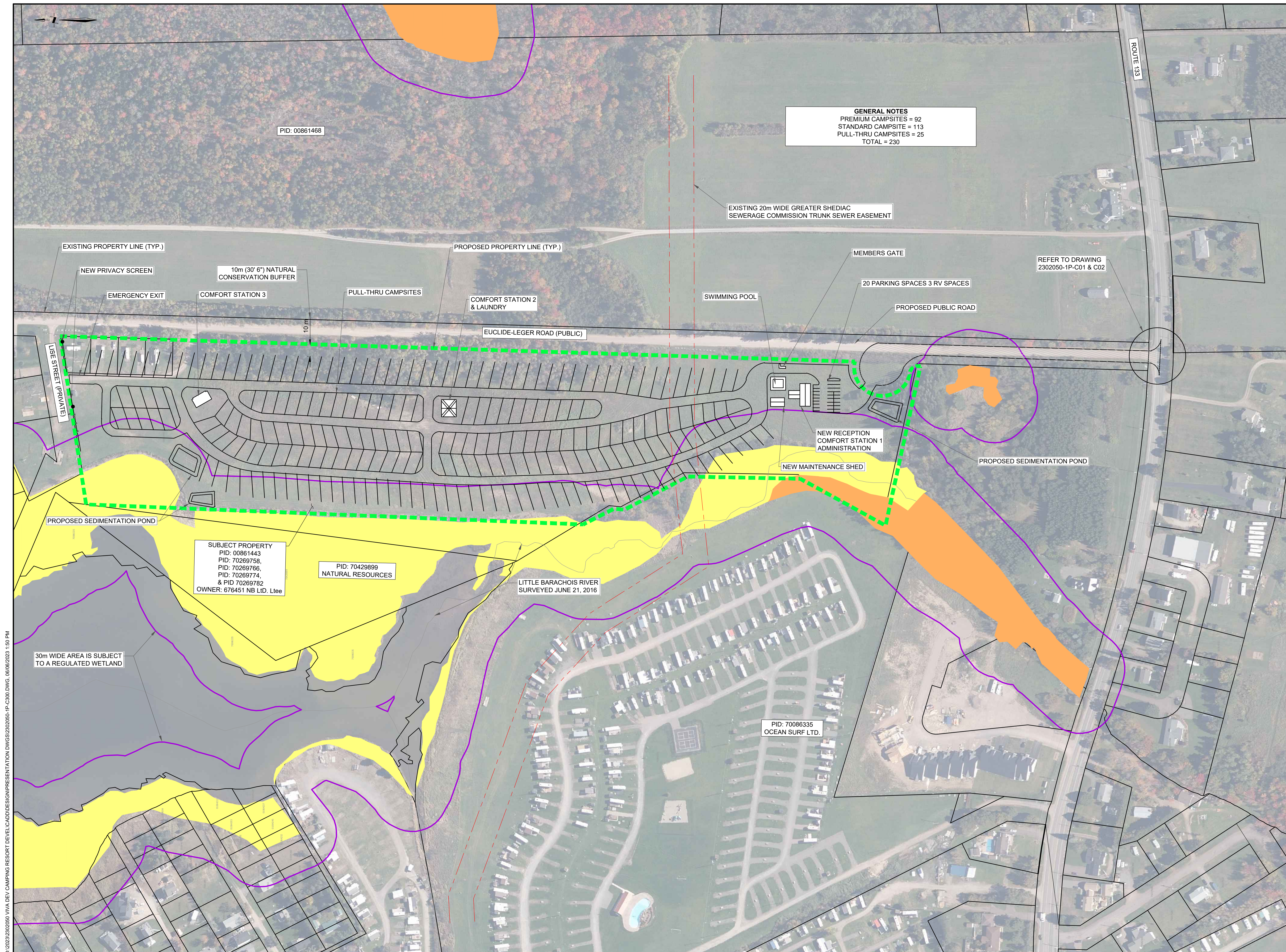
Englobe Corp.



Mathilde Diramba
Project Manager
Municipal Engineering

Encl.: Updated Site Plan

C.C.: Genevieve McIntyre, P. Eng., Team Lead, Municipal Engineering - Englobe
Garrett Donaher, P. Eng., Team Lead, Civil & Transportation Engineering - Englobe
Pierre Vautour, Owner



GENERAL NOTES
 PREMIUM CAMPSITES = 92
 STANDARD CAMPSITES = 113
 PULL-THRU CAMPSITES = 25
 TOTAL = 230

EXISTING 20m WIDE GREATER SHEDIAC SEWERAGE COMMISSION TRUNK SEWER EASEMENT

REFER TO DRAWING 2302050-1P-C01 & C02

SUBJECT PROPERTY
 PID: 00861443
 PID: 70269758,
 PID: 70269766,
 PID: 70269774,
 & PID 70269782
 OWNER: 676451 NB LTD. Ltee

PID: 70429899
 NATURAL RESOURCES

LITTLE BARACHOIS RIVER
 SURVEYED JUNE 21, 2016

PID: 70086335
 OCEAN SURF LTD.

30m WIDE AREA IS SUBJECT TO A REGULATED WETLAND

NOTES

LEGEND:

- 30m BUFFER
- PROVINCIALY SIGNIFICANT WETLAND
- PROVINCIALY REGULATED WETLAND
- PROPOSED PROPERTY LINE

A.1	JUN 6/23	ISSUED FOR CONCEPT	TA	MD
A.0	MAR 16/23	ISSUED FOR CONCEPT	MAL	GM
NO.	DATE	REVISIONS	BY	APPR.



PRELIMINARY ONLY
DATE PLOTTED: JUN 06, 2023
 NOT TO BE USED FOR CONSTRUCTION

PROJECT TITLE
**SHEDIAC CAMPING RESORT
 BEAUBASSIN EAST, NB**

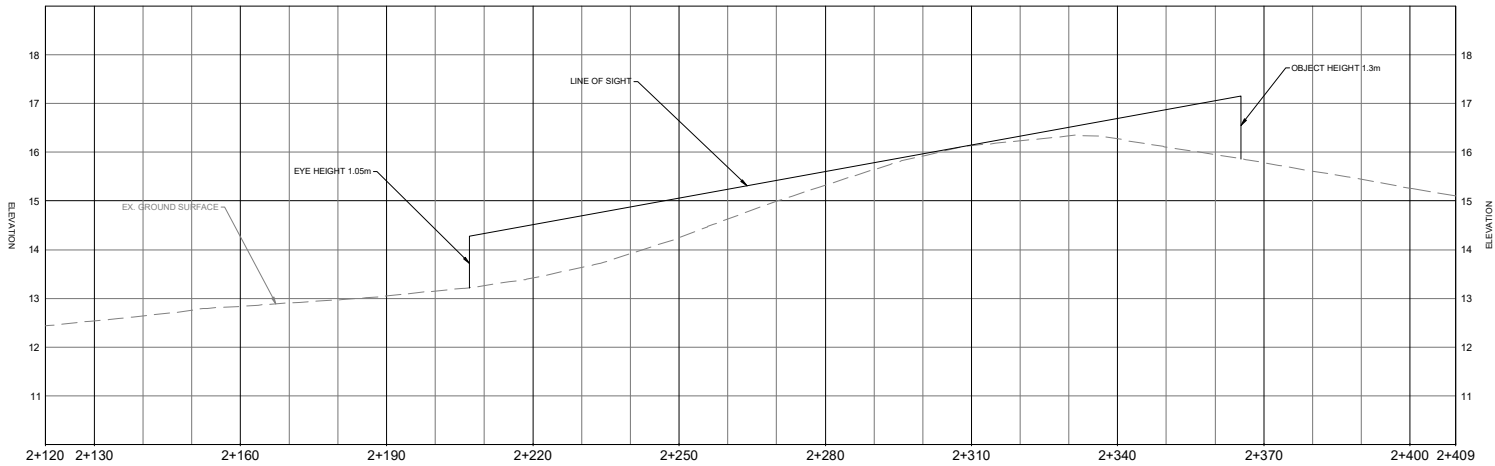
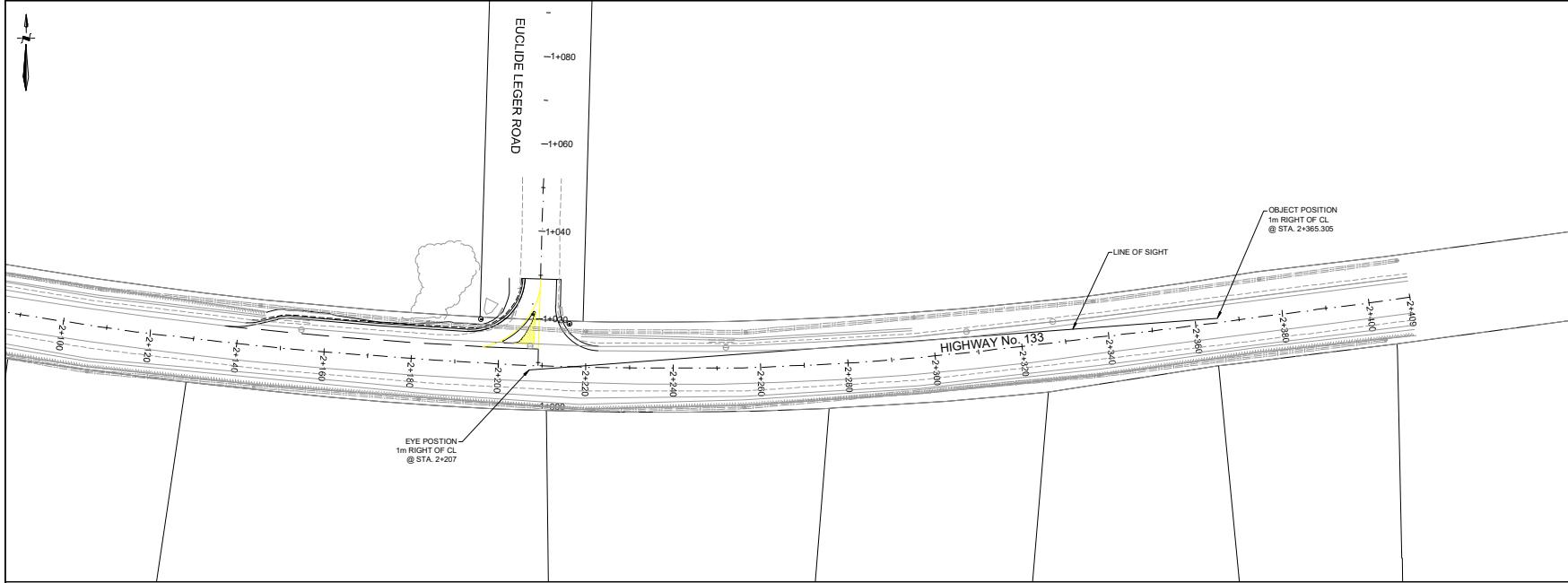
DRAWING TITLE
CONCEPTUAL SITE PLAN

Scale	Drawn By	Design By
15m 0 30m (1:1500 FULL SCALE)	TA	MAL
	Checked By	Coord Check
	MD	MAL
	Sheet	1 of 1

File Name
 2302050-1P-C300.DWG

Drawing No.
 2302050-1P-C300

©/2023/2302050 VIVA DEV CAMPING RESORT DEVELOPMENT PRESENTATION DWGS/2302050-1P-C300.DWG, 06/06/2023 1:50 PM



NOTES

A.O.	MAY 8/23	ISSUED FOR 60% REVIEW	BY	IGD
NO.	DATE	REVISIONS	BY	APP.

VIVA DEVELOPMENT INC.



PRELIMINARY ONLY
DO NOT SCALE FOR CONSTRUCTION

PROJECT TITLE
**VIVA DEVELOPMENT INC.
CAMPING RESORT DEVELOPMENT
BEAUBASSIN - EST**

SHEET/DWG
N.B.

DRAWING TITLE
**CASE "F" SITE DISTANCE
PLAN AND PROFILE**

Scale:	Drawn By:	Design By:
0m 0 10m (1:500 FULL SCALE)	TWA	GD
	CHECKED BY:	CHECK STATUS:
	GD	---
	Sheet	02 of 02

File Name: 2302050-1P-C02.DWG

Drawing No.: 2302050-1P-C02

C:\2302050\1P-1P-CAMPING RESORT DEVELOPMENT\BEAUBASSIN\PRESENTATION\2302050-1P-C02.DWG 2023/05/08 4:05PM