



COVID-19 Report

**REPORTING PERIOD:
FEBRUARY 26 TO MARCH 4, 2023 (WEEK 9)**

March 7, 2023
Department of Health





SUMMARY^{1,2}

Testing this reporting period:	n = 360 New PCR confirmed cases n = 1818 Tests completed
---------------------------------------	---

Outcomes this reporting period:	n = 11 Admissions to hospital n = 0 Admissions to ICU n = 8 Confirmed deaths ³
--	---

HIGHLIGHTS

- The number of confirmed cases and percent positivity remained relatively stable for this reporting period.
- COVID-19 hospitalizations and deaths remained stable.
- Since August 28, 2022, the rate of hospitalizations is highest among those aged 70 years and older.

¹ Numbers are subject to change due to reporting delays. Missed events will be captured in subsequent reports as data become available. Due to changes in COVID-19 testing strategies in January 2022, case counts are underestimated.

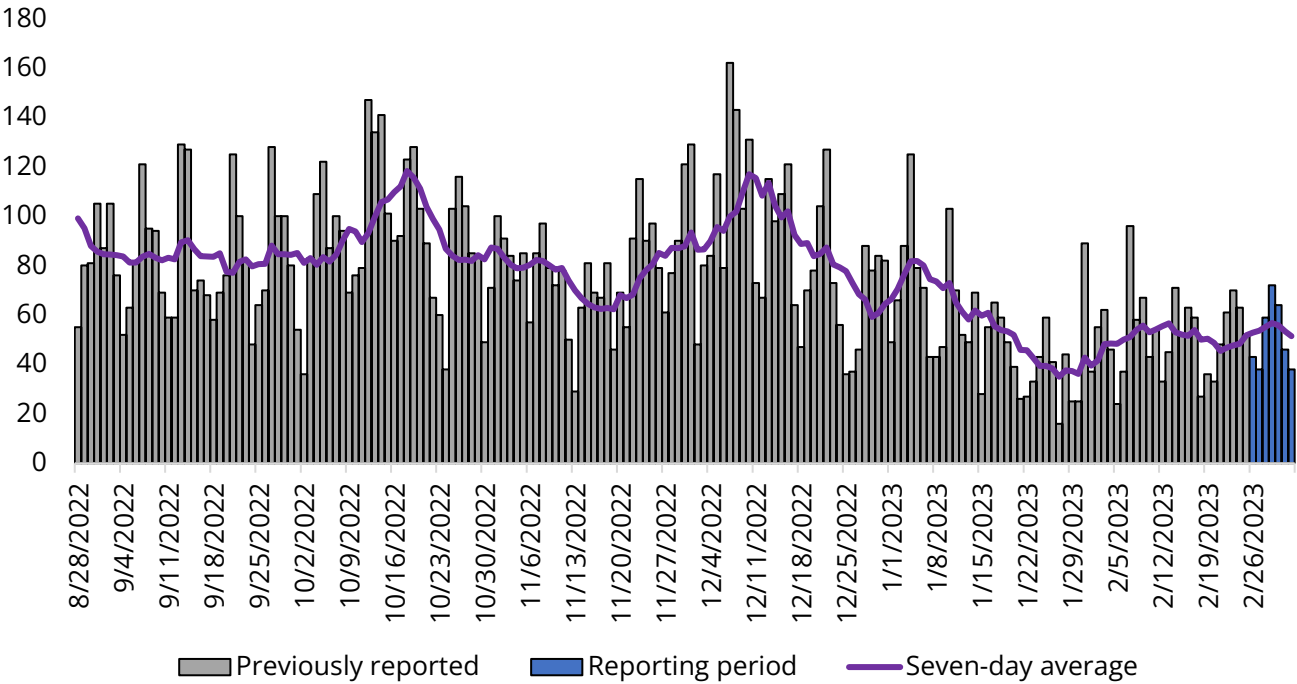
² Refer to *Definitions* section for case definitions.

³ Number of confirmed deaths that occurred since August 28th, 2022, reported to Public Health New Brunswick (PHNB) since previous report.



COVID-19 LABORATORY DATA

Figure 1: Number and seven-day moving average of PCR confirmed COVID-19 cases by report date, August 28, 2022, to March 4, 2023 (Data source: New Brunswick Regional Hospitals)

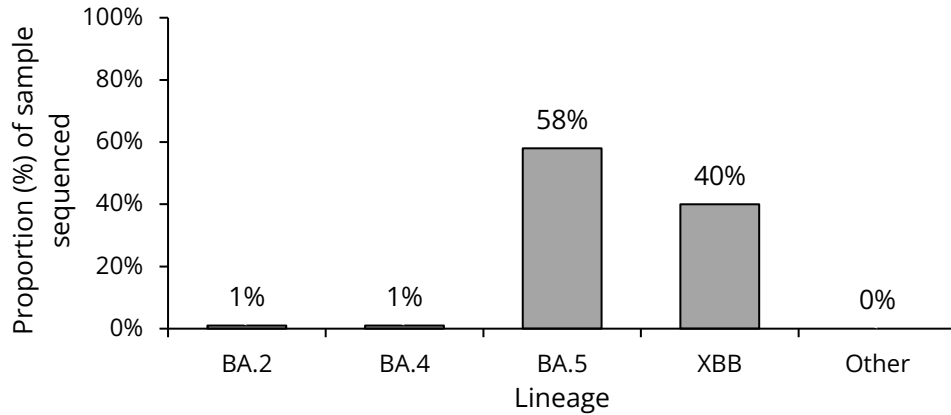


Notes:

- PCR testing restricted to eligible population: [COVID-19 testing \(gnb.ca\)](https://www.gnb.ca).



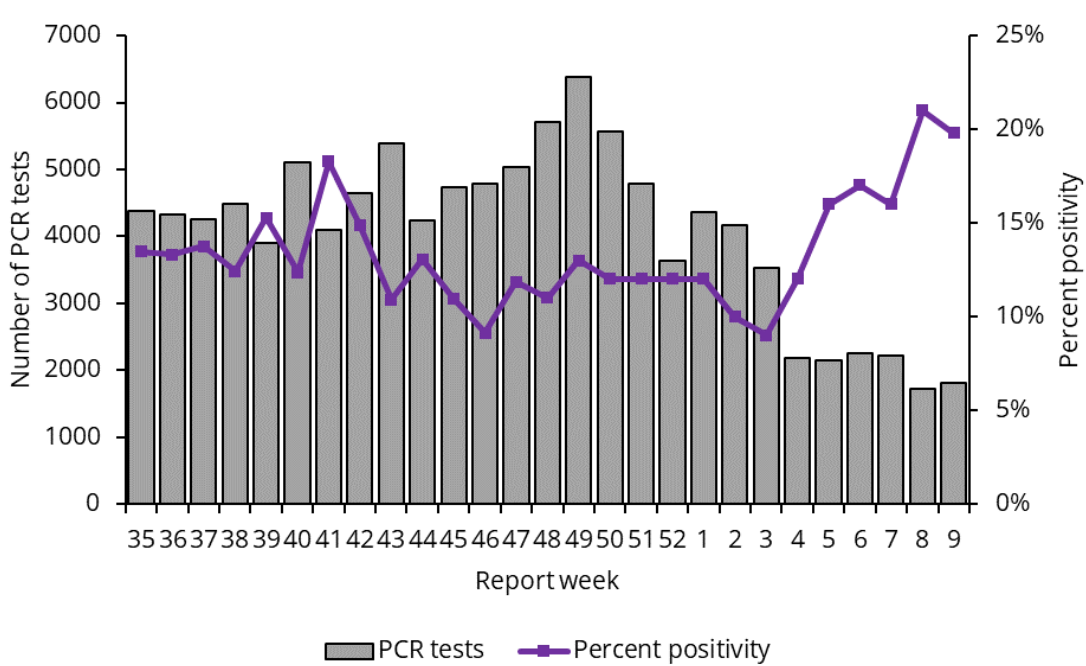
Figure 2: Distribution of most recent sample sequenced for COVID-19, February 15 to February 26, 2023 (Data source: George Dumont Laboratory)



Notes:

- Sample includes 174 specimens.
- Categories include respective sublineages.

Figure 3: Number of COVID-19 PCR tests and percent positivity by report week, August 28, 2022, to March 4, 2023 (Data source: New Brunswick Regional Hospitals)

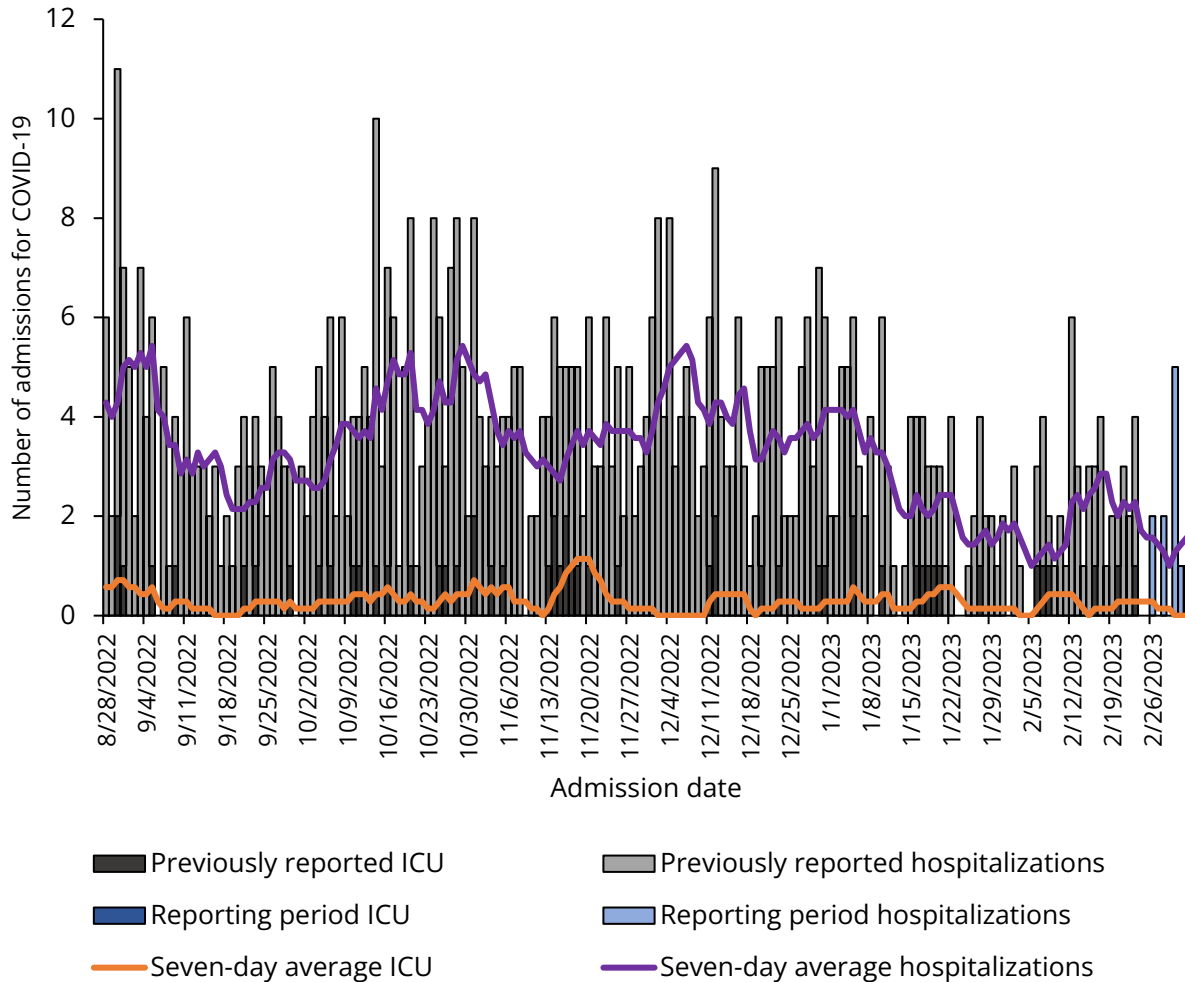


Notes:

- PCR testing restricted to eligible population: [COVID-19 testing \(gnb.ca\)](https://www.gnb.ca).

COVID-19 HOSPITALIZATIONS AND DEATH SURVEILLANCE

Figure 4: Hospitalizations and ICU admissions for COVID-19 by admission date, August 28, 2022, to March 4, 2023 (Data source: Horizon Health Network and Réseau de Santé Vitalité)



Notes:

- Admission date is the latest occurring date between admission date and report date.
- Hospitalizations and ICU admissions include those who were admitted for COVID-19 only.
- ICU status is noted from the Regional Health Authorities.



Figure 5: Number and seven-day moving average of COVID-19 deaths by date of death, August 28, 2022, to March 4, 2023 (Data source: SNB Vital Statistics)

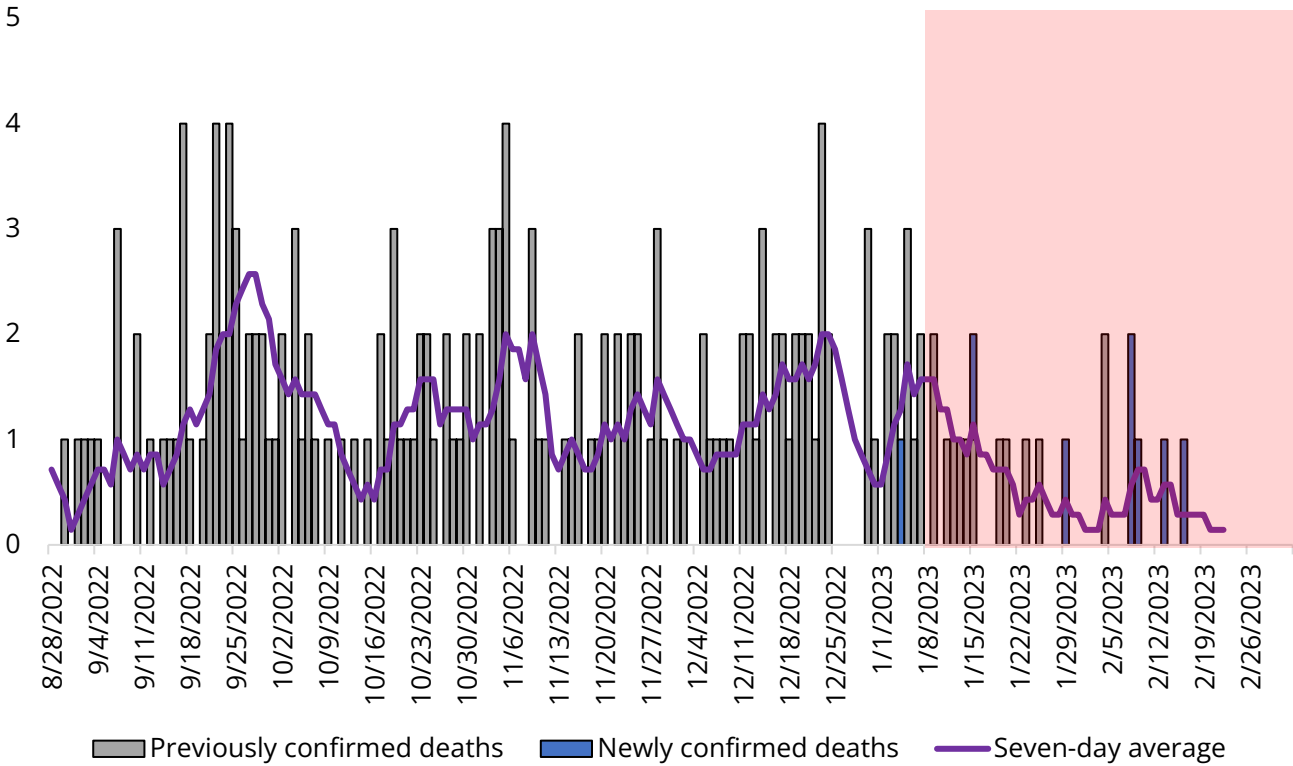


Figure 5 represents deaths that occurred since August 28th, 2022. No additional deaths being reported this period occurred prior to August 28th, 2022, bringing the number of total deaths since the start of the pandemic to 842.

Notes:

- Deaths are subject to a lag in reporting.
 - Average two-month lag from date of death to the registration of death.
- The shaded area should be interpreted with caution.

Table 1: Number of COVID-19 PCR tests, confirmed cases, hospitalizations, admissions to ICU, and deaths (Data Source: New Brunswick Regional Hospitals, Horizon Health Network, Réseau de Santé Vitalité, and SNB Vital Statistics)

	Number in reporting week	Change from previous reporting week	Total since August 28, 2022
PCR tests	1818	89	109804
Confirmed cases	360	-3	14074
Hospitalizations	11	0	606
ICU	0	-2	53
Confirmed deaths	8	-1	184

Notes:

- Deaths are subject to a lag in reporting.
 - Average two-month lag from date of death to registration of death.
- Hospitalizations and ICU admissions include those who were admitted for COVID-19 only.
- ICU status is noted from the Regional Health Authorities.
- PCR testing restricted to eligible population: [COVID-19 testing \(gnb.ca\)](https://www.gnb.ca).

Table 2: COVID-19 hospitalization and death rates by age group, August 28, 2022, to March 4, 2023 (Data source: Horizon Health Network, Réseau de Santé Vitalité, and SNB Vital Statistics)

Age Group	Number	Crude rate per 100,000	Relative risk
Hospitalizations			
<20 years	35	22.9	1.1
20-59 years*	85	21.5	1.0
60-69 years	97	82.9	3.9
70+ years	389	336.0	15.6
Deaths			
<50 years*	4	0.9	1.0
50-69 years	16	6.8	7.4
70+ years	164	141.6	152.7

Notes:

- *Indicates reference category. Each risk is compared to the reference category.
- Relative risk is calculated by dividing the age group specific relative risk by the reference category relative risk.
- Deaths are subject to a lag in reporting.
 - Average two-month lag from date of death to registration of death.
- Hospitalizations and ICU admissions include those who were admitted for COVID-19 only.
- Population estimates from Statistics Canada 2021 Census of Population.

Table 3: Age-adjusted COVID-19 hospitalization and death rates by vaccine status, August 28, 2022, to March 4, 2023 (Data source: PHIS, Horizon Health Network, Réseau de Santé Vitalité, and SNB Vital Statistics)

Vaccination status	Number	Crude rate per 100,000	Age-adjusted rate per 100,000 person-years
Hospitalizations			
Unvaccinated	95	129.4	1118.5
Primary series completed	98	38.2	124.2
Primary series completed and 1 additional dose	217	102.6	109.8
Primary series completed and 2 or more additional doses	184	92.1	42.0
Deaths			
Unvaccinated	21	28.6	513.7
Primary series completed	27	10.5	43.6
Primary series completed and 1 additional dose	77	36.4	42.1
Primary series completed and 2 or more additional doses	55	27.5	11.8

Notes:

- Refer to *Definitions* section for vaccination status definitions.
- Partially vaccinated cases were excluded from the analysis due to small number of events.
- Age-adjusted rates are used to account for the differences in age distribution across groups.
- Deaths are subject to a lag in reporting.
 - Average two-month lag from date of death to registration of death.
- Hospitalizations and ICU admissions include those who were admitted for COVID-19 only.
- Population estimates from Statistics Canada 2021 Census of Population.



Table 4: Summary of COVID-19 PCR tests, confirmed cases, hospitalizations, and admissions to ICU by region for current reporting period, February 26 to March 4, 2023 (Data Source: New Brunswick Regional Hospitals, Horizon Health Network, Réseau de Santé Vitalité)

Region	PCR tests	Number of confirmed cases	Hospitalizations	ICU
1	447	75	2	0
2	420	68	0	0
3	397	101	3	0
4	135	35	2	0
5	102	13	0	0
6	196	52	2	0
7	121	16	2	0

Notes:

- Region was assigned based on laboratory data.
- Hospitalizations and ICU admissions include those who were admitted for COVID-19 only.
- PCR testing is restricted to eligible population: [COVID-19 testing \(gnb.ca\)](https://www.gnb.ca)



DEFINITIONS

Case definitions

Confirmed: A confirmed case of SARS-CoV-2 is defined as:

- The detection of at least one specific gene target by a validated laboratory based NAAT assay performed at a recognized laboratory or,
- A validated point-of-care NAAT that has been deemed acceptable to provide a final result by the Government of New Brunswick or,
- A four-fold or greater seroconversion/diagnostic rise in viral specific antibody titre in serum or plasma using a validated laboratory-based serological-based serological assay for SARS-CoV-2.

Deceased: A death is determined to be COVID-19 related if the attending physician has identified that COVID-19 was a primary or contributing factor. If the cause of death is unclear, Public Health may request additional clarification from the vulnerable setting, or a Medical Officer of Health.

Hospitalization: Cases hospitalized for COVID-19, as per the reason for admission.

ICU: Cases hospitalized for COVID-19, as per the reason for admission and identified as occupying an ICU bed.

Vaccination status definitions (Source: [COVID-19 epidemiology update: Cases following vaccination - Canada.ca](#))


Unvaccinated: Cases who were unvaccinated at the time of their infection.

Partially vaccinated: Cases whose infection occurred

- 14 days or more after their first vaccine dose in a two-dose series, or
- less than 14 days after their second dose of the vaccine.

Completed primary series: Cases whose infection occurred

- 14 days or more after second dose in a two-dose series, or
- 14 days or more after one dose of a one-dose vaccine series, or
- less than 14 days after a first additional dose.



Completed primary vaccine series and 1 additional dose:

- Cases whose infection occurred 14 days or more following one additional dose or,
- less than 14 days after their second additional dose.

Completed primary series and 2 or more additional doses: Cases whose infection occurred 14 days or more following two or more additional doses.

Technical notes

Crude rate per 100,000: In some situations, comparing the number of events (e.g. hospitalizations) between groups does not provide a fair comparison, because the size of each group is different. The crude rate per 100,000 standardizes the numbers of events to the size of the group. As such, it provides an opportunity to compare rate of events between groups.

Age-adjusted rate: In some situations, only adjusting for the size of the group is not sufficient, because the underlying characteristics of each group is different. For example, if you compare number of hip replacements in a school compared to a nursing home, the rate itself wouldn't be a fair comparison because the age distribution is very different. An age-adjusted rate accounts for the differences in age between the groups and presents the rates had the ages been similar.

Relative risk: A relative risk is a measure of how likely one group is to be represented compared to a reference group.